

FOR SALE

160 Acres+/- Liberty, NE

This 160 acre tract is out of CRP and can be farmed. It will make an excellent pasture or crop land. This farm has an excellent wildlife population with its current habitat environment. The farm was cropland with productive soil in the past.

A great opportunity with many options.



\$464,000

Contact us today!

DON KRACKE

402-432-3462

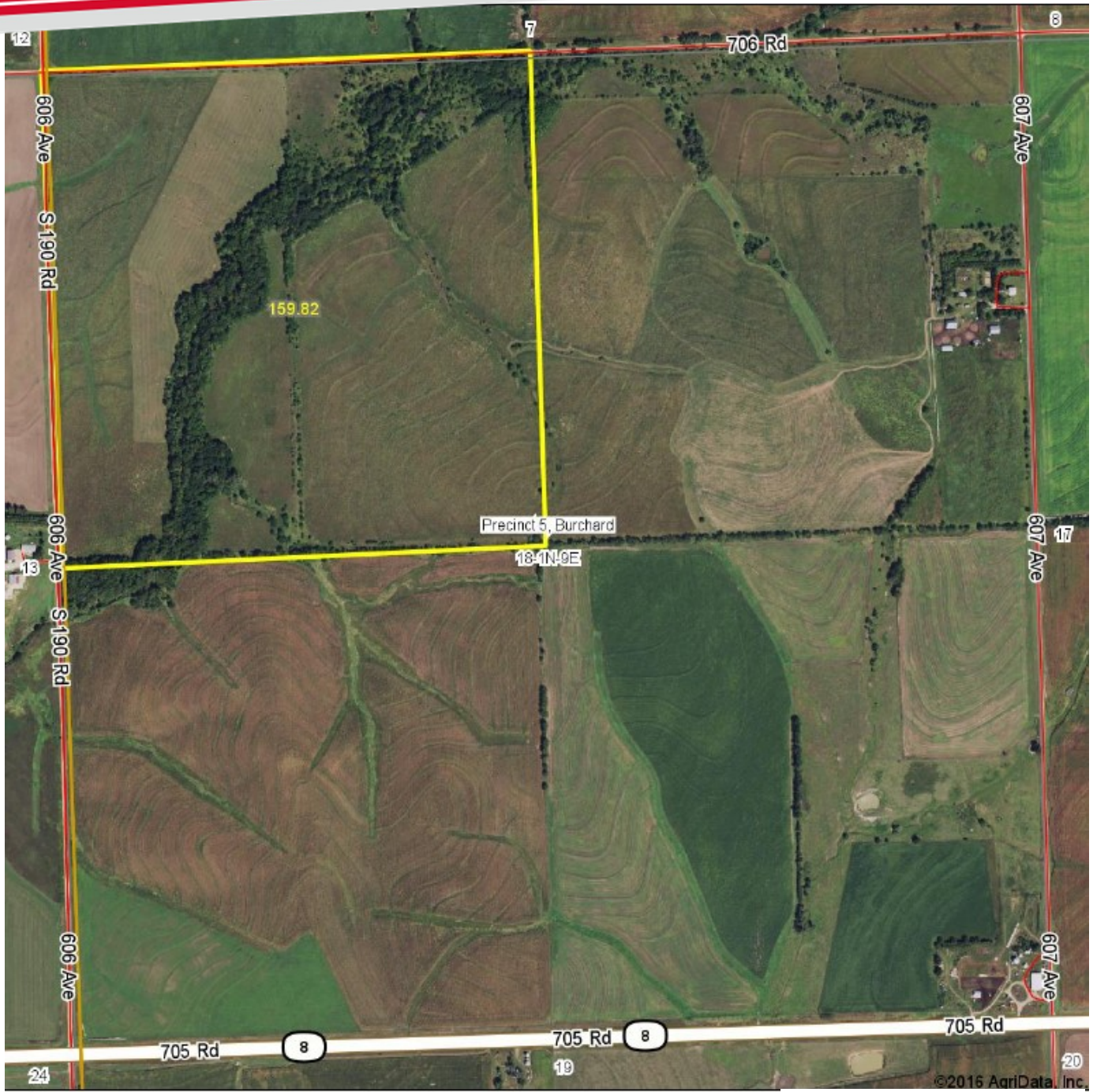
don@donaldkracke.com

7990 SW 142nd RD DeWitt, NE 68341

www.donaldkracke.com

FOR SALE

160 Acres+/- Liberty, NE



map center: 40° 3' 6.76, 96° 27' 15.77

0ft 833ft 1667ft



Maps Provided By:



18-1N-9E
Pawnee County
Nebraska



4/5/2016

Aerial Map

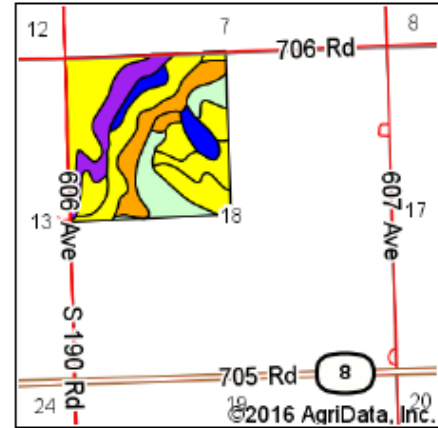
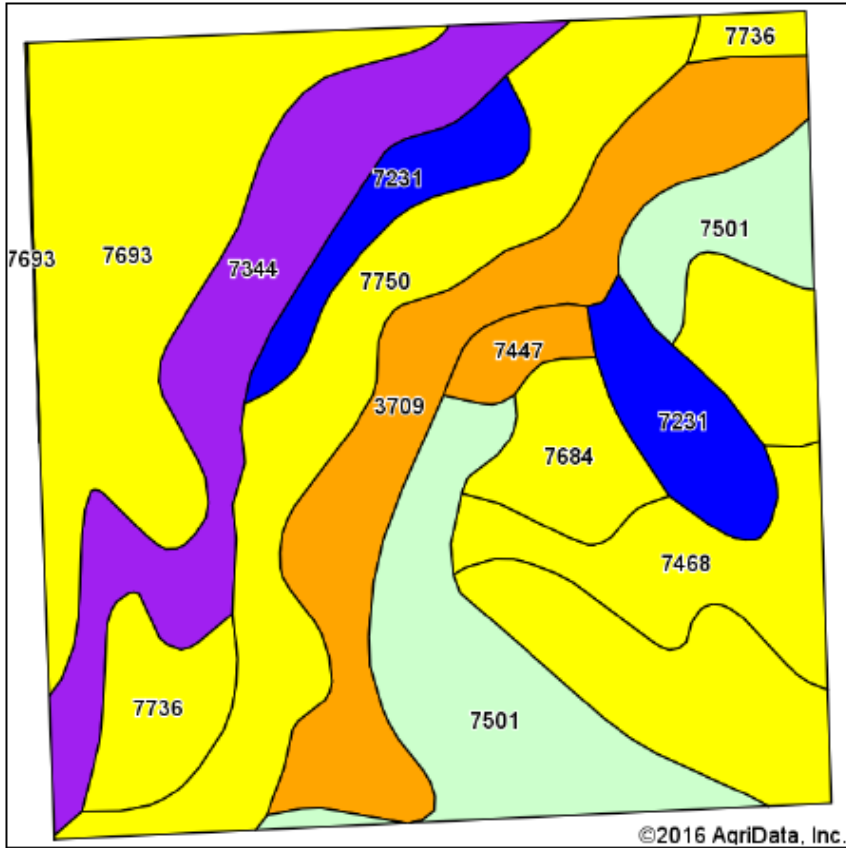
Contact us today!

402-432-3462
don@donaldkracke.com
www.donaldkracke.com

FOR SALE

160 Acres+/- Liberty, NE

Soils Map



State: **Nebraska**
 County: **Pawnee**
 Location: **18-1N-9E**
 Township: **Precinct 5, Burchard**
 Acres: **159.82**
 Date: **4/5/2016**



Soils data provided by USDA and NRCS.

©2016 AgriData, Inc.

7736	Colo and Kennebec soils, occasionally flooded	6.86	4.3%		Ilw	Ilw	67	5	4	118	68	42	2	6	104	58
7684	Wymore silty clay loam, 3 to 6 percent slopes, eroded	5.52	3.5%		Ille	Ive	61									
7447	Morrill loam, 6 to 11 percent slopes	2.29	1.4%		Ille	Ive	71	4		80		31			76	
7693	Wymore silty clay loam, 2 to 6 percent slopes	0.13	0.1%		Ille	Ille	69									
Weighted Average							58.1	2.9	1.1	58.1	24.6	24.9	0.1	0.3	58.5	21.3

Area Symbol: NE067, Soil Area Version: 18
 Area Symbol: NE133, Soil Area Version: 14

*c: Using Capabilities Class Dominant Condition Aggregation Method

Soils data provided by USDA and NRCS.



Contact us today!

402-432-3462
 don@donaldkracke.com
 www.donaldkracke.com

FOR SALE

160 Acres+/- Liberty, NE

Area Symbol: NE067, Soil Area Version: 18

Area Symbol: NE133, Soil Area Version: 14

Code	Soil Description	Acres	Percent of field	SRPG Legend	Non-Irr Class *c	Irr Class *c	SRPG	Alfalfa hay	Alfalfa hay Irrigated	Com	Com Irrigated	Winter wheat	Bromegrass alfalfa	Bromegrass alfalfa Irrigated	Grain sorghum	Grain sorghum Irrigated	Sc
7693	Wymore silty clay loam, 2 to 6 percent slopes	42.52	26.6%		IIIe	IIIe	69										
7501	Pawnee clay loam, 4 to 8 percent slopes, eroded	21.52	13.5%		IIIe			3		49		26			60		
7750	Nodaway silt loam, occasionally flooded	21.07	13.2%		IIw		61	5		89		35			89		
3709	Crete silt loam, terrace, 0 to 1 percent slopes	20.25	12.7%		IIIs	IIIs	77	5		90		39			90		
7344	Malmo, eroded-Pawnee complex, 6 to 11 percent slopes	19.02	11.9%		IVe		52	3	5	72	115	35			74	98	
7231	Judson silt loam, 2 to 6 percent slopes	11.02	6.9%		IIe	IIIe	81	5		124		44			115		
7468	Otoe soils, 3 to 6 percent slopes, eroded	9.62	6.0%		IVe	IVe	68	4	6	83	133	40			83	118	



Are you or someone you know looking for a property like this? Donald Kracke is an Accredited Land Consultant ALC working with agricultural clients throughout the United States.

We are licensed in Iowa, Kansas, Missouri, Nebraska and South Dakota.



Contact us today!

402-432-3462
don@donaldkracke.com
www.donaldkracke.com