

562 Warner Road



February 9, 2017

Disclaimer: This product is for informational purposes only and has not been prepared for or be suitable for legal, engineering, or surveying purposes. It does not represent an on-the-ground survey and represents only the approximate relative location of boundaries

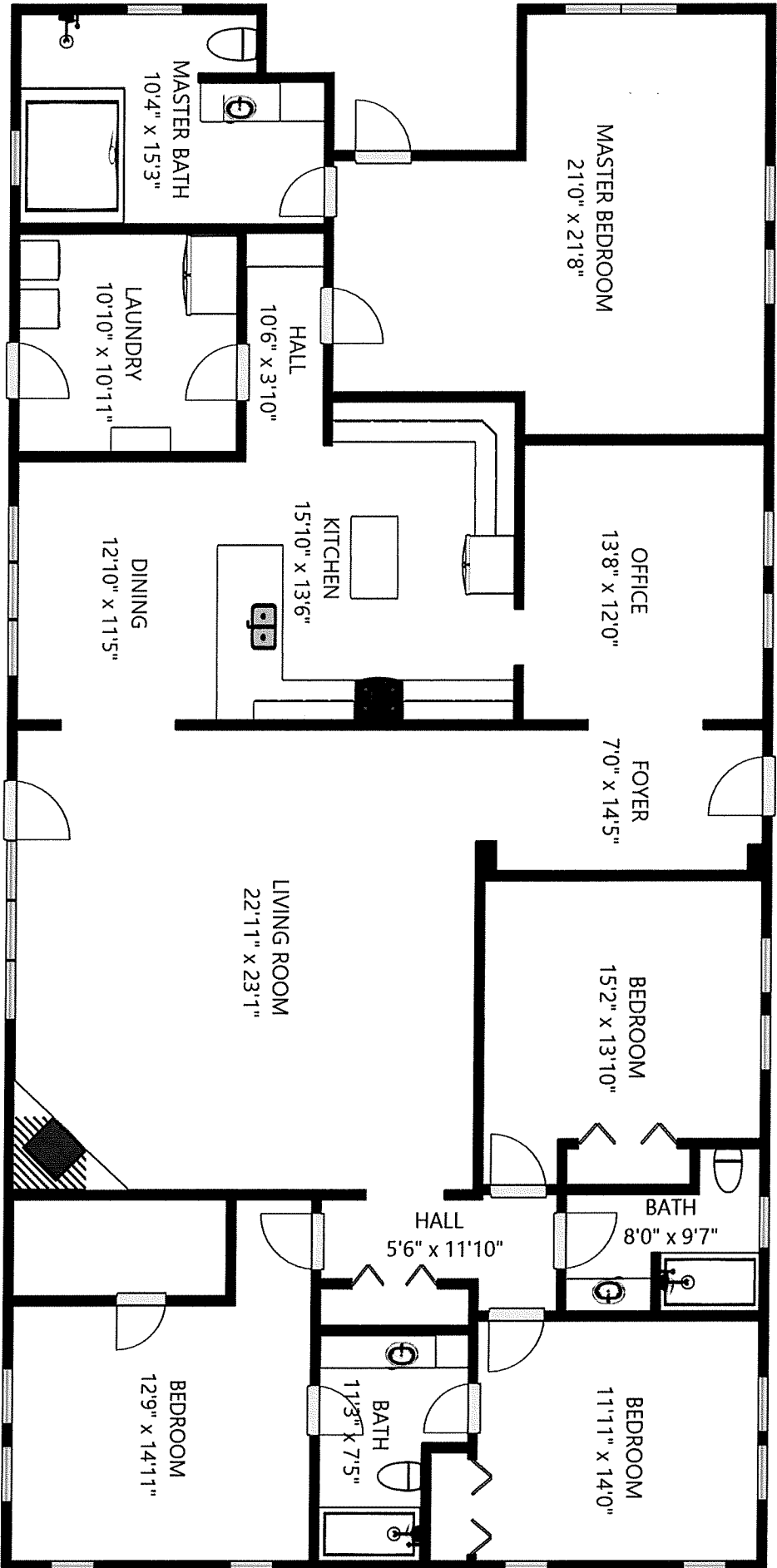
1:6,362

0 0.05 0.1 0.2 mi

0 0.075 0.15 0.3 km

Source: Esri, DigitalGlobe, GeoEye, Earthstar Geographics, CNES/Airbus DS, USDA, USGS, AeroGRID, IGN, and the GIS User Community

Austin County Appraisal District & BIS Consulting - www.biscoconsultants.com
This product and relative contents are the property of the respective governmental entity and BIS Consultants. Use is restricted for official purposes.



SIZES AND DIMENSIONS ARE APPROXIMATE, ACTUAL MAY VARY