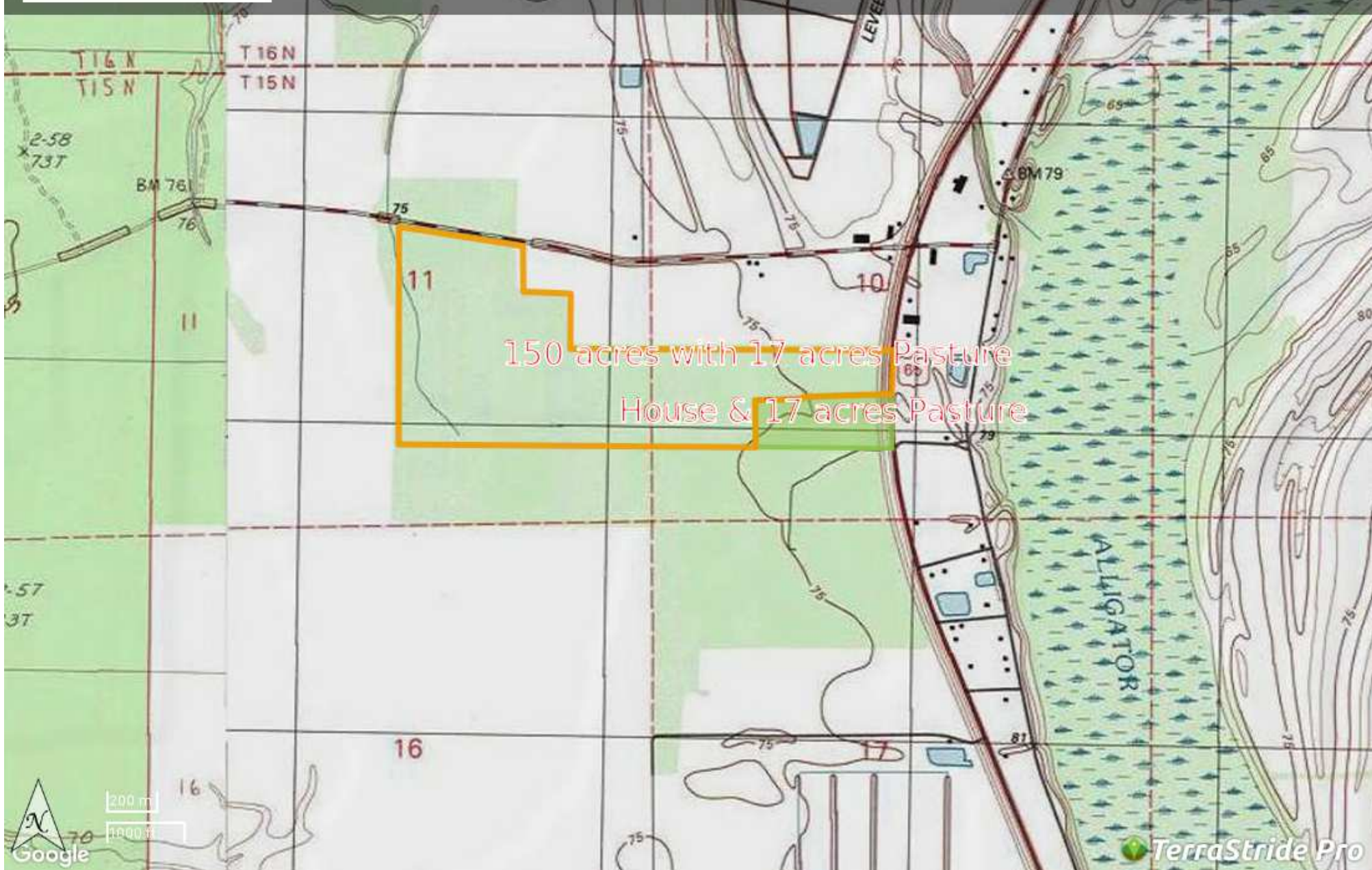




59 LA - Madison Ledet 167 acres +/-
149.71 acres
\$625,000

Brown Realty Co
Richard Lemoine
(318) 669-3414
rlemoine@brownrealtyco.com
<http://www.brownrealtyco.com/>






150 acres with 17 acres Pasture
House & 17 acres Pasture



Property Report—LA - Madison Ledet 167 acres +/-

Legend

Feature	Icon	Colors
Pasture		
Boundary		
Text Label		

Description

Excellent small hunting with tremendous deer hunting. Quality buck on this property. Close proximity to Tensas River National Wildlife Refuge and neighboring tracts of timber assure constant backup. The property will be entered into the Wetlands Reserve program before closing which should improve the habitat further. The house is a unique structure; part house and part barn. 2120 sqft with about 1900 sqft of very nice living area. 2 Bedroom 2 bath, hunters room, large garage with toy storage room. Brown Realty Co Jerry Brown, Broker 2189 Hwy 425 Rayville, LA 71269 318-728-9544

DISCLAIMER: The information contained herein is as obtained by this broker from sellers, owners, or other sources. This information is considered reliable, neither this broker nor owners make any guarantee, warranty or representation as to correctness of any data or descriptions and the accuracy of such statements. The correctness and / or accuracy of any and all statements should be determined through independent investigation made by the prospective purchaser. Any offer for sale is subject to prior sale, errors and omissions, change of price, terms or other conditions or withdrawal from sale

Generated on: Jan. 24, 2017