



LA - Franklin Sandman 10

acres +/-

20.02 acres

\$44,000

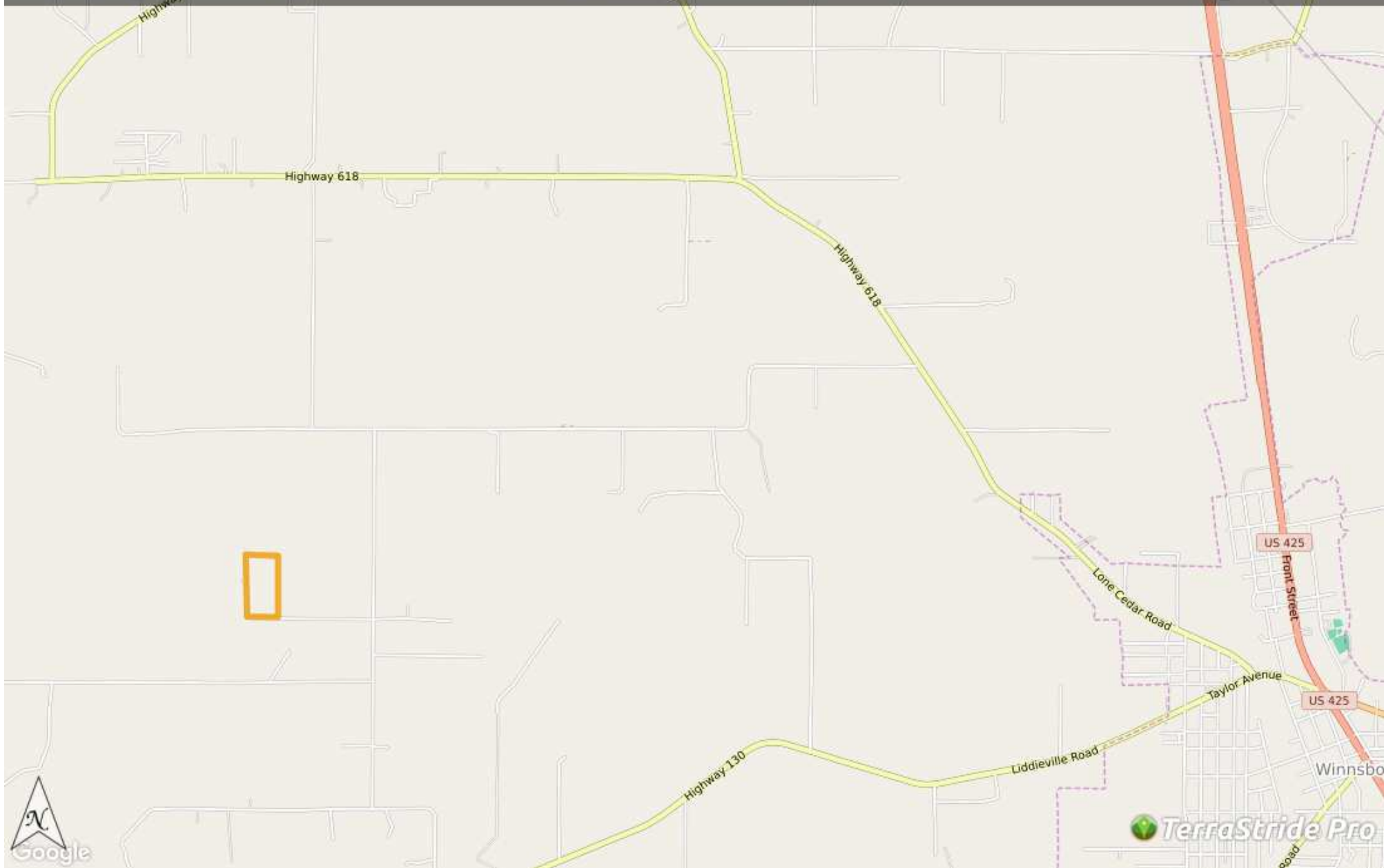
Brown Realty Co

Jim Rolfe

(318) 376-5576

jrolfe@brownrealtyco.com

<http://www.brownrealtyco.com/>



Property Report—LA - Franklin Sandman 10 acres +/-

Legend

Feature	Icon	Colors
Boundary		

Description

This is a nice home tract at the end of Rhymes Rd. It has good access & a culvert would have to be installed from Rhymes Rd into the woods. Call for details. Brown Realty Co Jerry Brown, Broker 2189 Hwy 425 Rayville, LA 71269 318-728-9544

DISCLAIMER: The information contained herein is as obtained by this broker from sellers, owners, or other sources. This information is considered reliable, neither this broker nor owners make any guarantee, warranty or representation as to correctness of any data or descriptions and the accuracy of such statements. The correctness and / or accuracy of any and all statements should be determined through independent investigation made by the prospective purchaser. Any offer for sale is subject to prior sale, errors and omissions, change of price, terms or other conditions or withdrawal from sale

Generated on: Sept. 21, 2016