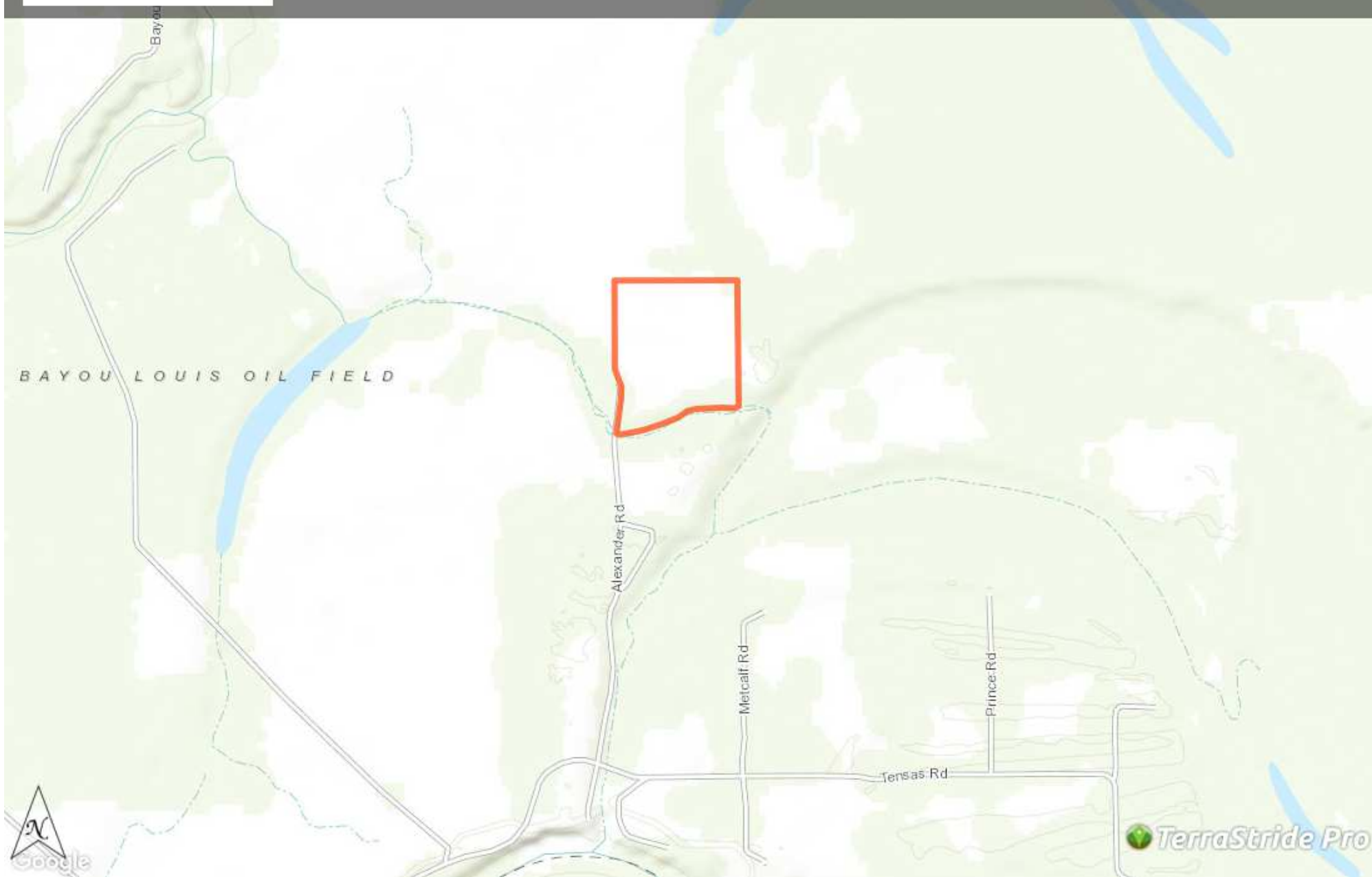




LA - Catahoula Wiggins 43
acres +/-
43.85 acres
\$197,800

Brown Realty Co
Jim Rolfe
(318) 376-5576
jrolfe@brownrealtyco.com
<http://www.brownrealtyco.com/>



Property Report—LA - Catahoula Wiggins 43 acres +/-

Legend

Feature	Icon	Colors
Boundary		

Description

Here is a nice farm that has been leveled. It also has a turbine well on the SE corner with a power unit attached that will go with the sale. The owner has a good crop of soybeans growing & will pay a rent of 20% to a new buyer. Call with any questions. Brown Realty Co Jerry Brown, Broker 2189 Hwy 425 Rayville, LA 71269 318-728-9544

DISCLAIMER: The information contained herein is as obtained by this broker from sellers, owners, or other sources. This information is considered reliable, neither this broker nor owners make any guarantee, warranty or representation as to correctness of any data or descriptions and the accuracy of such statements. The correctness and / or accuracy of any and all statements should be determined through independent investigation made by the prospective purchaser. Any offer for sale is subject to prior sale, errors and omissions, change of price, terms or other conditions or withdrawal from sale

Generated on: June 10, 2016