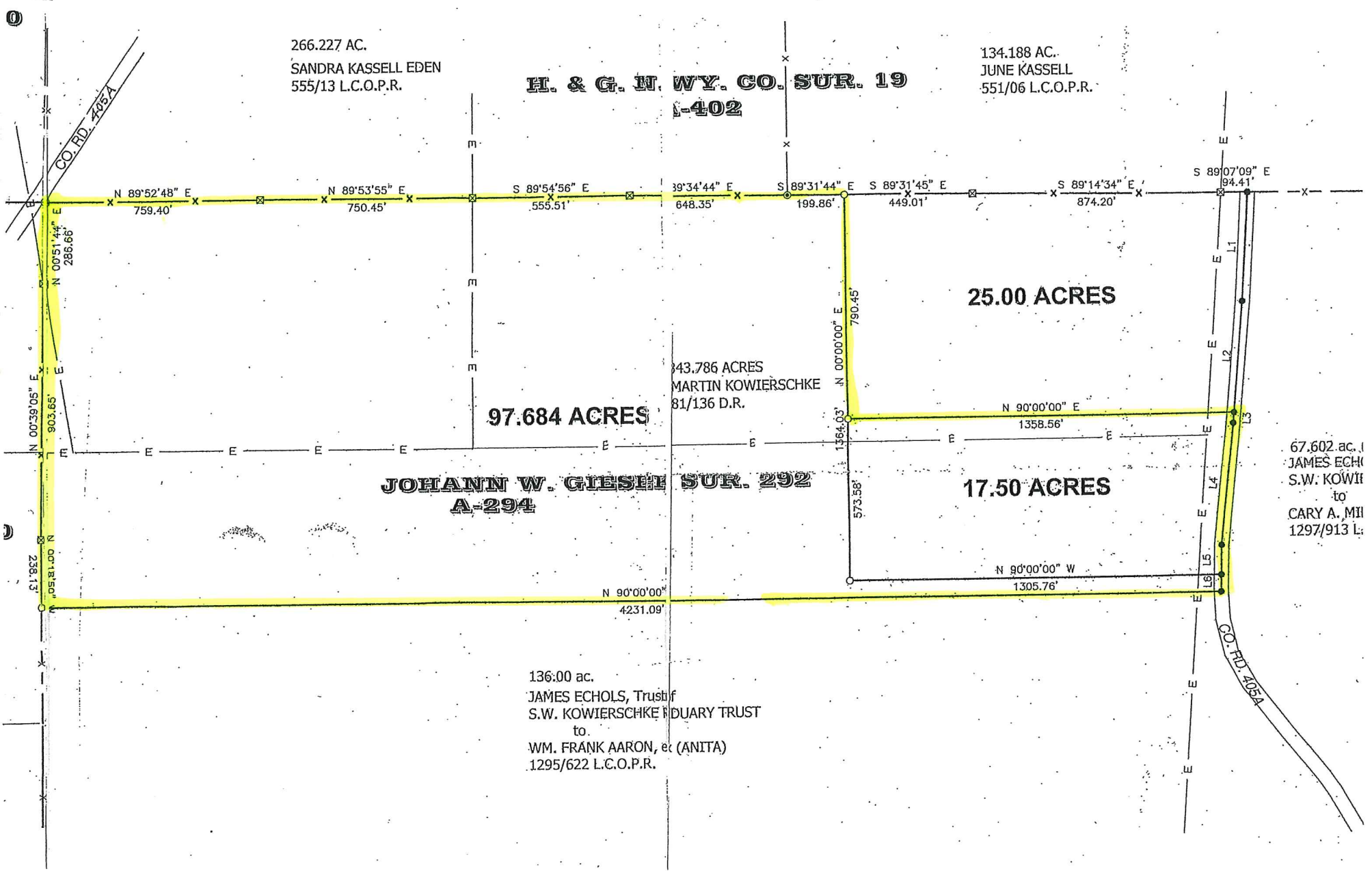


266.227 AC.
SANDRA KASSELL EDEN
555/13 L.C.O.P.R.

H. & G. W. WY. CO. SUR. 19
L-402

134.188 AC.
JUNE KASSELL
551/06 L.C.O.P.R.



97.684 ACRES

JOHANN W. GIESEL SUR. 292
A-294

43.786 ACRES
MARTIN KOWIERSCHKE
81/136 D.R.

25.00 ACRES

17.50 ACRES

67.602 ac. |
JAMES ECHOLS
S.W. KOWIERSCHKE
to
CARY A. MILLER
1297/913 L.C.O.P.R.

136.00 ac.
JAMES ECHOLS, Trustee of
S.W. KOWIERSCHKE ESTATE TRUST
to
WM. FRANK AARON, et al (ANITA)
1295/622 L.C.O.P.R.