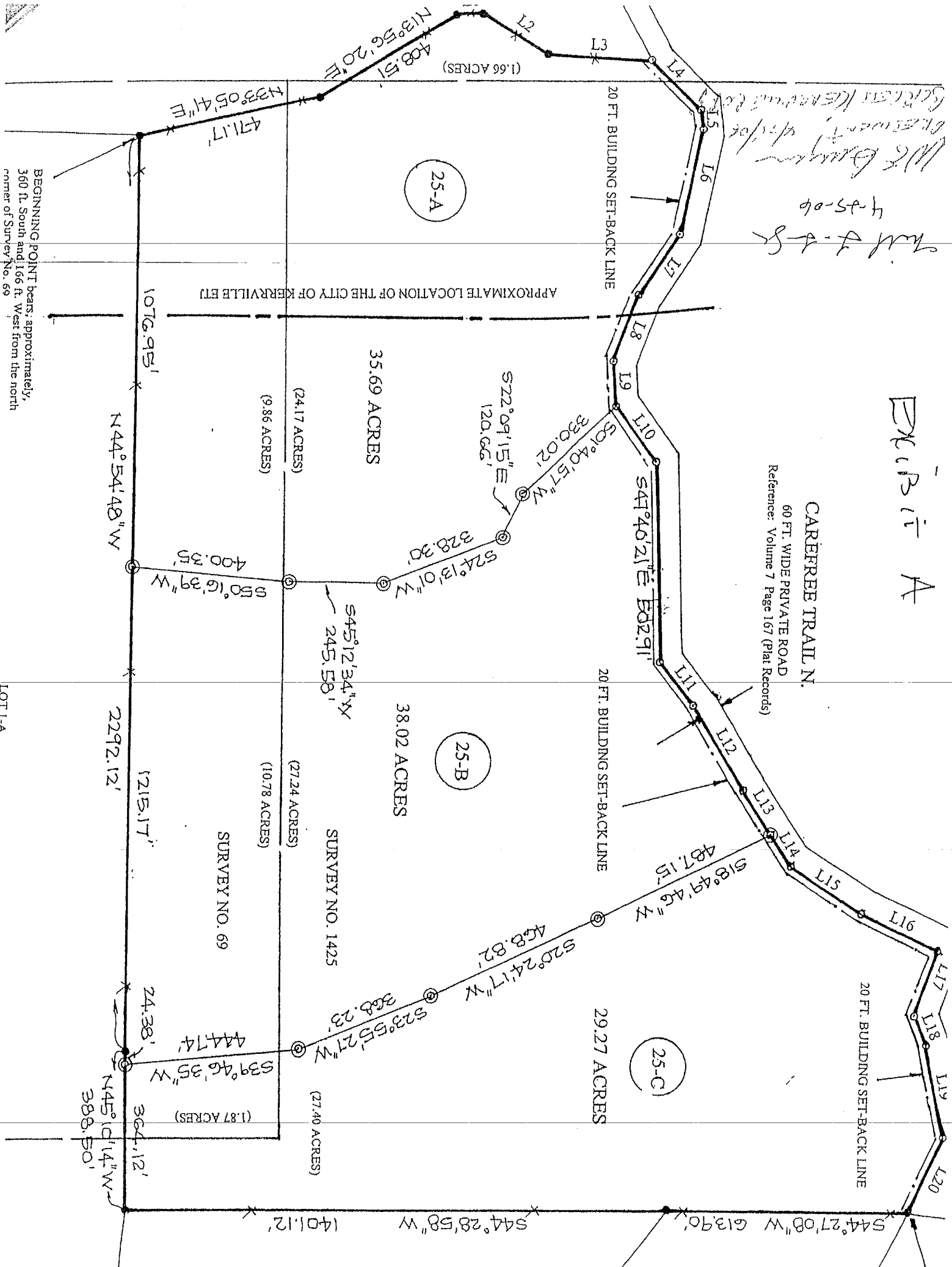


EXHIBIT A

July 7-8-8
4-25-06
W.C. Brumby
Plateman's Office
Scotts Kerrville, Texas

CAREFREE TRAIL N.
60 FT. WIDE PRIVATE ROAD
Reference: Volume 7 Page 167 (Plat Records)



BEGINNING POINT bears, approximately, 360 ft. South and 166 ft. West from the north corner of Survey No. 69

LOT 1-A