

DRAWN BY: FJP

FIELD BOOK: 1830/13

FIELD CREW: J.W.

DWG NO.: 16-32-C-V

DIGITAL FILE: S:\Surveys\Brandt Trust SH 195.dwg\Brandt Trust.dwg

TAX I.D. NO: R009995

REQUESTED BY: CAL BRANDT

TRACT 3

50.91 Acres of land out of the J. HORNSBY SURVEY, Abstract No. 285 in Williamson County, Texas, being part of that called 137.3 acres conveyed to The Brandt Trust for the Benefit of Carl Richmond Brandt, by a deed recorded in Document #9752653, of the Official Public Records of Williamson County, Texas.

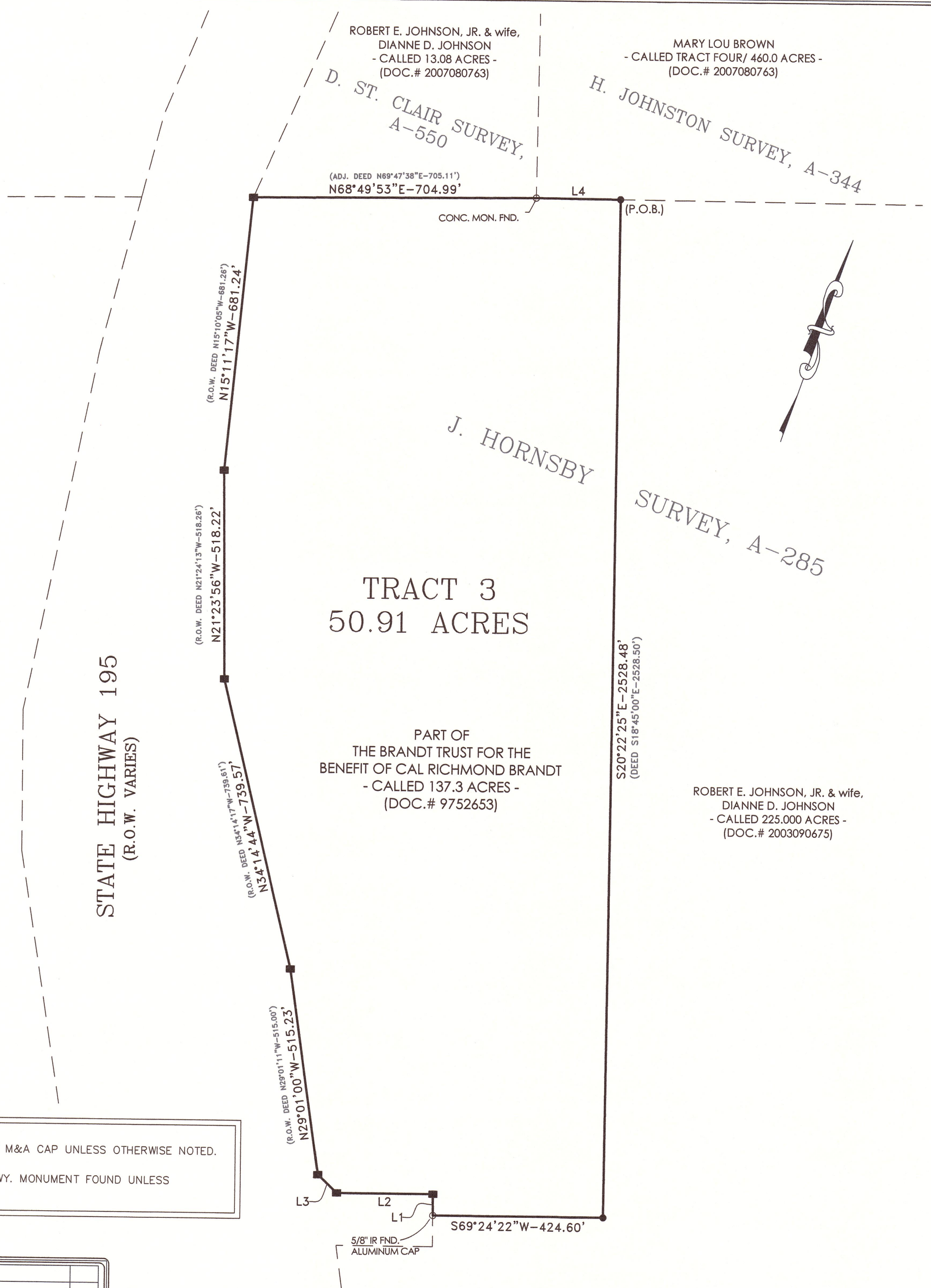
NOTE:
All bearings are based upon the Texas State Plane Coordinate System, NAD 83 (CORS 96), Texas Central Zone as per Leica Texas Smartnet GPS observations.
All distances are surface distance.
Combined scale factor=1.0001168.

NOTE:
Survey prepared without the benefit of title commitment, no further search for easements or restrictions has been made by this company. Easements that are aware of by this company have been shown.

LINE TABLE			
LINE	BEARING	LENGTH	R.O.W. or DEED CALLS
L1	N20°54'59"W	53.05'	N20°42'50"W - 53.15' (R.O.W)
L2	S69°20'15"W	240.51'	S69°16'45"W - 240.69' (R.O.W)
L3	N66°50'05"W	65.24'	N66°52'40"W - 65.23' (R.O.W)
L4	N69°44'08"E	210.41'	N71°00'00"E (DEED)

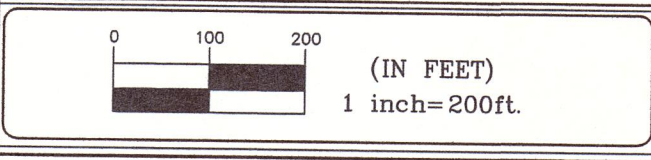
TRACT 3 50.91 ACRES

PART OF
THE BRANDT TRUST FOR THE
BENEFIT OF CAL RICHMOND BRANDT
- CALLED 137.3 ACRES -
(DOC.# 9752653)



- = CORNERS ARE 1/2" IR SET W/ M&A CAP UNLESS OTHERWISE NOTED.
- = CORNERS ARE BRASS CAP HWY. MONUMENT FOUND UNLESS OTHERWISE NOTED.

No.	DATE	REMARKS	BY
REVISIONS			



MITCHELL & ASSOCIATES, INC.
ENGINEERING & SURVEYING
102 N. COLLEGE ST., KILLEEN, TEXAS (254) 634-5541
T. B. F. L. S. FIRM REGISTRATION NO. 100204-00

W.C.D.R.- Williamson County Deed Records.
O.P.R.- Official Public Records of Real Property of Williamson County, Texas.

