

- ◆ 80+/- Acres in Madison County, MS!
- ◆ Live stock ready pasture with pond!
- ◆ Mostly fenced, timber and pasture mix.
- ◆ Easy Access and Lots of Road Frontage!
- ◆ All utilities at Road!



\$216,000

MADISON COUNTY PASTURE & REC



This tract has the essentials to meet all of your land needs. It is located in North Madison County and is only a short drive from the Canton area. It contains an almost equal mix of timber and fenced pasture land on very gently rolling terrain and is highlighted by the presence of a small pond. This combination makes it live stock and recreational use ready. One long side of the tract is paralleled by road frontage with all utilities present at the road. There is lots of room and many possible sites to build your dream home or camp on this piece of property. Don't pass on this opportunity.

Call Keith today for more information or to schedule your private showing .



Keith Carruth
Associate Broker, Land Specialist
4 Corner Properties, LLC (4CP)
577 Highway 51 N., Suite A,
Ridgeland, MS 39157



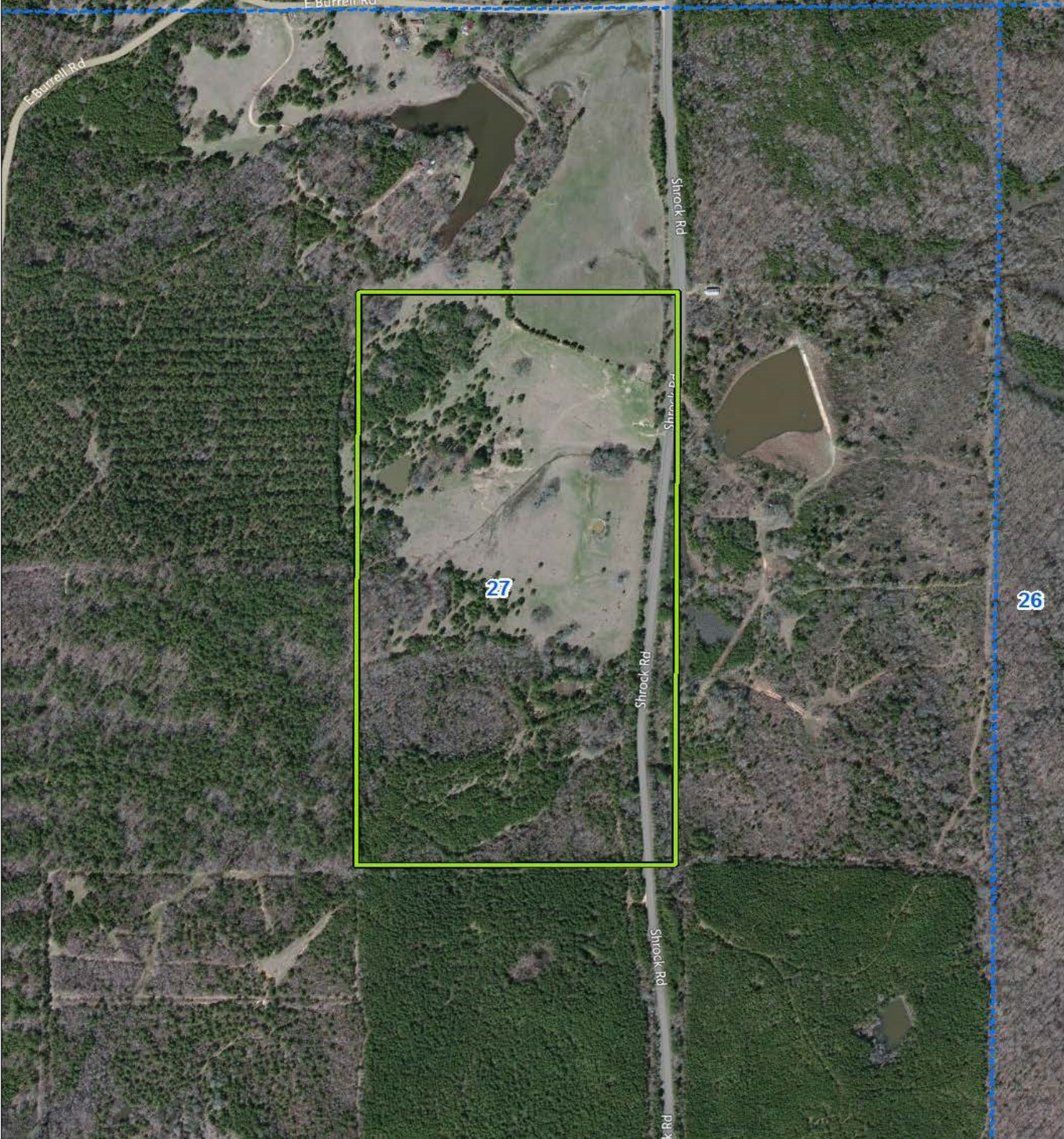
Information is Believed to be Accurate but not Guaranteed



Keith Carruth
Associate Broker, Realtor®,
Land Specialist
Mobile 601-503-5392
KCarruth@4CornerProp.com
Www.4CornerProp.com

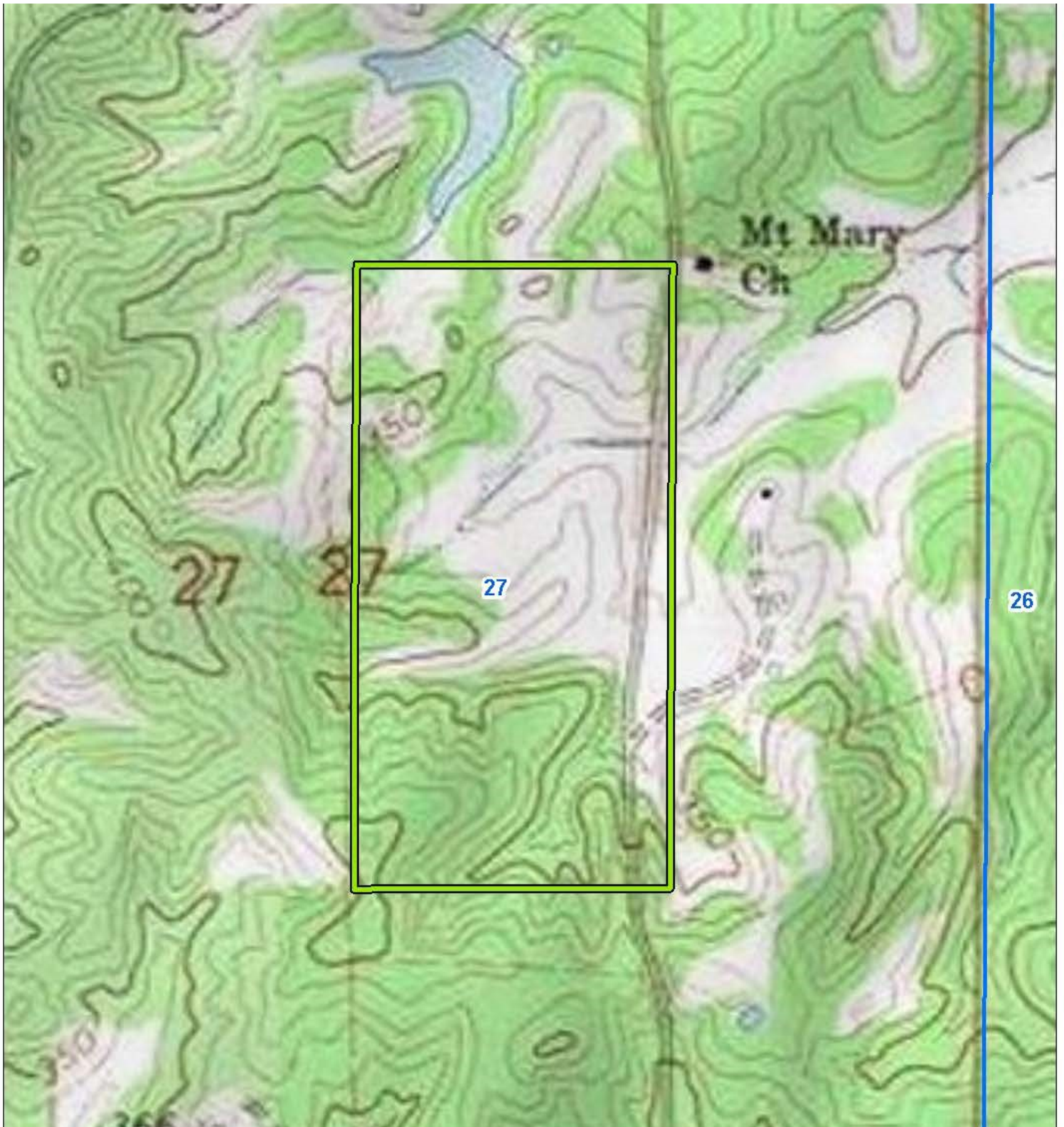


AERIAL



Keith Carruth
Associate Broker, Realtor[®],
Land Specialist
Mobile 601-503-5392
KCarruth@4CornerProp.com
Www.4CornerProp.com

TOPO



Keith Carruth
Associate Broker, Realtor®,
Land Specialist
Mobile 601-503-5392
KCarruth@4CornerProp.com
Www.4CornerProp.com

