

855 S. Pear Orchard Rd.
Suite 401
Ridgeland, MS 39157



Office: 601-952-2828
Fax: 601-952-2829
www.4cornerprop.com

HARD TO FIND! 67+/- Acre Horse/Cattle Farm

- Located in South Hinds County
- Mostly Fenced
- Two Ponds
- Horse Stables and Barn
- Livestock Ready
- Gently Rolling Topography
- Secluded Homestead
- Newly Remodeled Modular Home
 - Wood Burning Stove
 - Hardwood Floors
 - Utilities Include Water, Gas, Satellite TV, and Electricity
- Perfect Weekend Getaway for the Small Farmer



\$199,900



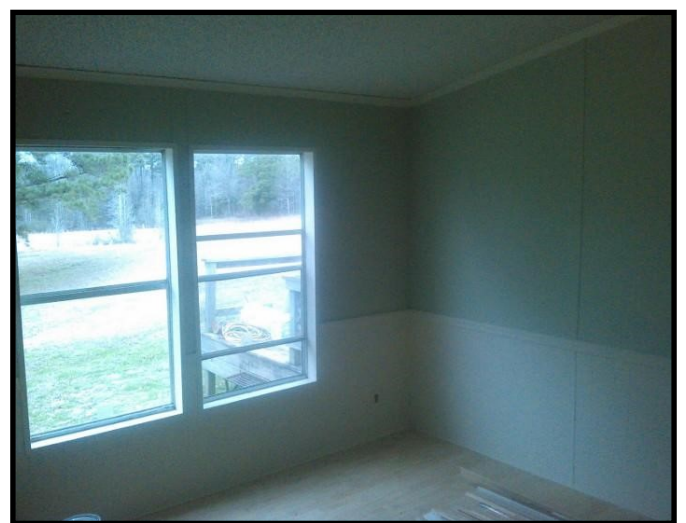
William Tyndall, Realtor®
601-551-6296
wtyndall@4cornerprop.com



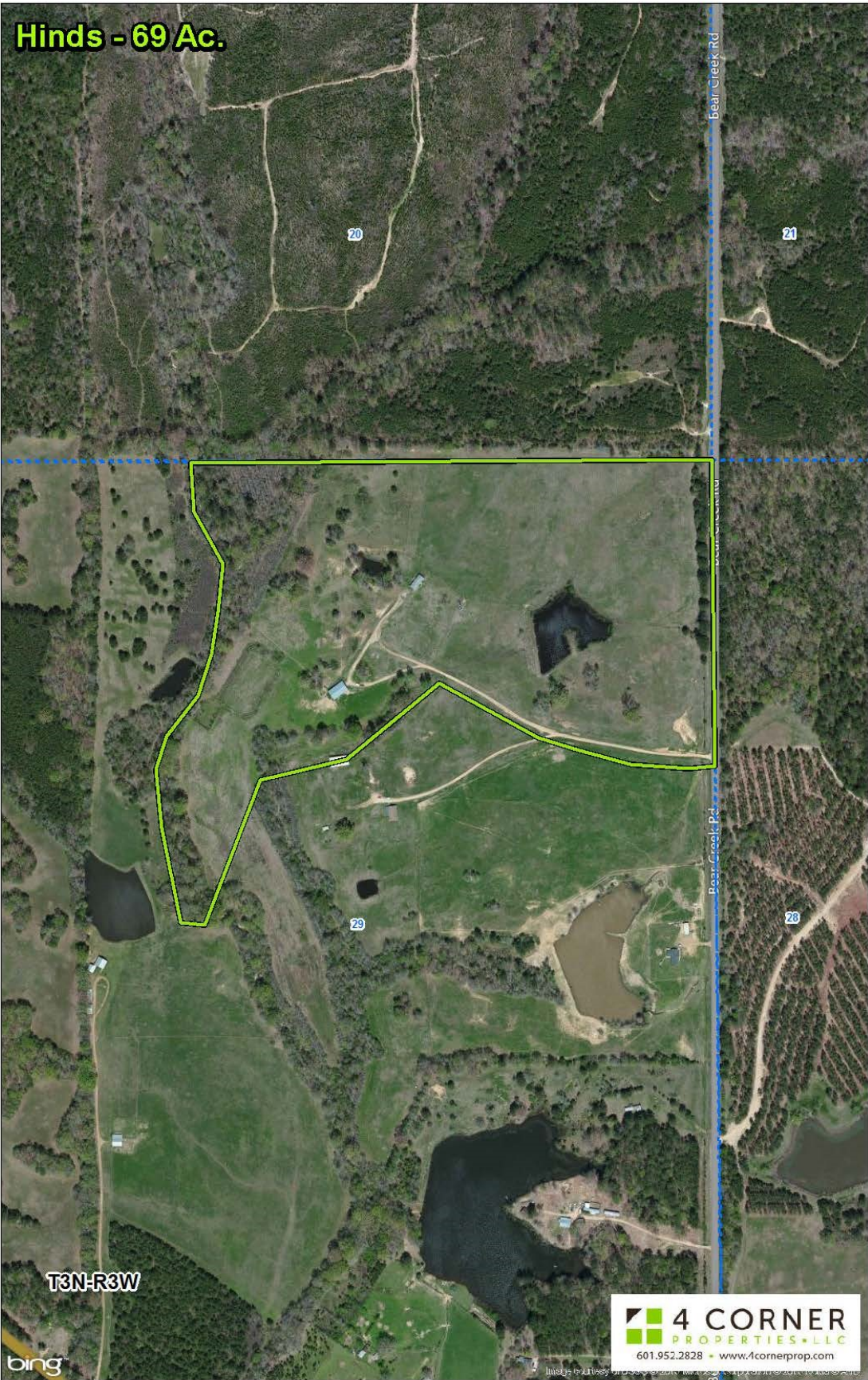
Information is Believed to be Accurate but not Guaranteed



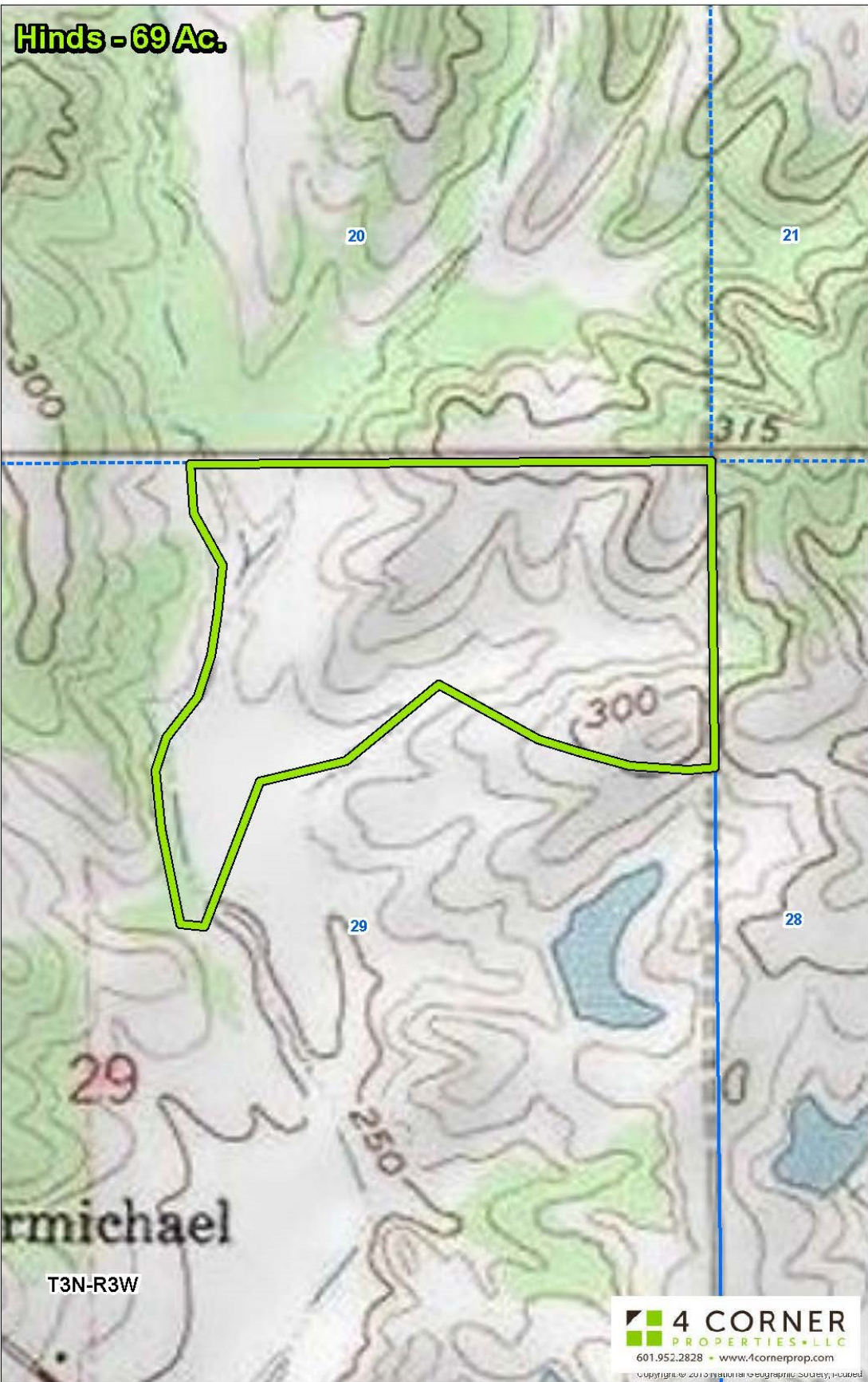
 **4 CORNER**
PROPERTIES • LLC
601.952.2828 • www.4cornerprop.com



 **4 CORNER**
PROPERTIES • LLC
601.952.2828 • www.4cornerprop.com

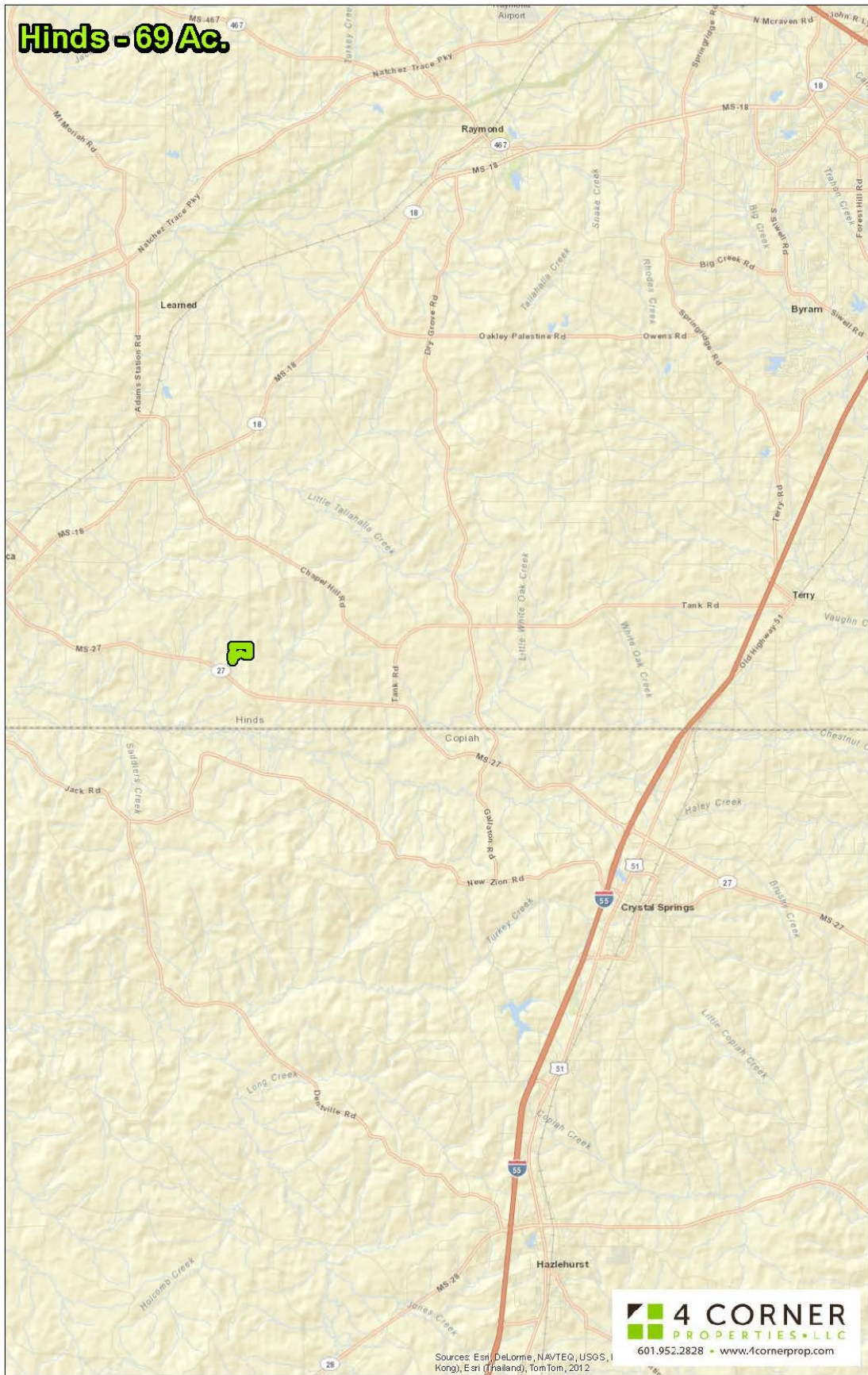


aerial



topo

Hinds - 69 Ac.



directional