



ATTENTION HUNTERS OR DEVELOPERS— MUST SEE!



- ◆ *80 acres of rolling hills, with 25 y/o Pines and scattered hardwoods*
- ◆ *Located in Yalobusha County, MS near just east of Coffeeville*
- ◆ *Easy access with great public road frontage*
- ◆ *Priced only @ \$119,600.00 or \$1,495/ac , see me for details TODAY!*



G.W. Stewart, REALTOR®
gwstewart@4cornerprop.com
601.757.3009 cell
601-510-9446 efax

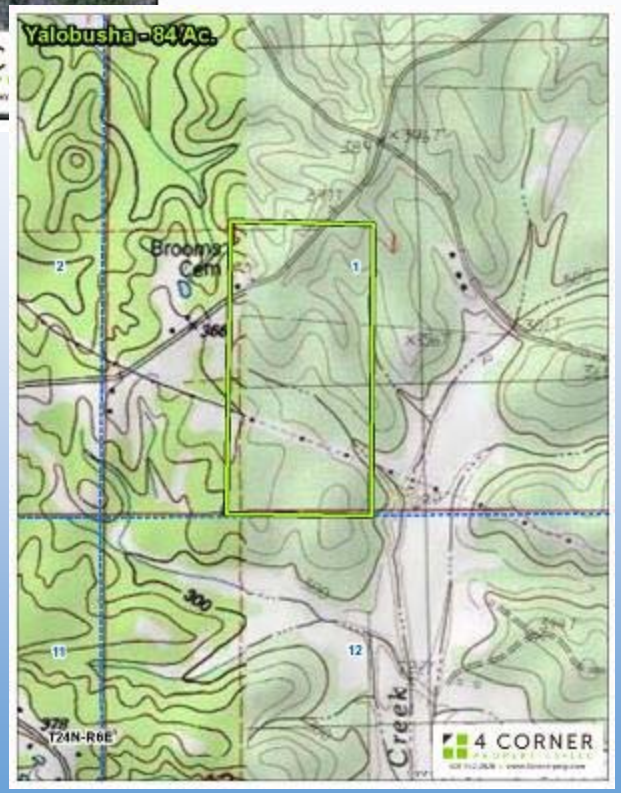
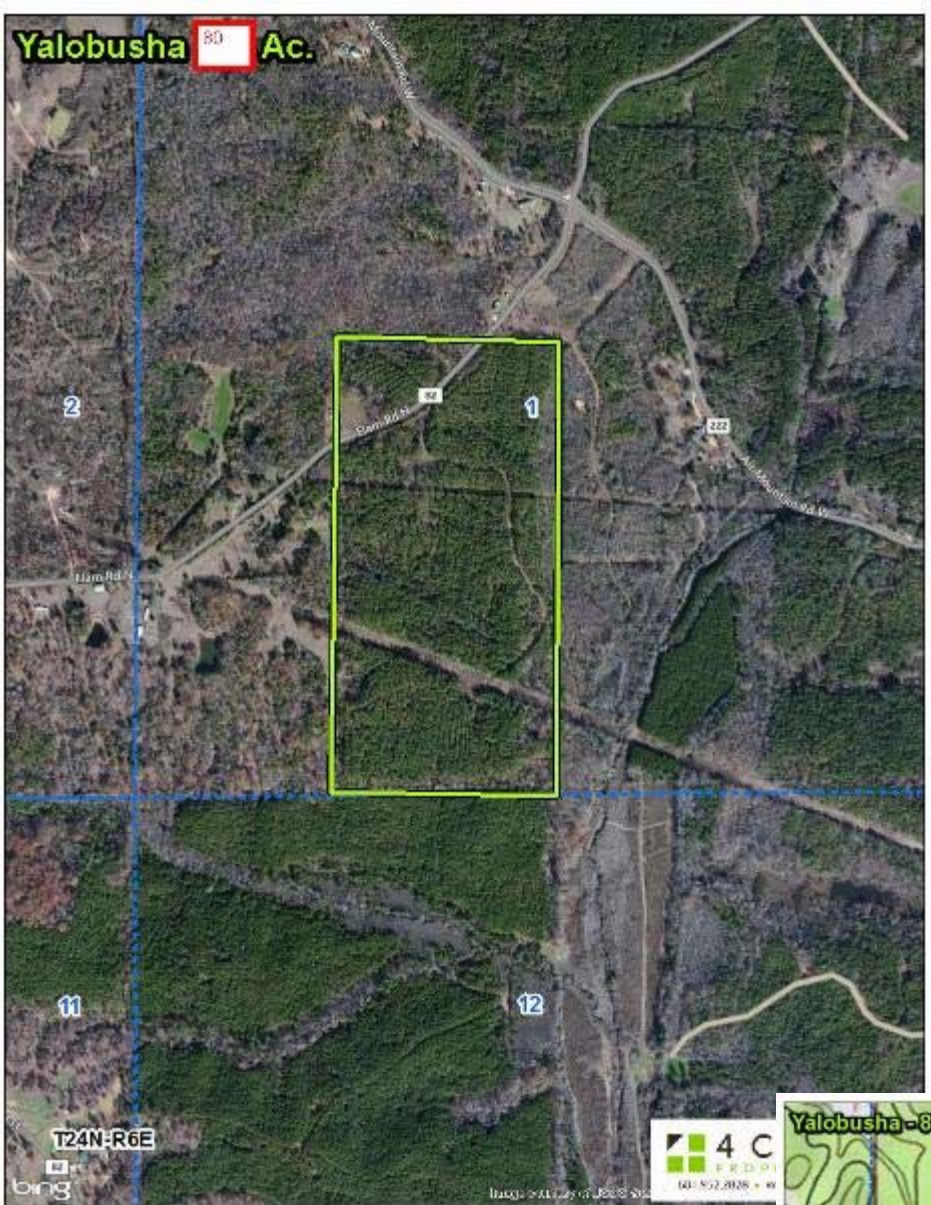
4 Corner Properties, LLC (4CP)
855 S. Pear Orchard Road Ste.401
Ridgeland, MS 39157
601-952-2828 office

Miss-Lou Land PRO... visit us at mslandpro.com

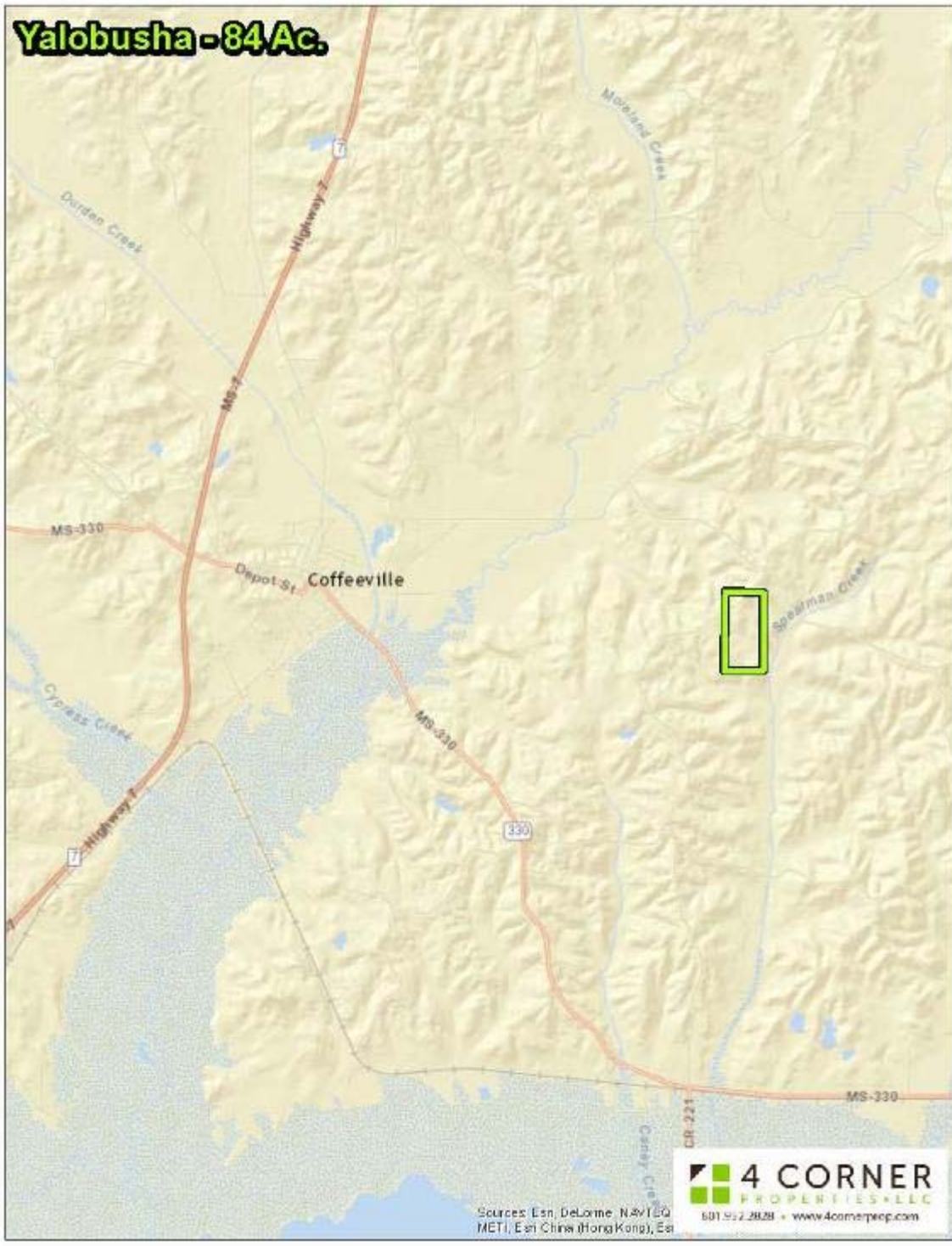








Yalobusha - 84 Ac.



G.W. Stewart, REALTOR®
gwstewart@4cornerprop.com
601.757.3009 cell
601-510-9446 efax

4 Corner Properties, LLC (4CP)
855 S. Pear Orchard Road Ste.401
Ridgeland, MS 39157
601-952-2828 office

Miss-Lou Land PRO... visit us at mslandpro.com