


# anderson



This map is not the official regulatory FIRM or DFIRM. Its purpose is to assist with determining potential flood risk for the selected location.

Map Created on 3/9/2015

 Location of the mouse click

O  
Cabin  
Location

### User Notes:

### Disclaimer:

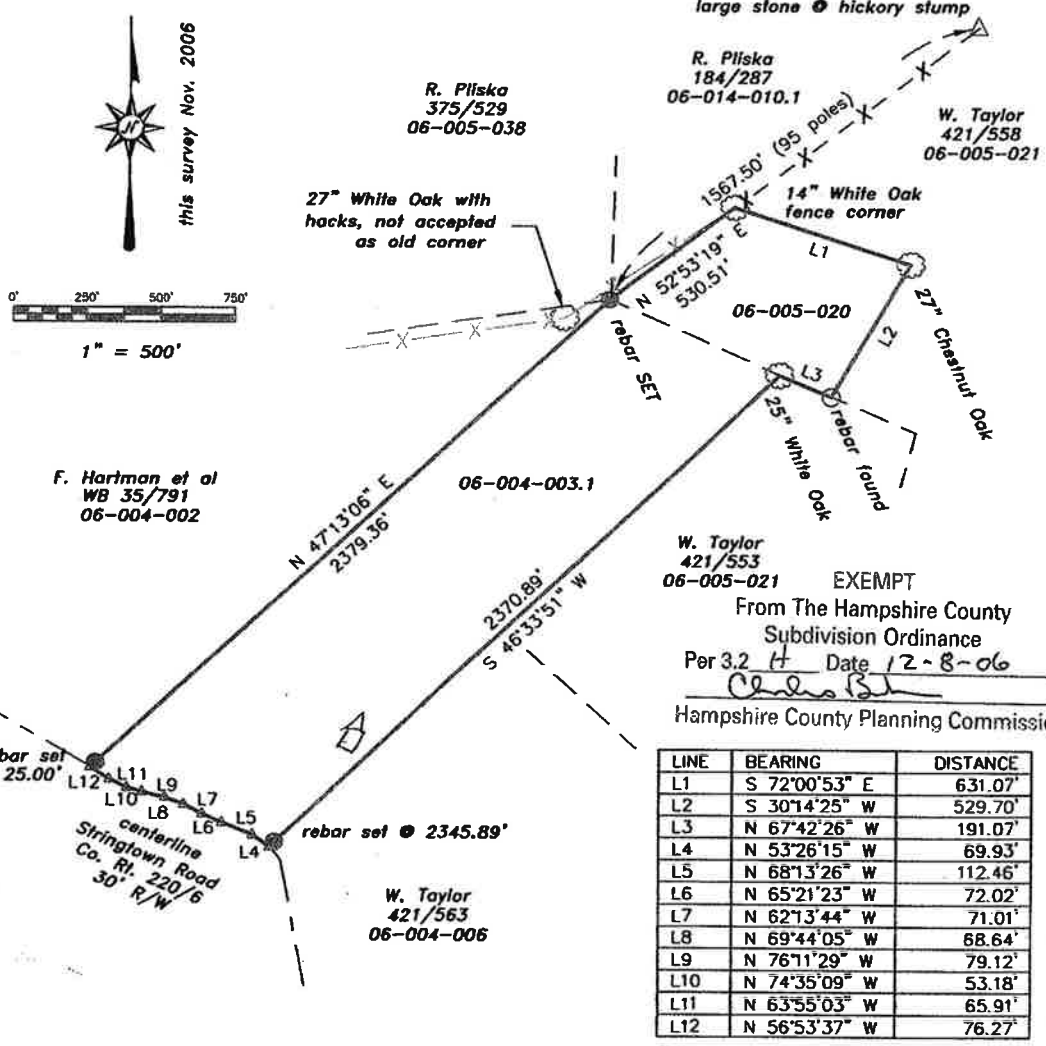
The online map is for use in administering the National Flood Insurance Program. It does not necessarily identify all areas subject to flooding, particularly from local drainage sources of small size. To obtain more detailed information in areas where Base Flood Elevations have been determined, users are encouraged to consult the latest Flood Profile data contained in the official flood insurance study. These studies are available online at [www.msc.fema.gov](http://www.msc.fema.gov).

WV Flood Tool is supported by FEMA, WV NFIP Office, and WV GIS Technical Center  
(<http://www.MapWV.gov/flood>)

Plat of Survey of BOOK 460 PAGE 749  
40.81 Acres, +/-\*

for Howard and Bette Joyce Calkins  
All of D.B. 193/475 and  
PINs 06-004-003.1 and 06-005-020  
Mill Creek District Hampshire County WV.  
\*includes 0.23 ac. within Co. Rt. 220/6 R/W

The 10-1/2 ac. tract (old call), PIN 06-005-020,  
is to be merged with the 30.72 ac. tract (old call),  
PIN 06-004-003.1. Any further modification  
of this land area shall be in compliance  
with the county subdivision ordinance.



LINE	BEARING	DISTANCE
L1	S 72°00'53" E	631.07'
L2	S 30°14'25" W	529.70'
L3	N 67°42'26" W	191.07'
L4	N 53°26'15" W	69.93'
L5	N 68°13'26" W	112.46'
L6	N 65°21'23" W	72.02'
L7	N 62°13'44" W	71.01'
L8	N 69°44'05" W	68.64'
L9	N 76°11'29" W	79.12'
L10	N 74°35'09" W	53.18'
L11	N 63°55'03" W	65.91'
L12	N 56°53'37" W	76.27'



Green Engineering Office  
Burlington, WV. 304/289-5033



RECORDED TO 31428  
RECORDED DATE 12/11/2006  
INSTRUMENT TYPE REEF  
BOOK/PAGE 460-749  
RECORD FEE 10.00  
TRANSFER TAX 25.00  
\$2.80  
HARRIS COUNTY 10-43-45 08  
SHARON LITK