

P.O. Box 65  
No. 4 Executive Circle  
Arkadelphia, AR 71923  
(870) 246-5757  
FAX 1-870-246-3341  
E-mail: [arkadelphia@kingwoodforestry.com](mailto:arkadelphia@kingwoodforestry.com)



Other Kingwood Locations:  
P.O. Box 1290  
145 Greenfield Drive  
Monticello, AR 71657  
(870) 367-8567  
FAX 1-870-367-8424

P.O. Box 5887  
4414 Galleria Oaks  
Texarkana, TX 75505  
(903) 831-5200  
FAX 1-903-831-9988

**Listing  
#4469**

## NOTICE OF LAND SALE

— BLEVINS 40 TRACT —

**Bid Date: Friday, March 27, 2015 @ 3:00 P. M.**

— 1989 Pine Plantation on County Road —

Kingwood Forestry Services, Inc. has been authorized to manage the sale of 40 acres, more or less, in Hempstead County, Arkansas (see attached maps).

**Location:** The Blevins 40 Tract is located approximately three (3) miles east of Blevins and is described as the SE¼ of SE¼, Section 14, Township 10 South, Range 24 West, containing a total of 40 acres, more or less, Hempstead County, Arkansas.

**Tract Description:** The Blevins 40 Tract contains ±26-year-old pine plantation (thinned in 2003), with native hardwood around a branch of Marlbrook Creek. Terrain is gently rolling, with loblolly pine site index averaging 86 feet at base age of 50 years. Soils consist of Saffell gravelly fine sandy loams and Smithton fine sandy loams. Access is excellent with one-quarter-mile frontage on gravel County Road 256 along east line of the tract. Electricity is available at county road. The southwest corner of the tract contains a small pond. Tract offers potential for home site and forest recreation, in addition to timberland investment.

**Merchantable Timber:** Kingwood Forestry Services conducted an inventory (one point/acre) in December of 2014. Based on the Kingwood inventory, estimated tree counts and volumes are as follows:

<b>Pine Sawtimber</b>	<b>1,376 Trees</b>	<b>92,606 Bd. Ft.</b>	<b>851 Tons</b>
<b>Pine Chip N' Saw</b>	<b>624 Trees</b>	<b>18,401 Bd. Ft.</b>	<b>195 Tons</b>
<b>Red Oak Sawtimber</b>	<b>42 Trees</b>	<b>5,049 Bd. Ft.</b>	<b>38 Tons</b>
<b>Sweetgum Sawtimber</b>	<b>18 Trees</b>	<b>1,273 Bd. Ft.</b>	<b>13 Tons</b>
<b>Misc. Hardwood Sawtimber</b>	<b>33 Trees</b>	<b>4,363 Bd. Ft.</b>	<b>30 Tons</b>
<b>Pine Pulpwood</b>	<b>656 Trees</b>		<b>144 Tons</b>
<b>Hardwood Pulpwood</b>	<b>2,412 Trees</b>		<b>468 Tons</b>

*Due to variations in cruising methods, utilization standards and scaling practices, tree counts and timber volumes cannot be guaranteed. Volume tables in Tons and Board Feet are included in this notice. NOTE: Additional timber volume tables (tree counts by species, diameter, and height) are available on our website at: [www.kingwoodforestry.com/land-sales.html](http://www.kingwoodforestry.com/land-sales.html)*

**Method of Sale:** The tract will be sold on the basis of lump sum sealed bids. Bids will be opened at the Kingwood Forestry office at **3:00 P.M., Friday, March 27, 2015**, at #4 Executive Circle, Arkadelphia, Arkansas. Mailed offers should be addressed to Kingwood Forestry Services, Inc., P.O. Box 65, Arkadelphia, AR 71923 with "**Blevins 40 Land Sale**" clearly marked in the lower left corner of the envelope to protect security of the offer. An offer form is attached. On mailed offers please call our office prior to bid opening to confirm receipt of offer. Buyers submitting offers are welcome to attend the bid opening. Offers may be delivered by fax to 870-246-3341. All faxed offers will be immediately acknowledged. Please await confirmation that your faxed offer has been received. No verbal telephone offers will be accepted. Anyone submitting an offer for the purchase of the property will be provided with a summary of bid results.

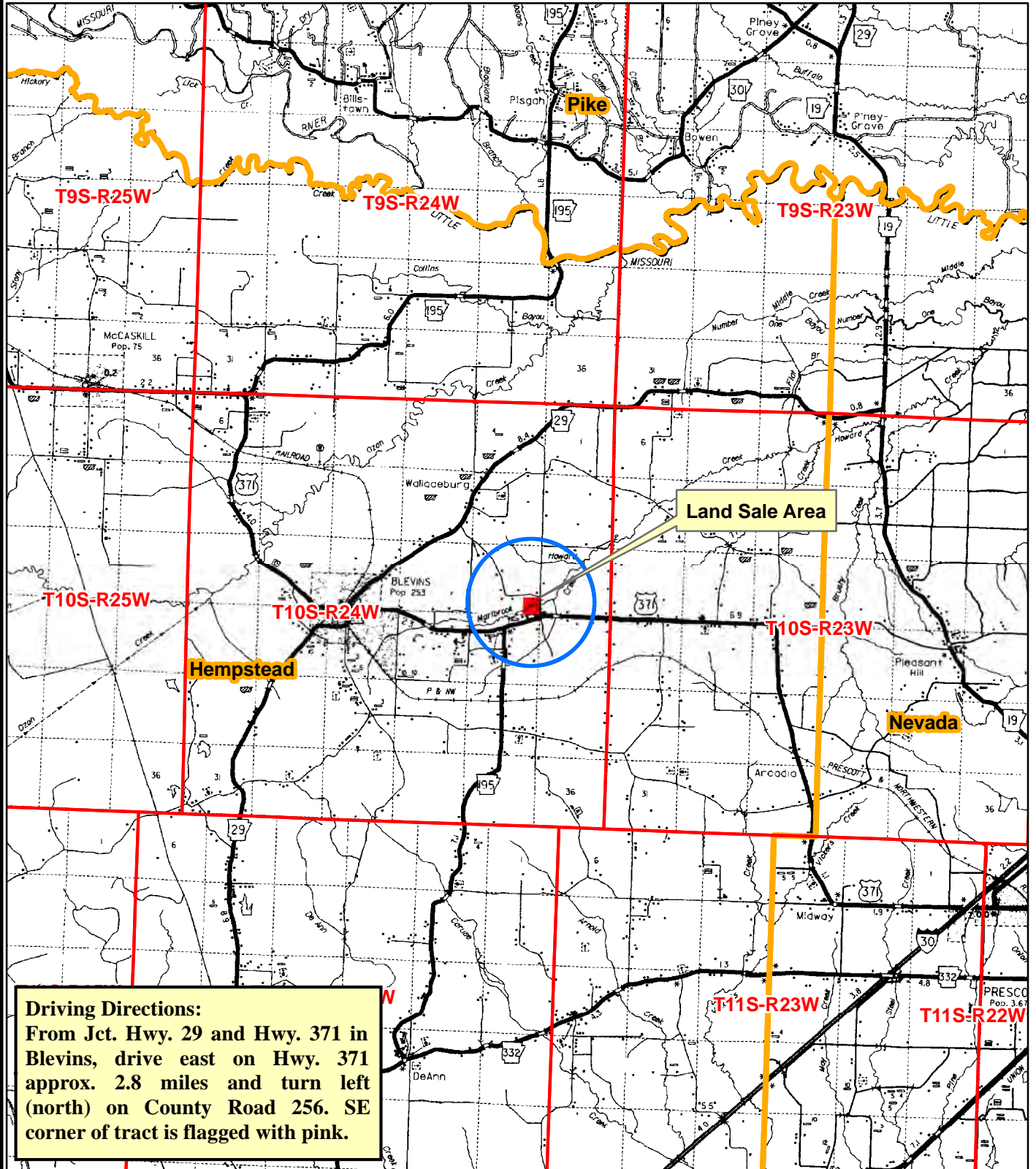
**-Continued on back of this page-**

**NOTICE OF LAND SALE**  
**— BLEVINS 40 TRACT —**  
**Bid Date: Friday, March 27, 2015 @ 3:00 P. M.**

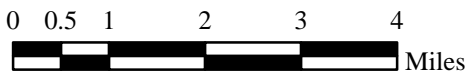
**Conditions of Sale:**

1. The landowner reserves the right to accept or reject any offer or to reject all offers.
2. Offers submitted will remain valid through 3:00 P.M., Monday, March 30, 2015. Successful bidder will be notified on or before that time by telephone, fax, or e-mail. Upon acceptance of an offer a formal Contract of Sale, with earnest money in the amount of 10% of purchase price, will be executed between the successful bidder and landowner within seven (7) business days. A sample Contract of Sale may be provided in advance upon request. Terms are cash at closing. Closing is expected to be held within thirty (30) days of offer acceptance.
3. Only offers for a specific dollar amount will be accepted. The parcel is being sold in its entirety for a single sum and not on a per acre basis. Advertised acreage is believed to be correct, but is not guaranteed. Offer price is for entire tract, regardless of acreage. The seller will not provide a survey. The attached maps are thought to be accurate but should not be considered as a survey plat.
4. Conveyance will be by Warranty Deed, subject to all previous mineral conveyances, reservations and exceptions, to any valid rights-of-way, easements, leaseholds, and to any protective covenants or restrictions, which may have been recorded affecting the property, with title assured through seller-provided title insurance policy. No environmental inspection or representation has been or will be made by seller. Owner will convey, without warranty, any mineral rights they may own on this property.
5. Seller will pay pro-rated property taxes (to date of closing), deed preparation, and one-half (1/2) of deed stamps. Buyer will pay recording fees and one-half (1/2) of deed stamps.
6. A local title company will conduct the closing with buyer and seller each paying one-half (1/2) of fees associated with closing services.
7. If prospective buyers or their agents wish to inspect the property, such property inspections shall be done at reasonable times during daylight hours. Prospective buyers and their agents understand and acknowledge that while on the property, prospective buyers and their agents assume all liability and shall indemnify Seller and its agents, property managers and Kingwood Forestry Services from and against all claims, demands, or causes of action, of every kind, nature and description relating to its access to or presence on the property.
8. Hunting equipment (such as deer stands, feeders, trail cameras, etc.) and any other man-made items found on the property do not convey unless stated otherwise.
9. Kingwood Forestry is the real estate firm acting as agent for the seller. All information presented in this prospectus is believed to be accurate. Prospective buyers are advised to verify information presented in this sale notice.
10. Questions regarding the land sale should be directed to licensed broker Pete Prutzman or sales agent Jimmy Don Thomas of Kingwood Forestry Services at 870-246-5757.

**NOTICE OF LAND SALE**  
**"Blevins 40 Tract"**  
**SE¼ of SE¼, Sec. 14, T10S, R24W**  
**Hempstead County, Arkansas**



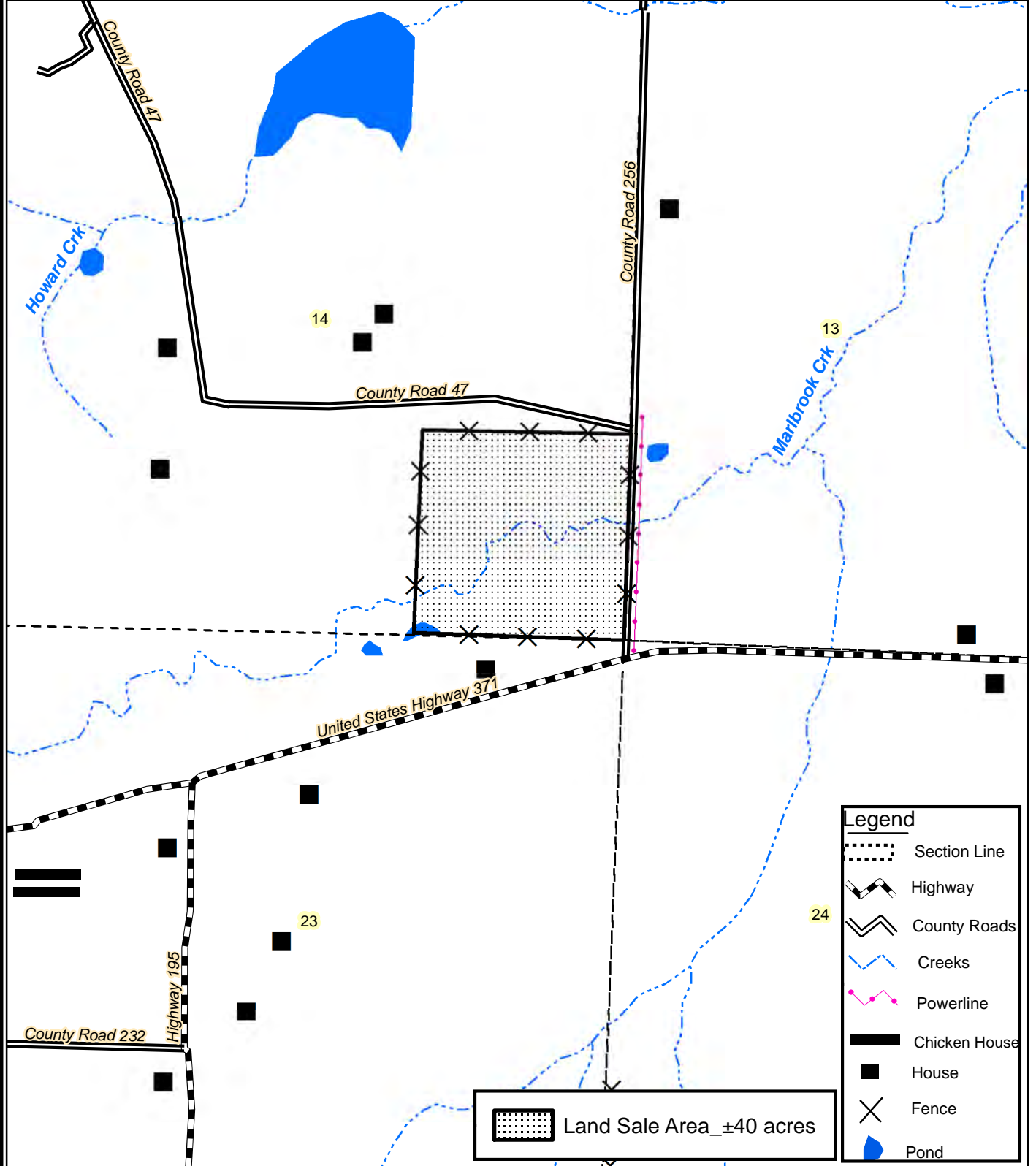
**Driving Directions:**  
 From Jct. Hwy. 29 and Hwy. 371 in Blevins, drive east on Hwy. 371 approx. 2.8 miles and turn left (north) on County Road 256. SE corner of tract is flagged with pink.



Created: March, 2015  
 By: JBK



**NOTICE OF LAND SALE**  
**"Blevins 40 Tract"**  
**SE¼ of SE¼, Sec. 14, T10S, R24W**  
**Hempstead County, Arkansas**



Legend	
	Section Line
	Highway
	County Roads
	Creeks
	Powerline
	Chicken House
	House
	Fence
	Pond

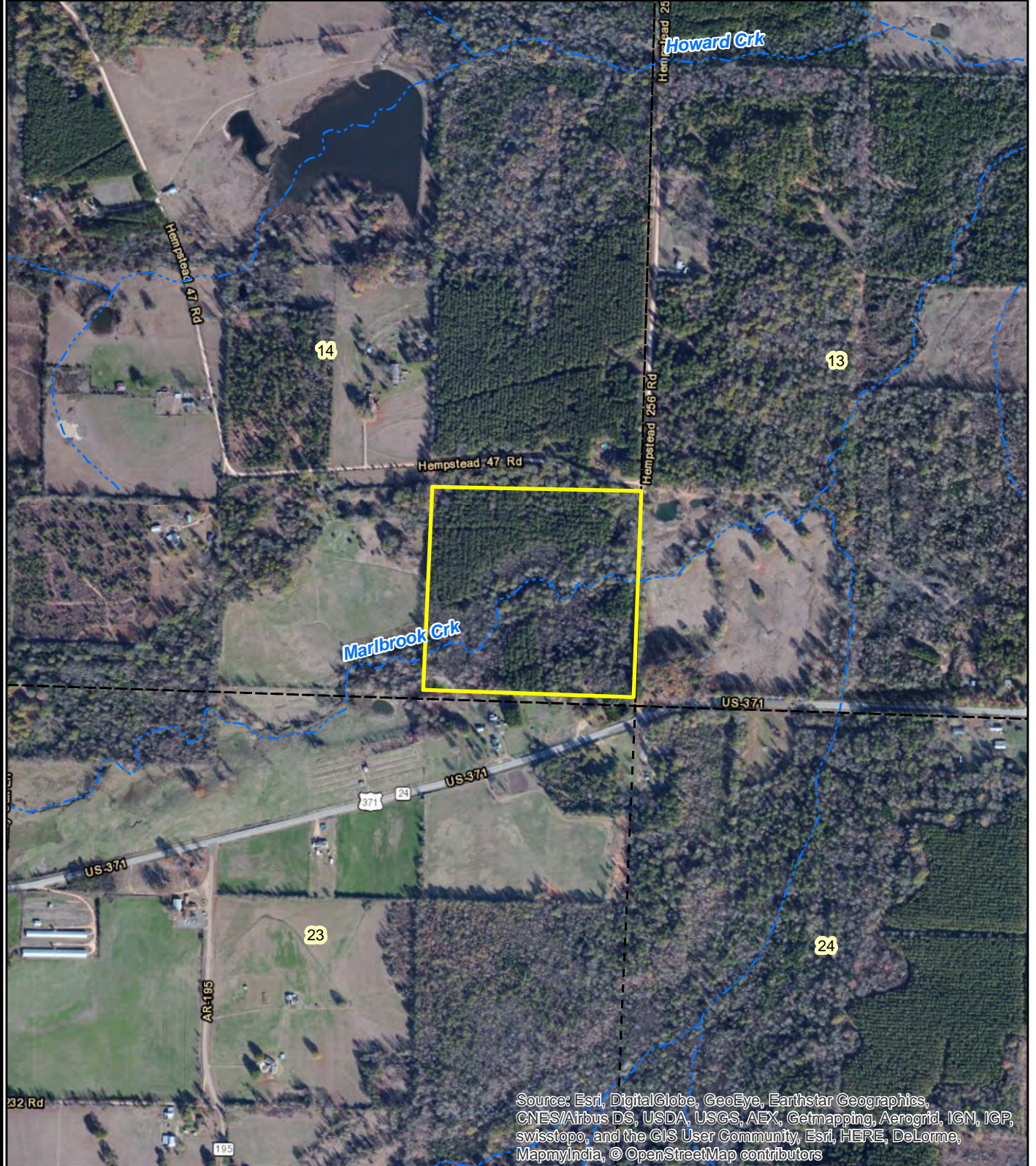
Land Sale Area\_±40 acres

0 0.125 0.25  
 Miles

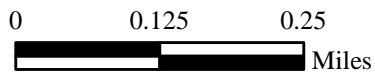


Created: March, 2015  
 By: JBK

**NOTICE OF LAND SALE**  
**"Blevins 40 Tract"**  
**SE¼ of SE¼, Sec. 14, T10S, R24W**  
**Hempstead County, Arkansas**

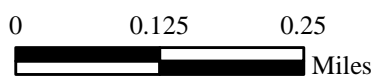
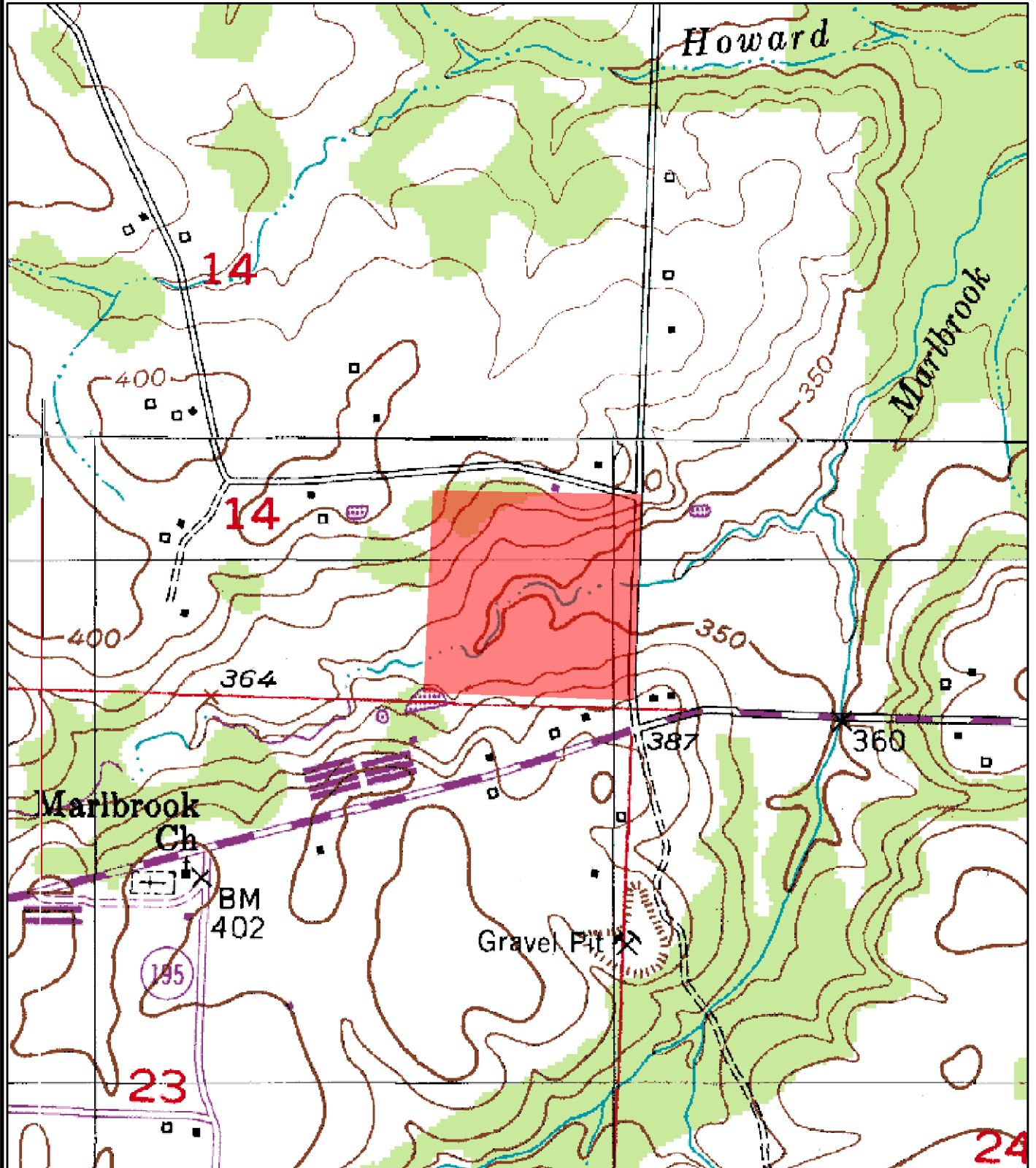


Source: Esri, DigitalGlobe, GeoEye, Earthstar Geographics, CNES/Airbus DS, USDA, USGS, AEX, Getmapping, Aerogrid, IGN, IGP, swisstopo, and the GIS User Community, Esri, HERE, DeLorme, MapmyIndia, © OpenStreetMap contributors



Created: March, 2015  
2011 ESRI Aerial Photography  
By: JBK

NOTICE OF LAND SALE  
"Blevins 40 Tract"  
SE¼ of SE¼, Sec. 14, T10S, R24W  
Hempstead County, Arkansas



Created: March, 2015  
By: JBK



**Kingwood Forestry Services, Inc.**  
**No. 4 Executive Circle**  
**Arkadelphia, AR 71923**

**Phone: 870-246-5757**  
**Fax: 870-246-3341**  
**Email: arkadelphia@kingwoodforestry.com**  
**Website: www.kingwoodforestry.com**

## TIMBER VOLUME ESTIMATES

**Stratum: Blevins 40**  
**Acres: 39**  
**Plots: 40**  
**Cruiser: JDThomas**

**Cruise Date: 12/04/2014**  
**Cruise Type: Point**  
**Plot Size/BAF: 20.00**

### Sweetgum

Product	Stratum Total				Per Acre			Average Tree	
	Trees	Tons	Doyle BF	BA	Trees	Tons	Doyle BF	DBH	Height
Sawtimber	18	13	1,273	0.5	0	0.3	32.6	14.0	32.5
Pulpwood	290	116	0	4.3	7	3.0	0.0	9.8	36.0
<b>Class Total</b>	<b>309</b>	<b>129</b>	<b>1,273</b>	<b>4.8</b>	<b>8</b>	<b>3.3</b>	<b>32.6</b>	<b>10.0</b>	<b>35.8</b>

### Red Oak

Product	Stratum Total				Per Acre			Average Tree	
	Trees	Tons	Doyle BF	BA	Trees	Tons	Doyle BF	DBH	Height
Sawtimber	42	38	5,049	2.0	1	1.0	129.5	18.2	21.3
Pulpwood	114	20	0	1.8	3	0.5	0.0	9.9	19.0
<b>Class Total</b>	<b>157</b>	<b>59</b>	<b>5,049</b>	<b>3.8</b>	<b>4</b>	<b>1.5</b>	<b>129.5</b>	<b>12.2</b>	<b>19.6</b>

### Pine

Product	Stratum Total				Per Acre			Average Tree	
	Trees	Tons	Doyle BF	BA	Trees	Tons	Doyle BF	DBH	Height
Sawtimber	1,376	851	92,606	36.3	35	21.8	2,374.5	13.6	34.4
Chip-N-Saw	624	195	18,401	9.3	16	5.0	471.8	10.3	29.1
Pulpwood	656	144	0	6.5	17	3.7	0.0	8.3	39.1
Topwood	0	176	0	0.0	0	4.5	0.0	0.0	0.0
<b>Class Total</b>	<b>2,656</b>	<b>1,366</b>	<b>111,006</b>	<b>52.0</b>	<b>68</b>	<b>35.0</b>	<b>2,846.3</b>	<b>11.5</b>	<b>34.3</b>

### Misc. Hardwood

Product	Stratum Total				Per Acre			Average Tree	
	Trees	Tons	Doyle BF	BA	Trees	Tons	Doyle BF	DBH	Height
Sawtimber	33	30	4,363	1.5	1	0.8	111.9	17.7	23.9
Pulpwood	2,008	332	0	21.5	51	8.5	0.0	8.4	24.1
<b>Class Total</b>	<b>2,041</b>	<b>361</b>	<b>4,363</b>	<b>23.0</b>	<b>52</b>	<b>9.3</b>	<b>111.9</b>	<b>8.6</b>	<b>24.1</b>
<b>Stratum Total</b>	<b>5,162</b>	<b>1,915</b>	<b>121,691</b>	<b>83.5</b>	<b>132</b>	<b>49.1</b>	<b>3,120.3</b>	<b>10.3</b>	<b>29.9</b>

**THIS PAGE INTENTIONALLY LEFT BLANK**





**Kingwood Forestry Services, Inc.**  
**No. 4 Executive Circle**  
**Arkadelphia, AR 71923**

**Phone: 870-246-5757**  
**Fax: 870-246-3341**  
**Email: arkadelphia@kingwoodforestry.com**  
**Website: www.kingwoodforestry.com**

## ***TIMBER VOLUME ESTIMATES***

**Stratum: Blevins 40**  
**Acres: 39**  
**Plots: 40**  
**Cruiser: JDThomas**

**Cruise Date: 12/04/2014**  
**Cruise Type: Point**  
**Plot Size/BAF: 20.00**

### **Sweetgum**

<i>Product</i>	<i>Stratum Total</i>				<i>Per Acre</i>				<i>Average Tree</i>	
	<i>Trees</i>	<i>Tons</i>	<i>Doyle BF</i>	<i>BA</i>	<i>Trees</i>	<i>Tons</i>	<i>Doyle BF</i>	<i>DBH</i>	<i>Height</i>	
<b>Sweetgum</b>										
Sawtimber	18	13	1,273	0.5	0	0.3	32.6	14.0	32.5	
Pulpwood	290	116	0	4.3	7	3.0	0.0	9.8	36.0	
<b>Group Total</b>	<b>309</b>	<b>129</b>	<b>1,273</b>	<b>4.8</b>	<b>8</b>	<b>3.3</b>	<b>32.6</b>	<b>10.0</b>	<b>35.8</b>	
<b>Class Total</b>	<b>309</b>	<b>129</b>	<b>1,273</b>	<b>4.8</b>	<b>8</b>	<b>3.3</b>	<b>32.6</b>	<b>10.0</b>	<b>35.8</b>	

### **Red Oak**

<i>Product</i>	<i>Stratum Total</i>				<i>Per Acre</i>				<i>Average Tree</i>	
	<i>Trees</i>	<i>Tons</i>	<i>Doyle BF</i>	<i>BA</i>	<i>Trees</i>	<i>Tons</i>	<i>Doyle BF</i>	<i>DBH</i>	<i>Height</i>	
<b>Water Oak</b>										
Sawtimber	42	38	5,049	2.0	1	1.0	129.5	18.2	21.3	
Pulpwood	114	20	0	1.8	3	0.5	0.0	9.9	19.0	
<b>Group Total</b>	<b>157</b>	<b>59</b>	<b>5,049</b>	<b>3.8</b>	<b>4</b>	<b>1.5</b>	<b>129.5</b>	<b>12.2</b>	<b>19.6</b>	
<b>Class Total</b>	<b>157</b>	<b>59</b>	<b>5,049</b>	<b>3.8</b>	<b>4</b>	<b>1.5</b>	<b>129.5</b>	<b>12.2</b>	<b>19.6</b>	

### **Pine**

<i>Product</i>	<i>Stratum Total</i>				<i>Per Acre</i>				<i>Average Tree</i>	
	<i>Trees</i>	<i>Tons</i>	<i>Doyle BF</i>	<i>BA</i>	<i>Trees</i>	<i>Tons</i>	<i>Doyle BF</i>	<i>DBH</i>	<i>Height</i>	
<b>Natural Lob</b>										
Sawtimber	41	62	10,228	2.5	1	1.6	262.2	20.6	34.2	
Topwood	0	22	0	0.0	0	0.6	0.0	0.0	0.0	
<b>Group Total</b>	<b>41</b>	<b>84</b>	<b>10,228</b>	<b>2.5</b>	<b>1</b>	<b>2.1</b>	<b>262.2</b>	<b>20.6</b>	<b>34.2</b>	
<b>Planted Lob</b>										
Sawtimber	1,336	789	82,378	33.8	34	20.2	2,112.3	13.4	34.4	
Chip-N-Saw	624	195	18,401	9.3	16	5.0	471.8	10.3	29.1	
Pulpwood	656	144	0	6.5	17	3.7	0.0	8.3	39.1	
Topwood	0	154	0	0.0	0	3.9	0.0	0.0	0.0	
<b>Group Total</b>	<b>2,615</b>	<b>1,282</b>	<b>100,779</b>	<b>49.5</b>	<b>67</b>	<b>32.9</b>	<b>2,584.1</b>	<b>11.4</b>	<b>34.3</b>	
<b>Class Total</b>	<b>2,656</b>	<b>1,366</b>	<b>111,006</b>	<b>52.0</b>	<b>68</b>	<b>35.0</b>	<b>2,846.3</b>	<b>11.5</b>	<b>34.3</b>	

# TIMBER VOLUME ESTIMATES

**Stratum:** Blevins 40  
**Acres:** 39  
**Plots:** 40  
**Cruiser:** JDThomas

**Cruise Date:** 12/04/2014  
**Cruise Type:** Point  
**Plot Size/BAF:** 20.00

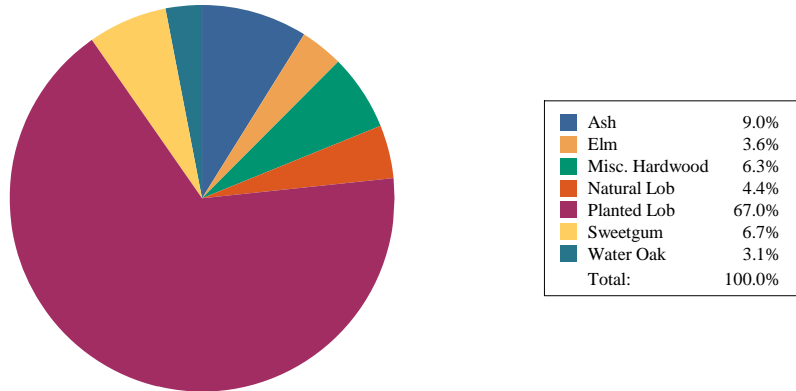
## Misc. Hardwood

Product	Stratum Total			Per Acre			Average Tree		
	Trees	Tons	Doyle BF	BA	Trees	Tons	Doyle BF	DBH	Height
<b>Ash</b>									
Sawtimber	13	7	1,174	0.5	0	0.2	30.1	16.9	21.0
Pulpwood	904	165	0	9.8	23	4.2	0.0	8.5	27.0
<b>Group Total</b>	916	173	1,174	10.3	23	4.4	30.1	8.6	26.9
<b>Elm</b>									
Pulpwood	408	68	0	4.8	10	1.8	0.0	8.9	20.7
<b>Group Total</b>	408	68	0	4.8	10	1.8	0.0	8.9	20.7
<b>Misc. Hardwood</b>									
Sawtimber	21	22	3,189	1.0	1	0.6	81.8	18.2	25.7
Pulpwood	695	98	0	7.0	18	2.5	0.0	8.1	22.4
<b>Group Total</b>	716	121	3,189	8.0	18	3.1	81.8	8.4	22.5
<b>Class Total</b>	2,041	361	4,363	23.0	52	9.3	111.9	8.6	24.1
<b>Stratum Total</b>	5,162	1,915	121,691	83.5	132	49.1	3,120.3	10.3	29.9

# TIMBER VOLUME ESTIMATES

## Tons Per Acre By Species Group

For Blevins 40



**THIS PAGE INTENTIONALLY LEFT BLANK**



**Kingwood Forestry Services, Inc.**  
**No. 4 Executive Circle**  
**Arkadelphia, AR 71923**

**Phone: 870-246-5757**  
**Fax: 870-246-3341**  
**Email: arkadelphia@kingwoodforestry.com**  
**Website: www.kingwoodforestry.com**

## ***TIMBER VOLUME ESTIMATES***

**Stratum: Blevins 40**  
**Acres: 39**  
**Plots: 40.00**  
**Cruiser: JDThomas**

**Cruise Date: 12/04/2014**  
**Cruise Type: Point**  
**Plot Size/BAF: 20.00**

### **Sweetgum**

<b>Sweetgum</b>		<i>Stratum Total</i>						<i>Per Acre</i>				<i>Average Tree</i>	
<i>Sawtimber</i>	<i>DBH</i>	<i>Trees</i>	<i>Tons</i>	<i>Doyle BF</i>	<i>Cu. Ft. IB</i>	<i>BA</i>	<i>Trees</i>	<i>Tons</i>	<i>Doyle BF</i>	<i>Cu. Ft. IB</i>	<i>SL CFT/Ft</i>	<i>Height</i>	
	14	18	13	1,273	361	0.5	0	0.3	32.6	9.3	0.61	32.5	
<b>Sawtimber Total</b>	<b>14.0</b>	<b>18</b>	<b>13</b>	<b>1,273</b>	<b>361</b>	<b>0.5</b>	<b>0</b>	<b>0.3</b>	<b>32.6</b>	<b>9.3</b>	<b>0.61</b>	<b>32.5</b>	
<i>Pulpwood</i>	<i>DBH</i>	<i>Trees</i>	<i>Tons</i>	<i>Doyle BF</i>	<i>Cu. Ft. IB</i>	<i>BA</i>	<i>Trees</i>	<i>Tons</i>	<i>Doyle BF</i>	<i>Cu. Ft. IB</i>	<i>SL CFT/Ft</i>	<i>Height</i>	
	6	50	5	0	145	0.3	1	0.1	0.0	3.7	0.00	24.1	
	7	36	5	0	146	0.3	1	0.1	0.0	3.7	0.00	24.1	
	8	56	15	0	434	0.5	1	0.4	0.0	11.1	0.00	45.1	
	10	18	8	0	221	0.3	0	0.2	0.0	5.7	0.00	45.1	
	11	30	11	0	336	0.5	1	0.3	0.0	8.6	0.00	29.4	
	12	37	21	0	618	0.8	1	0.5	0.0	15.8	0.00	39.9	
	13	21	17	0	503	0.5	1	0.4	0.0	12.9	0.00	53.0	
	14	36	25	0	746	1.0	1	0.7	0.0	19.1	0.00	34.6	
	17	6	8	0	248	0.3	0	0.2	0.0	6.3	0.00	50.4	
<b>Pulpwood Total</b>	<b>9.8</b>	<b>290</b>	<b>116</b>	<b>0</b>	<b>3,397</b>	<b>4.3</b>	<b>7</b>	<b>3.0</b>	<b>0.0</b>	<b>87.1</b>	<b>0.00</b>	<b>36.0</b>	
<b>Sweetgum Total</b>	<b>10.0</b>	<b>309</b>	<b>129</b>	<b>1,273</b>	<b>3,758</b>	<b>4.8</b>	<b>8</b>	<b>3.3</b>	<b>32.6</b>	<b>96.4</b>	<b>0.61</b>	<b>35.8</b>	
<b>Sweetgum Total</b>	<b>10.0</b>	<b>309</b>	<b>129</b>	<b>1,273</b>	<b>3,758</b>	<b>4.8</b>	<b>8</b>	<b>3.3</b>	<b>32.6</b>	<b>96.4</b>	<b>0.61</b>	<b>35.8</b>	

### **Red Oak**

<b>Water Oak</b>		<i>Stratum Total</i>						<i>Per Acre</i>				<i>Average Tree</i>	
<i>Sawtimber</i>	<i>DBH</i>	<i>Trees</i>	<i>Tons</i>	<i>Doyle BF</i>	<i>Cu. Ft. IB</i>	<i>BA</i>	<i>Trees</i>	<i>Tons</i>	<i>Doyle BF</i>	<i>Cu. Ft. IB</i>	<i>SL CFT/Ft</i>	<i>Height</i>	

*Thursday, December 4, 2014*

# NOTICE OF LAND SALE

**Stratum:** Blevins 40  
**Acres:** 39  
**Plots:** 40.00  
**Cruiser:** JDThomas

**Cruise Date:** 12/04/2014  
**Cruise Type:** Point  
**Plot Size/BAF:** 20.00

## Red Oak

Water Oak		Stratum Total					Per Acre					Average Tree	
Sawtimber	DBH	Trees	Tons	Doyle BF	Cu. Ft. IB	BA	Trees	Tons	Doyle BF	Cu. Ft. IB	SL CFT/Ft	Height	
	16	7	6	643	147	0.3	0	0.1	16.5	3.8	0.86	24.5	
	17	19	17	2,058	441	0.8	0	0.4	52.8	11.3	0.97	24.5	
	18	6	4	530	109	0.3	0	0.1	13.6	2.8	1.20	16.5	
	21	4	4	594	109	0.3	0	0.1	15.2	2.8	1.63	16.5	
	22	7	8	1,224	218	0.5	0	0.2	31.4	5.6	1.79	16.5	
<b>Sawtimber Total</b>	<b>18.2</b>	<b>42</b>	<b>38</b>	<b>5,049</b>	<b>1,024</b>	<b>2.0</b>	<b>1</b>	<b>1.0</b>	<b>129.5</b>	<b>26.3</b>	<b>1.13</b>	<b>21.3</b>	
Pulpwood	DBH	Trees	Tons	Doyle BF	Cu. Ft. IB	BA	Trees	Tons	Doyle BF	Cu. Ft. IB	SL CFT/Ft	Height	
	7	36	0	0	0	0.3	1	0.0	0.0	0.0	0.00	17.0	
	8	28	5	0	122	0.3	1	0.1	0.0	3.1	0.00	18.9	
	10	18	5	0	122	0.3	0	0.1	0.0	3.1	0.00	18.9	
	13	11	5	0	146	0.3	0	0.1	0.0	3.7	0.00	24.1	
	14	9	0	0	0	0.3	0	0.0	0.0	0.0	0.00	18.0	
	16	7	5	0	146	0.3	0	0.1	0.0	3.7	0.00	24.1	
	18	6	0	0	0	0.3	0	0.0	0.0	0.0	0.00	18.0	
<b>Pulpwood Total</b>	<b>9.9</b>	<b>114</b>	<b>20</b>	<b>0</b>	<b>536</b>	<b>1.8</b>	<b>3</b>	<b>0.5</b>	<b>0.0</b>	<b>13.7</b>	<b>0.00</b>	<b>19.0</b>	
<b>Water Oak Total</b>	<b>12.2</b>	<b>157</b>	<b>59</b>	<b>5,049</b>	<b>1,560</b>	<b>3.8</b>	<b>4</b>	<b>1.5</b>	<b>129.5</b>	<b>40.0</b>	<b>1.13</b>	<b>19.6</b>	
<b>Red Oak Total</b>	<b>12.2</b>	<b>157</b>	<b>59</b>	<b>5,049</b>	<b>1,560</b>	<b>3.8</b>	<b>4</b>	<b>1.5</b>	<b>129.5</b>	<b>40.0</b>	<b>1.13</b>	<b>19.6</b>	

## Pine

Natural Lob		Stratum Total					Per Acre					Average Tree	
Sawtimber	DBH	Trees	Tons	Doyle BF	Cu. Ft. IB	BA	Trees	Tons	Doyle BF	Cu. Ft. IB	SL CFT/Ft	Height	
	15	8	4	520	110	0.3	0	0.1	13.3	2.8	0.84	16.5	
	18	6	7	971	193	0.3	0	0.2	24.9	4.9	1.07	32.5	
	20	9	16	2,281	471	0.5	0	0.4	58.5	12.1	1.09	48.5	

Thursday, December 4, 2014

# TIMBER VOLUME ESTIMATES

**Stratum:** Blevins 40  
**Acres:** 39  
**Plots:** 40.00  
**Cruiser:** JDThomas

**Cruise Date:** 12/04/2014  
**Cruise Type:** Point  
**Plot Size/BAF:** 20.00

## Pine

Natural Lob		Stratum Total						Per Acre				Average Tree	
Sawtimber	DBH	Trees	Tons	Doyle BF	Cu. Ft. IB	BA	Trees	Tons	Doyle BF	Cu. Ft. IB	SL CFT/Ft	Height	
	22	7	18	2,851	531	0.5	0	0.5	73.1	13.6	1.27	56.5	
	24	6	11	2,057	313	0.5	0	0.3	52.7	8.0	2.06	24.5	
	28	5	8	1,548	223	0.5	0	0.2	39.7	5.7	2.96	16.5	
Sawtimber Total	20.6	41	62	10,228	1,841	2.5	1	1.6	262.2	47.2	1.33	34.2	
Topwood	DBH	Trees	Tons	Doyle BF	Cu. Ft. IB	BA	Trees	Tons	Doyle BF	Cu. Ft. IB	SL CFT/Ft	Height	
Topwood Total	0.0	0	22	0	707	0.0	0	0.6	0.0	18.1	0.00	0.0	
Natural Lob Total	20.6	41	84	10,228	2,547	2.5	1	2.1	262.2	65.3	1.33	34.2	

Planted Lob		Stratum Total						Per Acre				Average Tree	
Sawtimber	DBH	Trees	Tons	Doyle BF	Cu. Ft. IB	BA	Trees	Tons	Doyle BF	Cu. Ft. IB	SL CFT/Ft	Height	
	12	397	187	17,585	5,665	8.0	10	4.8	450.9	145.3	0.44	32.5	
	13	434	227	21,720	6,940	10.3	11	5.8	556.9	178.0	0.50	32.1	
	14	264	178	19,103	5,524	7.3	7	4.6	489.8	141.6	0.55	38.0	
	15	119	87	10,082	2,735	3.8	3	2.2	258.5	70.1	0.63	36.2	
	16	91	80	10,002	2,508	3.3	2	2.0	256.5	64.3	0.73	38.0	
	17	25	25	3,255	810	1.0	1	0.6	83.5	20.8	0.74	44.5	
	18	6	5	631	157	0.3	0	0.1	16.2	4.0	0.87	32.5	
Sawtimber Total	13.4	1,336	789	82,378	24,339	33.8	34	20.2	2,112.3	624.1	0.53	34.4	
Chip-N-Saw	DBH	Trees	Tons	Doyle BF	Cu. Ft. IB	BA	Trees	Tons	Doyle BF	Cu. Ft. IB	SL CFT/Ft	Height	
	9	177	39	4,237	1,140	2.0	5	1.0	108.6	29.2	0.26	24.5	
	10	107	29	2,441	868	1.5	3	0.8	62.6	22.2	0.31	25.8	
	11	340	126	11,723	3,799	5.8	9	3.2	300.6	97.4	0.34	32.5	
Chip-N-Saw Total	10.3	624	195	18,401	5,807	9.3	16	5.0	471.8	148.9	0.32	29.1	
Pulpwood	DBH	Trees	Tons	Doyle BF	Cu. Ft. IB	BA	Trees	Tons	Doyle BF	Cu. Ft. IB	SL CFT/Ft	Height	
	6	99	11	0	320	0.5	3	0.3	0.0	8.2	0.00	34.6	

Thursday, December 4, 2014

# TIMBER VOLUME ESTIMATES

**Stratum:** Blevins 40  
**Acres:** 39  
**Plots:** 40.00  
**Cruiser:** JDThomas

**Cruise Date:** 12/04/2014  
**Cruise Type:** Point  
**Plot Size/BAF:** 20.00

## Pine

Planted Lob		Stratum Total					Per Acre					Average Tree	
Pulpwood	DBH	Trees	Tons	Doyle BF	Cu. Ft. IB	BA	Trees	Tons	Doyle BF	Cu. Ft. IB	SL CFT/Ft	Height	
	7	146	21	0	592	1.0	4	0.5	0.0	15.2	0.00	34.6	
	8	112	18	0	532	1.0	3	0.5	0.0	13.6	0.00	33.3	
	9	132	37	0	1,107	1.5	3	1.0	0.0	28.4	0.00	46.0	
	10	107	34	0	1,034	1.5	3	0.9	0.0	26.5	0.00	43.4	
	11	59	23	0	694	1.0	2	0.6	0.0	17.8	0.00	45.1	
Pulpwood Total	8.3	656	144	0	4,279	6.5	17	3.7	0.0	109.7	0.00	39.1	
Topwood	DBH	Trees	Tons	Doyle BF	Cu. Ft. IB	BA	Trees	Tons	Doyle BF	Cu. Ft. IB	SL CFT/Ft	Height	
Topwood Total	0.0	0	154	0	5,583	0.0	0	3.9	0.0	143.1	0.00	0.0	
Planted Lob Total	11.4	2,615	1,282	100,779	40,007	49.5	67	32.9	2,584.1	1,025.8	0.47	34.3	
Pine Total	11.5	2,656	1,366	111,006	42,555	52.0	68	35.0	2,846.3	1,091.1	0.49	34.3	

## Misc. Hardwood

Ash		Stratum Total					Per Acre					Average Tree	
Sawtimber	DBH	Trees	Tons	Doyle BF	Cu. Ft. IB	BA	Trees	Tons	Doyle BF	Cu. Ft. IB	SL CFT/Ft	Height	
	16	7	4	644	147	0.3	0	0.1	16.5	3.8	0.86	24.5	
	18	6	3	530	109	0.3	0	0.1	13.6	2.8	1.20	16.5	
Sawtimber Total	16.9	13	7	1,174	256	0.5	0	0.2	30.1	6.6	0.98	21.0	
Pulpwood	DBH	Trees	Tons	Doyle BF	Cu. Ft. IB	BA	Trees	Tons	Doyle BF	Cu. Ft. IB	SL CFT/Ft	Height	
	6	199	16	0	581	1.0	5	0.4	0.0	14.9	0.00	24.1	
	7	219	24	0	868	1.5	6	0.6	0.0	22.3	0.00	24.1	
	8	112	19	0	680	1.0	3	0.5	0.0	17.4	0.00	30.7	
	9	66	14	0	493	0.8	2	0.4	0.0	12.7	0.00	29.4	
	10	125	23	0	838	1.8	3	0.6	0.0	21.5	0.00	26.0	

Thursday, December 4, 2014



# TIMBER VOLUME ESTIMATES

**Stratum:** Blevins 40  
**Acres:** 39  
**Plots:** 40.00  
**Cruiser:** JDThomas

**Cruise Date:** 12/04/2014  
**Cruise Type:** Point  
**Plot Size/BAF:** 20.00

## Misc. Hardwood

Ash		<i>Stratum Total</i>						<i>Per Acre</i>				<i>Average Tree</i>	
Pulpwood	DBH	Trees	Tons	Doyle BF	Cu. Ft. IB	BA	Trees	Tons	Doyle BF	Cu. Ft. IB	SL CFT/Ft	Height	
	11	103	34	0	1,220	1.8	3	0.9	0.0	31.3	0.00	31.6	
	12	37	10	0	378	0.8	1	0.3	0.0	9.7	0.00	29.1	
	13	21	9	0	335	0.5	1	0.2	0.0	8.6	0.00	29.4	
	15	16	9	0	336	0.5	0	0.2	0.0	8.6	0.00	29.4	
	18	6	6	0	231	0.3	0	0.2	0.0	5.9	0.00	45.1	
<b>Pulpwood Total</b>	<b>8.5</b>	<b>904</b>	<b>165</b>	<b>0</b>	<b>5,960</b>	<b>9.8</b>	<b>23</b>	<b>4.2</b>	<b>0.0</b>	<b>152.8</b>	<b>0.00</b>	<b>27.0</b>	
<b>Ash Total</b>	<b>8.6</b>	<b>916</b>	<b>173</b>	<b>1,174</b>	<b>6,216</b>	<b>10.3</b>	<b>23</b>	<b>4.4</b>	<b>30.1</b>	<b>159.4</b>	<b>0.98</b>	<b>26.9</b>	

Elm		<i>Stratum Total</i>						<i>Per Acre</i>				<i>Average Tree</i>	
Pulpwood	DBH	Trees	Tons	Doyle BF	Cu. Ft. IB	BA	Trees	Tons	Doyle BF	Cu. Ft. IB	SL CFT/Ft	Height	
	6	50	0	0	0	0.3	1	0.0	0.0	0.0	0.00	18.0	
	7	36	4	0	122	0.3	1	0.1	0.0	3.1	0.00	18.9	
	8	140	14	0	390	1.3	4	0.4	0.0	10.0	0.00	19.2	
	9	44	7	0	187	0.5	1	0.2	0.0	4.8	0.00	26.3	
	10	36	9	0	268	0.5	1	0.2	0.0	6.9	0.00	21.5	
	11	44	15	0	414	0.8	1	0.4	0.0	10.6	0.00	22.4	
	12	37	15	0	414	0.8	1	0.4	0.0	10.6	0.00	22.4	
	13	21	5	0	146	0.5	1	0.1	0.0	3.7	0.00	21.1	
<b>Pulpwood Total</b>	<b>8.9</b>	<b>408</b>	<b>68</b>	<b>0</b>	<b>1,939</b>	<b>4.8</b>	<b>10</b>	<b>1.8</b>	<b>0.0</b>	<b>49.7</b>	<b>0.00</b>	<b>20.7</b>	
<b>Elm Total</b>	<b>8.9</b>	<b>408</b>	<b>68</b>	<b>0</b>	<b>1,939</b>	<b>4.8</b>	<b>10</b>	<b>1.8</b>	<b>0.0</b>	<b>49.7</b>	<b>0.00</b>	<b>20.7</b>	

Misc. Hardwood		<i>Stratum Total</i>						<i>Per Acre</i>				<i>Average Tree</i>	
Sawtimber	DBH	Trees	Tons	Doyle BF	Cu. Ft. IB	BA	Trees	Tons	Doyle BF	Cu. Ft. IB	SL CFT/Ft	Height	
	15	8	5	604	147	0.3	0	0.1	15.5	3.8	0.76	24.5	
	19	10	11	1,505	293	0.5	0	0.3	38.6	7.5	1.21	24.5	
	24	3	7	1,080	182	0.3	0	0.2	27.7	4.7	1.80	32.5	

Thursday, December 4, 2014

# TIMBER VOLUME ESTIMATES

**Stratum:** Blevins 40  
**Acres:** 39  
**Plots:** 40.00  
**Cruiser:** JDThomas

**Cruise Date:** 12/04/2014  
**Cruise Type:** Point  
**Plot Size/BAF:** 20.00

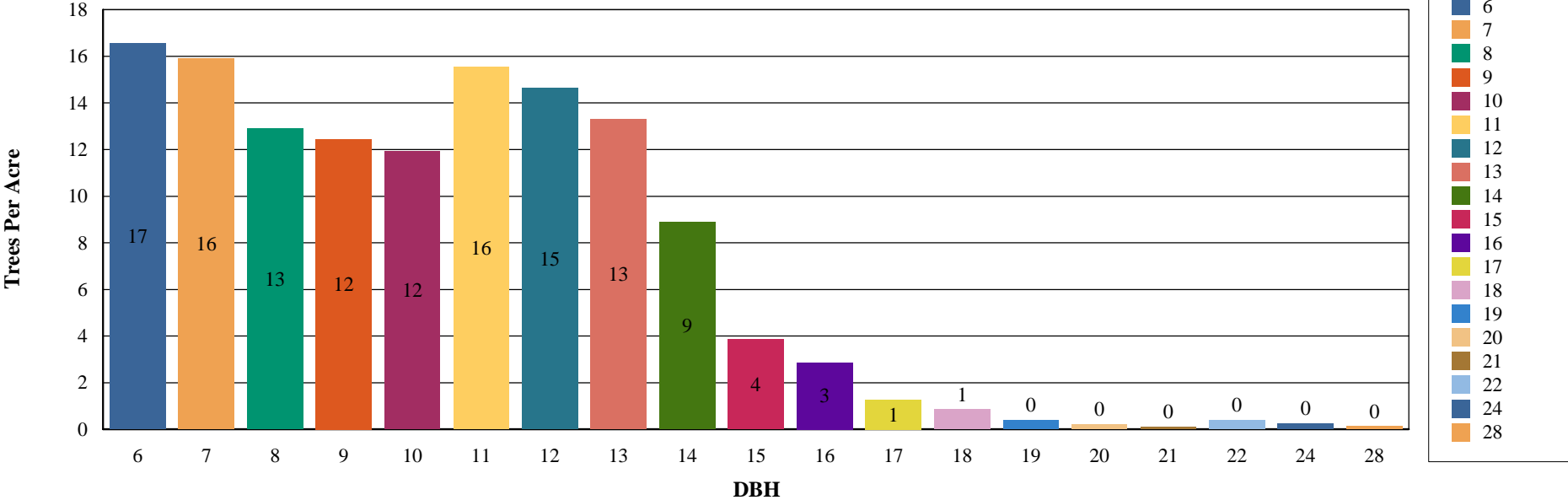
## Misc. Hardwood

Misc. Hardwood		Stratum Total					Per Acre					Average Tree	
Sawtimber Total		18.2	21	22	3,189	623	1.0	1	0.6	81.8	16.0	1.16	25.7
Pulpwood	DBH	Trees	Tons	Doyle BF	Cu. Ft. IB	BA	Trees	Tons	Doyle BF	Cu. Ft. IB	SL CFT/Ft	Height	
	6	248	11	0	331	1.3	6	0.3	0.0	8.5	0.00	22.0	
	7	146	0	0	0	1.0	4	0.0	0.0	0.0	0.00	17.0	
	8	56	4	0	122	0.5	1	0.1	0.0	3.1	0.00	18.4	
	9	66	14	0	411	0.8	2	0.4	0.0	10.5	0.00	22.4	
	10	54	12	0	343	0.8	1	0.3	0.0	8.8	0.00	27.0	
	11	30	10	0	310	0.5	1	0.3	0.0	8.0	0.00	26.8	
	12	62	24	0	712	1.3	2	0.6	0.0	18.3	0.00	29.2	
	13	11	8	0	242	0.3	0	0.2	0.0	6.2	0.00	50.4	
	14	18	9	0	268	0.5	0	0.2	0.0	6.9	0.00	21.5	
	19	5	6	0	191	0.3	0	0.2	0.0	4.9	0.00	34.6	
Pulpwood Total		8.1	695	98	0	2,931	7.0	18	2.5	0.0	75.2	0.00	22.4
Misc. Hardwood Total		8.4	716	121	3,189	3,554	8.0	18	3.1	81.8	91.1	1.16	22.5
Misc. Hardwood Total		8.6	2,041	361	4,363	11,709	23.0	52	9.3	111.9	300.2	1.10	24.1
<b>Stratum Total</b>		<b>10.3</b>	<b>5,162</b>	<b>1,915</b>	<b>121,691</b>	<b>59,581</b>	<b>83.5</b>	<b>132</b>	<b>49.1</b>	<b>3,120.3</b>	<b>1,527.7</b>	<b>0.51</b>	<b>29.9</b>

# TIMBER VOLUME ESTIMATES

## Trees Per Acre By Diameter Class

For Blevins 40



# TIMBER VOLUME ESTIMATES

## Tons Per Acre By Diameter Class

For Blevins 40

