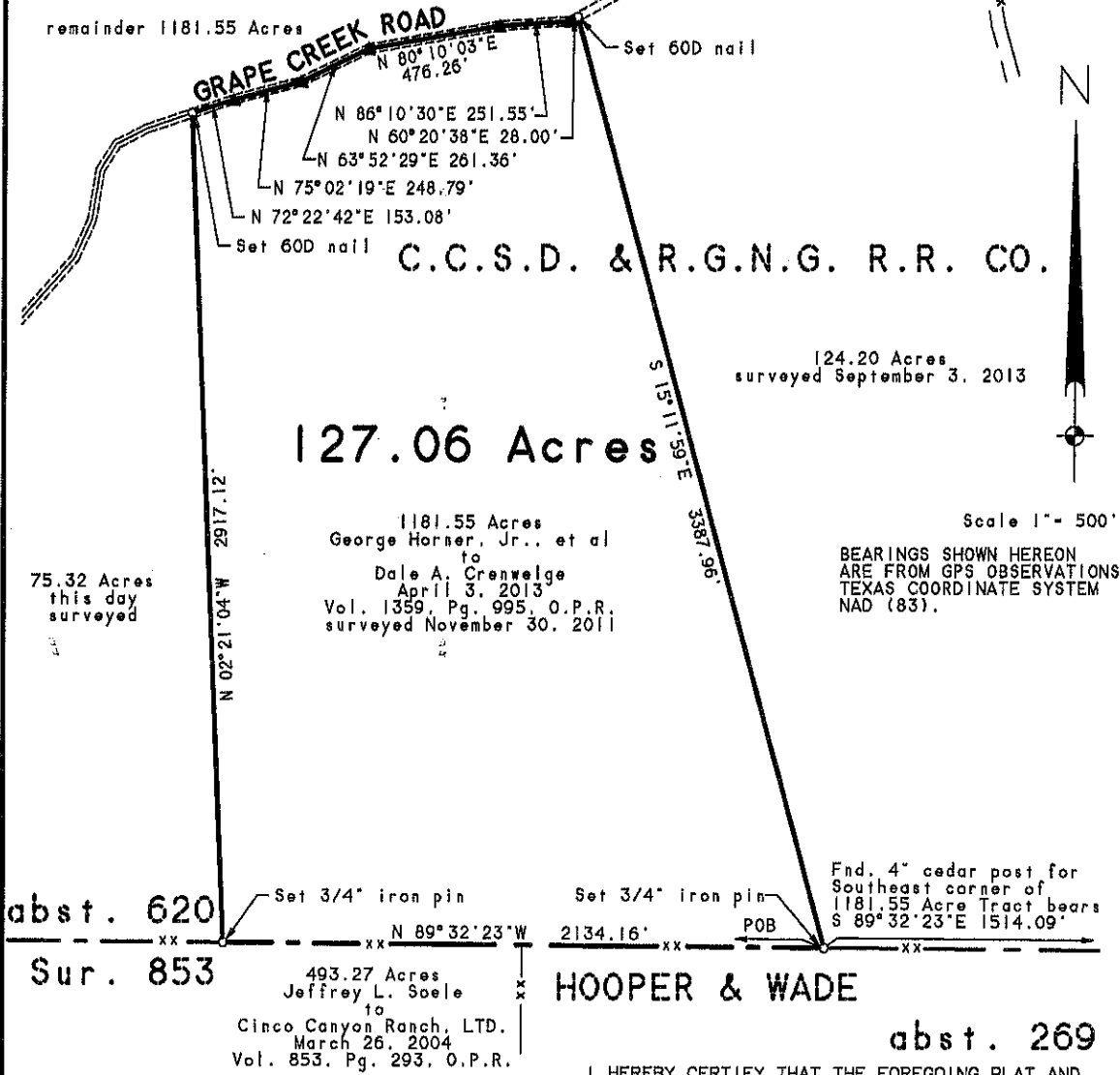


# KENDALL COUNTY, TEXAS

**LEGEND:**

- E — OVERHEAD ELECTRIC LINE
- xx — FENCE LINE
- - - ORIGINAL SURVEY LINE
- ▲ ANGLE POINT
- POB POINT OF BEGINNING
- O.P.R. OFFICIAL PUBLIC RECORDS  
KENDALL COUNTY, TEXAS



**127.06 Acres**

1181.55 Acres  
George Horner, Jr., et al  
to  
Dale A. Crenwelge  
April 3, 2013  
Vol. 1359, Pg. 995, O.P.R.  
surveyed November 30, 2011

75.32 Acres  
this day  
surveyed

124.20 Acres  
surveyed September 3, 2013

Scale 1" = 500'

BEARINGS SHOWN HEREON  
ARE FROM GPS OBSERVATIONS  
TEXAS COORDINATE SYSTEM  
NAD (83).

abst. 620  
Sur. 853

493.27 Acres  
Jeffrey L. Soele  
to  
Cinco Canyon Ranch, LTD.  
March 26, 2004  
Vol. 853, Pg. 293, O.P.R.

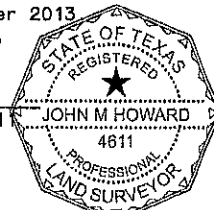
HOOPER & WADE

abst. 269

I HEREBY CERTIFY THAT THE FOREGOING PLAT AND ACCOMPANYING FIELD NOTE DESCRIPTION WERE PREPARED FROM AN ACTUAL SURVEY PERFORMED ON THE GROUND, UNDER MY SUPERVISION AND THAT THEY ARE TRUE AND CORRECT AND THERE ARE NO APPARENT DISCREPANCIES, CONFLICTS, SHORTAGES IN AREA OR BOUNDARY LINES, OR ANY ENCROACHMENTS OR OVERLAPPING OF IMPROVEMENTS TO THE BEST OF MY KNOWLEDGE AND BELIEF EXCEPT AS SHOWN THEREIN. HOWARD SURVEYING LLC ACCEPTS RESPONSIBILITY FOR THIS PLAT ONLY TO THE ORIGINAL CLIENTS FOR WHICH IT WAS PREPARED.

THIS THE 25th DAY OF September 2013

*John M Howard*  
JOHN HOWARD, R.P.L.S. No. 461  
HOWARD SURVEYING, LLC  
402 STATE HWY 173 SOUTH  
HONDO, TEXAS 78861  
(830) 426-4776



PREPARED FOR: Dale Crenwelge  
SURVEYED ON THE GROUND: September 17, 2013

**A Plat of a 127.06 Acre Tract of land  
situated about 25.7 miles N 23° W of  
Boerne in Kendall Counties, Texas.**

FIELD NOTES TO DESCRIBE

A 127.06 Acre Tract of land being situated about 25.7 miles N 23° W of Boerne in Kendall County, Texas, out of Survey No. 145, Abstract No. 620, C. C. S. D. & R. G. N. G. R.R. Co., original grantee, and being out of an 1181.55 Acre Tract (surveyed November 30, 2011) conveyed from George Horner, Jr., et al to Dale A. Crenwelge by deed dated April 3, 2013 and recorded in Volume 1359, Page 995 of the Official Public Records of Kendall County, Texas, and being more particularly described as follows:

BEGINNING: At a 3/4" iron pin previously set in the North line of Survey No. 853 and a 493.27 Acre Tract (Volume 853, Page 293, Official Public Records) and the South line of Survey No. 145 and of said 1181.55 Acre Tract for the Southwest corner of a 124.20 Acre Tract (surveyed September 3, 2013) and the Southeast corner of this tract from which a 4" cedar post found for the Southeast corner of said 1181.55 Acre Tract bears S 89° 32' 23" E 1514.09 feet;

THENCE: N 89° 32' 23" W 2134.16 feet with fence and the North line of Survey No. 853 and of said 493.27 Acre Tract and the South line of Survey No. 145 and of said 1181.55 Acre Tract to a 3/4" iron pin set for the Southeast corner of a 75.32 Acre Tract (this day surveyed) and the Southwest corner of this tract;

THENCE: N 02° 21' 04" W 2917.12 feet into said 1181.55 Acre Tract to a 60D nail set in pavement for the Northeast corner of said 75.32 Acre Tract and the Northwest corner of this tract;

THENCE: With the center of Grape Creek Road and the North line of this tract as follows:


N 72° 22' 42" E 153.08 feet to an angle point;  
N 75° 02' 19" E 248.79 feet to an angle point;  
N 63° 52' 29" E 261.36 feet to an angle point;  
N 80° 10' 03" E 476.26 feet to an angle point;  
N 86° 10' 30" E 251.55 feet to an angle point;  
N 60° 20' 38" E 28.00 feet to a 60D nail previously set in pavement for the Northwest corner of said 124.20 Acre Tract and the Northeast corner of this tract;

THENCE: S 15° 11' 59" E 3387.96 feet to the POINT OF BEGINNING.

Bearings shown herein are from GPS observations Texas Coordinate System NAD (83);

I hereby certify that the foregoing field note description and accompanying plat were prepared from an actual survey performed on the ground, under my supervision and that to the best of my belief and knowledge they are true and correct.

This the 25<sup>th</sup> day of September, 2013.



John Howard, R.P.L.S. No. 4611  
Howard Surveying, LLC  
402 State Highway 173 South  
Hondo, Texas 78861  
(830) 426-4776