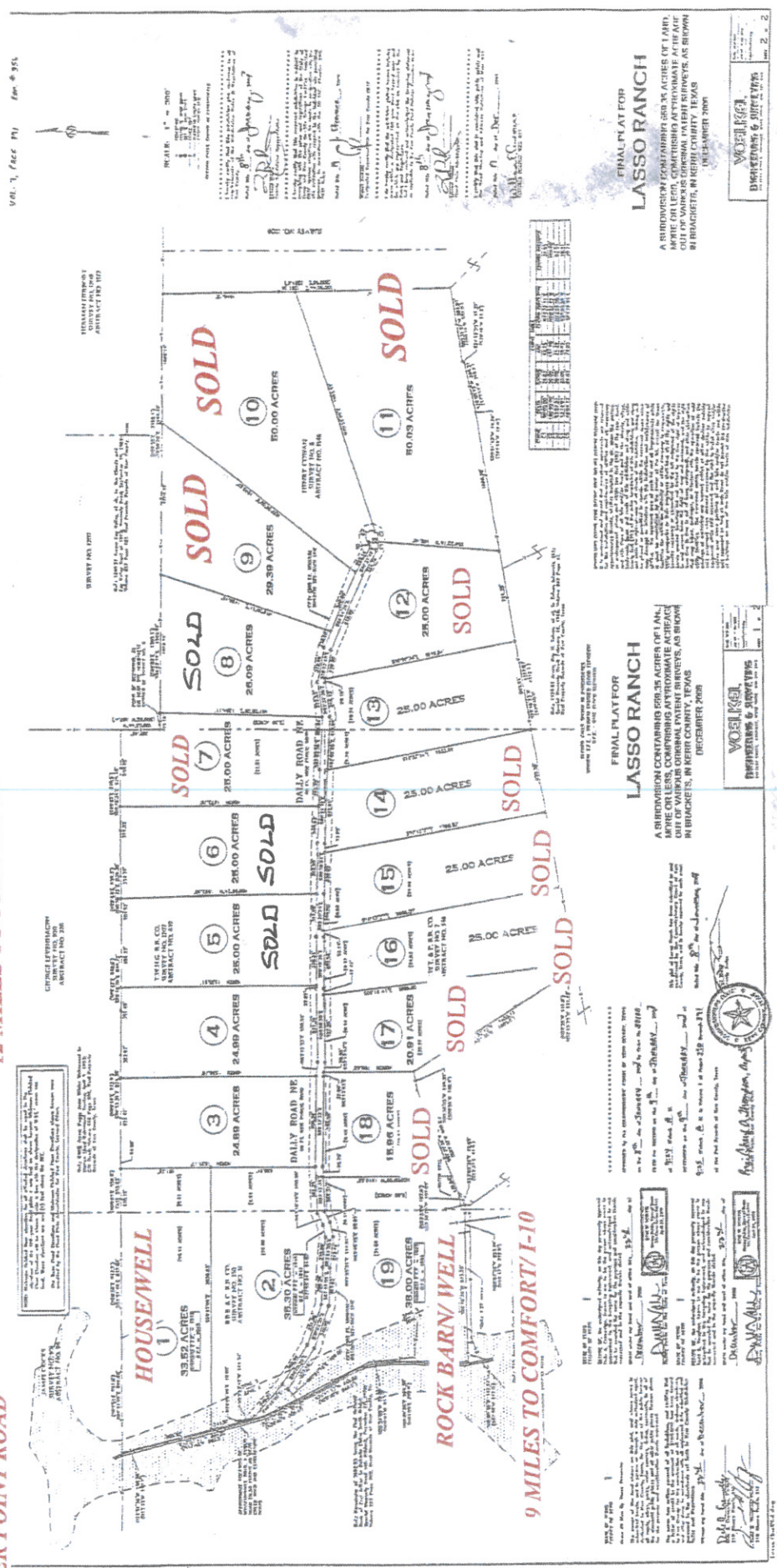


- Tract 1....33.52 acres with 1924 sq ft Ranch Home
Well, septic, horse barn, Private gate entrance
270* views.
- Tract 2....35.30 acres with pasture, distance views
- Tract 3....24.89 acres, Trees/views
- Tract 4....24.99 acres/trees
- Tract 5....25 acres/trees **SOLD**
- Tract 6....25 acres/trees **SOLD**
- Tract 8.....26.09 acres/trees **SOLD**
- Tract 9.....29.39 acres/trees **SOLD**
- Tract 13.....25 acres /trees
- Tract 19.....38 acres with Rock
Barn, Well, Pens with
Pond, Twin Silos, Farm
House, Private Entrance

12 MILES TO FREDERICKSBURG

UNDER GROUND UTILITIES, AG-EXEMPT, PROTECTIVE COVENANTS, NO CEDAR



FINAL PLAT FOR LASSO RANCH
A SUBDIVISION OF 19 TRACTS OF APPROXIMATELY 25 ACRES OF LAND, MORE OR LESS, COMPRISING APPROXIMATELY 500 ACRES OF LAND, OUT OF VARIOUS ORIGINAL PATENT SURVEYS, AS SHOWN IN BRACKETETS, IN BERTH COUNTY, TEXAS
DECEMBER 2008

FINAL PLAT FOR LASSO RANCH
A SUBDIVISION OF 19 TRACTS OF APPROXIMATELY 25 ACRES OF LAND, MORE OR LESS, COMPRISING APPROXIMATELY 500 ACRES OF LAND, OUT OF VARIOUS ORIGINAL PATENT SURVEYS, AS SHOWN IN BRACKETETS, IN BERTH COUNTY, TEXAS
DECEMBER 2008

FINAL PLAT FOR LASSO RANCH
A SUBDIVISION OF 19 TRACTS OF APPROXIMATELY 25 ACRES OF LAND, MORE OR LESS, COMPRISING APPROXIMATELY 500 ACRES OF LAND, OUT OF VARIOUS ORIGINAL PATENT SURVEYS, AS SHOWN IN BRACKETETS, IN BERTH COUNTY, TEXAS
DECEMBER 2008

FINAL PLAT FOR LASSO RANCH
A SUBDIVISION OF 19 TRACTS OF APPROXIMATELY 25 ACRES OF LAND, MORE OR LESS, COMPRISING APPROXIMATELY 500 ACRES OF LAND, OUT OF VARIOUS ORIGINAL PATENT SURVEYS, AS SHOWN IN BRACKETETS, IN BERTH COUNTY, TEXAS
DECEMBER 2008

FINAL PLAT FOR LASSO RANCH
A SUBDIVISION OF 19 TRACTS OF APPROXIMATELY 25 ACRES OF LAND, MORE OR LESS, COMPRISING APPROXIMATELY 500 ACRES OF LAND, OUT OF VARIOUS ORIGINAL PATENT SURVEYS, AS SHOWN IN BRACKETETS, IN BERTH COUNTY, TEXAS
DECEMBER 2008