


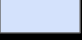
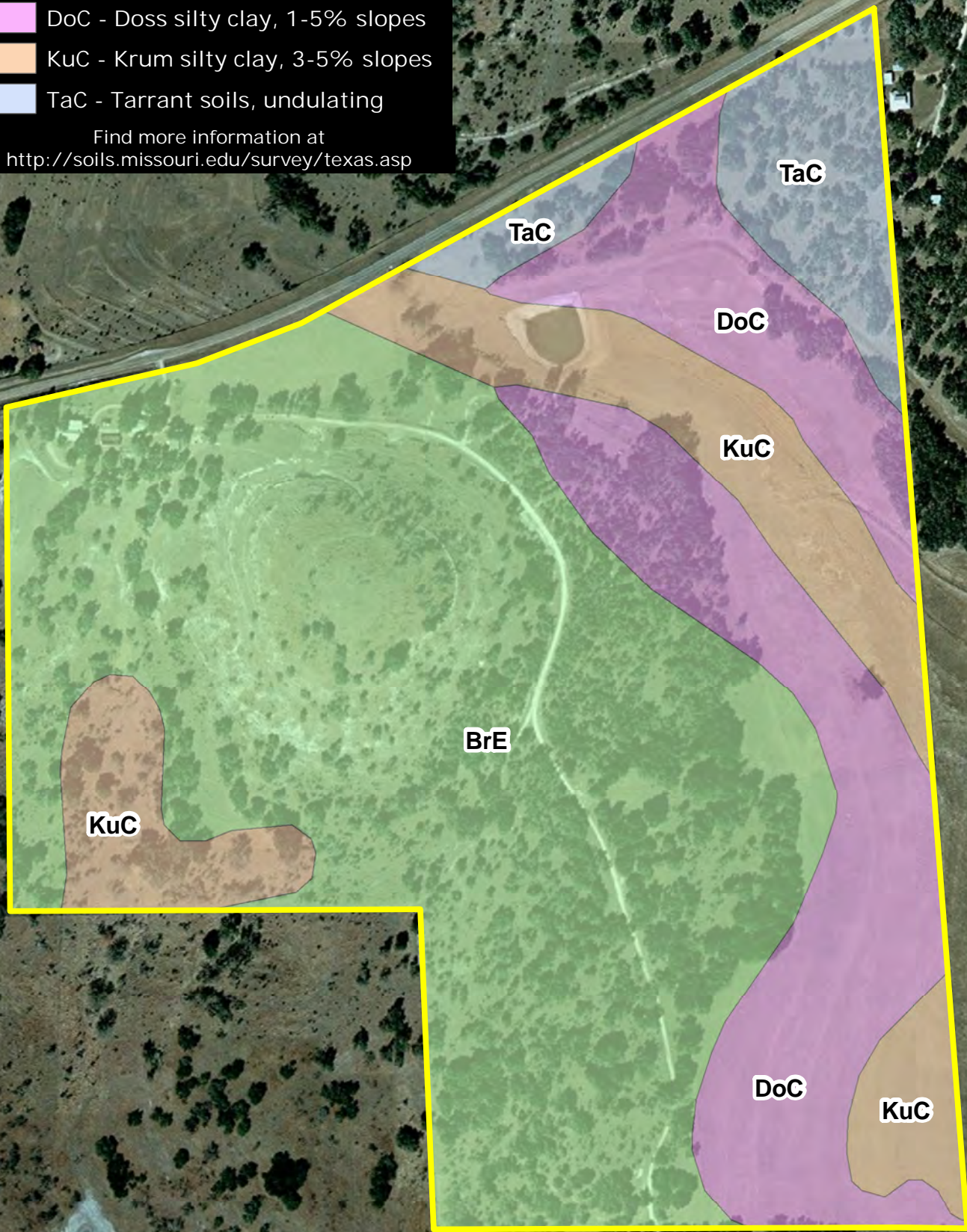


Soils

-  BrE - Brackett soils, hilly
-  DoC - Doss silty clay, 1-5% slopes
-  KuC - Krum silty clay, 3-5% slopes
-  TaC - Tarrant soils, undulating

Find more information at
<http://soils.missouri.edu/survey/texas.asp>



1 inch = 0.08 miles
0 170 340 Feet

www.landtx.com
ACCURACY OF MAPS NOT GUARANTEED
© 2012 Culver / LANDTX INC. All Rights Reserved