

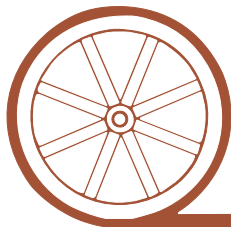
LAND FOR SALE



Pheasant Run Acreage Keith County, NE

- Location:** 1/2 mile north of Ogallala on Hwy 26 and then 1 mile east on Hwy 61.
- Legal Description:** Lots 1 & 3 Pheasant Run Estates in SW1/4 Section 20-T14N-R38W of the 6th P.M. Keith County, NE.
- Acres & Taxes:** 17.2 tax assessed acres. 2009 Real Estate Taxes payable in 2010 are \$2,528.50.
- House & Out Buildings:** This home is a 4 bedroom, 2 1/2 bath, 2,248 sq ft ranch style home with a 1,332 sq ft basement and a 2 car (672 sq ft) attached garage. There is a 2nd detached 960 sq ft garage with office and a 24' X30' RV carport.
- Price:** \$280,000
- Comments:** This home is in excellent condition with many new upgrades, i.e. new flooring, new roof, 100% reverse electric heat pump. The kitchen is newly remodeled with new Hickory cabinets, sink, counter tops, Maple flooring and wall tile. There is a large living room with fireplace. The yard has a nice mix of mature Pine and Deciduous trees with 2 apple trees, a cherry tree and a plum tree. There is a large fish pond that is kept full of water by an irrigation well.
- Contact:** Mike Polk, mike@agriaffiliates.com or 308.539.4446
Duane McClain, Loren Johnson, Bruce Dodson, Jerry Weaver

Offered Exclusively By:



AGRI AFFILIATES, INC.

... Providing Farm - Ranch Real Estate Services. ...

NORTH PLATTE OFFICE

P.O. Box 1166

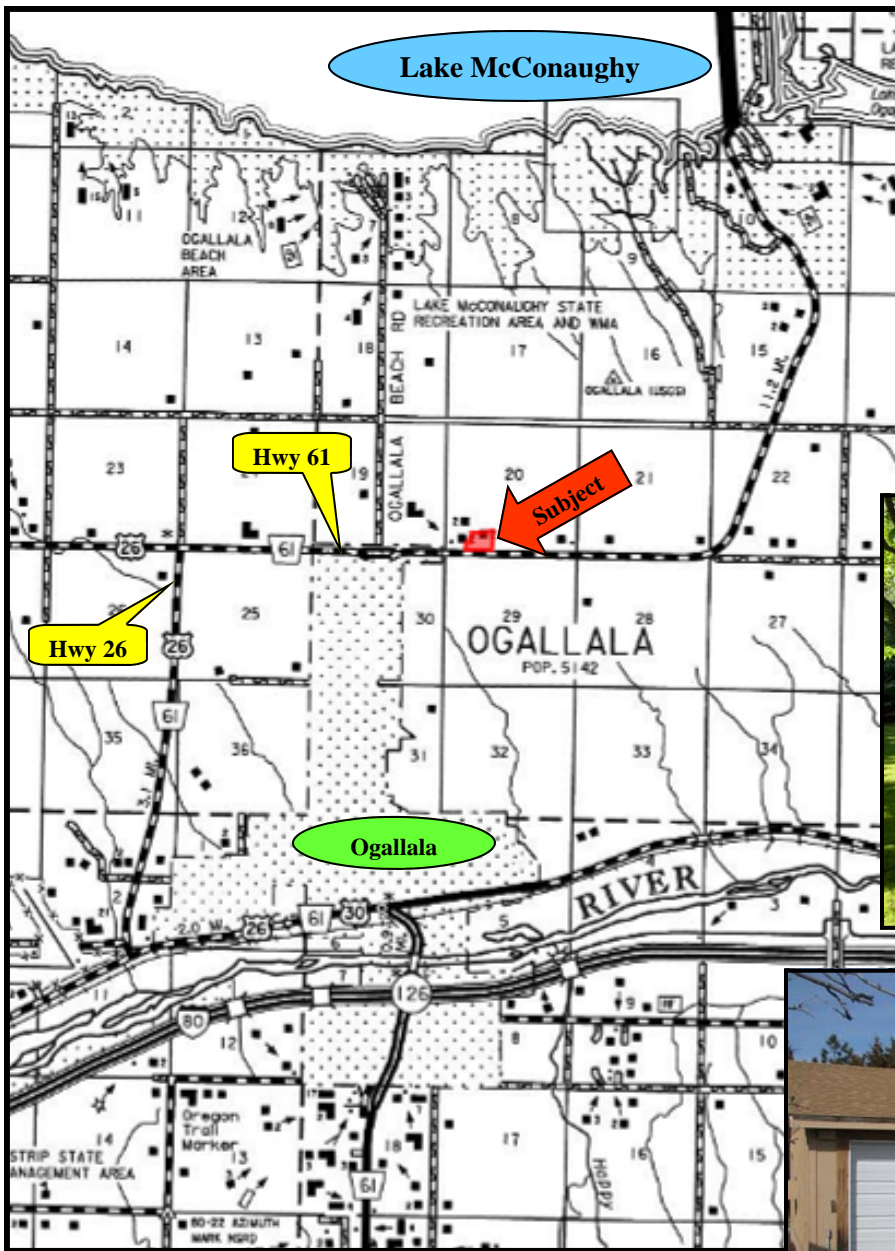
I-80 & US Hwy 83

North Platte, NE 69103

www.agriaffiliates.com

(308) 534-9240

Information contained herein was obtained from sources deemed reliable. We have no reason to doubt the accuracy, but we do not guarantee it. Prospective Buyers should verify all information, including items of income and expense. All maps provided by Agri Affiliates, Inc. are approximations only, to be used as a general guideline, and not intended as survey accurate.



Lake McConaughy

Hwy 61

Subject

Hwy 26

Ogallala

OGALLALA
POP. 5142

RIVER



View from road



Typical Summer Yard Scene



Unattached Garage



Fish pond in front of house



Office in unattached garage & RV carport in back

Interior Details



Newly Remodeled Kitchen



Master Bedroom



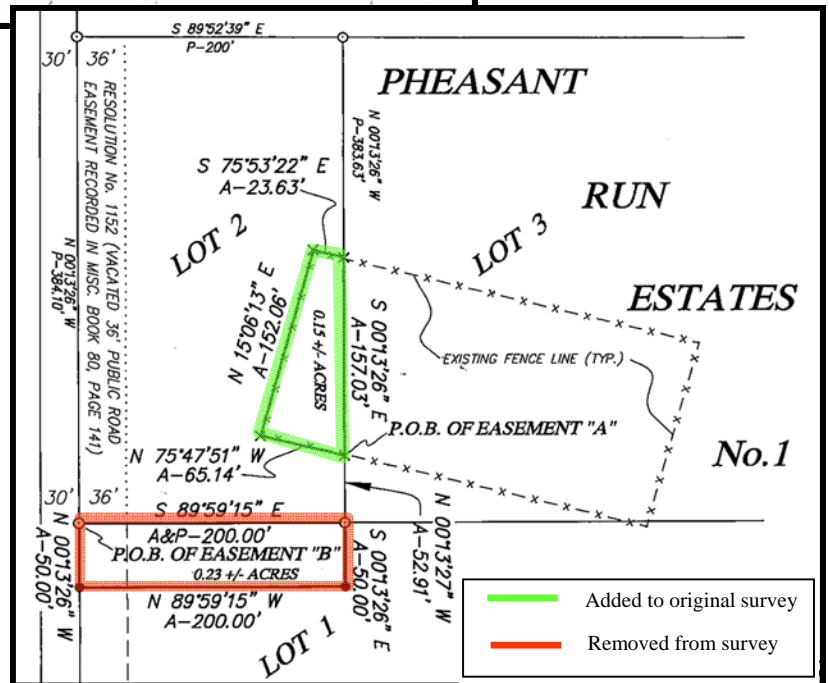
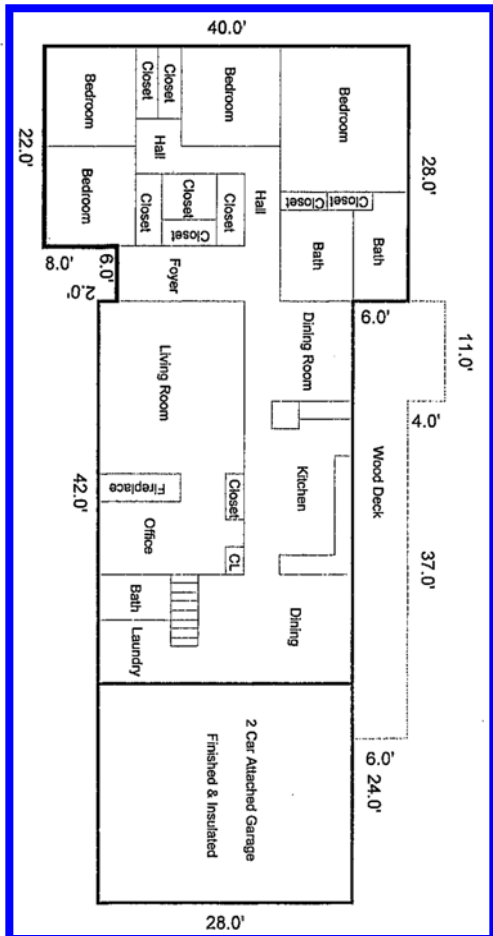
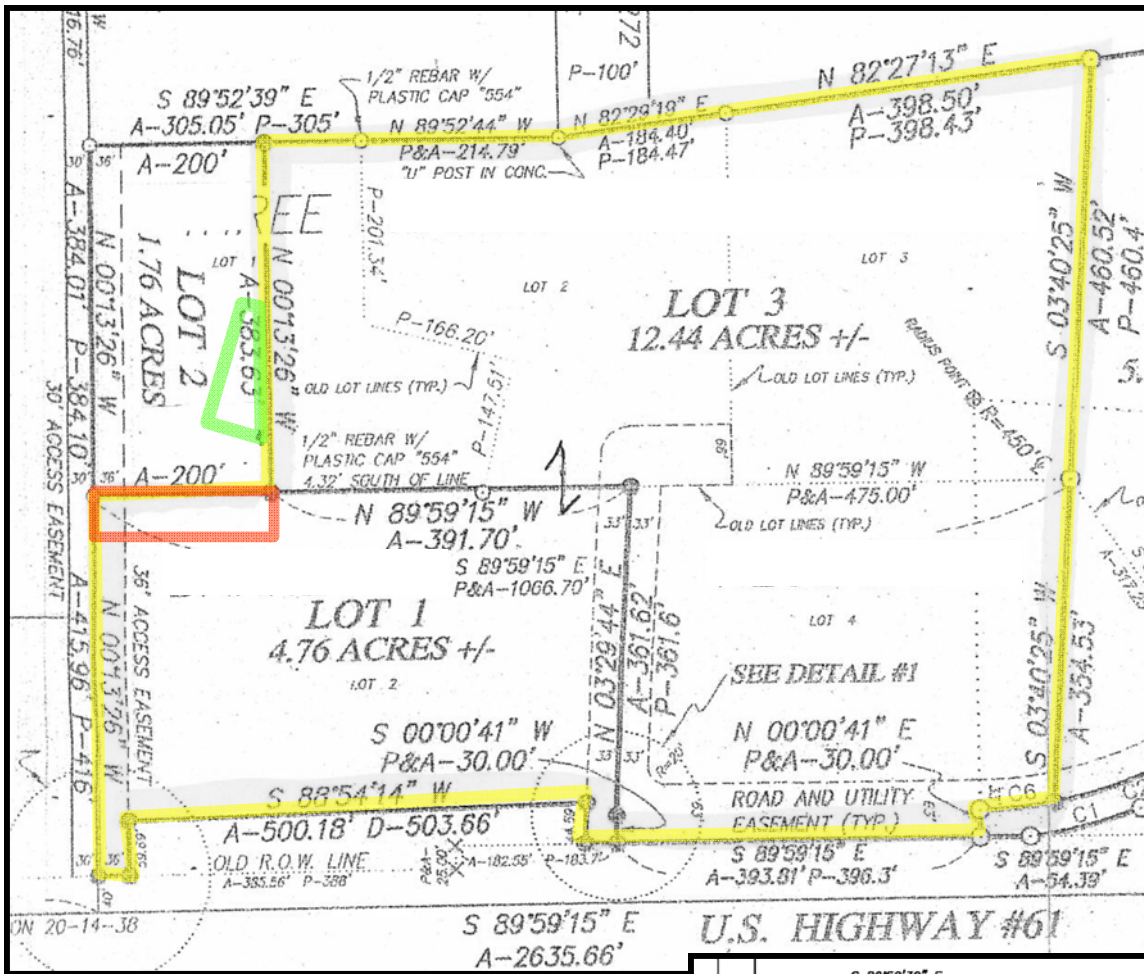
Bathroom



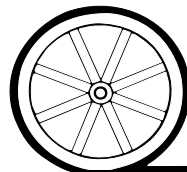
Living Room



Office



All maps provided by Agri Affiliates, Inc. are approximations only, to be used as a general guideline, and not intended as survey accurate.



AGRI AFFILIATES, INC.

... Providing Farm - Ranch Real Estate Services ...