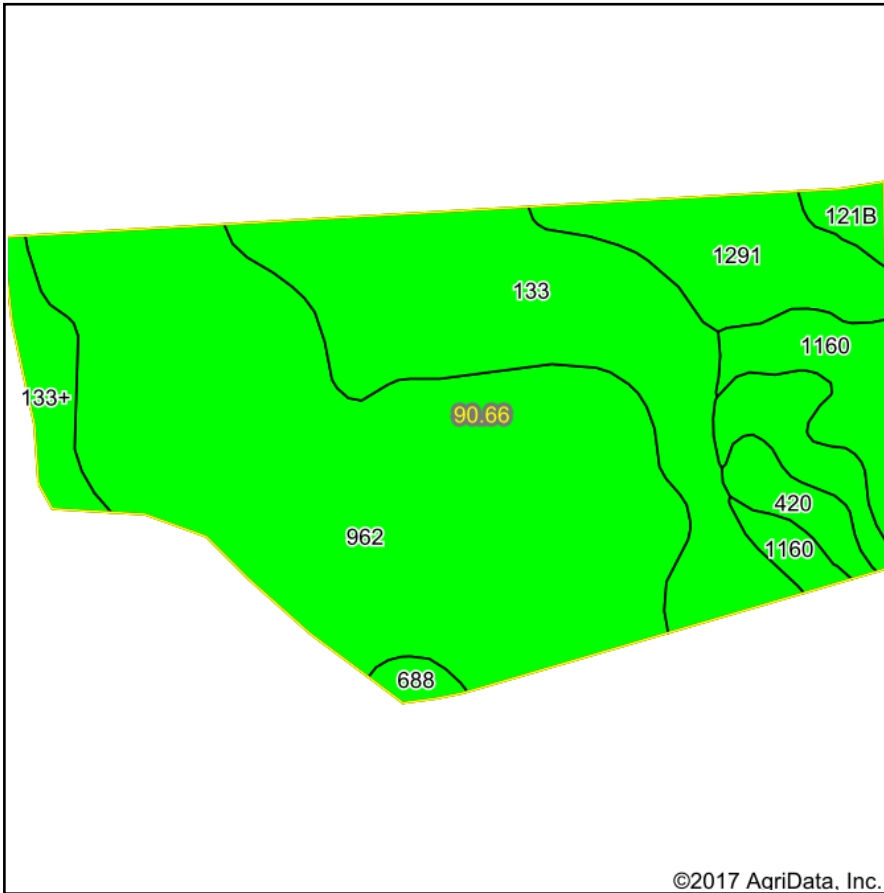
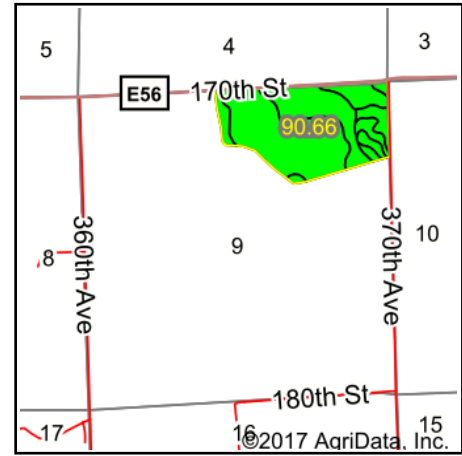


Soils Map



Soils data provided by USDA and NRCS.

©2017 AgriData, Inc.



State: **Iowa**
 County: **Clinton**
 Location: **9-82N-5E**
 Township: **Center**
 Acres: **90.66**
 Date: **9/6/2017**



Maps Provided By:



© AgriData, Inc. 2017

www.AgriDataInc.com



Area Symbol: IA045, Soil Area Version: 22

| Cod e | Soil Description | Acres | Percent of field | CSR2 Legend | Non-Irr Class *c | *j Corn | *j Alfalfa | *j Soybeans | *j Bluegrass | *j Tall Grasses | CSR2** | CS R | Cor n | Oat s | Soybeans | NCCPI Overall |
|-------|---|-------|------------------|-------------|------------------|---------|------------|-------------|--------------|-----------------|--------|------|-------|-------|----------|---------------|
| 962 | Elvira silty clay loam, 0 to 2 percent slopes | 46.33 | 51.1% | | llw | 198.4 | 4.2 | 57.5 | 3.6 | 6 | 83 | 60 | | | | 84 |
| 133 | Colo silty clay loam, 0 to 2 percent slopes, occasionally flooded | 20.77 | 22.9% | | llw | 204.8 | 4.3 | 59.4 | 3.7 | 6.1 | 78 | 85 | | | | 95 |
| 1291 | Atterberry silt loam, benches, 1 to 3 percent slopes | 10.73 | 11.8% | | lle | 224 | 5.8 | 65 | 4 | 6.7 | 85 | 80 | | | | 98 |
| 1160 | Walford silt loam, benches, 0 to 1 percent slopes | 5.55 | 6.1% | | lllw | 216 | 4.5 | 62.6 | 3.9 | 6.5 | 85 | 65 | | | | 89 |
| 133+ | Colo silt loam, 0 to 2 percent slopes, occasionally flooded, overwash | 3.23 | 3.6% | | llw | 204.8 | 4.3 | 59.4 | 3.7 | 6.1 | 78 | 80 | | | | 94 |
| 420 | Tama silt loam, terrace, driftless, 0 to 2 percent slopes | 2.13 | 2.3% | | l | 240 | 6.7 | 69.6 | 4.3 | 7.2 | 100 | 100 | 8 | 4 | 2 | 95 |
| 121B | Tama silt loam, driftless, 2 to 6 percent slopes | 1.15 | 1.3% | | lle | | | | | | 95 | | | | | 94 |
| 688 | Koszta silt loam, 0 to 2 percent slopes | 0.77 | 0.8% | | lw | 217.6 | 5.7 | 63.1 | 3.9 | 6.5 | 90 | 85 | | | | 99 |

| | | | | | | | | | | | |
|-------------------------|--------------|------------|-------------|------------|------------|-------------|-----------|------------|------------|-----------|-------------|
| Weighted Average | 202.8 | 4.5 | 58.8 | 3.7 | 6.1 | 82.6 | *- | 0.2 | 0.1 | *- | 89.4 |
|-------------------------|--------------|------------|-------------|------------|------------|-------------|-----------|------------|------------|-----------|-------------|

**IA has updated the CSR values for each county to CSR2.

*- CSR weighted average cannot be calculated on the current soils data, use prior data version for csr values.

*i Yield data provided by the ISPAID Database version 8.1 developed by IA State University.

*c: Using Capabilities Class Dominant Condition Aggregation Method

Soils data provided by USDA and NRCS.