

Hampshire Parcel Viewer

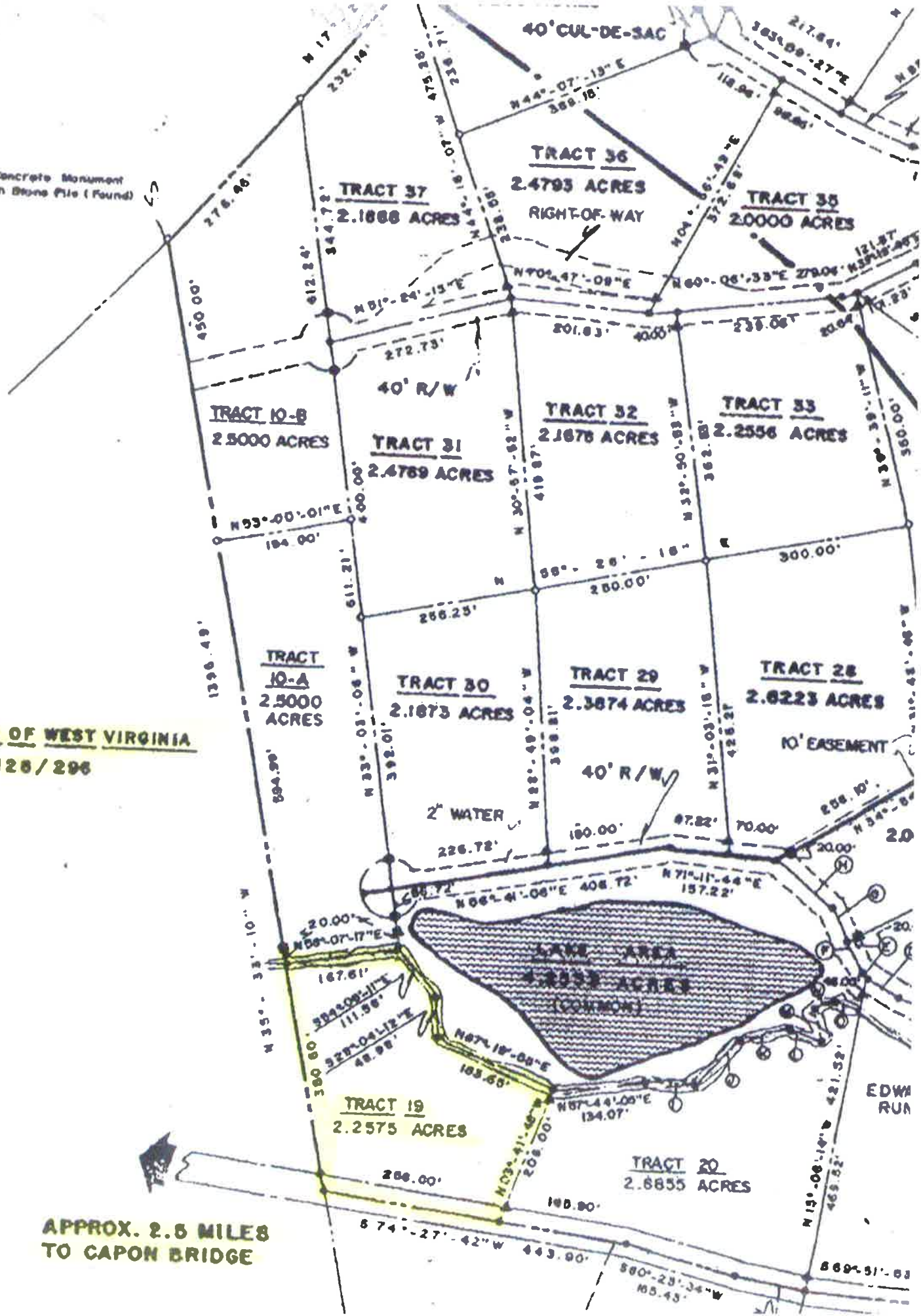


200ft
-78.426 39.331 Degrees

Concrete Monument
in Stone Pile (Found)

STATE OF WEST VIRGINIA
126 / 296

APPROX. 2.5 MILES
TO CAPON BRIDGE



EDWARDS

Run

Wildlife

Management

ALBA

500 AC

for

Public

Hunt, Hike
FISH

lot
A

lot
19



FOOT
- 81' WIDE

PRIVATE
LAKE

BASS
SUNFISH
CATFISH

Common RIVER

EDWARDS
Run

Stocked with Trout
By State of WV

COLD Stream ROAD

1/4 to River Access

Private
Access
to
River

Canaan River

River