



NAIAvant

For Sale

±30 AC
Land

Garners Ferry Road

Eastover, South Carolina

CONTACT EXCLUSIVE BROKERS FOR
MORE INFORMATION:

Tombo Milliken

o: +1 803 744 9852

c: +1 803 206 8384

tombo.milliken@naiavant.com

Tom Milliken

o: +1 803 744 9837

c: +1 803 331 6999

tmilliken@naiavant.com

THE INFORMATION CONTAINED HEREIN HAS BEEN GIVEN TO US BY THE OWNER OF THE PROPERTY OR OTHER SOURCES WE DEEM RELIABLE. WE HAVE NO REASON TO DOUBT ITS ACCURACY, BUT WE DO NOT GUARANTEE IT. ALL INFORMATION SHOULD BE VERIFIED PRIOR TO PURCHASE OR LEASE.

807 Gervais Street, Suite 301
Columbia, South Carolina 29201
+1 803.254.0100

www.naiavant.com

Garners Ferry Road

Eastover, South Carolina

For Sale

±30 AC
Land

Property Features

- ±29.68 acres for sale on Garners Ferry Road in Eastover, South Carolina (Richland County)
- ±691 feet of Garners Ferry Road paved frontage
- ±1,350 feet of Wilson McCoy Road frontage - Wilson McCoy Road is on the “dirt road list to be paved” under the “Richland County Penny”
- Mixture of Pine and Hardwood
- One existing curb cut on Garners Ferry Road
- 3/4 mile from the new Wateree Heritage Trust WMA (Goodwill Plantation/ Cooks Mountain)
- 1/2 mile from the new Wateree Shooting Range (skeet, trap, sporting clays)
- Zoned RU - Rural, Richland County
- Asking price: \$88,892 or \$2,995 per acre

Garners Ferry Road

Eastover, South Carolina

For Sale

±30 AC

Land



Garners Ferry Road

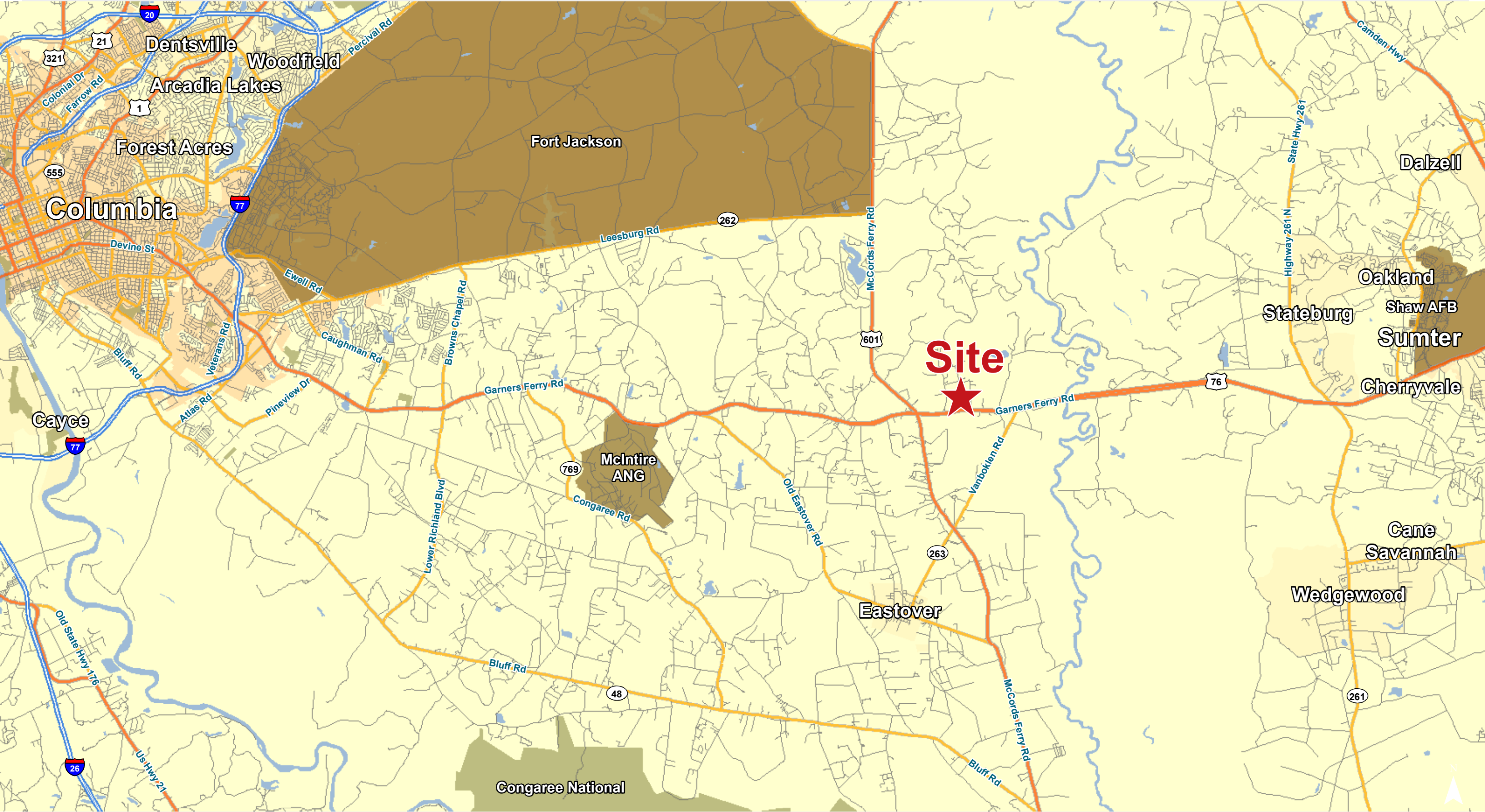
Eastover, South Carolina

For Sale

±30 AC

Land





Map Updated: Tuesday, May 24, 2016. This information submitted is not guaranteed. Although obtained from reliable sources, all information should be confirmed prior to use or reliance upon the information. This document may not be reproduced in whole or in part without the express written consent of NAI Avant.



Map Updated: Friday, April 15, 2016. This information submitted is not guaranteed. Although obtained from reliable sources, all information should be confirmed prior to use or reliance upon the information. This document may not be reproduced in whole or in part without the express written consent of NAI Avant.



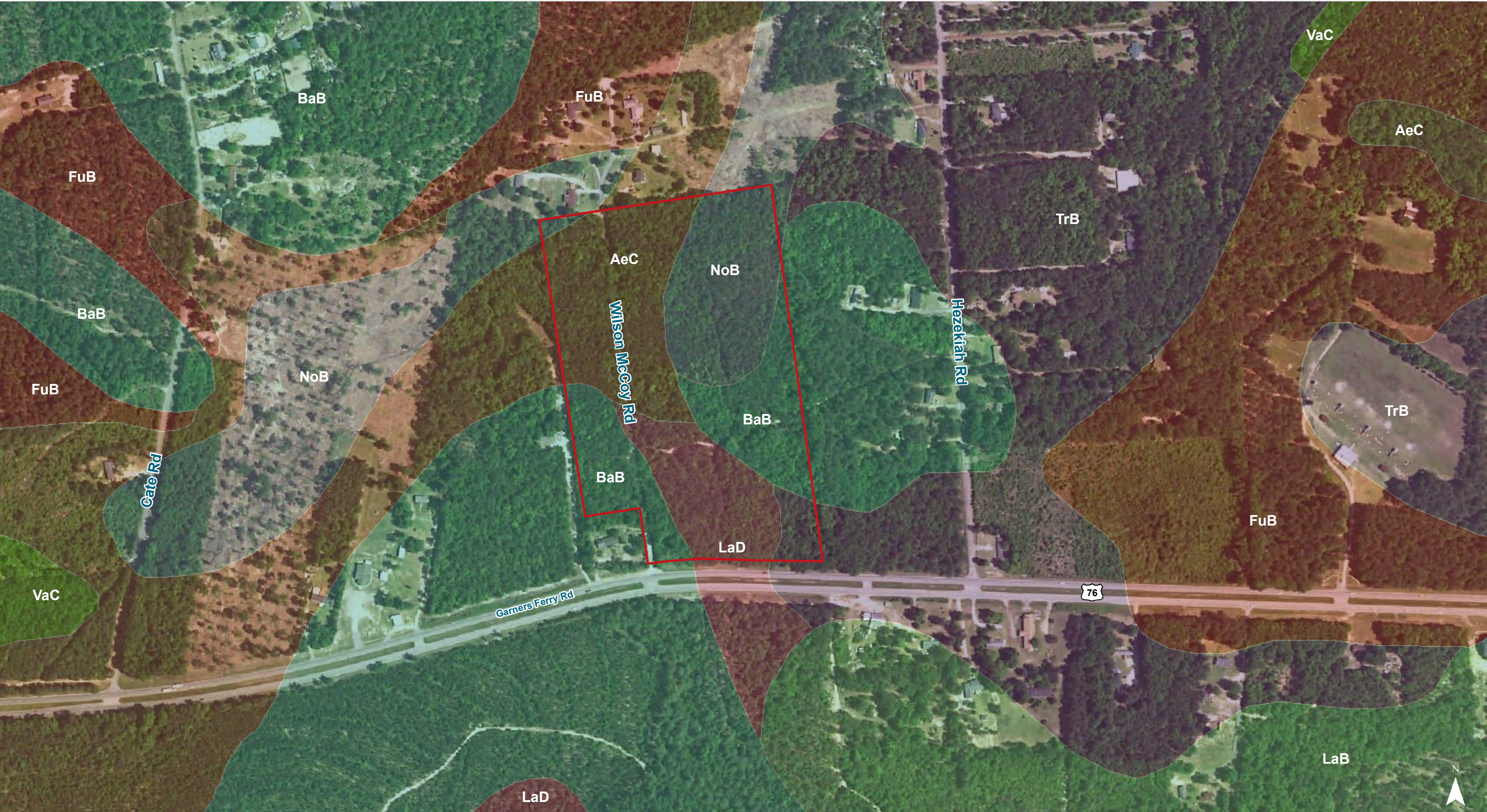
Map Updated: Friday, April 15, 2016. This information submitted is not guaranteed. Although obtained from reliable sources, all information should be confirmed prior to use or reliance upon the information. This document may not be reproduced in whole or in part without the express written consent of NAI Avant.



Map Updated: Friday, April 15, 2016. This information submitted is not guaranteed. Although obtained from reliable sources, all information should be confirmed prior to use or reliance upon the information. This document may not be reproduced in whole or in part without the express written consent of NAI Avant.



Map Updated: Friday, April 15, 2016. This information submitted is not guaranteed. Although obtained from reliable sources, all information should be confirmed prior to use or reliance upon the information. This document may not be reproduced in whole or in part without the express written consent of NAI Avant.



Map Updated: Friday, April 15, 2016. This information submitted is not guaranteed. Although obtained from reliable sources, all information should be confirmed prior to use or reliance upon the information. This document may not be reproduced in whole or in part without the express written consent of NAI Avant.

Map Unit Description (Brief, Generated)

Richland County, South Carolina

[Minor map unit components are excluded from this report]

AeC - Ailey loamy sand, 2 to 10 percent slopes

Ailey (100%)

The Ailey component makes up 100 percent of the map unit. Slopes are 2 to 10 percent. This component is on marine terraces on sandhills. The parent material consists of sandy and loamy marine deposits. Depth to a root restrictive layer is greater than 60 inches. The natural drainage class is well drained. Water movement in the most restrictive layer is moderately low. Available water to a depth of 60 inches is low. Shrink-swell potential is low. This soil is not flooded. It is not ponded. There is no zone of water saturation within a depth of 72 inches. Organic matter content in the surface horizon is about 1 percent. Nonirrigated land capability classification is 4s. This soil does not meet hydric criteria.

BaB - Blanton sand, 0 to 6 percent slopes

Blanton (100%)

The Blanton component makes up 100 percent of the map unit. Slopes are 0 to 6 percent. This component is on marine terraces on sandhills. The parent material consists of sandy and loamy marine deposits. Depth to a root restrictive layer is greater than 60 inches. The natural drainage class is moderately well drained. Water movement in the most restrictive layer is moderately high. Available water to a depth of 60 inches is low. Shrink-swell potential is low. This soil is not flooded. It is not ponded. A seasonal zone of water saturation is at 48 inches during January, February, March, December. Organic matter content in the surface horizon is about 1 percent. Nonirrigated land capability classification is 3s. This soil does not meet hydric criteria.

LaB - Lakeland sand, 2 to 6 percent slopes

Lakeland (100%)

The Lakeland component makes up 100 percent of the map unit. Slopes are 2 to 6 percent. This component is on marine terraces on sandhills. The parent material consists of sandy marine deposits. Depth to a root restrictive layer is greater than 60 inches. The natural drainage class is excessively drained. Water movement in the most restrictive layer is high. Available water to a depth of 60 inches is low. Shrink-swell potential is low. This soil is not flooded. It is not ponded. There is no zone of water saturation within a depth of 72 inches. Organic matter content in the surface horizon is about 1 percent. Nonirrigated land capability classification is 4s. This soil does not meet hydric criteria.

NoB - Norfolk loamy sand, 2 to 6 percent slopes

Norfolk (90%)

The Norfolk component makes up 90 percent of the map unit. Slopes are 2 to 6 percent. This component is on marine terraces on coastal plains. The parent material consists of loamy marine deposits. Depth to a root restrictive layer is greater than 60 inches. The natural drainage class is well drained. Water movement in the most restrictive layer is moderately high. Available water to a depth of 60 inches is moderate. Shrink-swell potential is low. This soil is not flooded. It is not ponded. A seasonal zone of water saturation is at 48 inches during January, February, March. Organic matter content in the surface horizon is about 1 percent. Nonirrigated land capability classification is 2e. This soil does not meet hydric criteria.

Richland County, South Carolina

[Minor map unit components are excluded from this report]

TrB - Troup sand, 0 to 6 percent slopes

Troup (100%)

The Troup component makes up 100 percent of the map unit. Slopes are 0 to 6 percent. This component is on marine terraces on sandhills. The parent material consists of sandy and loamy marine deposits. Depth to a root restrictive layer is greater than 60 inches. The natural drainage class is somewhat excessively drained. Water movement in the most restrictive layer is moderately high. Available water to a depth of 60 inches is low. Shrink-swell potential is low. This soil is not flooded. It is not ponded. There is no zone of water saturation within a depth of 72 inches. Organic matter content in the surface horizon is about 0 percent. Nonirrigated land capability classification is 3s. This soil does not meet hydric criteria.