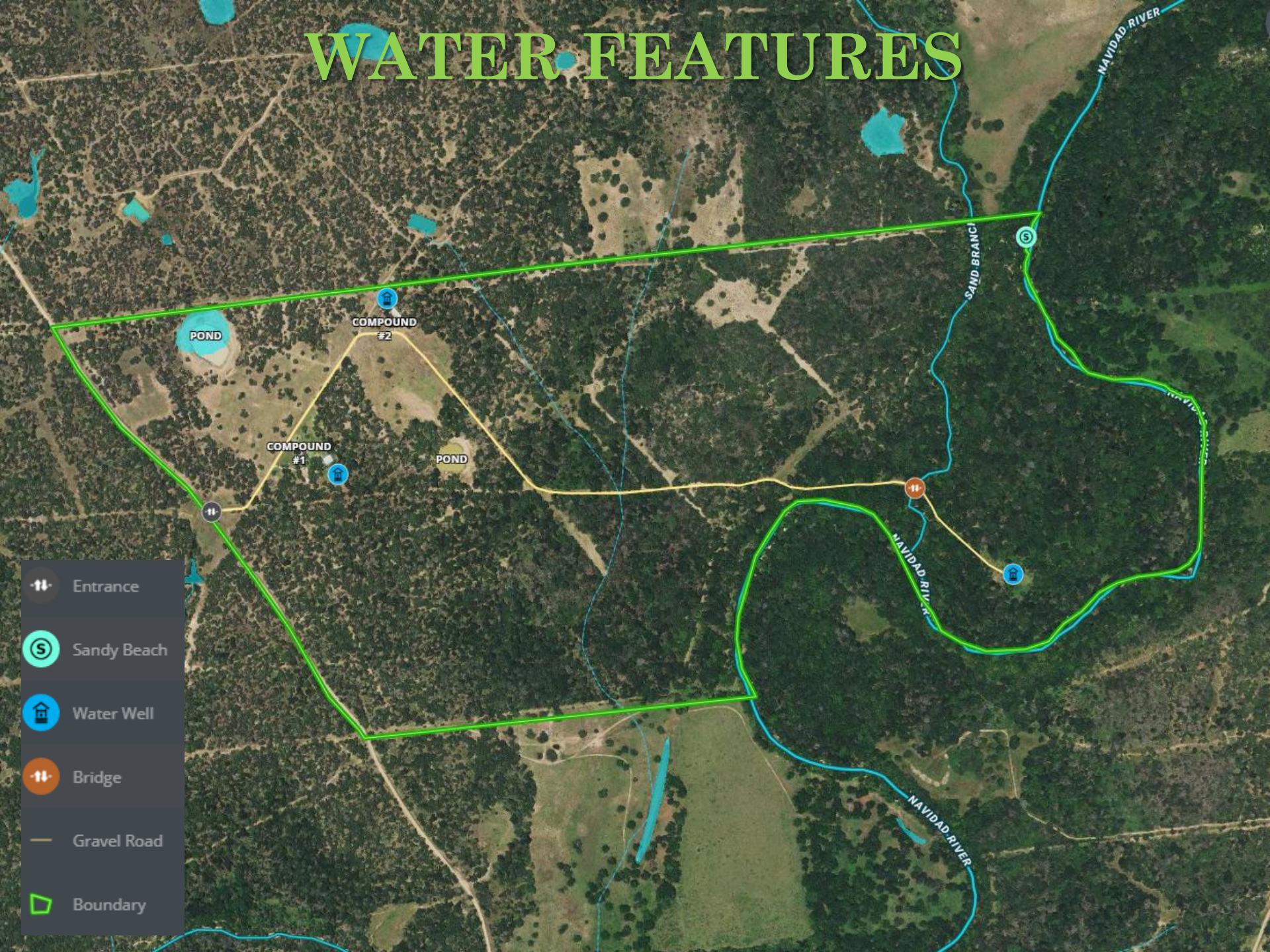
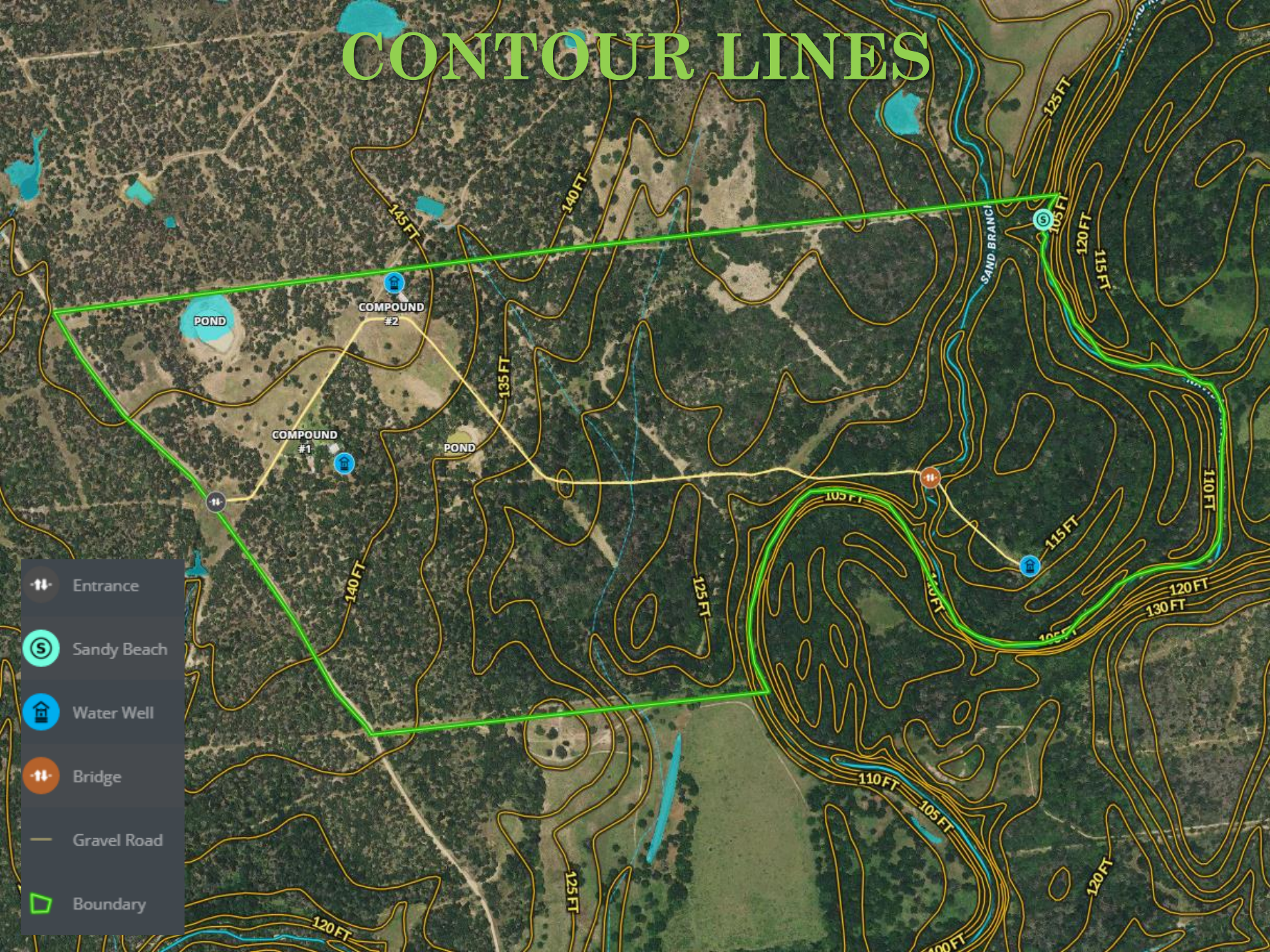


WATER FEATURES



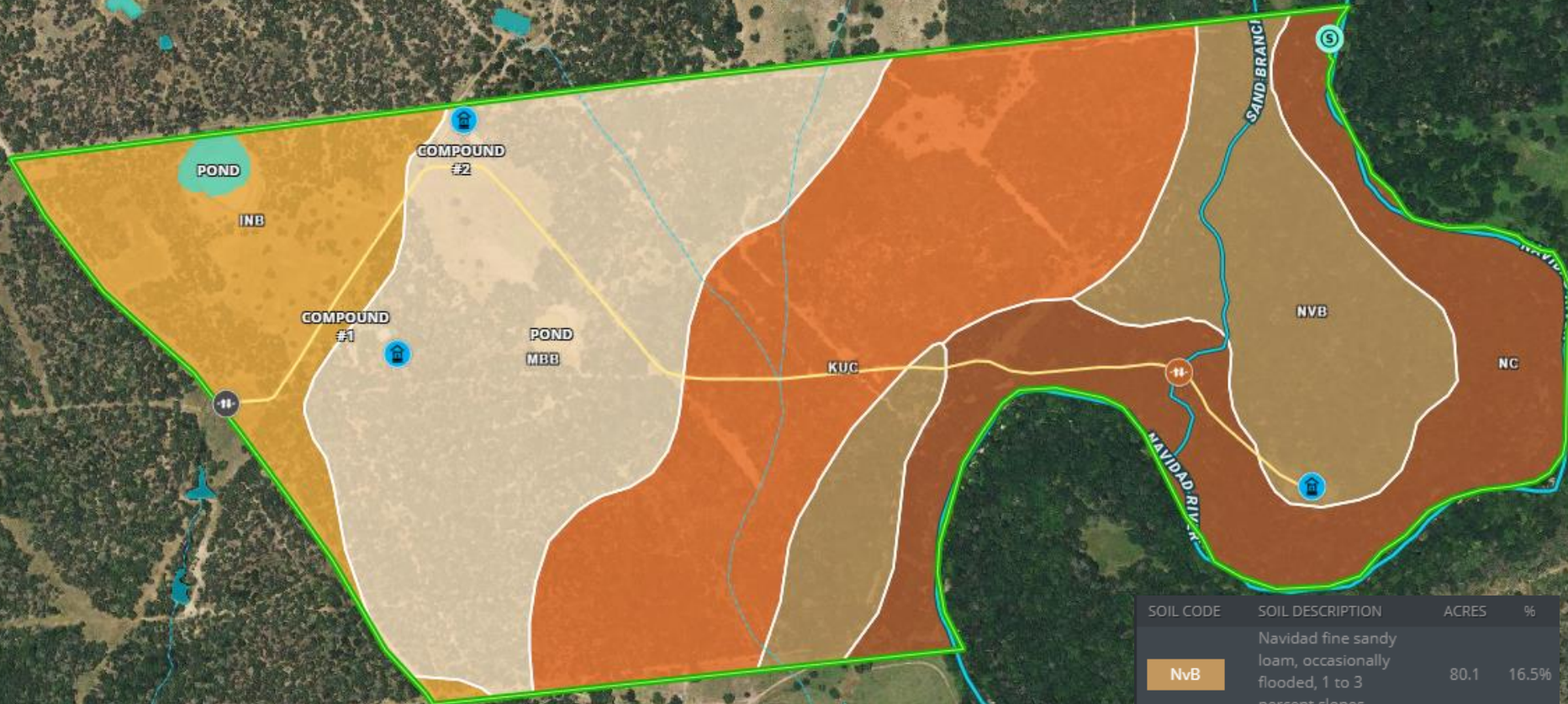
- Entrance
- Sandy Beach
- Water Well
- Bridge
- Gravel Road
- Boundary

CONTOUR LINES



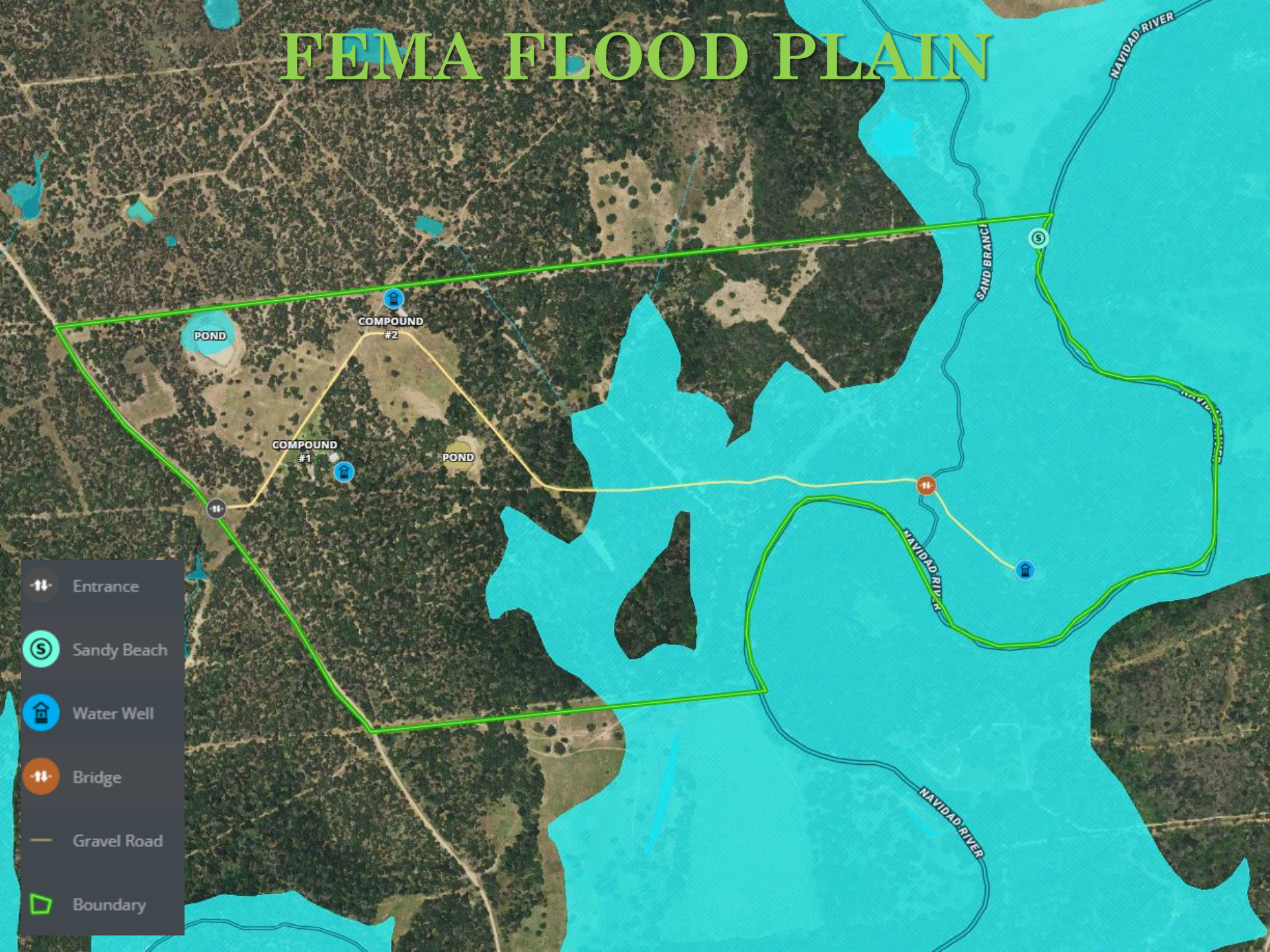
- Entrance
- Sandy Beach
- Water Well
- Bridge
- Gravel Road
- Boundary





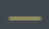

SOIL REPORT



SOIL CODE	SOIL DESCRIPTION	ACRES	%
NvB	Navidad fine sandy loam, occasionally flooded, 1 to 3 percent slopes	80.1	16.5%
KuC	Kuy loamy fine sand, 1 to 5 percent slopes	127.9	26.4%
MbB	Milby loamy sand, 0 to 3 percent slopes	132.9	27.4%
InB	Inez loamy fine sand, 0 to 2 percent slopes	61.8	12.8%
Nc	Navaca clay, frequently flooded	81.8	16.9%

FEMA FLOOD PLAIN



-  Entrance
-  Sandy Beach
-  Water Well
-  Bridge
-  Gravel Road
-  Boundary