

New Hwy 290

FM 359

SUBJECT

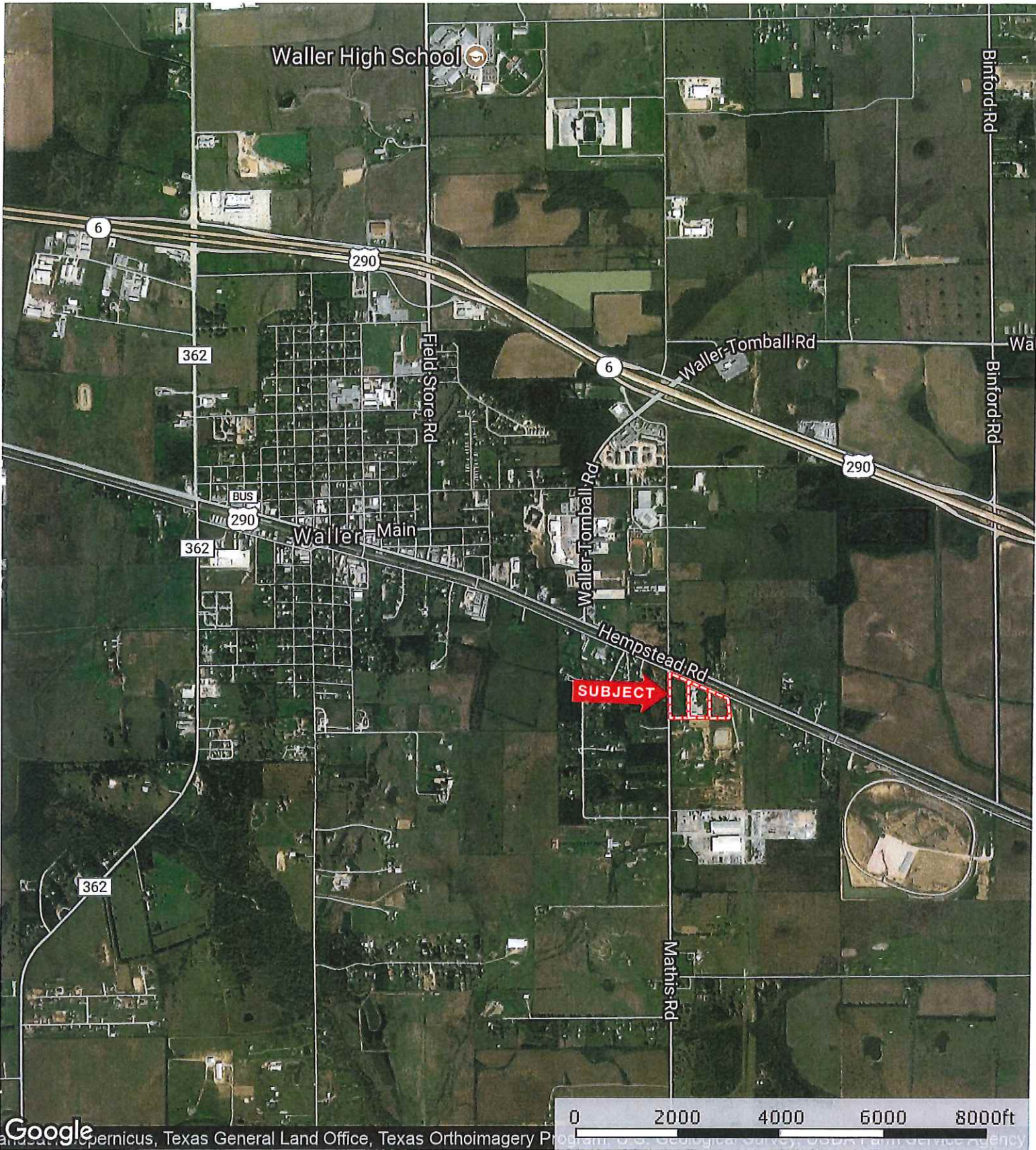
Cattle Creek Rd

BURTON CEMETARY

PINE GROVE ESTATES

MOUND CREEK SUBDIVISION



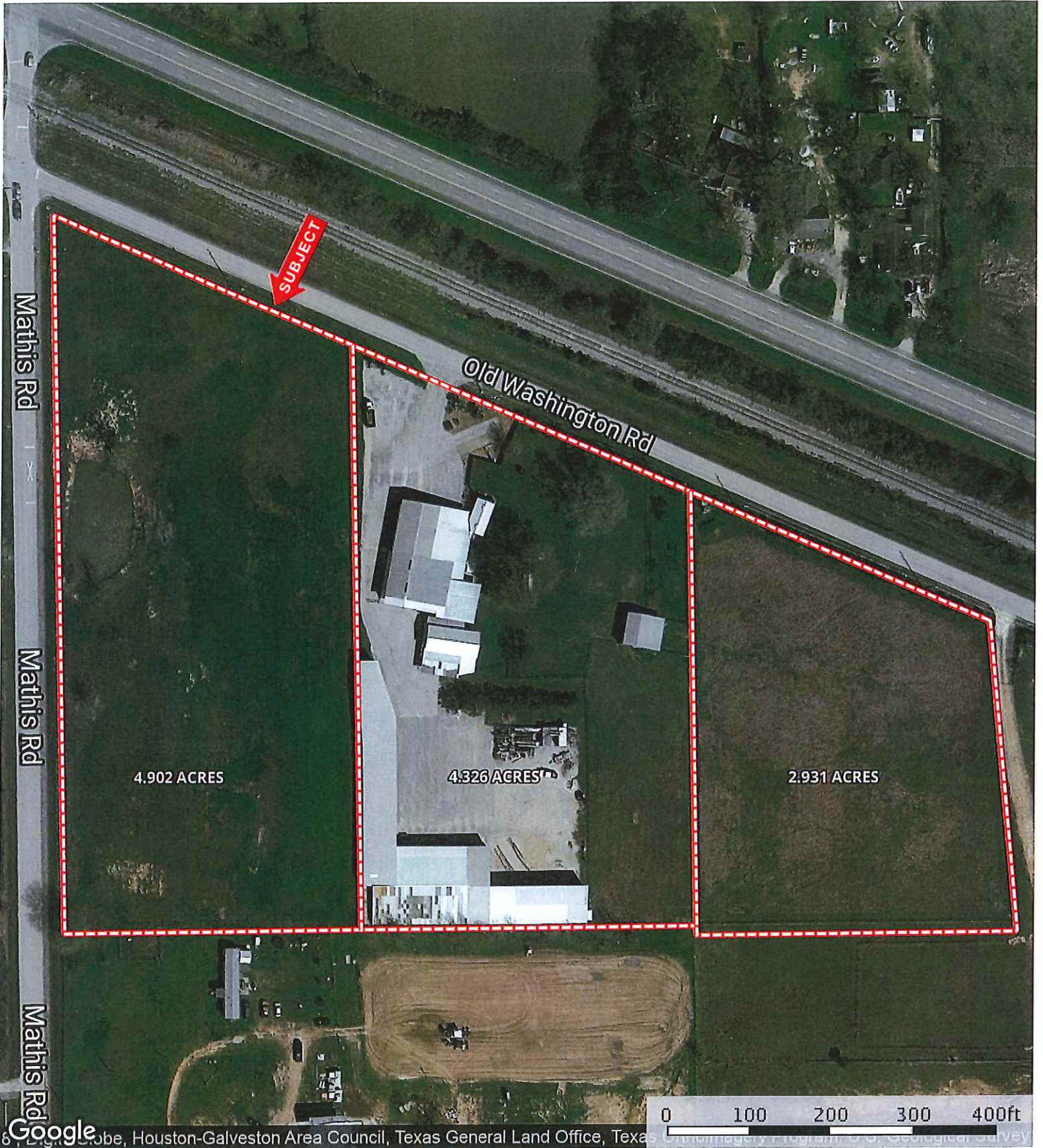


© 2022 Google, Texas General Land Office, Texas Orthoimagery Program, U.S. Geological Survey, Esri, and Service Agency

 Boundary



Washington St.  
Harris County, Texas, AC +/-



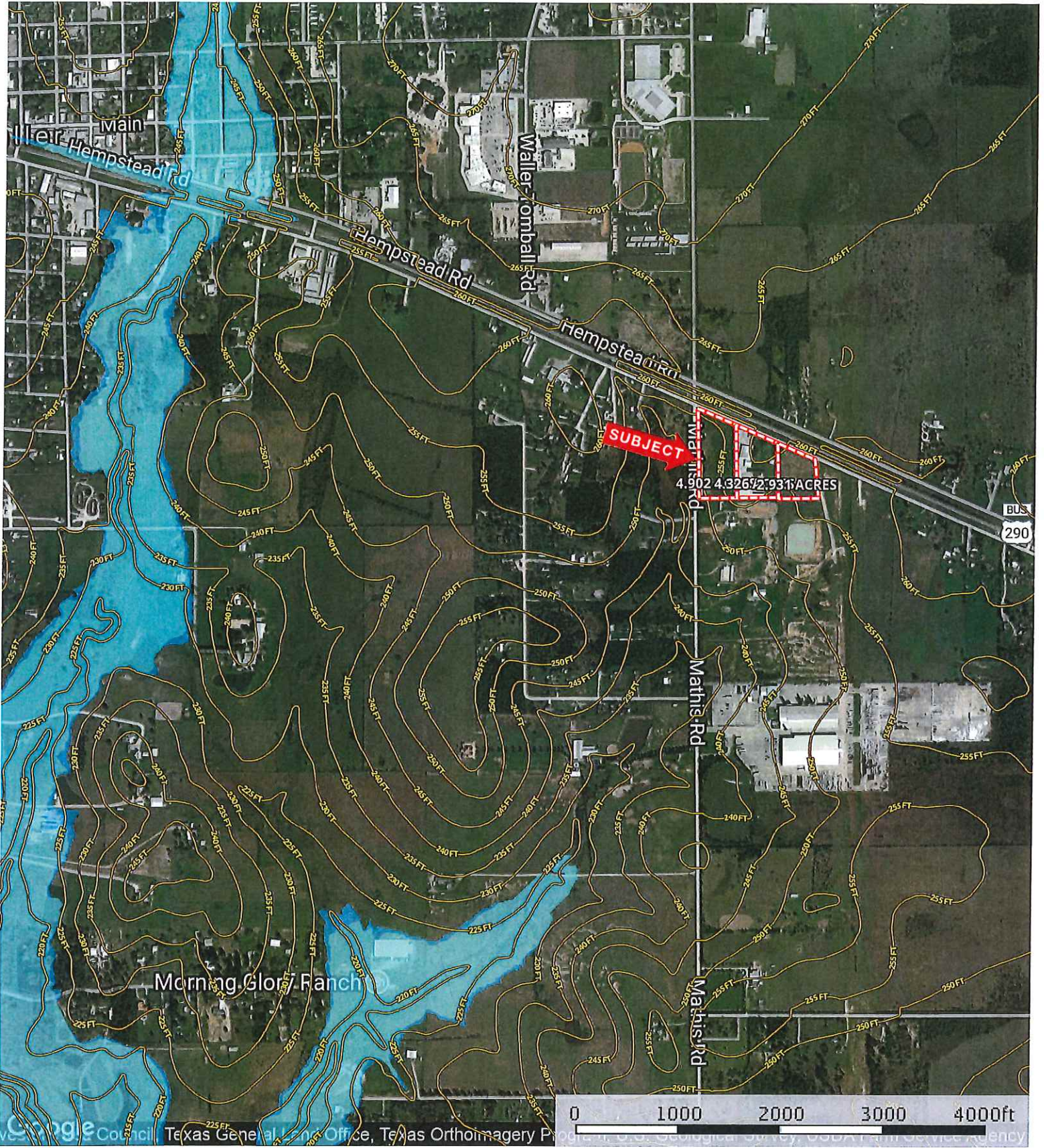
Google, Houston-Galveston Area Council, Texas General Land Office, Texas

Boundary

**M** The information contained herein was obtained from sources deemed to be reliable. MapRight Services makes no warranties or guarantees as to the completeness or accuracy thereof.



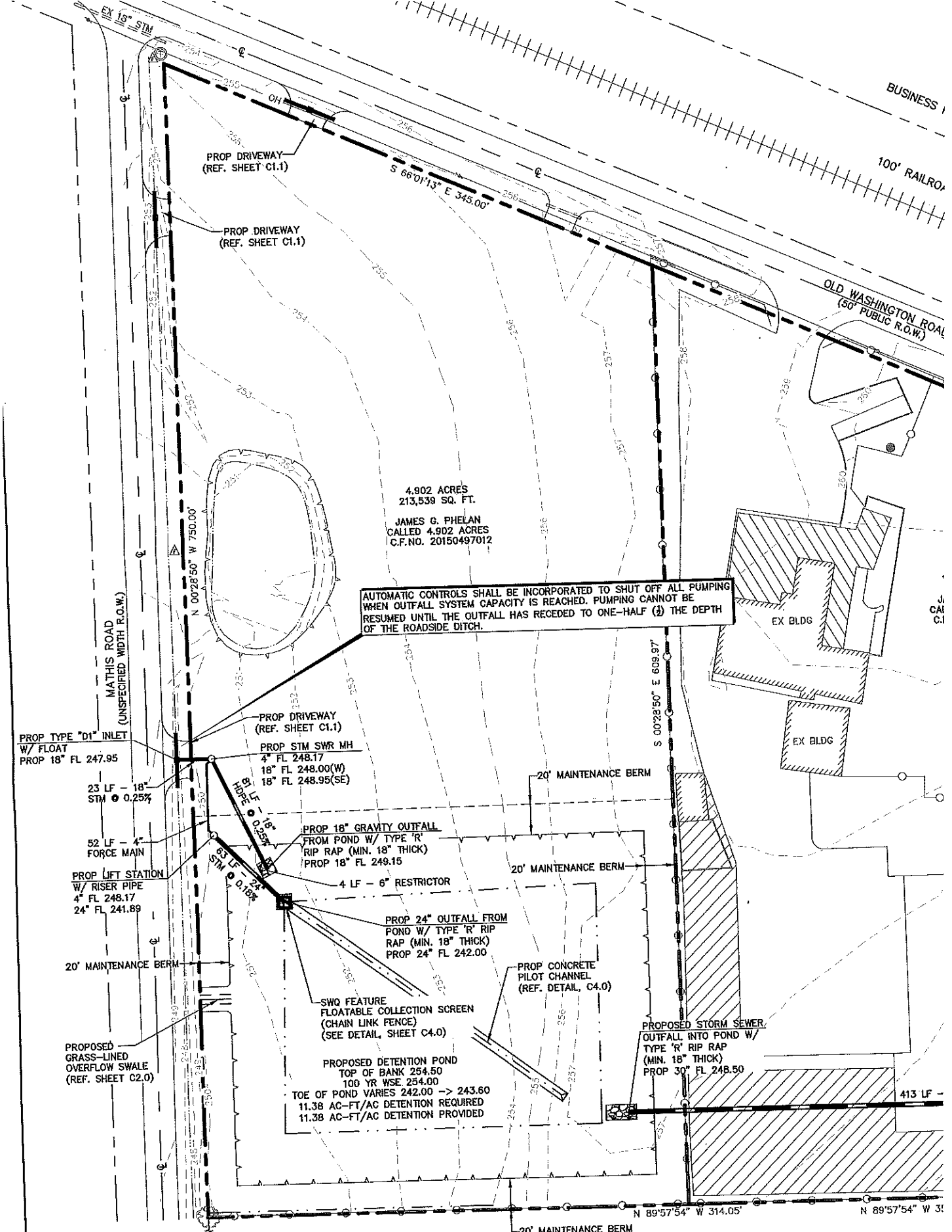
Washington St.  
Harris County, Texas, AC +/-



Boundary 100 Year Floodplain 500 Year Floodplain

**M** The information contained herein was obtained from sources deemed to be reliable. MapRight Services makes no warranties or guarantees as to the completeness or accuracy thereof.





PROP TYPE "01" INLET  
 W/ FLOAT  
 PROP 18" FL 247.95

23 LF - 18"  
 STM @ 0.25%

52 LF - 4"  
 FORCE MAIN

PROP LIFT STATION  
 W/ RISER PIPE  
 4" FL 248.17  
 24" FL 241.89

PROP DRIVEWAY  
 (REF. SHEET C1.1)

PROP STM SWR MH  
 4" FL 248.17  
 18" FL 248.00(W)  
 18" FL 248.95(SE)

PROP 18" GRAVITY OUTFALL  
 FROM POND W/ TYPE 'R'  
 RIP RAP (MIN. 18" THICK)  
 PROP 18" FL 249.15

4 LF - 6" RESTRICTOR

PROP 24" OUTFALL FROM  
 POND W/ TYPE 'R' RIP  
 RAP (MIN. 18" THICK)  
 PROP 24" FL 242.00

PROP CONCRETE  
 PILOT CHANNEL  
 (REF. DETAIL, C4.0)

SWQ FEATURE  
 FLOATABLE COLLECTION SCREEN  
 (CHAIN LINK FENCE)  
 (SEE DETAIL, SHEET C4.0)

PROPOSED DETENTION POND  
 TOP OF BANK 254.50  
 100 YR WSE 254.00  
 TOE OF POND VARIES 242.00 -> 243.60  
 11.38 AC-FT/AC DETENTION REQUIRED  
 11.38 AC-FT/AC DETENTION PROVIDED

PROPOSED STORM SEWER  
 OUTFALL INTO POND W/  
 TYPE 'R' RIP RAP  
 (MIN. 18" THICK)  
 PROP 30" FL 248.50

PROPOSED  
 GRASS-LINED  
 OVERFLOW SWALE  
 (REF. SHEET C2.0)

IRENE PESIC MANTECA, ET AL  
 CALLED 11.168 ACRES  
 C.F. NO. 20110261847C.F.