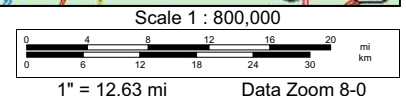
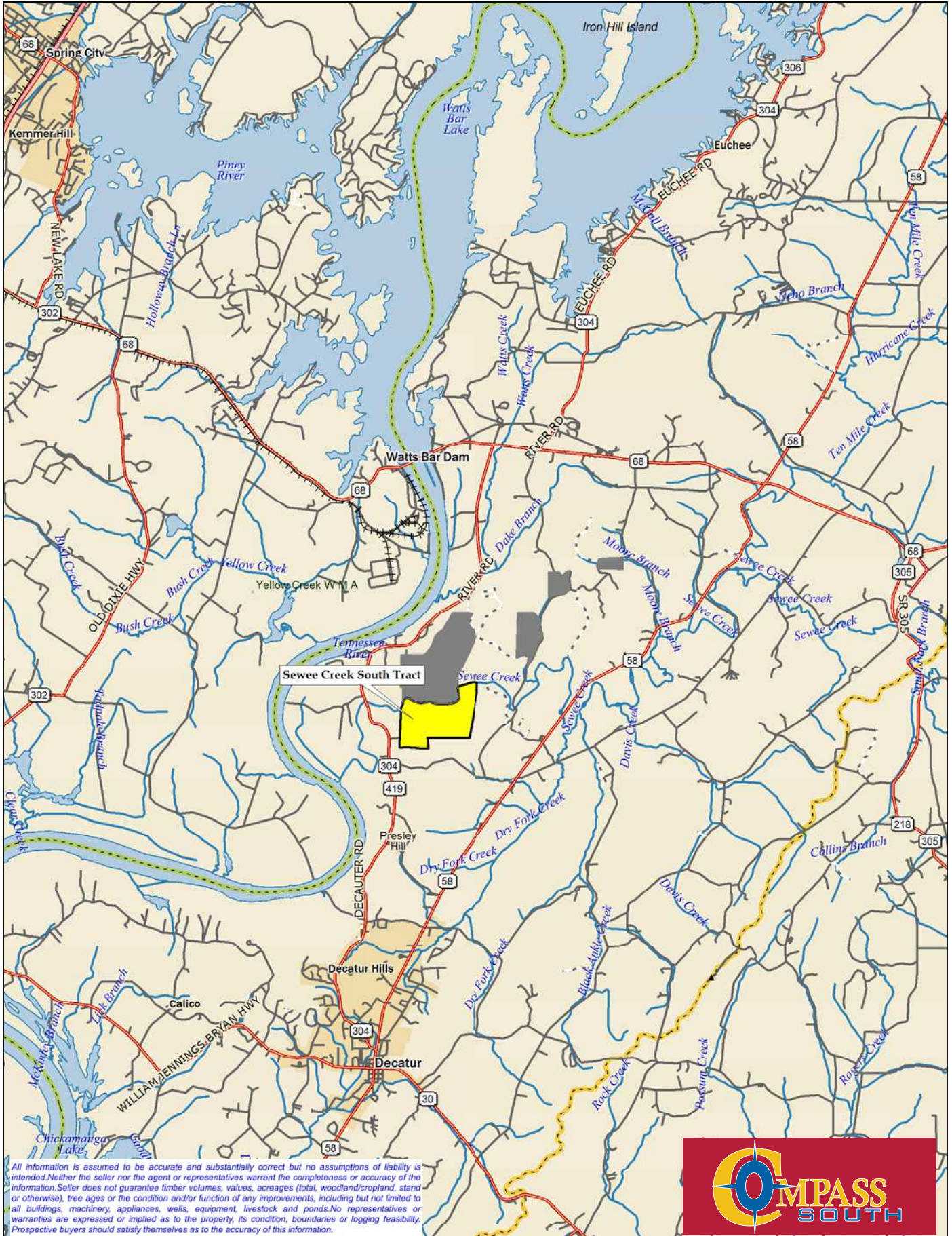


Data use subject to license.

© DeLorme. XMap® 5.2 GIS Enterprise.

www.delorme.com

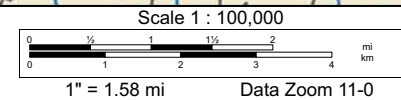




Data use subject to license.

© DeLorme. XMap® 5.2 GIS Enterprise.

www.delorme.com

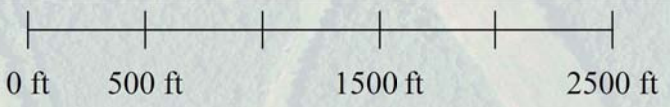


1" = 1.58 mi Data Zoom 11-0

Sewee Creek South Tract +/- 294 Acres

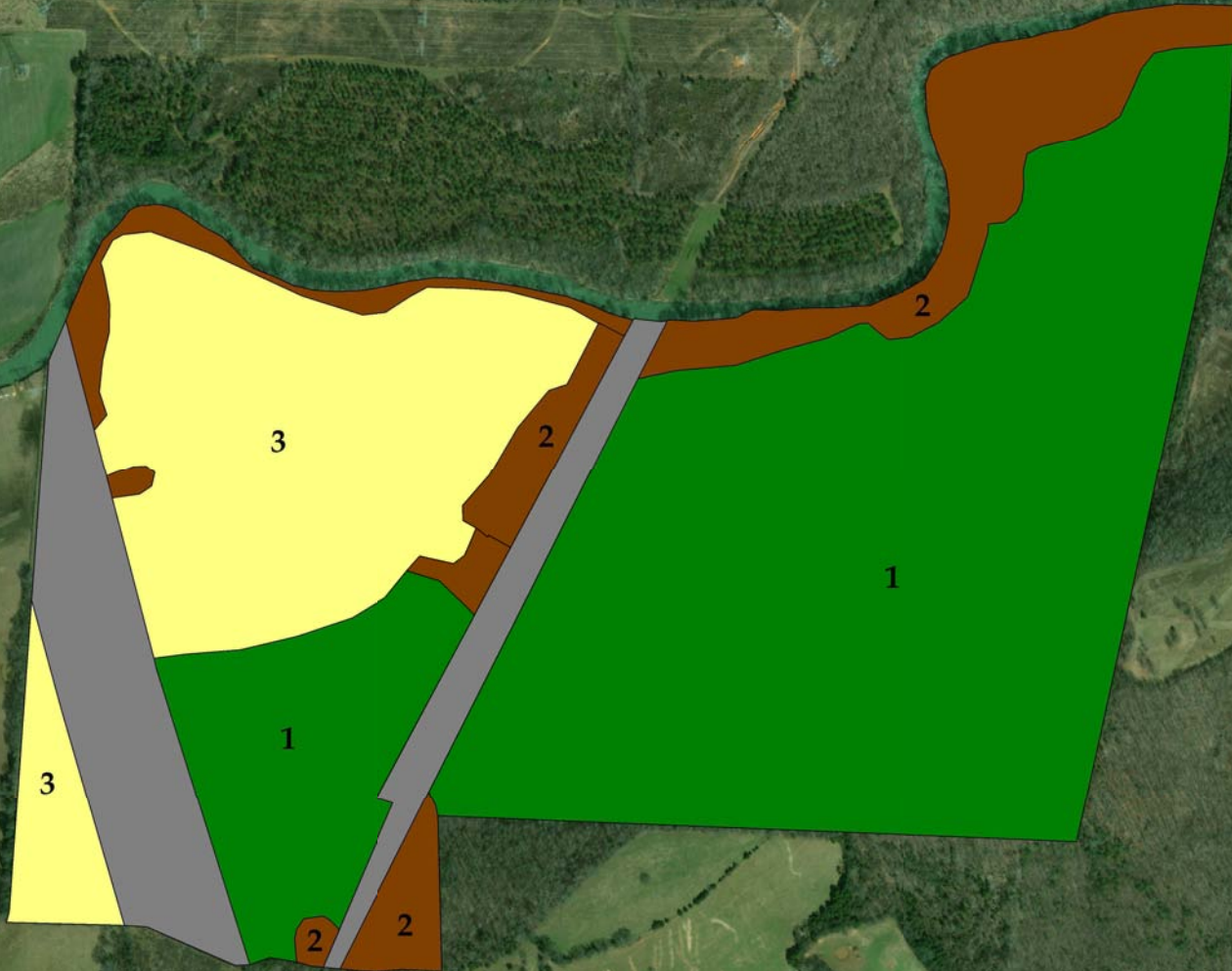


All information is assumed to be accurate and substantially correct but no assumptions of liability is intended. Neither the seller nor the agent or representatives warrant the completeness or accuracy of the information. Seller does not guarantee timber volumes, values, acreages (total, woodland/cropland, stand or otherwise), tree ages or the condition and/or function of any improvements, including but not limited to all buildings, machinery, appliances, wells, equipment, livestock and ponds. No representatives or warranties are expressed or implied as to the property, its condition, boundaries or logging feasibility. Prospective buyers should satisfy themselves as to the accuracy of this information.



Compass South, Inc.

Sewee Creek South Tract +/- 294 Acres



Stand #	Type	Acres
1	1999 Planted Loblolly	166
2	1960 Hardwood	35
3	Open/Fields	63
	Powerline ROW	30
	Total	294

All information is assumed to be accurate and substantially correct but no assumptions of liability is intended. Neither the seller nor the agent or representatives warrant the completeness or accuracy of the information. Seller does not guarantee timber volumes, values, acreages (total, woodland/cropland, stand or otherwise), tree ages or the condition and/or function of any improvements, including but not limited to all buildings, machinery, appliances, wells, equipment, livestock and ponds. No representatives or warranties are expressed or implied as to the property, its condition, boundaries or logging feasibility. Prospective buyers should satisfy themselves as to the accuracy of this information.

