

# Charlie Mayo Property

Approx. 160 Acres

Located Near Polkville in Smith County, MS

**\$240,000**  
(\$1,500/ac)



- frontage on Hwy 13
- logging road dissects property for easy access through property
- great long term investment property
- ready for planting pine trees and food plots
- multiple house sites
- more pictures at [HairstonForestry.com](http://HairstonForestry.com)



*For more information, please contact:*

**Buddy Hairston**

**601-854-7001 office**

**601-672-6290 cell**

***hairstonforestry@bellsouth.net***

**TERRY H. HAIRSTON, BROKER**

128 Whippoorwill Rd. Brandon, MS 39042 601-992-2270

# Charlie Mayo Tract


Township 4 North, Range 6 East, Smith County, MS

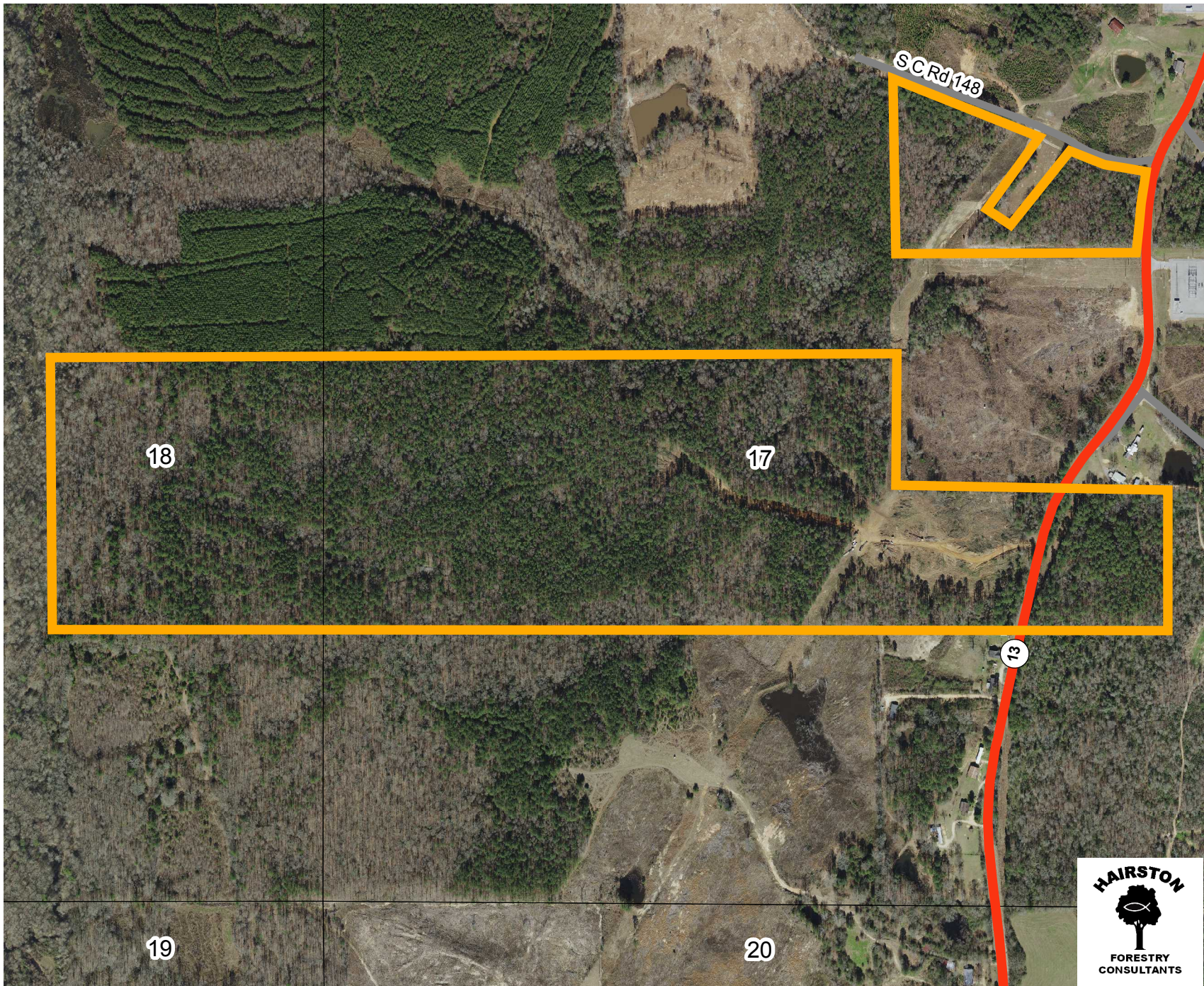
2017 Aerial Photo (Prior to Timber Harvest)



1 inch = 660 feet

## Legend

 Tract Boundary



# Charlie Mayo Tract


Township 4 North, Range 6 East, Smith County, MS

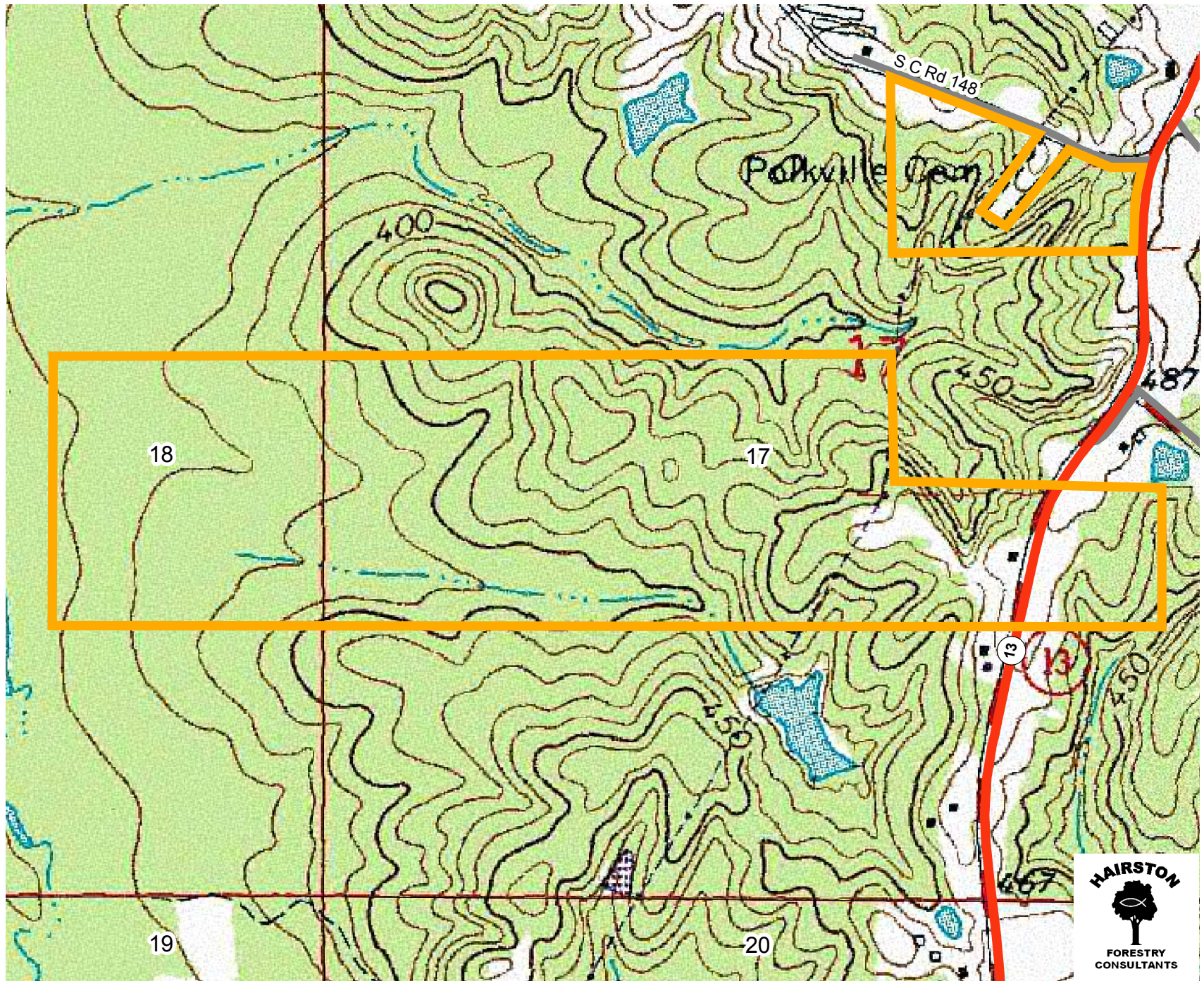
Topo Map



1 inch = 660 feet

## Legend

 Tract Boundary



# Charlie Mayo Tract


Township 4 North, Range 6 East, Smith County, MS

## Location Map



1 inch = 5,280 feet

### Legend

 Subject Tract

