



# V Bar Ranch      1920 Acres      Edwards County, TX



Located in southwestern Edwards county less than two miles off US377  
 Two points of access to ranch on western and southern sides  
 Beautiful, gentle rolling terrain  
 Red Bluff creek sweeps through property carving out scenic rock outcroppings  
 Numerous dry creek beds create thoroughfare for game to travel  
 Good soil for food plots in valleys  
 Miles upon miles of internal roads allow access to all parts of ranch  
 Cleared areas for blinds and feeders  
 Working water well with electric, submersible pump  
 Electricity runs east-west through the ranch and north-south along the western boundary  
 Perimeter fenced – 4ft, like-new livestock fencing on southern boundary  
 most other fences in good condition  
 Hunting in area is excellent!  
 Abundant game includes whitetail, turkey, hog, axis, aoudad, elk, and a variety of other rams  
 This ranch has been in the same family since the early 1900s  
 Priced to sell at \$1200/acre                      listing #1920

## Western Hill Country Realty

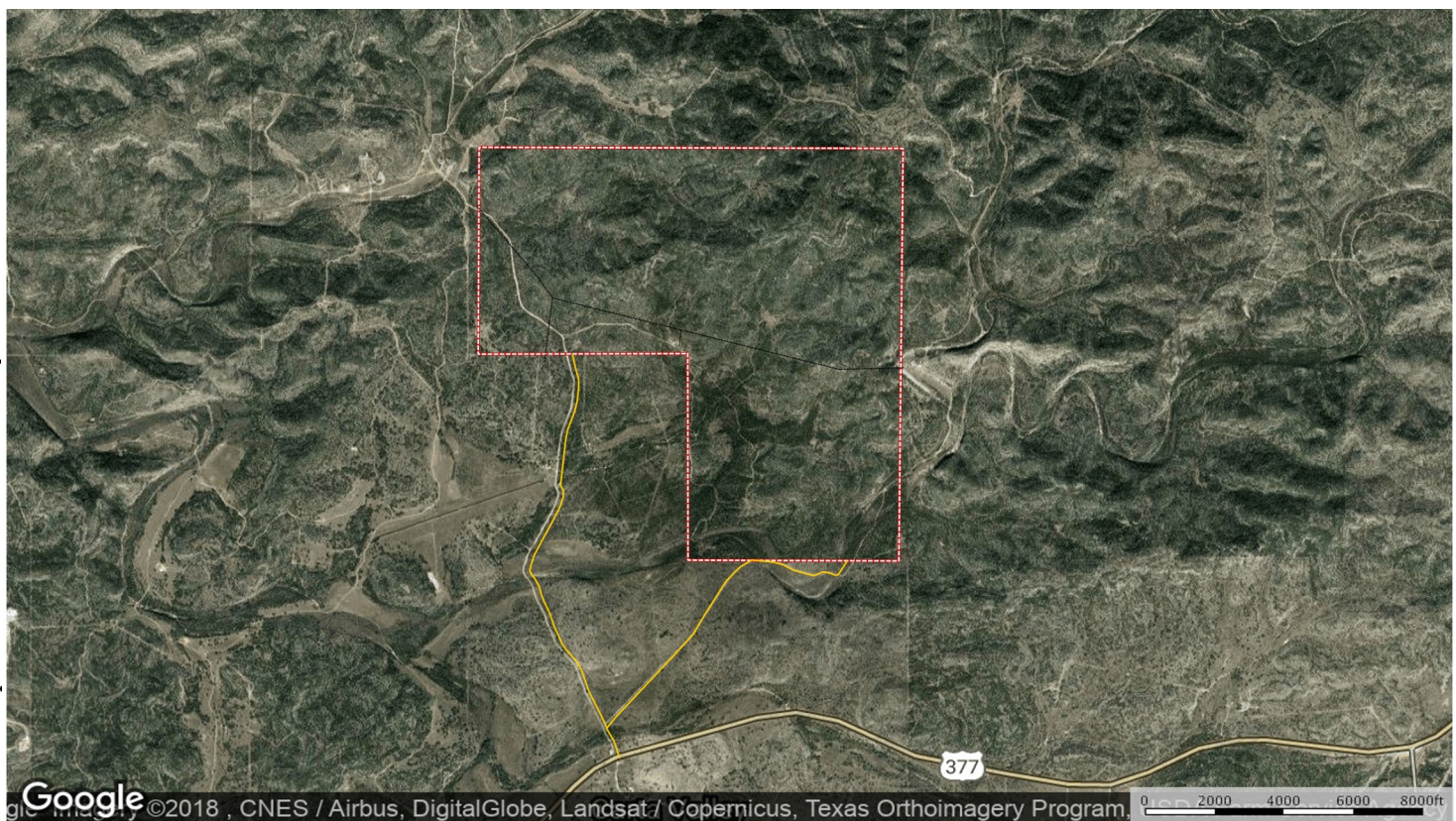
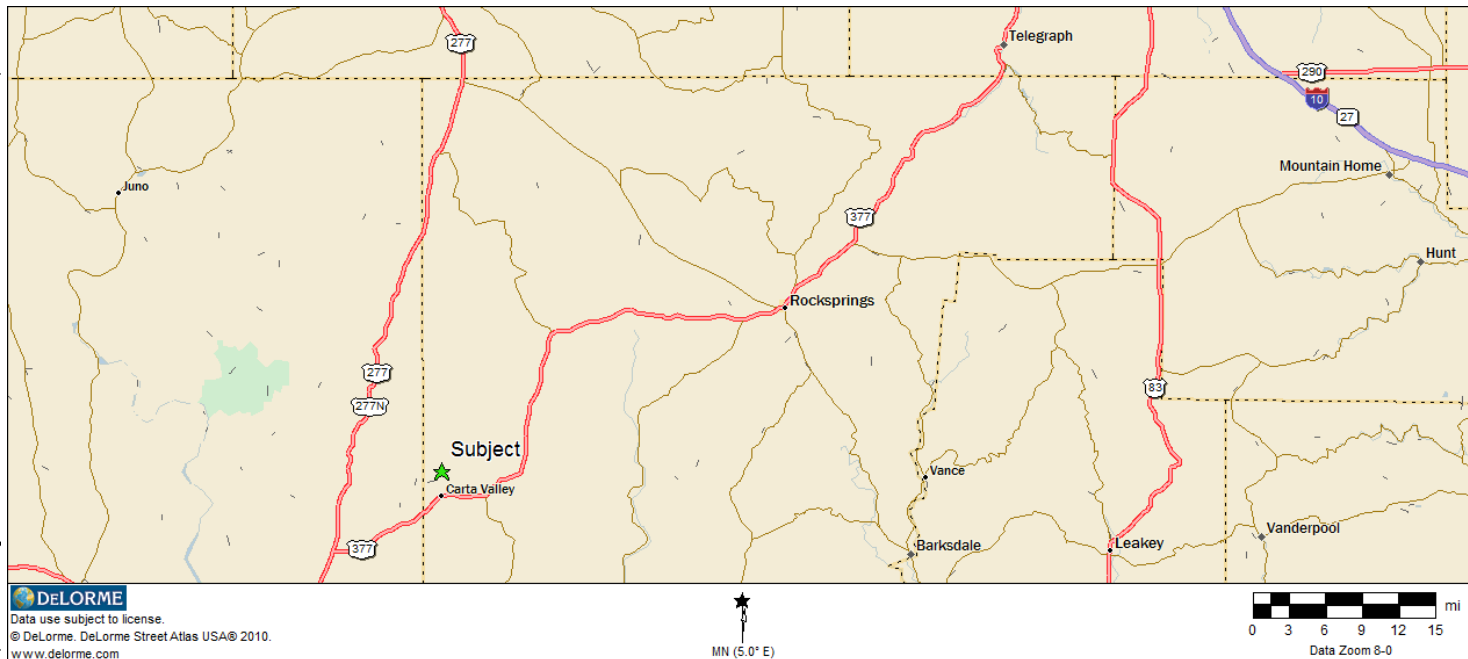
[www.westernhillcountryrealty.com](http://www.westernhillcountryrealty.com)

[info@westernhillcountryrealty.com](mailto:info@westernhillcountryrealty.com)

830-683-4435



# V Bar Ranch 1920 Acres Edwards County, TX



## Western Hill Country Realty

[www.westernhillcountryrealty.com](http://www.westernhillcountryrealty.com)

[info@westernhillcountryrealty.com](mailto:info@westernhillcountryrealty.com)

830-683-4435



**V Bar Ranch**

**1920 Acres**

**Edwards County, TX**



**Western Hill Country Realty**

[www.westernhillcountryrealty.com](http://www.westernhillcountryrealty.com)

[info@westernhillcountryrealty.com](mailto:info@westernhillcountryrealty.com)

830-683-4435