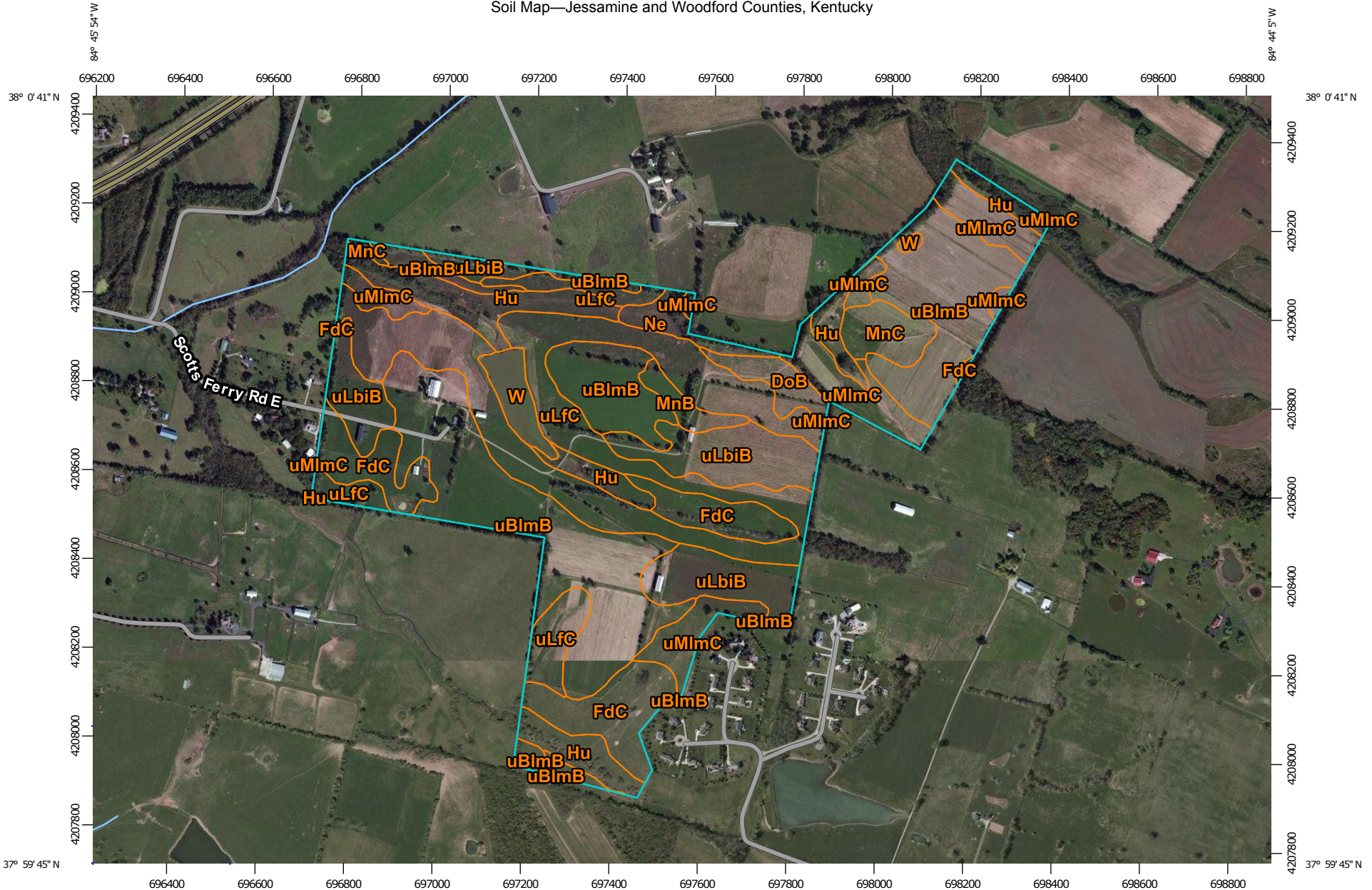


Soil Map—Jessamine and Woodford Counties, Kentucky



Map Scale: 1:12,200 if printed on A landscape (11" x 8.5") sheet.

0 150 300 600 900 Meters


0 500 1000 2000 3000 Feet

Map projection: Web Mercator Corner coordinates: WGS84 Edge tics: UTM Zone 16N WGS84





## MAP LEGEND

### Area of Interest (AOI)

 Area of Interest (AOI)

### Soils

 Soil Map Unit Polygons

 Soil Map Unit Lines

 Soil Map Unit Points

### Special Point Features



Blowout



Borrow Pit



Clay Spot



Closed Depression



Gravel Pit



Gravelly Spot



Landfill



Lava Flow



Marsh or swamp



Mine or Quarry



Miscellaneous Water



Perennial Water



Rock Outcrop



Saline Spot



Sandy Spot



Severely Eroded Spot



Sinkhole



Slide or Slip



Sodic Spot



Spoil Area



Stony Spot



Very Stony Spot



Wet Spot



Other



Special Line Features

### Water Features



Streams and Canals

### Transportation



Rails



Interstate Highways



US Routes



Major Roads



Local Roads

### Background



Aerial Photography

## MAP INFORMATION

The soil surveys that comprise your AOI were mapped at 1:20,000.

Please rely on the bar scale on each map sheet for map measurements.

Source of Map: Natural Resources Conservation Service  
 Web Soil Survey URL: <http://websoilsurvey.nrcs.usda.gov>  
 Coordinate System: Web Mercator (EPSG:3857)

Maps from the Web Soil Survey are based on the Web Mercator projection, which preserves direction and shape but distorts distance and area. A projection that preserves area, such as the Albers equal-area conic projection, should be used if more accurate calculations of distance or area are required.

This product is generated from the USDA-NRCS certified data as of the version date(s) listed below.

Soil Survey Area: Jessamine and Woodford Counties, Kentucky  
 Survey Area Data: Version 11, Sep 15, 2015

Soil map units are labeled (as space allows) for map scales 1:50,000 or larger.

Date(s) aerial images were photographed: Apr 17, 2010—Feb 20, 2012

The orthophoto or other base map on which the soil lines were compiled and digitized probably differs from the background imagery displayed on these maps. As a result, some minor shifting of map unit boundaries may be evident.

## Map Unit Legend

Jessamine and Woodford Counties, Kentucky (KY624)			
Map Unit Symbol	Map Unit Name	Acres in AOI	Percent of AOI
AsB	Ashton silt loam, 2 to 6 percent slopes	0.0	0.0%
DoB	Donerail silt loam, 2 to 6 percent slopes	4.3	1.7%
FdC	Faywood silt loam, 6 to 12 percent slopes	25.2	9.9%
Hu	Huntington silt loam	22.8	9.0%
MnB	McAfee silt loam, 2 to 6 percent slopes	2.9	1.1%
MnC	McAfee silt loam, 6 to 12 percent slopes	6.0	2.4%
Ne	Newark silt loam, 0 to 2 percent slopes, occasionally flooded	3.8	1.5%
uBlmB	Bluegrass-Maury silt loams, 2 to 6 percent slopes	74.2	29.3%
uLbiB	Lowell-Bluegrass silt loams, 2 to 6 percent slopes	29.2	11.5%
uLfc	Lowell-Faywood silt loams, 6 to 12 percent slopes	59.2	23.3%
uMlmC	Maury-Bluegrass silt loams, 6 to 12 percent slopes	21.4	8.4%
W	Water	4.8	1.9%
<b>Totals for Area of Interest</b>		<b>253.7</b>	<b>100.0%</b>