



64347 HARNEY AVE
CRANE, OR 97732

160 DEEDED
ACRES
ONE TAX LOT
NOT FENCED
SAGEBRUSH
GREAT VIEWS OF
SURROUNDING
AREA
NO YEAR ROUND
WATER
ACCESS WITH BLM
ROAD
HAVE YOUR OWN
PRIVATE CAMPING
SPOT

\$25,000.00

160 ACRES IN CATLOW VALLEY

LOCATION: Tax lot 2700, T36S, R 28 EWM.
(W1/2 W1/2 Section 17). This property is
about one mile east of Hart Mt. Antelope
Refuge, approximately 10 miles south of the
Rock Creek Road to Hart Mt. and about 6
miles NW of Beaty Butte.

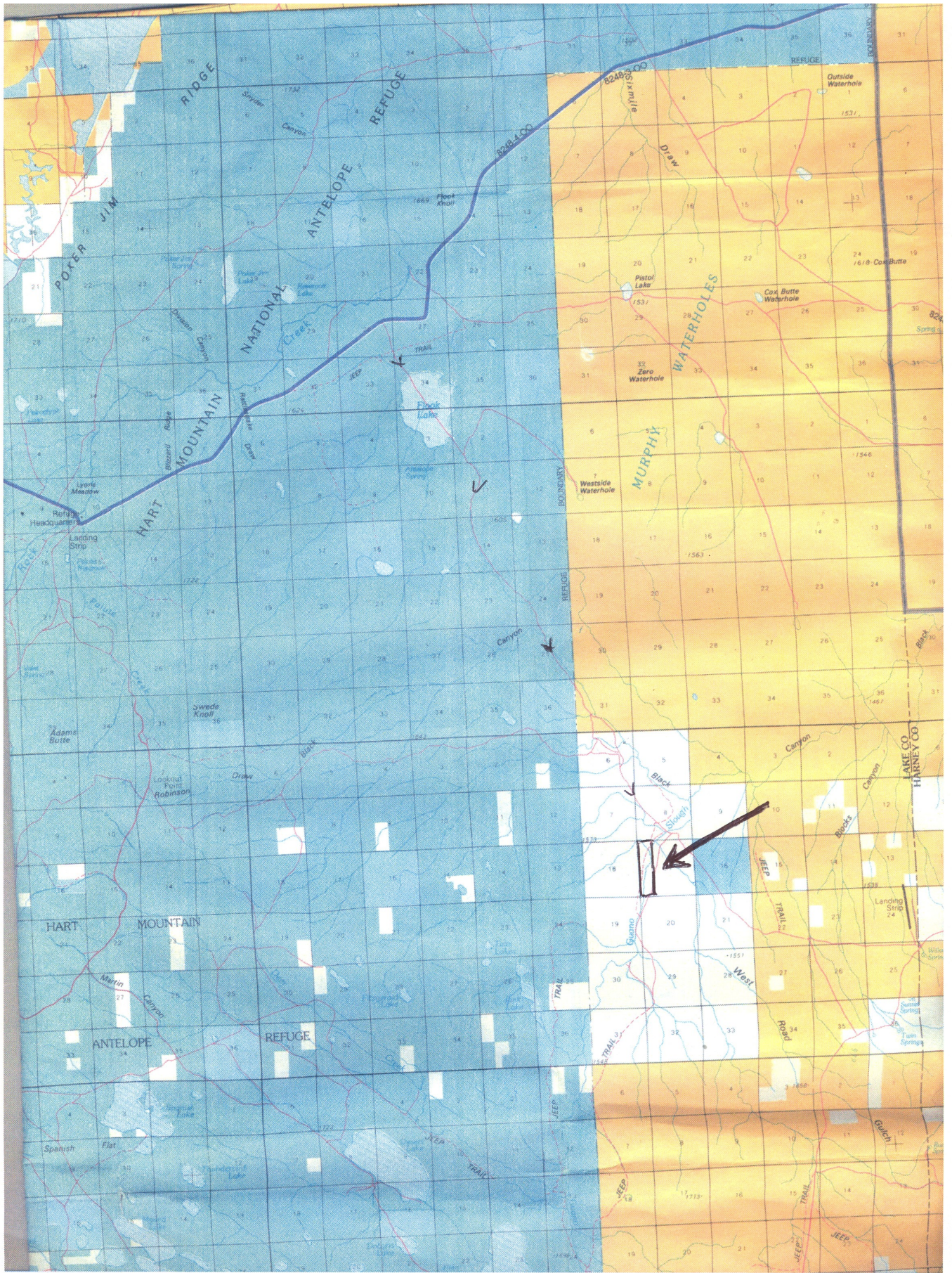
PROPERTY: This land is very remote in a
high desert region of mostly sagebrush. It is
not fenced and has BLM road access.

TAXES: \$19.35 - 2017-2018

REMARKS: This is a nice property in Catlow
Valley. It has access through it on a BLM road.
It appears to have some spring run-off water
in good years.

PRICE: \$25,000.00

ALL INFORMATION IS FROM SOURCES DEEMED RELIABLE, BUT IS NOT GUARANTEED BY THIS BROKER OR HIS
AGENTS. PROSPECTIVE BUYERS SHOULD CHECK ALL INFORMATION TO THEIR OWN SATISFACTION. PROPERTY
IS SUBJECT TO PRIOR SALE, PRICE CHANGE, CORRECTION, OR WITHDRAWAL.

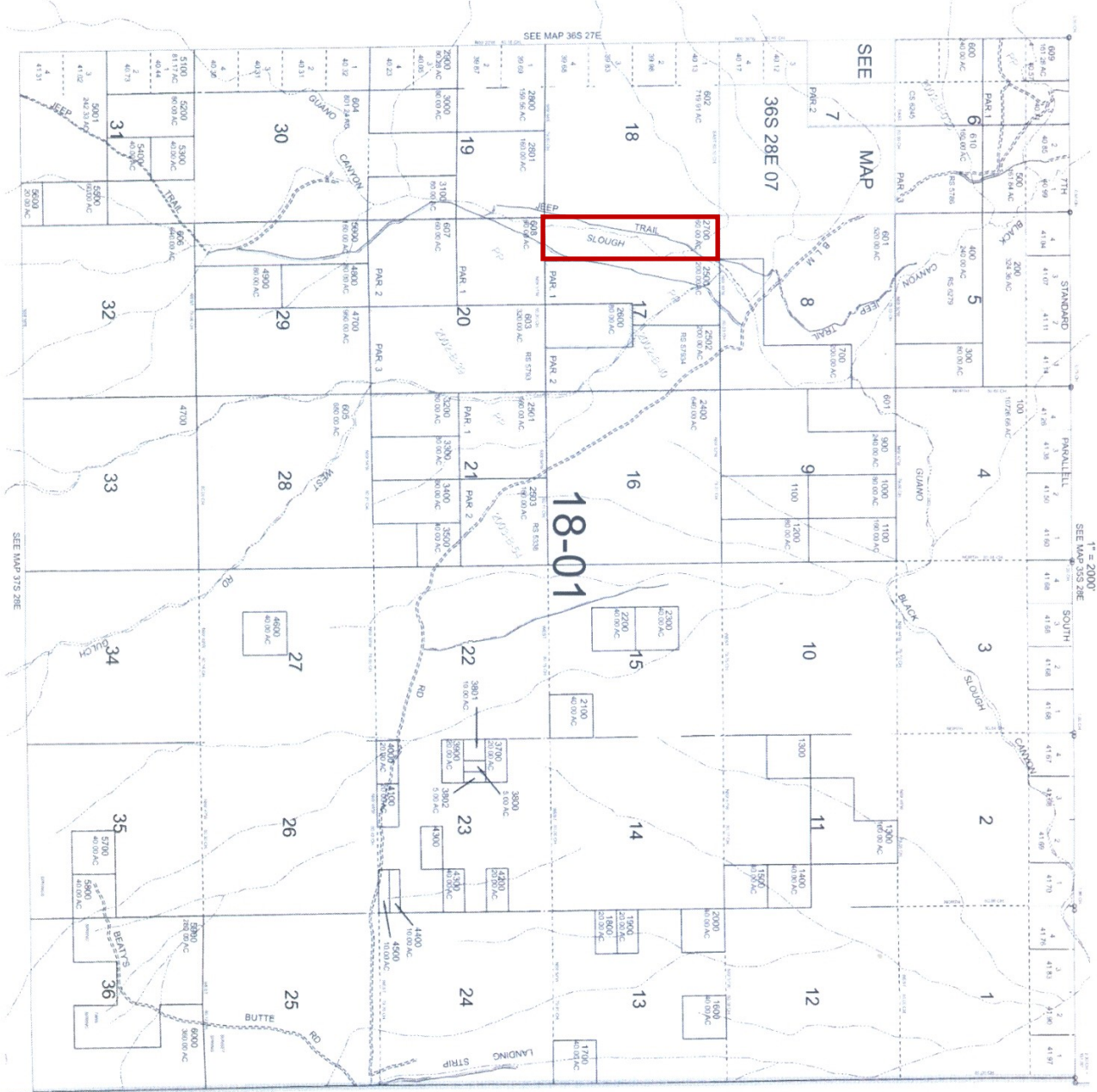


THIS MAP WAS PREPARED FOR ASSESSMENT PURPOSE ONLY



T.36S, R.28E W.M.
LAKE COUNTY

36S28E
& INDEX
CANCELLED
3000
3000



SEE MAP 36S 27E

SEE MAP

36S 28E 07

SEE MAP 36S 28E

SEE MAP 36S 28E

HARNEY

COUNTY

Revised, M.A.
2/8/2011
36S28E
& INDEX