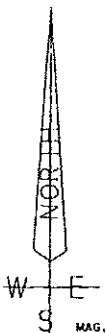
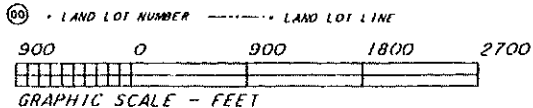


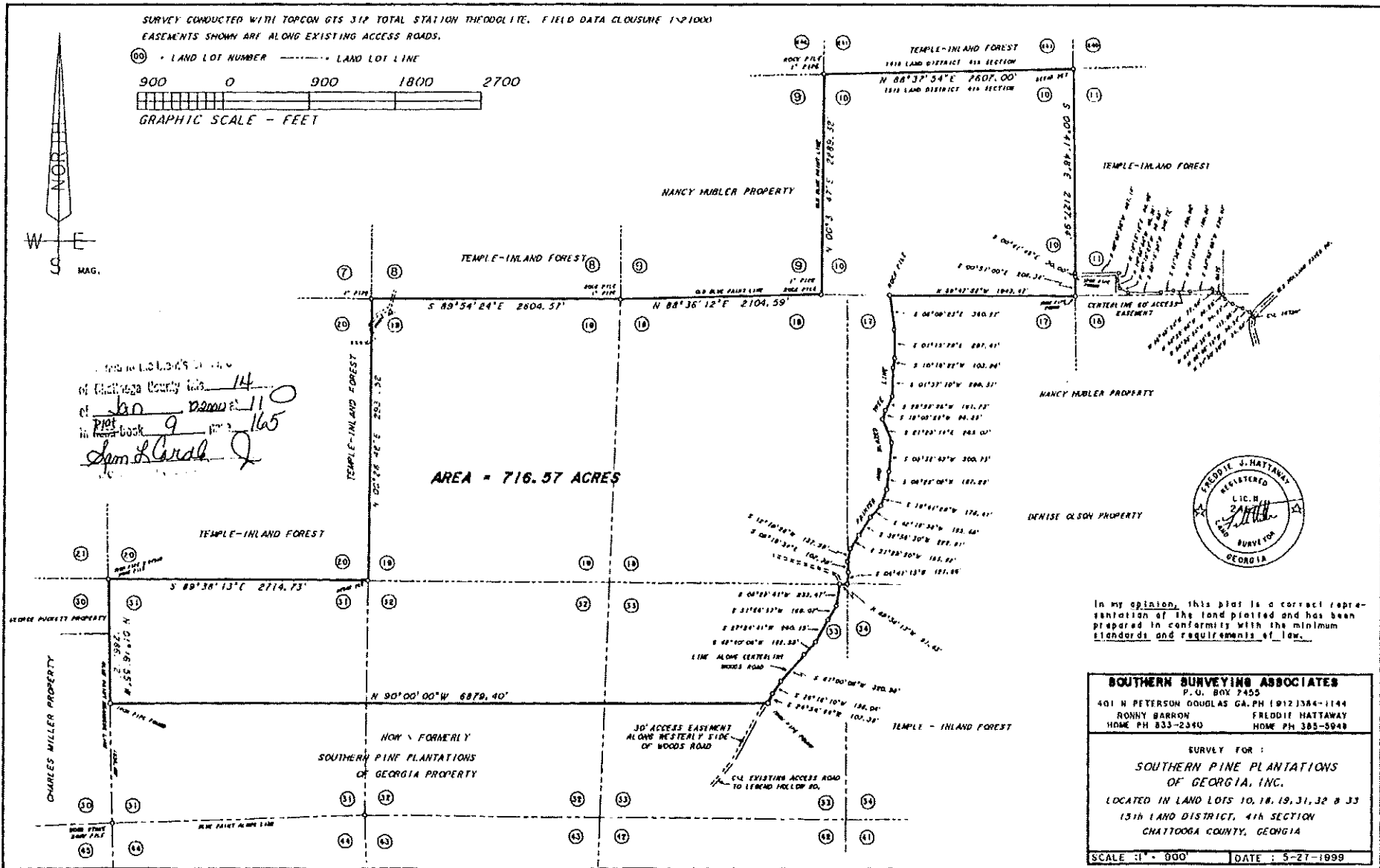
SURVEY CONDUCTED WITH TOPCON GTS 31P TOTAL STATION THEODOLITE. FIELD DATA CLOSURE 1/1000
 EASEMENTS SHOWN ARE ALONG EXISTING ACCESS ROADS.



W E
S MAG.

Land Lots 10, 18, 19, 31, 32 & 33
 of Chattooga County Ga. 14
 of Book 9 Page 110
 in Plat Book 9 Page 165
Sam L. Gresh

AREA = 716.57 ACRES



In my opinion, this plat is a correct representation of the land plotted and has been prepared in conformity with the minimum standards and requirements of law.

SOUTHERN SURVEYING ASSOCIATES	
P.O. BOX 2455	
401 N PETERSON DOUGLAS GA. PH 19121384-1144	FREDDIE HATTAWAY
RONNY BARRON	HDMR PH 833-2340
HDMR PH 385-5948	
SURVEY FOR:	
SOUTHERN PINE PLANTATIONS OF GEORGIA, INC.	
LOCATED IN LAND LOTS 10, 18, 19, 31, 32 & 33	
15th LAND DISTRICT, 4th SECTION	
CHATTOOGA COUNTY, GEORGIA	
SCALE: 1" = 300'	DATE: 5-27-1999