



22853

2499
70549

2673

3593

7797

727
17498

1507

1503

2912

19711

A-95
STEPHENSON,
JIP
6486

1973

19733

70897

8183

8985

6485

20828

A-124
BELL, T

5524

17404

10106

A-271
MOORE, JW

3286

2508

20830

58996

30298

17405

55320

18986

78962

79000

3324

30295

78997

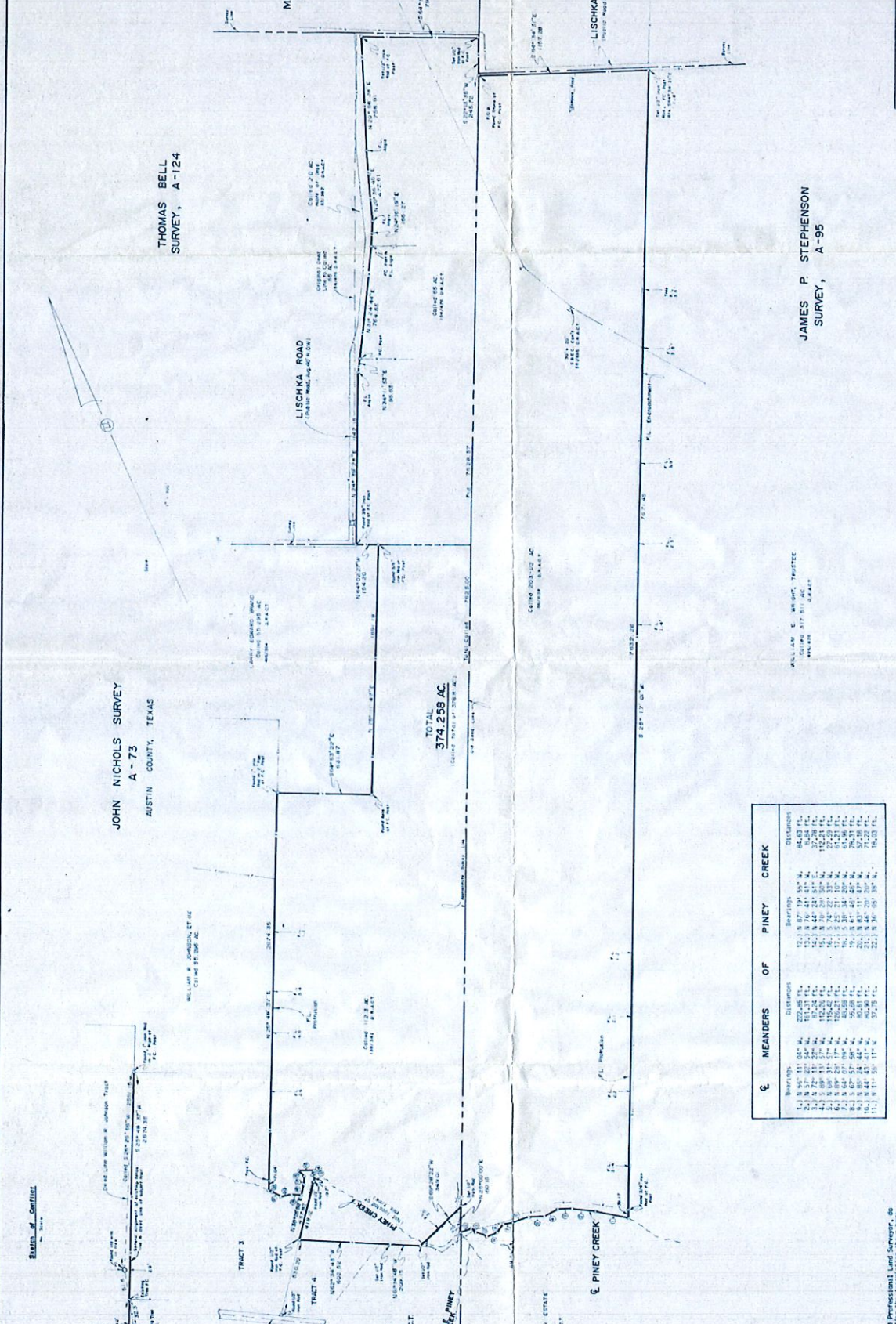
29003

22346

BO

24

073



MEANDERS OF PINEY CREEK	
Bearings	Distances
S 89° 11' 00" W	223.45 FT.
S 71° 20' 54" W	151.31 FT.
S 70° 13' 57" W	112.70 FT.
S 69° 13' 57" W	112.70 FT.
S 68° 13' 57" W	112.70 FT.
S 67° 13' 57" W	112.70 FT.
S 66° 13' 57" W	112.70 FT.
S 65° 13' 57" W	112.70 FT.
S 64° 13' 57" W	112.70 FT.
S 63° 13' 57" W	112.70 FT.
S 62° 13' 57" W	112.70 FT.
S 61° 13' 57" W	112.70 FT.
S 60° 13' 57" W	112.70 FT.
S 59° 13' 57" W	112.70 FT.
S 58° 13' 57" W	112.70 FT.
S 57° 13' 57" W	112.70 FT.
S 56° 13' 57" W	112.70 FT.
S 55° 13' 57" W	112.70 FT.
S 54° 13' 57" W	112.70 FT.
S 53° 13' 57" W	112.70 FT.
S 52° 13' 57" W	112.70 FT.
S 51° 13' 57" W	112.70 FT.
S 50° 13' 57" W	112.70 FT.
S 49° 13' 57" W	112.70 FT.
S 48° 13' 57" W	112.70 FT.
S 47° 13' 57" W	112.70 FT.
S 46° 13' 57" W	112.70 FT.
S 45° 13' 57" W	112.70 FT.
S 44° 13' 57" W	112.70 FT.
S 43° 13' 57" W	112.70 FT.
S 42° 13' 57" W	112.70 FT.
S 41° 13' 57" W	112.70 FT.
S 40° 13' 57" W	112.70 FT.
S 39° 13' 57" W	112.70 FT.
S 38° 13' 57" W	112.70 FT.
S 37° 13' 57" W	112.70 FT.
S 36° 13' 57" W	112.70 FT.
S 35° 13' 57" W	112.70 FT.
S 34° 13' 57" W	112.70 FT.
S 33° 13' 57" W	112.70 FT.
S 32° 13' 57" W	112.70 FT.
S 31° 13' 57" W	112.70 FT.
S 30° 13' 57" W	112.70 FT.
S 29° 13' 57" W	112.70 FT.
S 28° 13' 57" W	112.70 FT.
S 27° 13' 57" W	112.70 FT.
S 26° 13' 57" W	112.70 FT.
S 25° 13' 57" W	112.70 FT.
S 24° 13' 57" W	112.70 FT.
S 23° 13' 57" W	112.70 FT.
S 22° 13' 57" W	112.70 FT.
S 21° 13' 57" W	112.70 FT.
S 20° 13' 57" W	112.70 FT.
S 19° 13' 57" W	112.70 FT.
S 18° 13' 57" W	112.70 FT.
S 17° 13' 57" W	112.70 FT.
S 16° 13' 57" W	112.70 FT.
S 15° 13' 57" W	112.70 FT.
S 14° 13' 57" W	112.70 FT.
S 13° 13' 57" W	112.70 FT.
S 12° 13' 57" W	112.70 FT.
S 11° 13' 57" W	112.70 FT.
S 10° 13' 57" W	112.70 FT.
S 9° 13' 57" W	112.70 FT.
S 8° 13' 57" W	112.70 FT.
S 7° 13' 57" W	112.70 FT.
S 6° 13' 57" W	112.70 FT.
S 5° 13' 57" W	112.70 FT.
S 4° 13' 57" W	112.70 FT.
S 3° 13' 57" W	112.70 FT.
S 2° 13' 57" W	112.70 FT.
S 1° 13' 57" W	112.70 FT.
S 0° 13' 57" W	112.70 FT.

This survey was performed in connection with the transaction described in the instrument recorded in the Public Records of the County of Travis, State of Texas, Book 14, Page 10000.

I, Glen S. Alexander, Registered Professional Land Surveyor, #1114, do hereby certify that the data and the description shown herein accurately represent the results of an on the ground survey and all corners are as shown hereon. There are no encroachments, conflicts, or portions apparent on the ground except as shown.

USE OF THIS SURVEY FOR ANY OTHER PURPOSE OR BY OTHER PARTIES SHALL BE AT THEIR OWN RISK AND THE UNDERSIGNED SURVEYOR IS NOT RESPONSIBLE FOR ANY LOSS RESULTING THEREFROM.

MARTHA BELL LISCHKA WAYNE
LAVERNE LISCHKA DANNAHAUS

ALEXANDER SURVEYING
228 W. Main St., P.O. Box 396
Austin, Texas 78701
Phone: 512-476-1111

Glen S. Alexander, Registered Professional Land Surveyor, #1114
J. Lee Smith, Registered Professional Land Surveyor, #1114
C. Lee Smith, Registered Professional Land Surveyor, #1114
Work Order: 1879

