

91.17 +/- ACRES  
CAROLINE COUNTY, VIRGINIA

---

PRICE - \$219,000



REPRESENTED BY:  
WILLIAM G. GRANT  
ALC, VLS  
804-754-3476

G. EDMOND MASSIE, IV  
ALC, CCIM  
804-754-3474

# TABLE OF CONTENTS

---

- I. PROPERTY DESCRIPTION
- II. PHOTOS
- III. TAX MAP
- IV. AERIAL PHOTO
- V. TOPOGRAPHIC MAP
- VI. LOCATION MAP

# PROPERTY DESCRIPTION

---

The subject property is shown on Caroline County Tax Map records as parcel number 53-A-83. According to the tax records the property contains 91.17 acres. The deed is recorded in Deed Book 528 on Page 842. A review of the Caroline County Tax Records indicates the following:

<u>Tax Map Number</u>	<u>Acreage</u>
53-A-83	91.17

The subject property is currently zoned RP (Rural Preservation). There are approximately 635' of road frontage on Route 672.

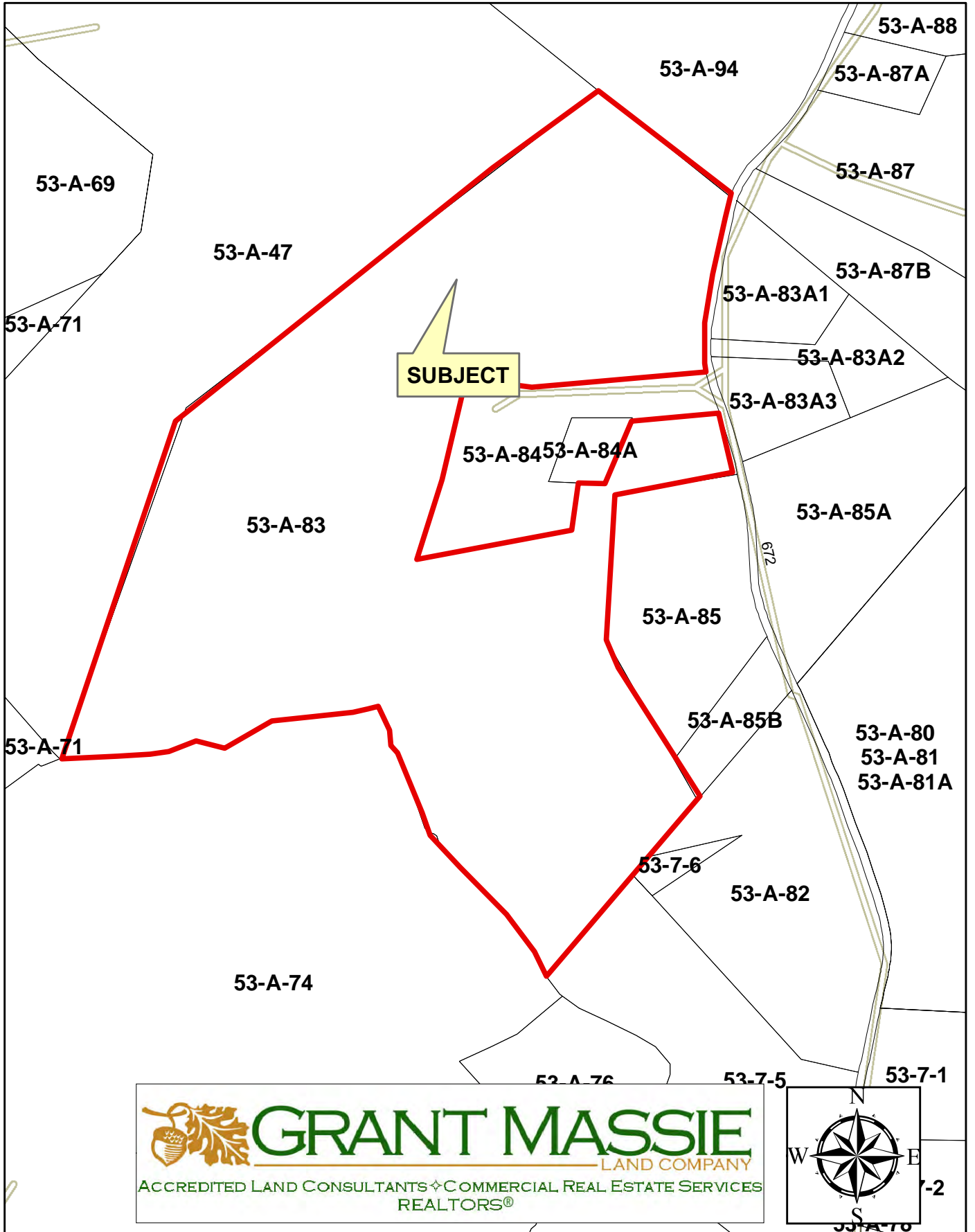
This tract has approximately 17.5 acres of cropland with the balance in being in 16-20 year old mixed timber.

**Approximate Location – 18200 Boxley Road, Ruther Glen, VA 22546**

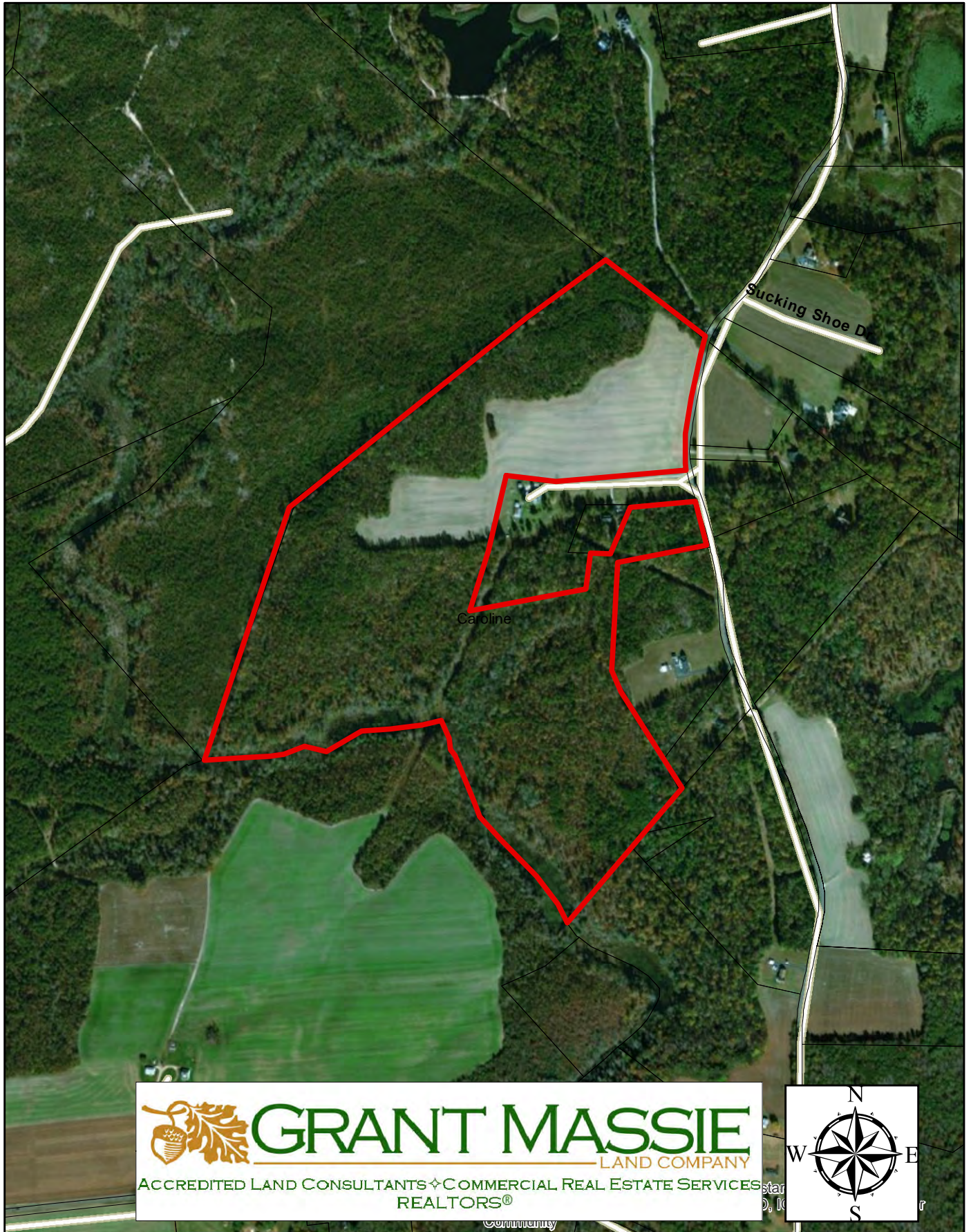
# PHOTOGRAPHS



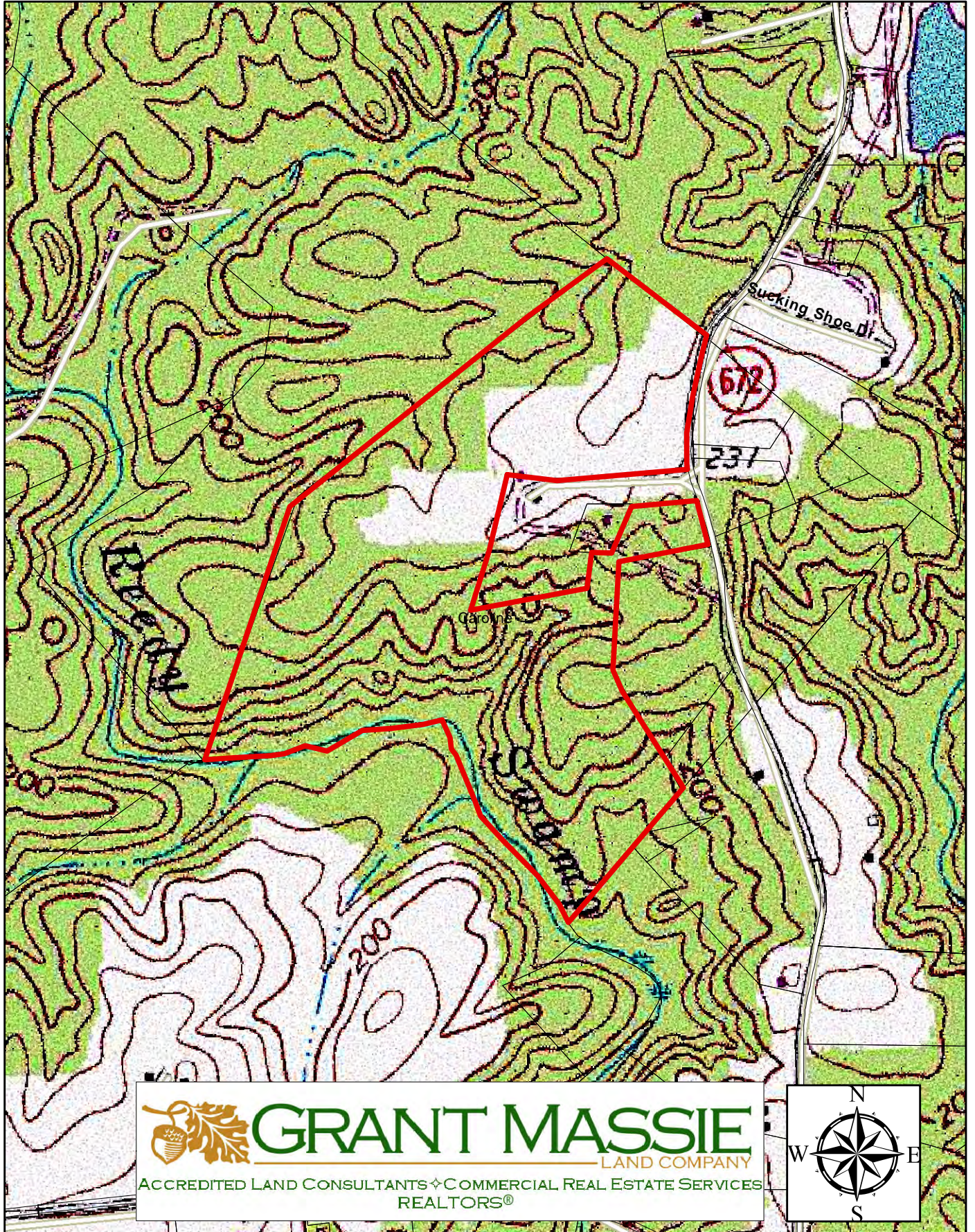
# TAX MAP



# AERIAL PHOTO

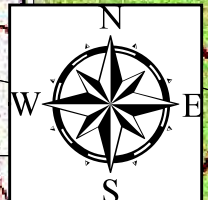


# TOPOGRAPHY MAP

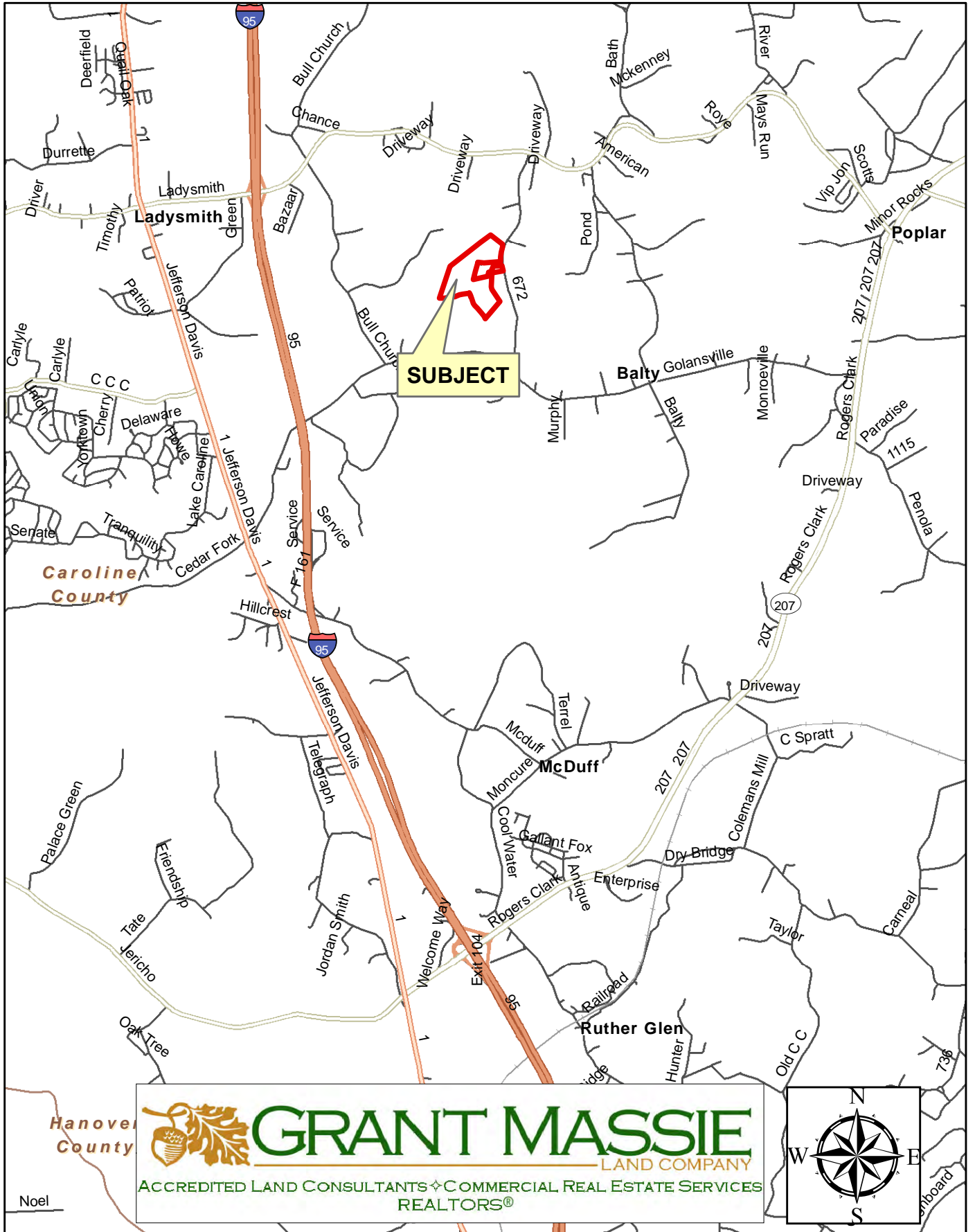


**GRANT MASSIE**  
LAND COMPANY

ACCREDITED LAND CONSULTANTS ♦ COMMERCIAL REAL ESTATE SERVICES  
REALTORS®



# LOCATION MAP



 **GRANT MASSIE**  
LAND COMPANY  
ACCREDITED LAND CONSULTANTS ♦ COMMERCIAL REAL ESTATE SERVICES  
REALTORS®

