

\$640,000
(\$1,600/ac)

Ross Properties, LLC "I-20 Tract"

400 (+/-) Acres For Sale
Located on Hwy 43
Pelahatchie, MS



- Great recreational and timber investment tract!
- Contains pine plantation approximately 18 years old as well as mature hardwood timber!
- 4-wheeler trails, beautiful Pelahatchie Creek, & only minutes from Brandon, MS!
- [more pictures at HairstonRealEstate.com](http://HairstonRealEstate.com)



For more information, please contact:

Buddy Hairston

601-854-7001 office

601-672-6290 cell

hairstonforestry@bellsouth.net

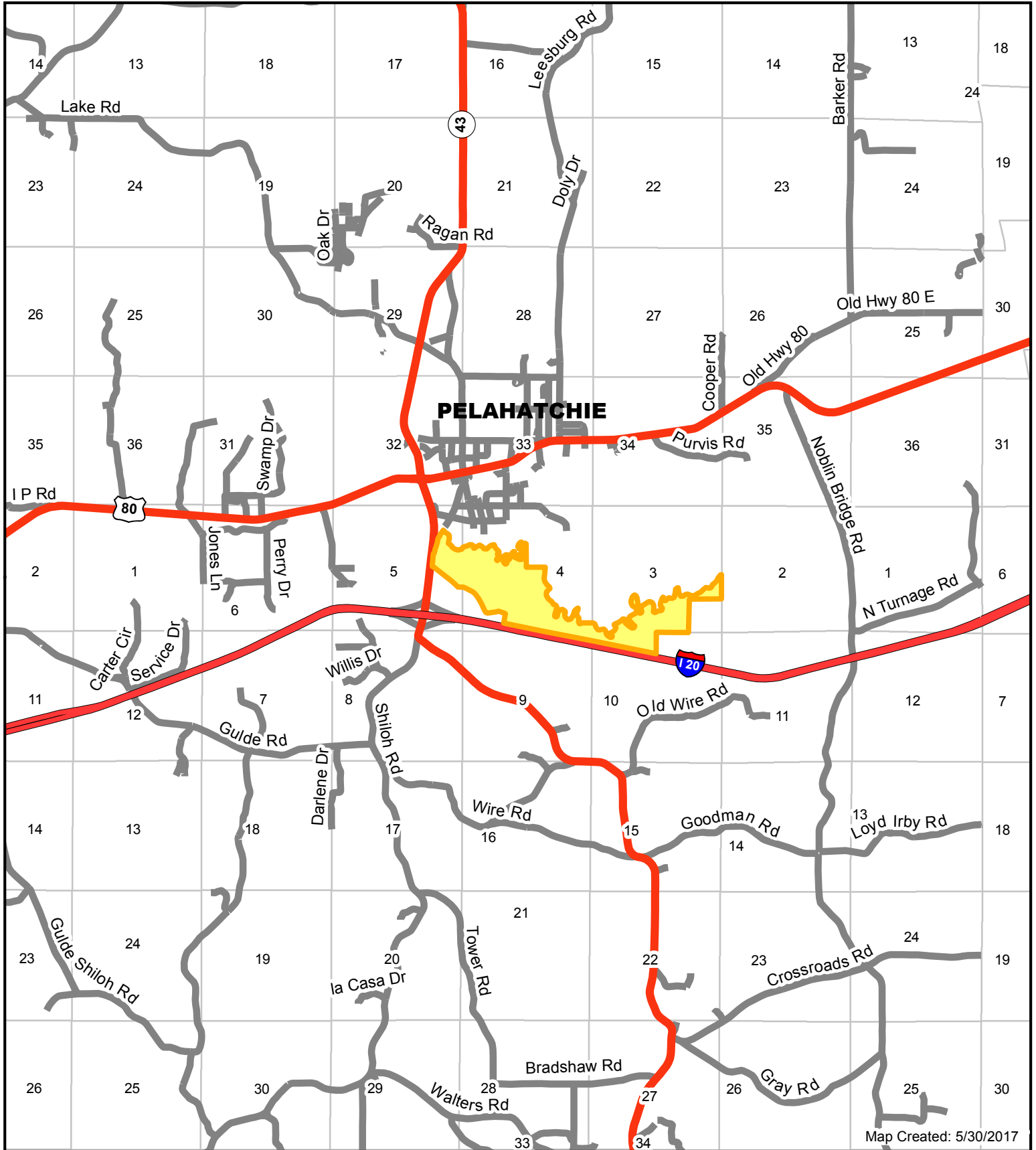
TERRY H. HAIRSTON, BROKER

128 Whippoorwill Rd. Brandon, MS 39042 601-724-2145

Ross Properties LLC - I20 Tract

Approx. 400 acres - T5N, R5E, Rankin County, MS

Location Map



Map Created: 5/30/2017

HAIRSTON



FORESTRY
CONSULTANTS

www.HairstonForestry.com



Subject Tract

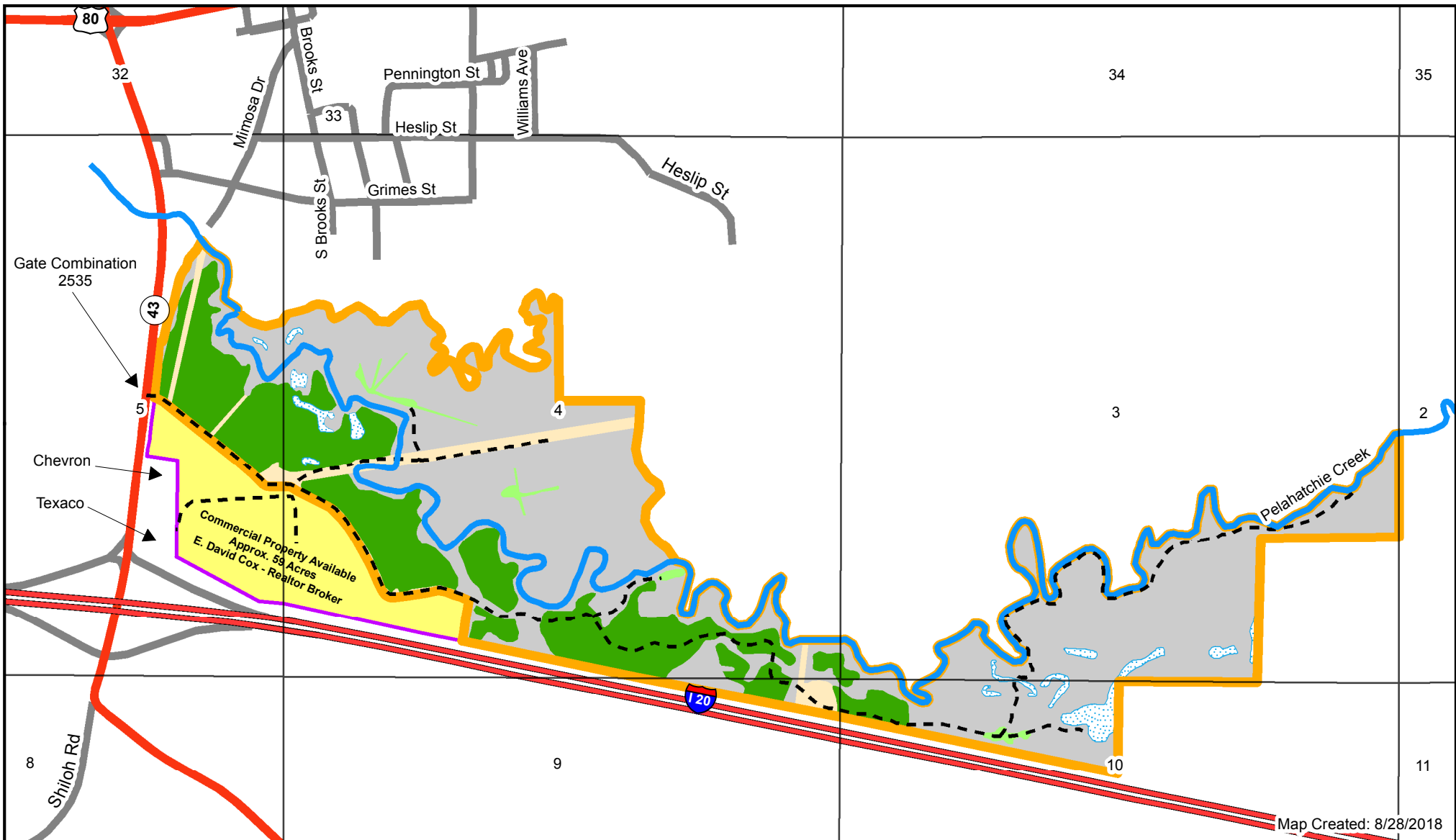


1 inch = 5,280 feet

Ross Properties LLC - I-20 Property (Approx. 400 ac)

T5N, R5E, Rankin County, MS

Timber Stand Map



- Road/Trail
- Pelahatchie Creek
- ▭ Tract Boundary
- ▭ Commercial Property Available
- ▭ Uneven Aged Natural Hardwood - Approx. 280 ac
- ▭ Pine Plantation (est. 2002) - Approx. 94 ac
- ▭ Food Plot
- ▭ Open
- ▭ Slough



www.HairstonForestry.com

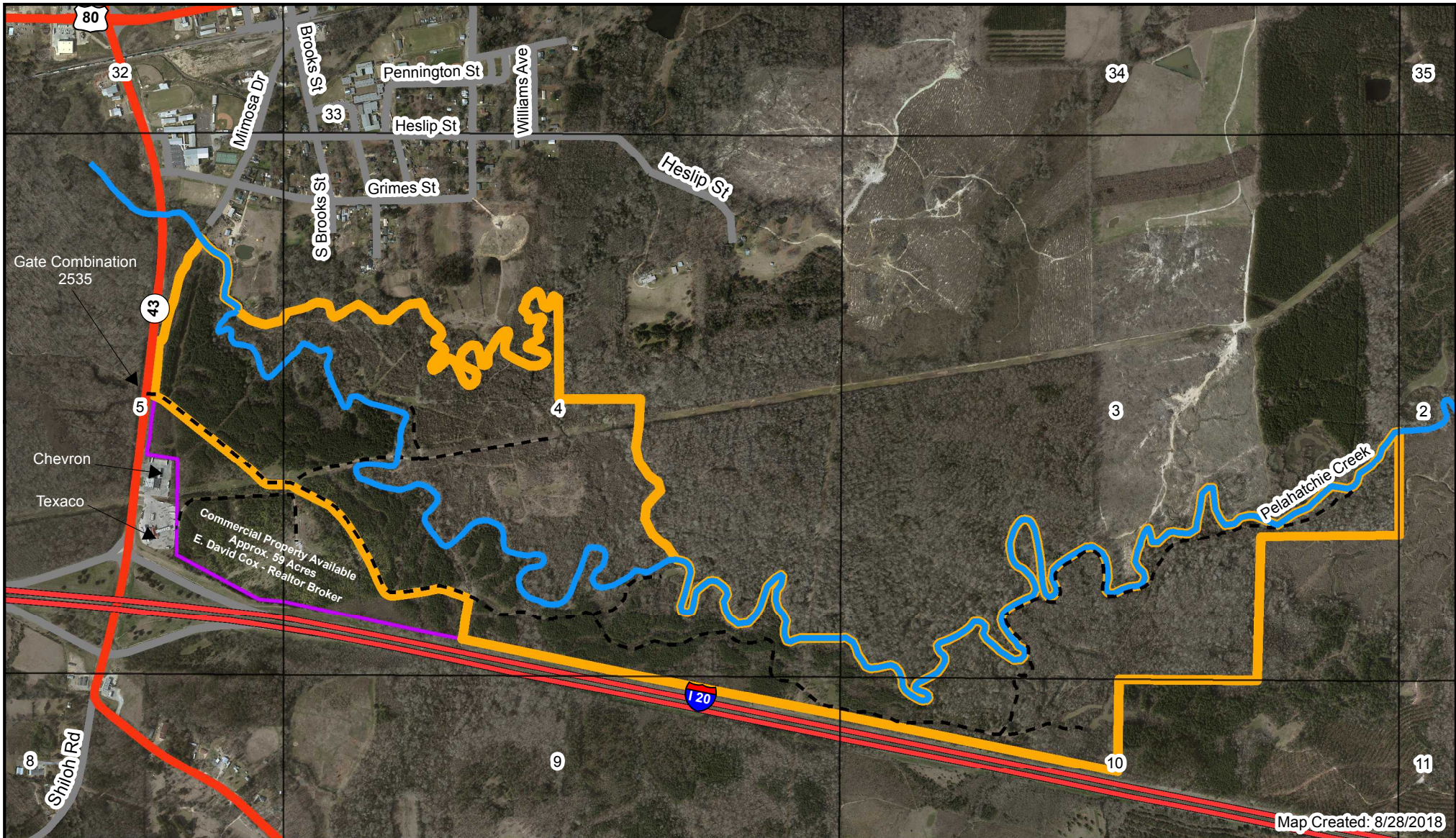


1 inch = 1,320 feet

Ross Properties LLC - I-20 Property (Approx. 400 ac)

T5N, R5E, Rankin County, MS

2013 Leaf Off Aerial



www.HairstonForestry.com

- Road/Trail
- Pelahatchie Creek
- ▭ Tract Boundary
- ▭ Commercial Property Available

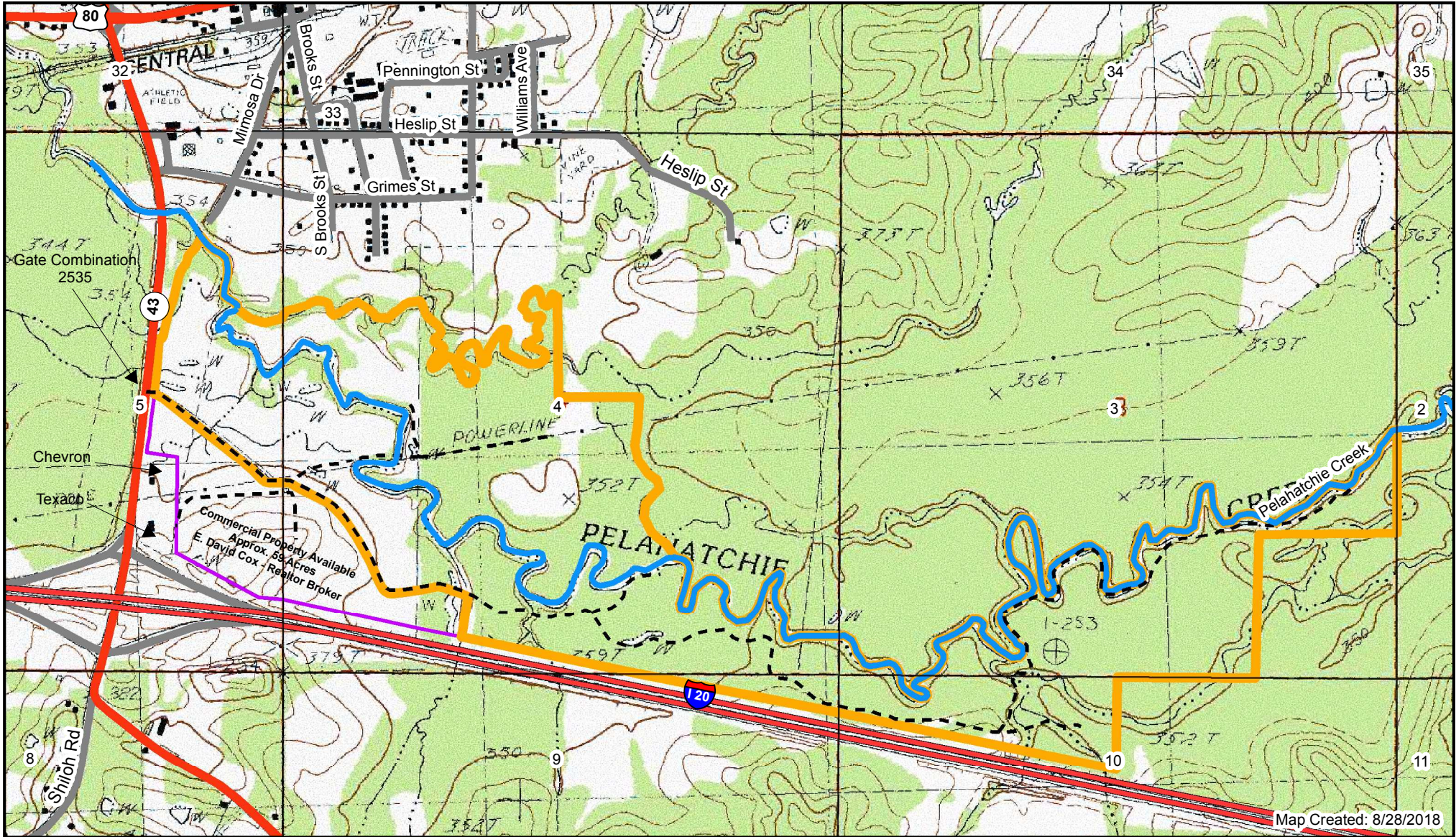


1 inch = 1,320 feet

Ross Properties LLC - I-20 Property (Approx. 400 ac)

T5N, R5E, Rankin County, MS

Topo Map



www.HairstonForestry.com

- Road/Trail
- Pelahatchie Creek
- ▭ Tract Boundary
- ▭ Commercial Property Available



1 inch = 1,320 feet