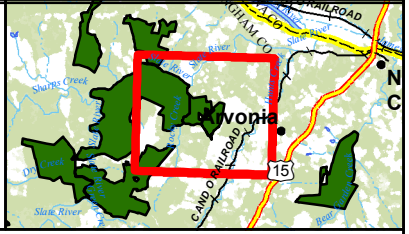
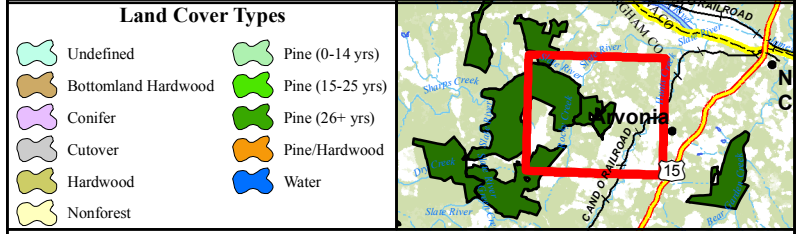


Note: Stands listed below may include multi-part stands. In cases where a single tract requires multiple maps, acreages listed may include shapes not visible on this map.

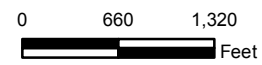
Stand	Description	Year Origin	Thin Year	Acres
10002	Planted Upland Loblolly Pine	1980		55.57
10005	Planted Upland Loblolly Pine	1991	2009	63.97
10006	Planted Upland Loblolly Pine	2013		116.18
10007	Planted Upland Loblolly Pine	1978		11.86
50001	Natural Bottomland Mixed Hardwood	1975		53.14
90003	Road	0		0.99
90004	Utility	0		2

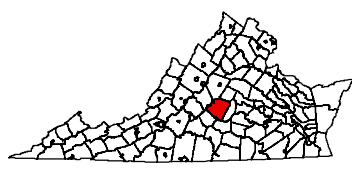
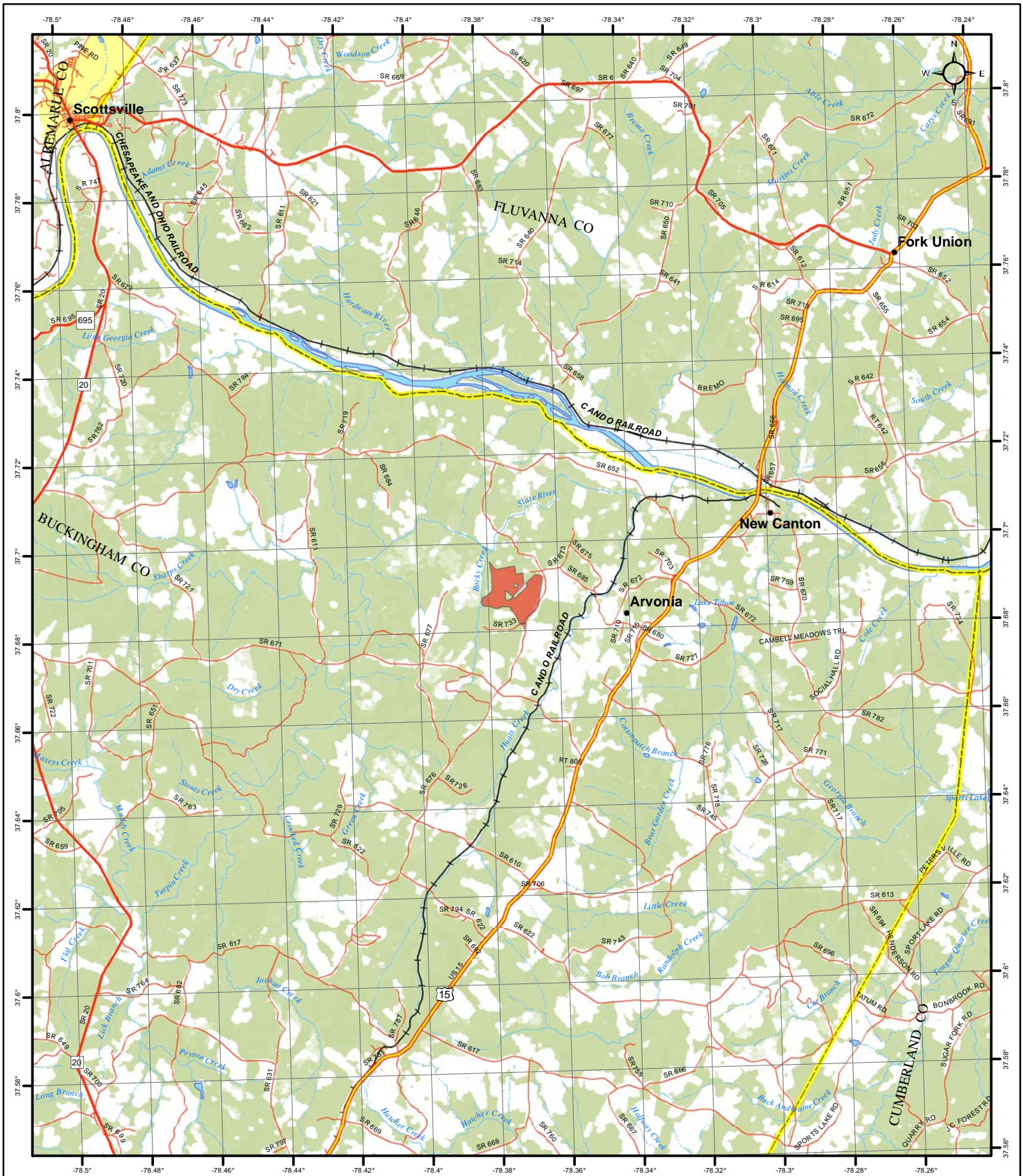


Timber Type Map

Client:	Valencia Tree, LLC		
Unit:	Monticello Forest, LLC		
Tract:	345 - Swink (Map 1 of 1)		
Tract Number:	011705	Tract Acres:	303.71
Tract Date:	6/20/2008	Stand Date:	4/5/2016
County:	Buckingham	State:	Virginia
Date Printed:	4/7/2016	Projection:	NAD 1983 UTM Zone 17N

Map Produced by F&W Forestry Services, Inc.





Valencia Tree, LLC
Tract# : 011705
345 - Swink Tract
Buckingham County, VA
303.71 Acres

Lat. 37.689, Long. -78.373 (Tract Center)

Legend

- 4WD
- Local Paved or Unknown
- Secondary State or County Hwy
- Primary US or State Hwy
- Primary Limited Access or Interstate
- Counties

F&W Forestry Services, Inc.
Map Date : 4/8/2013

