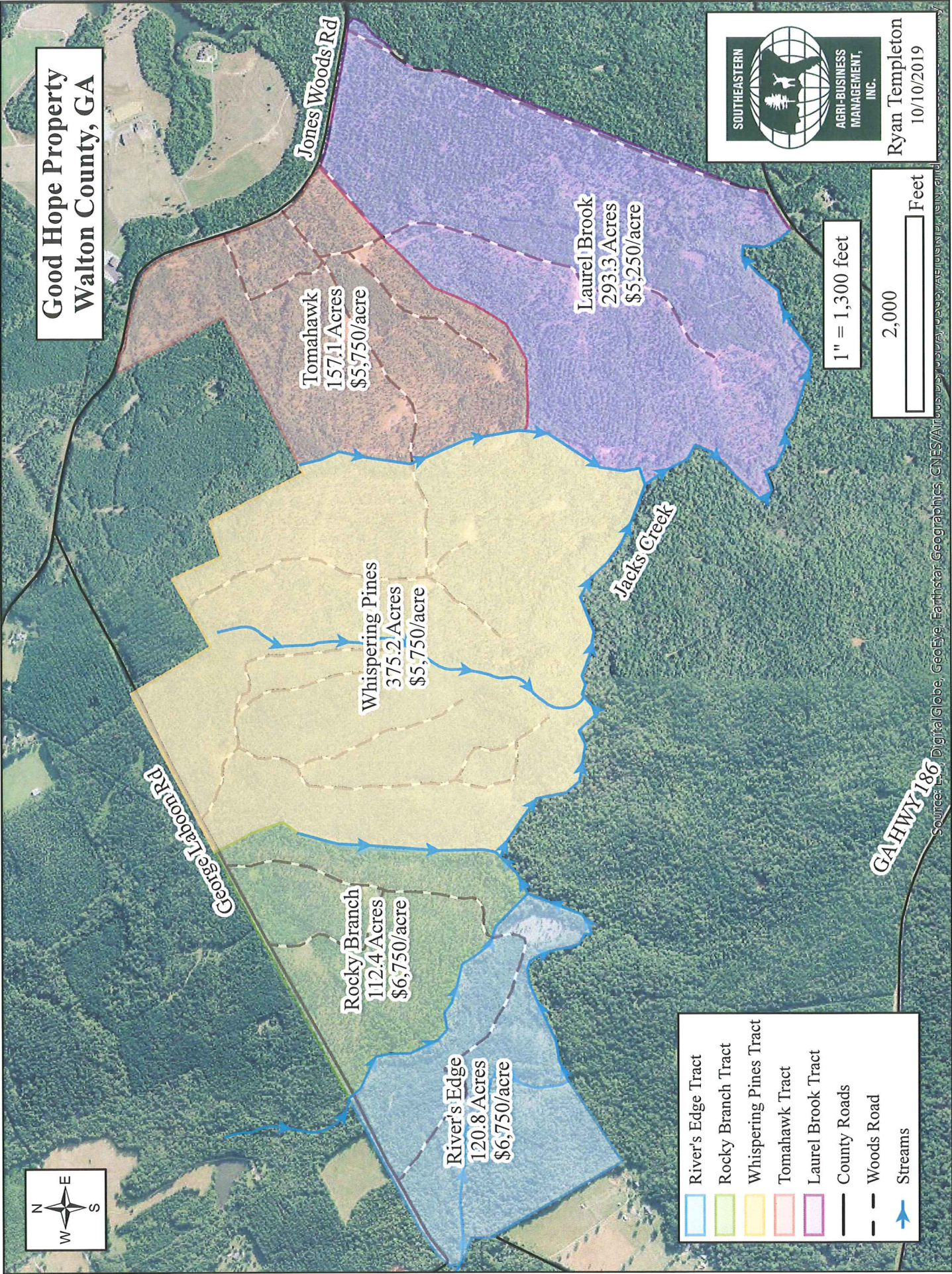


**Good Hope Property
Walton County, GA**



**SOUTHEASTERN
AGRI-BUSINESS
MANAGEMENT,
INC.**

**Ryan Templeton
10/10/2019**



Tomahawk
157.1 Acres
\$5,750/acre

Laurel Brook
293.3 Acres
\$5,250/acre




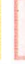




Whispering Pines
375.2 Acres
\$5,750/acre

Rocky Branch
112.4 Acres
\$6,750/acre

River's Edge
120.8 Acres
\$6,750/acre

1" = 1,300 feet



-  River's Edge Tract
-  Rocky Branch Tract
-  Whispering Pines Tract
-  Tomahawk Tract
-  Laurel Brook Tract
-  County Roads
-  Woods Road
-  Streams



Source: DigitalGlobe, GeoEye, Earthstar Geographics, CNES/Airbus DS, USDA, AeroGRID, IGN, and the GIS User Community