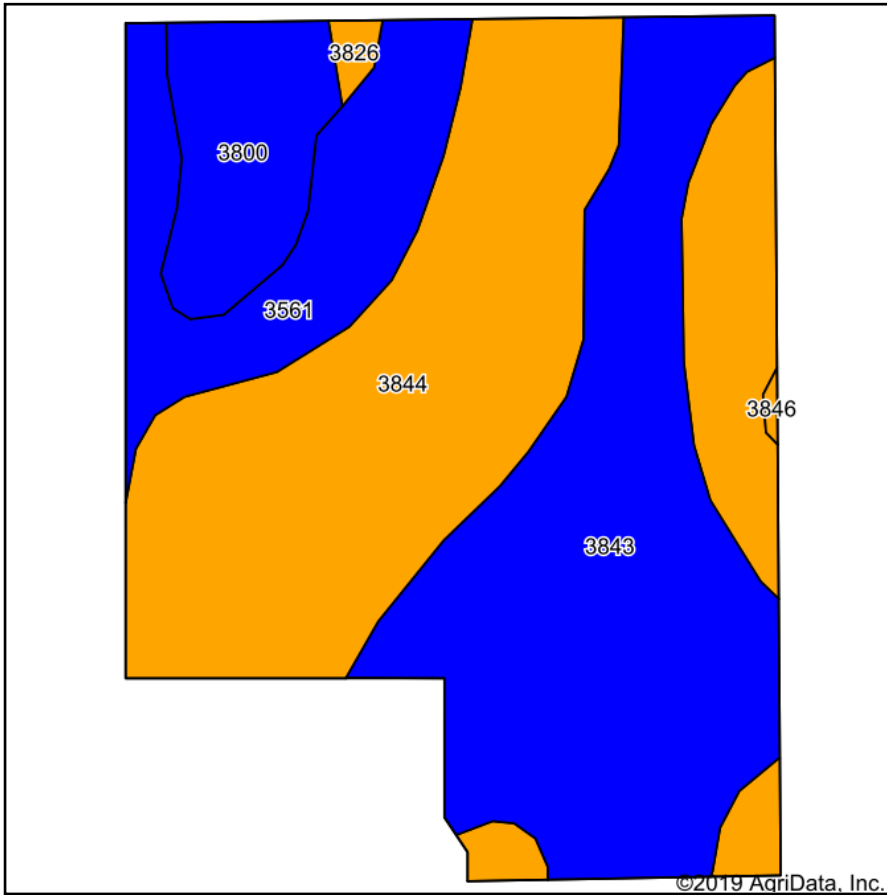
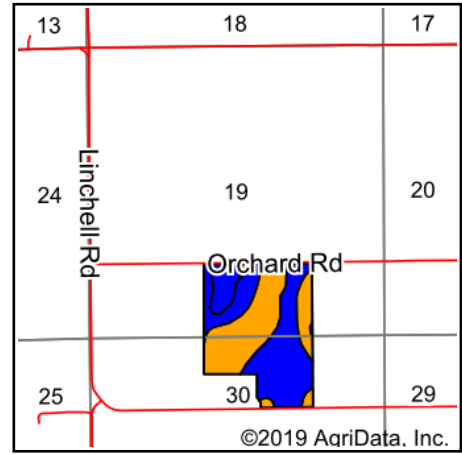


# Soils Map



Soils data provided by USDA and NRCS.



State: **Kansas**  
 County: **Ottawa**  
 Location: **19-10S-5W**  
 Township: **Fountain**  
 Acres: **105**  
 Date: **10/24/2019**



ANTRIM-PIPER  
WENGER REALTORS®

Maps Provided By:



© AgriData, Inc. 2019

www.AgriDataInc.com



Area Symbol: KS143. Soil Area Version: 16							
Code	Soil Description	Acres	Percent of field	Non-Irr Class Legend	Non-Irr Class *c	Irr Class *c	*n NCCPI Soybeans
3844	Geary silt loam, 3 to 7 percent slopes	45.00	42.9%		IIIe	IIIe	72
3843	Geary silt loam, 1 to 3 percent slopes	37.42	35.6%		IIe	IIe	72
3561	Hobbs silt loam, occasionally flooded	13.35	12.7%		IIw	IIw	76
3800	Crete silt loam, 0 to 1 percent slopes, loess plains and breaks	8.45	8.0%		IIIs	IIIs	64
3826	Crete silt loam, 3 to 7 percent slopes	0.62	0.6%		IIIe	IIIe	62
3846	Geary silty clay loam, 3 to 7 percent slopes, eroded	0.16	0.2%		IIIe	IIIe	58
<b>Weighted Average</b>							<b>*n 71.8</b>

\*n: The aggregation method is "Weighted Average using major components"

\*c: Using Capabilities Class Dominant Condition Aggregation Method

Soils data provided by USDA and NRCS.