

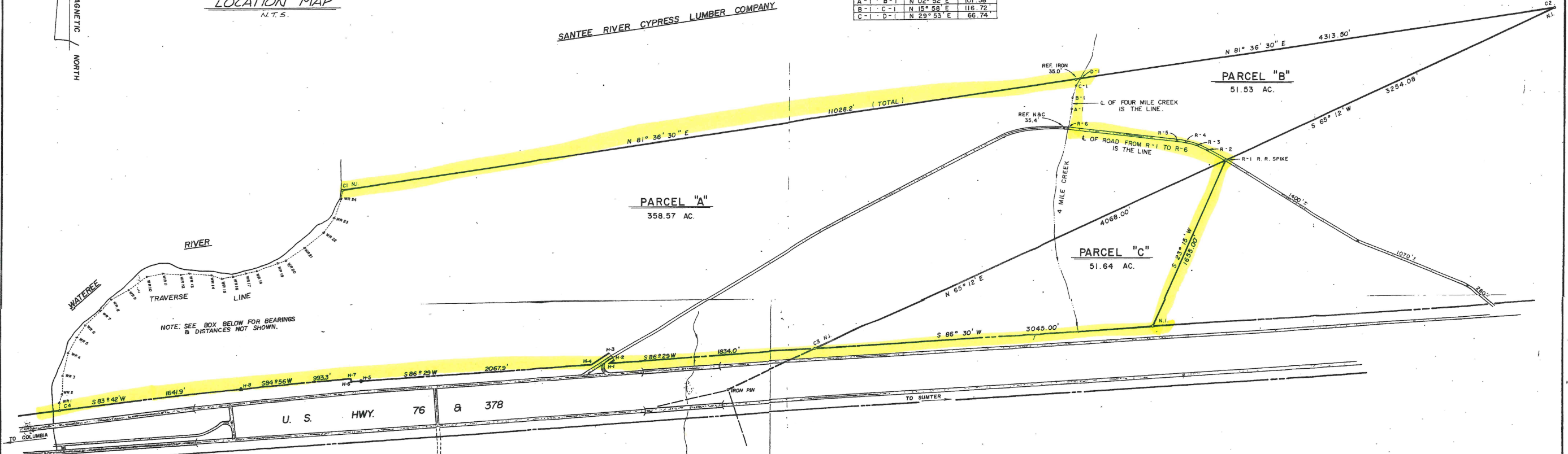
ROAD C POINTS		
R-1 - R-2	N 60° 14' W	183.63'
R-2 - R-3	N 64° 46' W	100.00'
R-3 - R-4	N 71° 30' W	103.86'
R-4 - R-5	N 79° 44' W	85.00'
R-5 - R-6	N 83° 41' W	989.10'

CREEK C POINTS		
R-6 - A-1	N 107° 13' E	176.30'
A-1 - B-1	N 02° 52' E	101.58'
B-1 - C-1	N 15° 58' E	116.72'
C-1 - D-1	N 29° 53' E	66.74'

Handwritten notes:
 This plat was prepared by the undersigned on the basis of a survey conducted by the undersigned on the 15th day of July, 1976.
 The survey was conducted in accordance with the provisions of the Act of the General Assembly of the State of South Carolina, passed on the 15th day of July, 1976, and the Act of the General Assembly of the State of South Carolina, passed on the 15th day of July, 1976.
 The survey was conducted in accordance with the provisions of the Act of the General Assembly of the State of South Carolina, passed on the 15th day of July, 1976, and the Act of the General Assembly of the State of South Carolina, passed on the 15th day of July, 1976.

RECORDED
 487
 SUMTER COUNTY, S.C.

SANTEE RIVER CYPRESS LUMBER COMPANY



NOTE: SEE BOX BELOW FOR BEARINGS & DISTANCES NOT SHOWN.

NOTE: PARCEL "B", IS TO BE CONVEYED TO WATEREE - SANTEE LIMITED PARTNERSHIP.
 PARCEL "C", IS TO BE CONVEYED TO SONOCO PRODUCTS.

CERTIFICATION: I HEREBY CERTIFY THIS TO BE A PLAT OF TRUE AND CORRECT SURVEY MADE ON THE GROUND AND THE RATIO OF PRECISION OF THE FIELD SURVEY IS 1/5000 AS SHOWN HEREON AND THE AREA WAS DETERMINED BY D.M.D. METHOD OF AREA CALCULATION.

REVISED: 10/19/82 TO ADD NOTE AND DELETE ACREAGE.
 3/15/82 TO DIVIDE INTO PARCELS A & B AND TO ADD PARCEL "C".

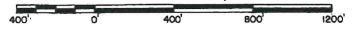
C1 - C2	N 81° 36' E	11028.2'
C2 - C3	S 85° 12' W	7300.8'
C3 - H1	S 86° 29' W	18340.0'
H1 - H2	N 56° 29' E	30.7'
H2 - H3	N 33° 31' W	80.0'
H3 - H4	S 56° 29' W	1693.3'
H4 - H5	S 86° 29' W	20679.9'
H5 - H6	S 86° 20' W	125.8'
H6 - H7	N 03° 50' W	25.0'
H7 - H8	S 84° 56' W	993.3'
H8 - C4	S 83° 42' W	16419.9'
C4 - WR1	N 01° 33' W	59.3'
WR1 - WR2	N 17° 40' E	83.5'
WR2 - WR3	N 02° 12' E	165.0'
WR3 - WR4	N 12° 13' E	215.2'
WR4 - WR5	N 31° 14' E	158.7'
WR5 - WR6	N 34° 08' E	135.5'
WR6 - WR7	N 46° 38' E	192.6'
WR7 - WR8	N 43° 14' E	132.8'
WR8 - WR9	N 57° 31' E	172.9'
WR9 - WR10	N 52° 59' E	200.0'
WR10 - WR11	N 80° 15' E	150.2'
WR11 - WR12	S 85° 32' E	166.1'
WR12 - WR13	N 79° 51' E	81.2'
WR13 - WR14	S 84° 15' E	195.1'
WR14 - WR15	S 70° 55' E	99.8'
WR15 - WR16	N 78° 51' E	100.1'
WR16 - WR17	N 74° 56' E	118.4'
WR17 - WR18	N 81° 54' E	104.0'
WR18 - WR19	N 68° 10' E	209.8'
WR19 - WR20	N 73° 54' E	88.6'
WR20 - WR21	N 55° 47' E	200.2'
WR21 - WR22	N 51° 07' E	235.7'
WR22 - WR23	N 35° 11' E	150.8'
WR23 - WR24	N 19° 32' E	181.1'
WR24 - C1	N 8° 18' E	75.5'

PLAT PREPARED FOR

SONOCO PRODUCTS

IN SUMTER COUNTY, SOUTH CAROLINA
 STATEBURG TOWNSHIP

SCALE 1" = 400'



APRIL 29, 1976

- (1) PLAT FOR T. STARK HOUSE, BY D.J. HOLT, DATED AUG. 1935.
- (2) PLAT FOR JESSE HOUSE BY S.G. HENRY DATED AUG. 1899 & RECORDED IN PLAT BOOK Y-9, PG. 719.
- (3) PLAT BY EMERSON RECORDED IN DEED BOOK 000, PAGE 240.
- (4) PLANS BY S.C. HWY. DEPT.
- (5) PLAT FOR EDWIN B. GUY BY ASSOC. ENG. & SUR. DATED DEC. 24, 74.
- (6) TAX MAP - XK3, BLOCK A, PARCEL 130.



ASSOCIATED ENGINEERS & SURVEYORS, INC.

Handwritten signature: William A. Whitworth