

Hampshire Parcel Viewer

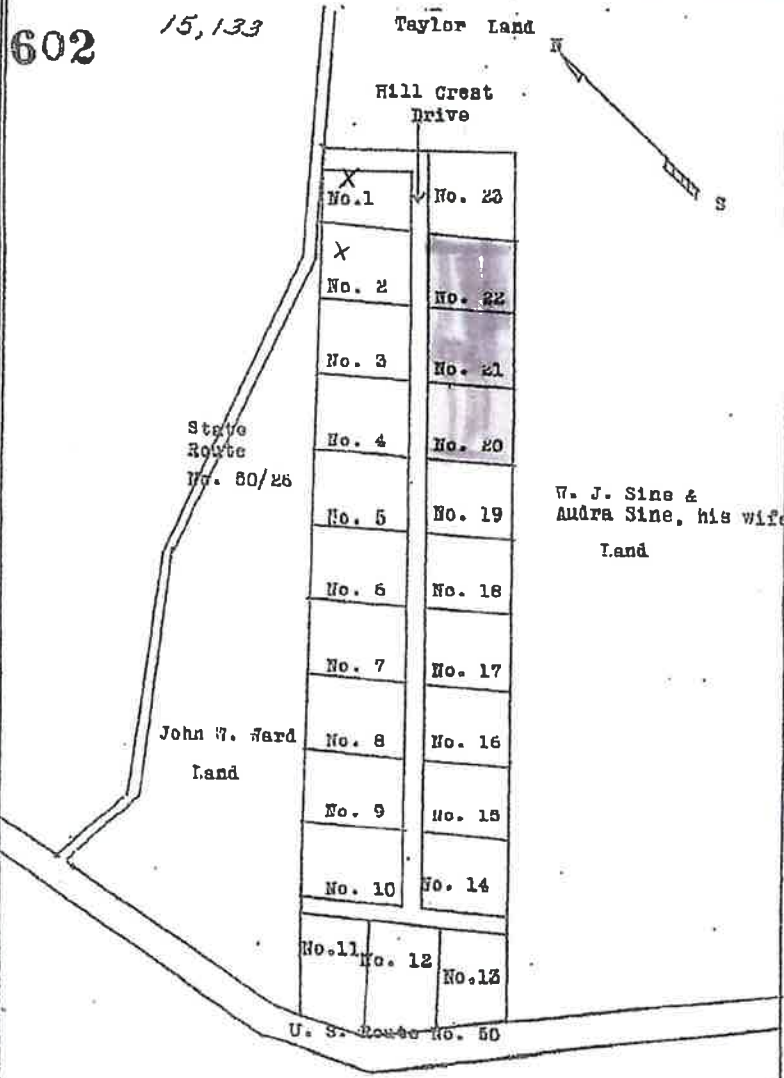


60ft

-78.172 39.192 Degrees

App State
Click to restore the map extent and layer visibility where you left off.

*Assessor's Office picked up 1-14-69 Returned 1-14-69
Restrictions: See Road Book 172 Page 389*



Hampshire Heights

W. J. & Audra Sine land.
 Plat showing Hampshire Heights Sub-division
 Scale 200' equals one inch
 The above sub-division is located about .5 of a mile west of
 the West Virginia-Virginia State line in Bloomery District,
 Hampshire County, West Virginia.
 Survey and plat made by Vernon G. Whitacre, Surveyor

STATE OF WEST VIRGINIA, County of Hampshire, to-wit:
 Be it remembered that on the 15th day of December, 1966, at 9:33 A.M.,
 this Plat was presented in the Clerk's Office of the County Court of said County and
 with the certificate thereto annexed, admitted to record.
 Attest: Thomas C. Keller Clerk
 County Court, Hampshire County, W. Va.