

96 ac ALLEN CO

\$9,500/AC

95.82 Acres
Section 16, American Twp.,
Diller Rd.,
Elida, OH



Apx. 95.82 acres, Section 16, American Twp. Apx. 92.72 ac tillable.

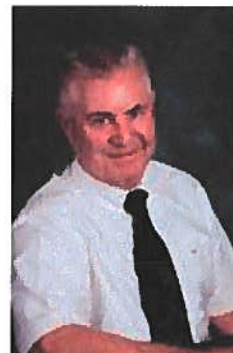
Frontage on Diller Rd. & Sunnydale St. Soils consist of Blount,
Pewamo, & Glynwood. City water & sewer.

Great development potential!

Annual Taxes-\$3,901.62

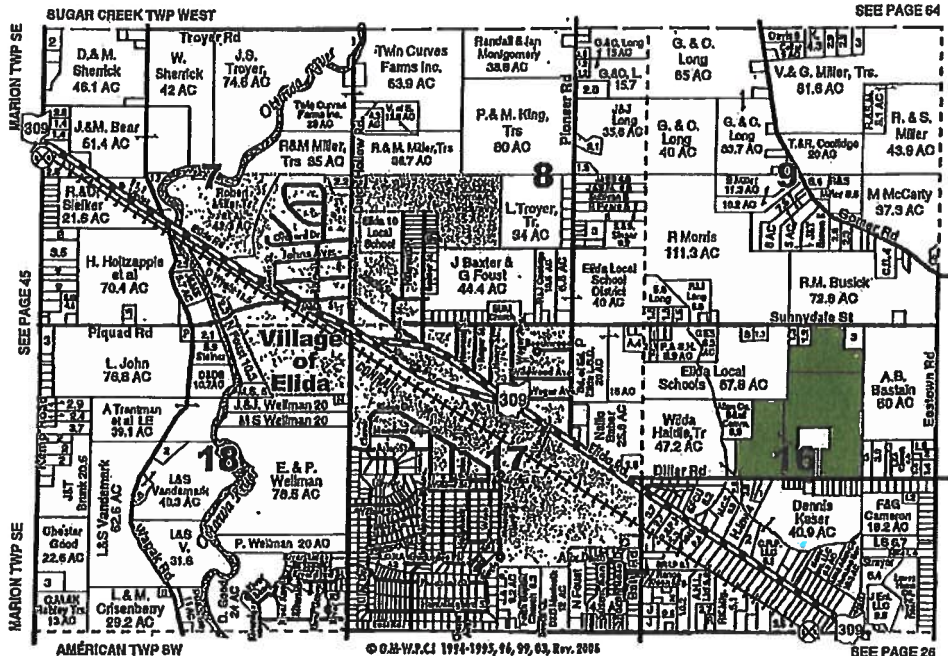
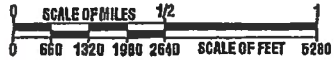
Elida SD

Ron Spencer
419-230-1111



AMERICAN TWP, -- NW

ALLEN COUNTY, OHIO T.39-R.0E



SEE PAGE 45 SEE PAGE 64
MARION TWP SE SEE PAGE 25
AMERICAN TWP SW SEE PAGE 26
© D.H.W.C.I. 1974-1995, 96, 97, 03, Rev. 2005

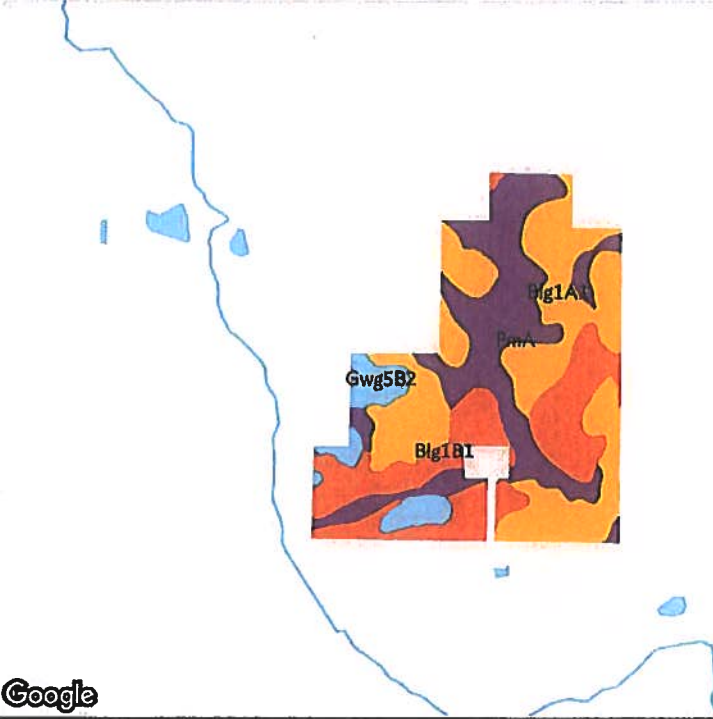
3 fields, 96 acres in Allen County, OH TOWNSHIP/SECTION 3S 6E - 16

AVG NCCPI

COUNTY AVG

58.1

59.9



QUALITY 46 █ █ 85

Map data ©2018 Google

Source: NRCS Soil Survey

All fields

96 ac

SOIL CODE	SOIL DESCRIPTION	ACRES	PERCENTAGE OF FIELD	SOIL CLASS	NCCPI
Blg1A1	Blount silt loam, ground moraine, 0 to 2 percent slopes	35.88	37.5%	2	54.3
PmA	Pewamo silty clay loam, 0 to 1 percent slopes	28.61	29.9%	2	75.6
Blg1B1	Blount silt loam, ground moraine, 2 to 4 percent slopes	24.40	25.5%	2	50.8
Gwg5B2	Glywood clay loam, ground moraine, 2 to 6 percent slopes, eroded	6.76	7.1%	2	29.9
95.64					58.1

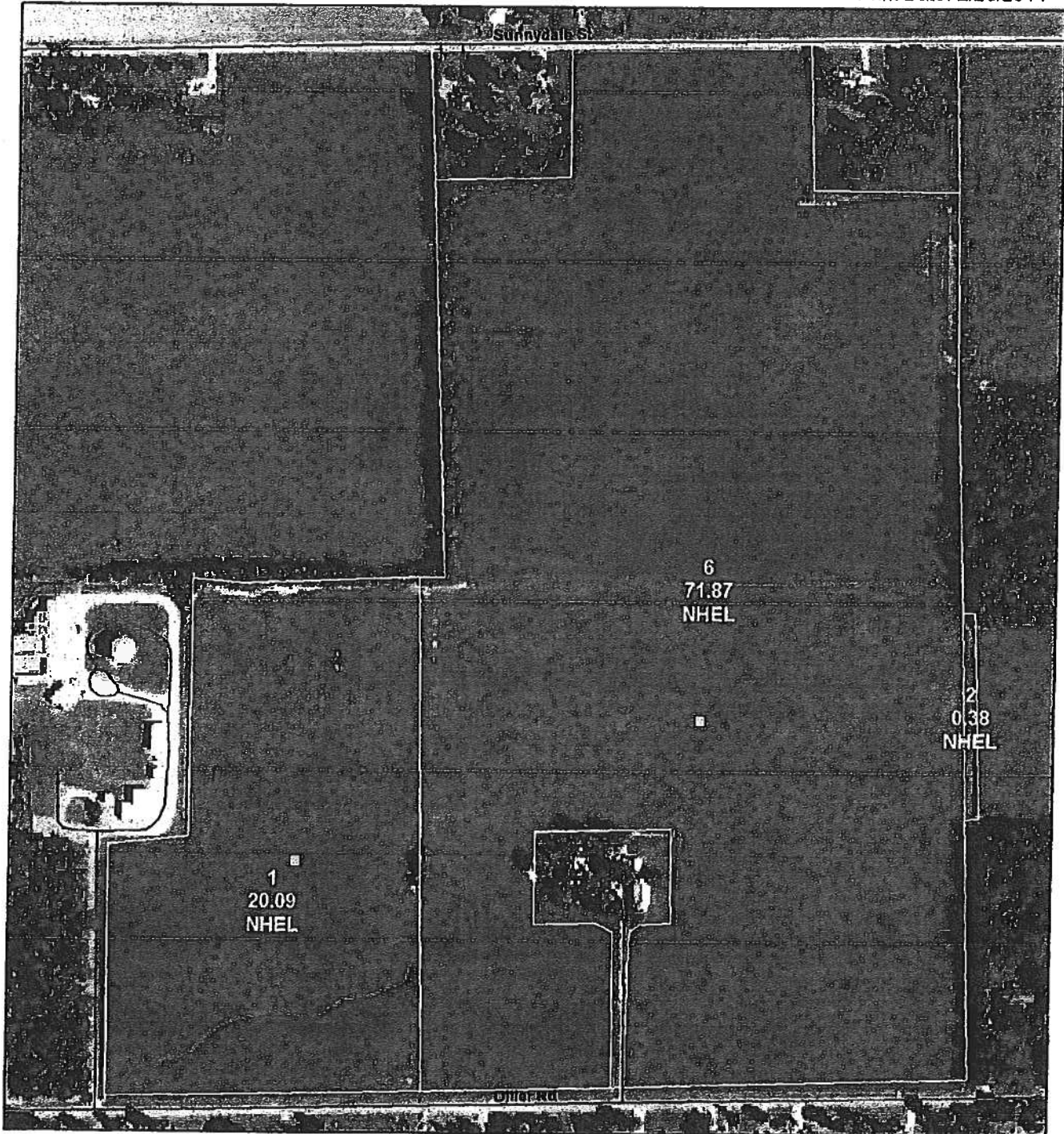


Allen County FSA
 1604 E. Fourth St, Suite A
 Lima, OH 45804
 Phone: 419-223-0010
 Fax: 419-224-3415

Crop Year

Farm: 7672
 Tract: 13310

Print Date: 2/20/2014



1 inch = 359 feet

All of the below are true unless otherwise indicated

All crops=Non-Irrigated
 All crops used for grain
 Wheat=SRW
 Corn=Yellow
 Soybeans=COM

Legend

- CLU Boundary
- Wetland Determination Identifiers**
- Restricted Use
- Limited Restrictions
- Exempt from Conservation Compliance Provisions
- HEL Highly Erodible Land Determination
- NHEL Not Highly Erodible Land Determination
- UHEL Undetermined Highly Erodible Land Determination
- CRP Conservation Reserve Program

USDA FSA maps are for FSA Program administration only. This map does not represent a legal survey or reflect actual ownership, rather it depicts the information provided directly from the producer and/or the 2013 ortho rectified imagery for Ohio. The producer accepts the data 'as is' and assumes all risks associated with its use. The USDA Farm Service Agency assumes no responsibility for actual or consequential damage incurred as a result of any user's reliance on this data outside of FSA Programs. Wetland identifiers do not represent the size, shape or specific determination of the area. Refer to your original determination (CPA-026 and attached maps) for exact wetland boundaries and determinations contact NRCS.