

CRP Map

Date: 5/30/2012

Customer(s): TRACY JONES
District: WABAUNSEE COUNTY CONSERVATION DISTRICT
Approximate Acres: 32.3

Field Office: ALMA SERVICE CENTER
Agency: USDA/NRCS
Assisted By: Lee Heier
State and County: KS, WABAUNSEE



Legend

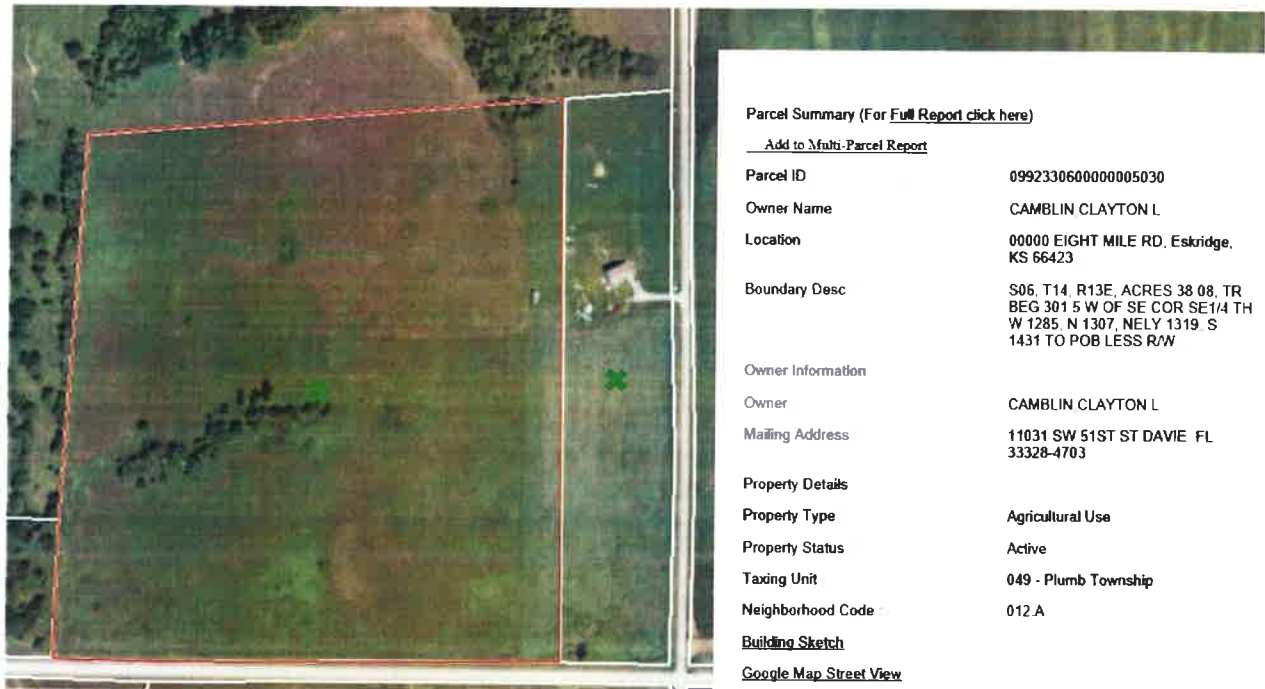
- Consplan1
- plss_a_ks197
- Perennial
- Right Bank Perennial
- Left Bank Perennial
- Intermittent
- Shoreline Natural
- Shoreline Manmade
- Canal

SE4/SE4 6-14-13

FARM 3145 TRACT 2447



Wabaunsee Open-Records Appraiser website:



Clayton Camblin property is designated by the red line. The acreage to the east with the house on it has different owners and is not included. The current Wabaunsee Farm number 3145 tract 2447 includes both properties and needs to be split; therefore the FSA map is not included. The CRP map from NRCS is included showing the CRP boundary lines.

Conservation Reserve Program (CRP) contract is #10066 consisting of 32.27 acres. Contract period is from 10/01/2012 thru 9/30/2022. The conservation practice is CP-25, Rare and Declining Habitat Restoration (targeting wildlife). CRP is classified as HEL (highly erodible). Annual contract rental payment is \$2016 with payment occurring in October following the fiscal year end of September 30. Three payments remain for the years 2020, 2021, and 2022.

2.17 acres of field drainage/trees which is undesignated (UHHEL).

Approximately 3.0 acres previously certified as brome hayed designated as HEL farmland with 3 acres wheat base (strip along the entire east edge).