

FOR SALE

28 Acres MOL

**Pasture and Recreational Land
Reagan, Falls County, TX 76680**

\$110,000

For a virtual tour and investment offering go to: www.texasfarmandranchrealty.com



Bob Dube (Broker)

512-423-6670 (mobile) 254-803-5263 (LAND)

bob@texasfarmandranchrealty.com

www.texasfarmandranchrealty.com

**FOR
SALE**

28 Acres MOL Pasture and Recreational Land Reagan, Falls County, TX 76680

Property Highlights

Location – From Waco take Hwy 6 South for 31 miles. Exit to FM 413 and go Left through Reagan, TX on FM 413 for 7 Miles. Turn right on FM 2413 and go approximately 1,500 feet. Property is on the left and look for the Texas Farm and Ranch Realty sign. Located just 45 minutes from Waco, approximately 1 hour 45 minutes from Fort Worth, Texas, 1 hour 45 minutes from Austin and 2 hours 15 minutes from Houston.

Acres – 28 Acres MOL according to Falls County Appraisal District.

Improvements – The property is three sided fenced in barbed wire.

Water – Tri-County Water services the area and according to a conversation with them on October 20, 2020 there is an existing water line on the other side of the road from this property. A buyer will have to go to Tri-County to apply for a water meter and a hydraulic test. The test costs approximately \$300.00. If meter is approved the buyer will have to pay for boring and the meter. There is one pond on the property.

Electricity – There is not an electric meter on the property. TXU services the area.

Soil – There are various soil types that make up the property. Please refer to the USDA Soil Map located in this brochure for soil types and areas of flooding if any.

Minerals – Seller wishes to retain all owned minerals.

Topography – The land is partially flat with gently rolling areas.

Current Use – Privately owned and is used for hay production and recreation.

Ground Cover – The property is covered in native grasses with a lightly wooded area.

Easements – An abstract of title will need to be performed to determine any easements that may exist.

Showings - By appointment only. Buyers who are represented by an agent/broker must have their agent/broker actively involved and present at all showings.

Presented At - \$110,000 or \$3,929 per acre

Texas Farm and Ranch Realty dba Dube's Commercial, Inc., does not make any representations or warranties expressed or implied as to the accuracy of this information. All sources are deemed reliable.



Bob Dube (Broker) **512-423-6670 (mobile) 254-803-5263 (LAND)**
bob@texasfarmandranchrealty.com www.texasfarmandranchrealty.com

**FOR
SALE**

28 Acres MOL

Pasture and Recreational Land

Reagan, Falls County, TX 76680

Property Pictures



Bob Dube (Broker)

512-423-6670 (mobile) 254-803-5263 (LAND)

bob@texasfarmandranchrealty.com

www.texasfarmandranchrealty.com

**FOR
SALE**

28 Acres MOL

Pasture and Recreational Land

Reagan, Falls County, TX 76680

Property Aerial View



Bob Dube (Broker)

512-423-6670 (mobile) 254-803-5263 (LAND)

bob@texasfarmandranchrealty.com

www.texasfarmandranchrealty.com

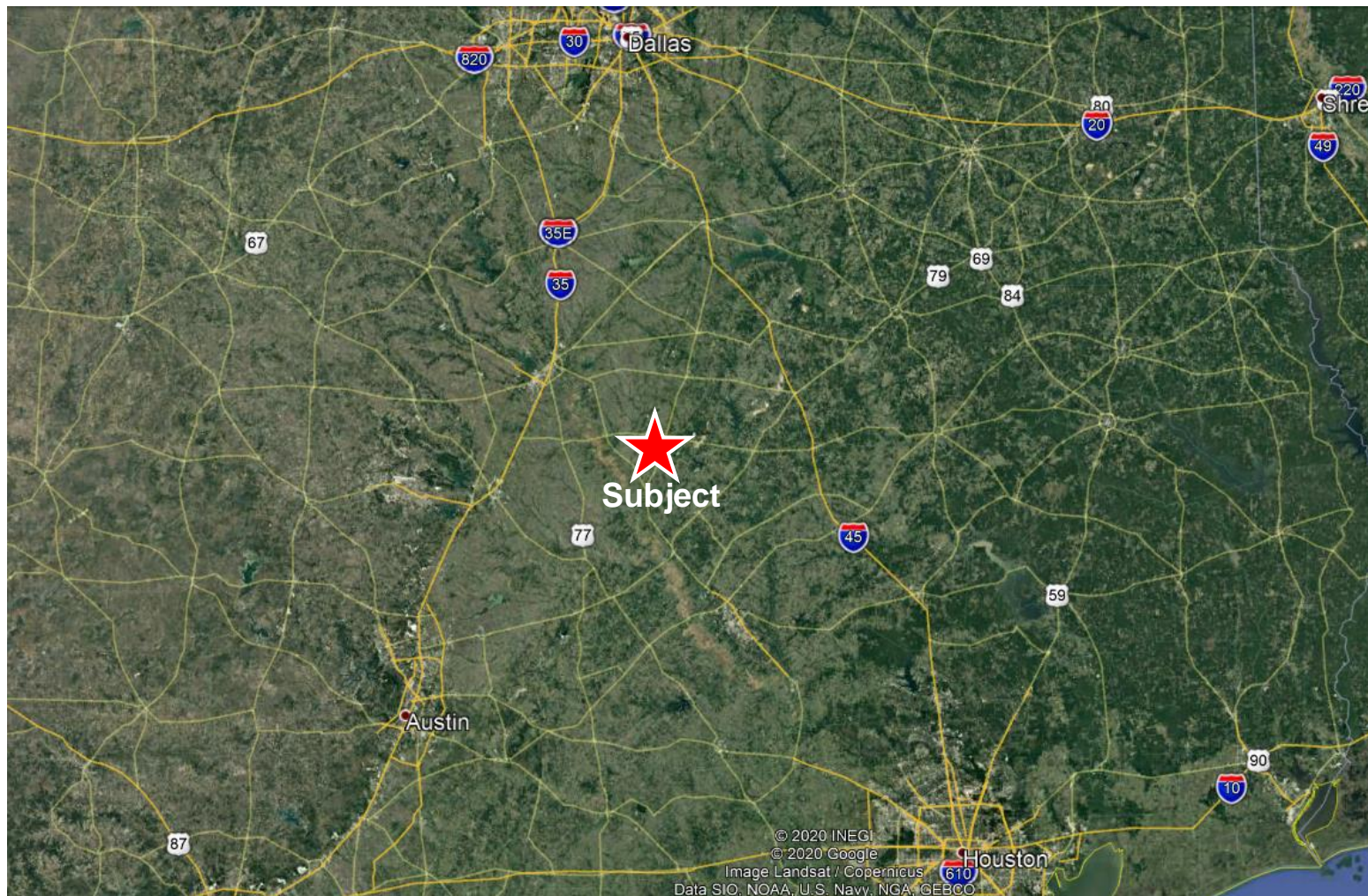
**FOR
SALE**

28 Acres MOL

Pasture and Recreational Land

Reagan, Falls County, TX 76680

Property Location Relative to DFW, Austin and Houston



Bob Dube (Broker)

512-423-6670 (mobile) 254-803-5263 (LAND)

bob@texasfarmandranchrealty.com

www.texasfarmandranchrealty.com

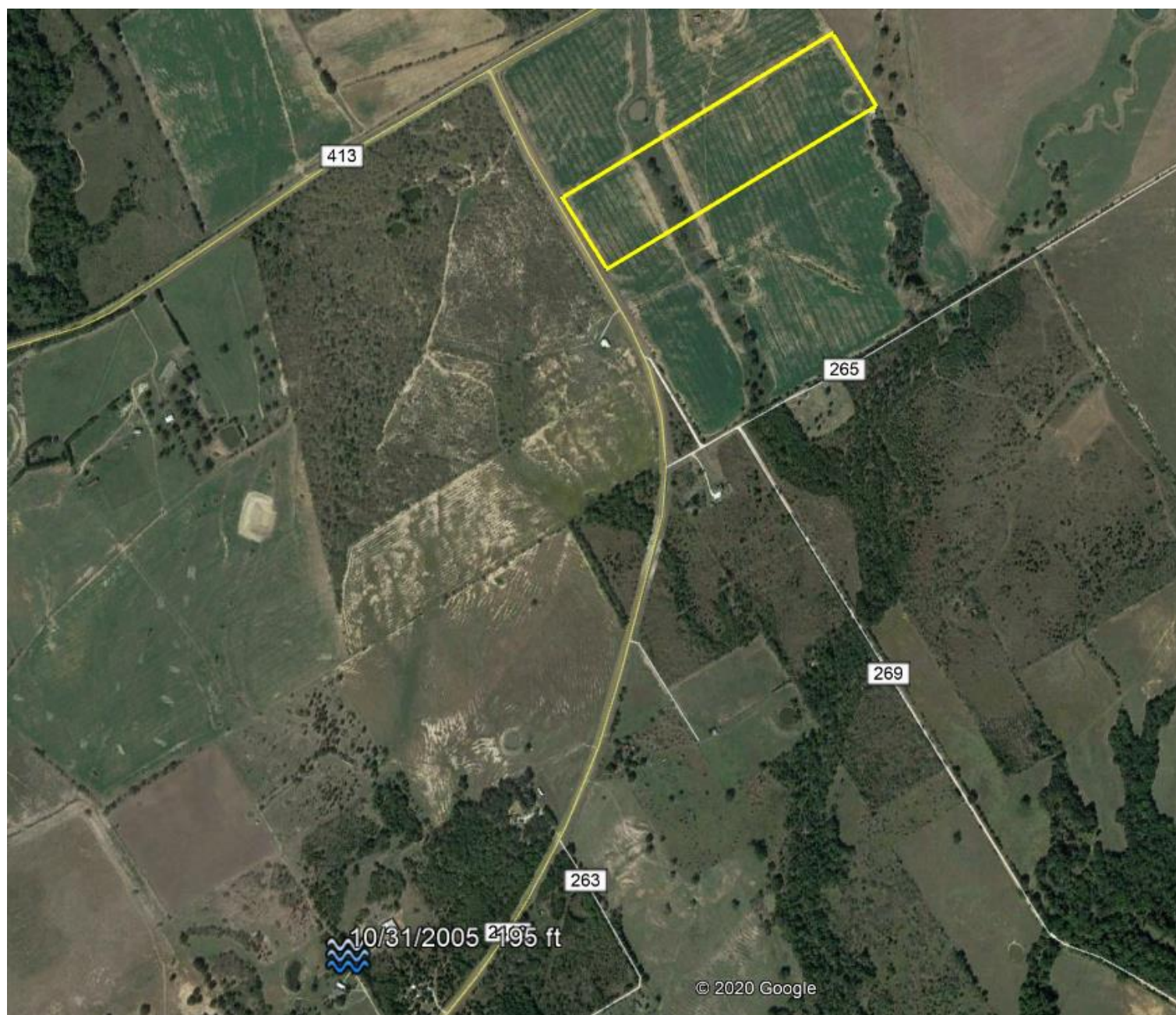
**FOR
SALE**

28 Acres MOL

Pasture and Recreational Land

Reagan, Falls County, TX 76680

Aerial of Water Well Nearest Property



**FOR
SALE**

28 Acres MOL

Pasture and Recreational Land

Reagan, Falls County, TX 76680

Soil Map Aerial



A DBA of Dube's Commercial, Inc. TREC# 484723

Bob Dube (Broker)

512-423-6670 (mobile) 254-803-5263 (LAND)

bob@texasfarmandranchrealty.com

www.texasfarmandranchrealty.com

**FOR
SALE**

28 Acres MOL

Pasture and Recreational Land

Reagan, Falls County, TX 76680

Soil Type Legend

Map Unit Symbol	Map Unit Name	Acres in AOI	Percent of AOI
20	Crockett fine sandy loam, 1 to 3 percent slopes	2.3	8.6%
21	Crockett fine sandy loam, 2 to 5 percent slopes, eroded	24.8	91.4%
Totals for Area of Interest		27.2	100.0%



Bob Dube (Broker)

512-423-6670 (mobile) 254-803-5263 (LAND)

bob@texasfarmandranchrealty.com

www.texasfarmandranchrealty.com

— "Stewards of Land" —
A DBA of Dube's Commercial, Inc. TREC# 484723

**FOR
SALE**

28 Acres MOL Pasture and Recreational Land Reagan, Falls County, TX 76680

Soil Type – 20

20—Crockett fine sandy loam, 1 to 3 percent slopes. This deep, moderately well drained, gently sloping soil is on uplands. Slopes are convex. Areas range from 35 to 400 acres in size.

This soil has a surface layer of brown, medium acid fine sandy loam about 9 inches thick. Between depths of 9 and 17 inches is mottled brownish yellow and red, medium acid clay that has grayish brown mottles. Below this layer, to a depth of 29 inches, is mottled yellow and grayish brown, medium acid clay, that has reddish yellow mottles. Between depths of 29 and 42 inches is brown, slightly acid clay that has brownish yellow mottles; and between depths of 42 and 53 inches is brownish yellow, neutral clay that has light brownish gray and reddish yellow mottles. Between depths of 53 and 73 inches is yellow, moderately alkaline sandy clay loam that has light brownish gray, white, and yellowish brown mottles. The underlying layer, to a depth of 80 inches, is mottled yellow light gray, and brownish yellow, moderately alkaline sandy clay loam.

Hard surface crusts and dense plowpans that form in cultivated areas make this soil difficult to work. Permeability is very slow, and available water capacity is high. The root zone is deep, but root penetration is slow and difficult in the underlying layers. Runoff is medium. The hazard of water erosion is moderate.

Included with this soil in mapping are a few intermingled areas of Normangee and Wilson soils and eroded Crockett soils. The included soils make up about 10 to 20 percent of this map unit.

This soil has medium potential for production of crops, but it is limited by low natural fertility and rapid loss of soil moisture during the summer. The major crops are small grain for winter grazing and grain sorghum. The major objectives in management are controlling erosion, maintaining fertility, and improving tilth. Terracing and growing high-residue crops and deep-rooted legumes help control erosion and maintain tilth.

This soil has high potential for pasture. It is well suited to coastal bermudagrass, common bermudagrass, and weeping lovegrass. Proper pasture management includes fertilization, weed control, and controlled grazing.

This soil has high potential for range. The climax plant community is a mixture of tall and mid grasses and an overstory of a few live oak, elm, and hackberry trees along streams and in occasional motts.

This soil has low potential for most urban uses. Its most restrictive limitations are shrinking and swelling with changes in moisture, corrosivity to uncoated steel, and slow percolation. The potential for recreation is medium. The very slow permeability is the most restrictive limitation for this use. Potential for openland and range-land wildlife habitat is medium. Capability subclass IIIe; Claypan Prairie range site.



Bob Dube (Broker)

512-423-6670 (mobile) 254-803-5263 (LAND)

bob@texasfarmandranchrealty.com

www.texasfarmandranchrealty.com

—Stewards of Land—
A DBA of Dube's Commercial, Inc. TREC# 484723

**FOR
SALE**

28 Acres MOL Pasture and Recreational Land Reagan, Falls County, TX 76680

Soil Type –21

21—Crockett fine sandy loam, 2 to 5 percent slopes, eroded. This deep, moderately well drained, gently sloping soil is on uplands. Soil areas are long, narrow bands that slope to natural drainageways. They range from 10 to 150 acres in size. Slopes are convex. Water erosion has removed part of the original surface layer. Many areas are dissected by gullies about 1 to 2 feet deep and 75 to 100 feet apart.

This soil has a surface layer of yellowish brown, medium acid fine sandy loam about 4 inches thick. Between depths of 4 and 12 inches is reddish brown, slightly acid clay that has reddish yellow and yellowish red mottles; and between depths of 12 and 29 inches is medium acid clay that is brown in the upper part and yellowish brown in the lower part. Mottles are brown and yellowish red. Between depths of 29 and 46 inches is brownish yellow, neutral sandy clay that has pinkish gray and light brownish gray mottles. The underlying layer, to a depth of 80 inches, is mottled brownish yellow and very pale brown, mildly alkaline sandy clay loam.

This soil is difficult to work. When dry, the surface becomes extremely hard. Permeability is very slow, and available water capacity is high. The root zone is deep, but root penetration is slow and difficult in the underlying layers. Runoff is medium. The hazard of water erosion is moderately severe.

Included with this soil in mapping are a few intermingled areas of Normangee and Wilson soils. The included soils make up about 10 to 20 percent of this map unit.

This soil has low potential for production of crops. The major crops are grain sorghum, cotton, and hay. The objectives in management are improving tilth, maintaining fertility, and controlling erosion. Terracing, growing crops that produce large amounts of residue, and growing deep-rooted legumes help to control erosion and maintain tilth.

This soil has medium potential for pasture. It is well suited to coastal bermudagrass, common bermudagrass, and weeping lovegrass. Proper pasture management includes fertilization, weed control, and controlled grazing.

This soil has high potential for range. The climax plant community is a mixture of tall and mid grasses and an overstory of a few live oak, elm, and hackberry trees along the streams and occasionally in motts.

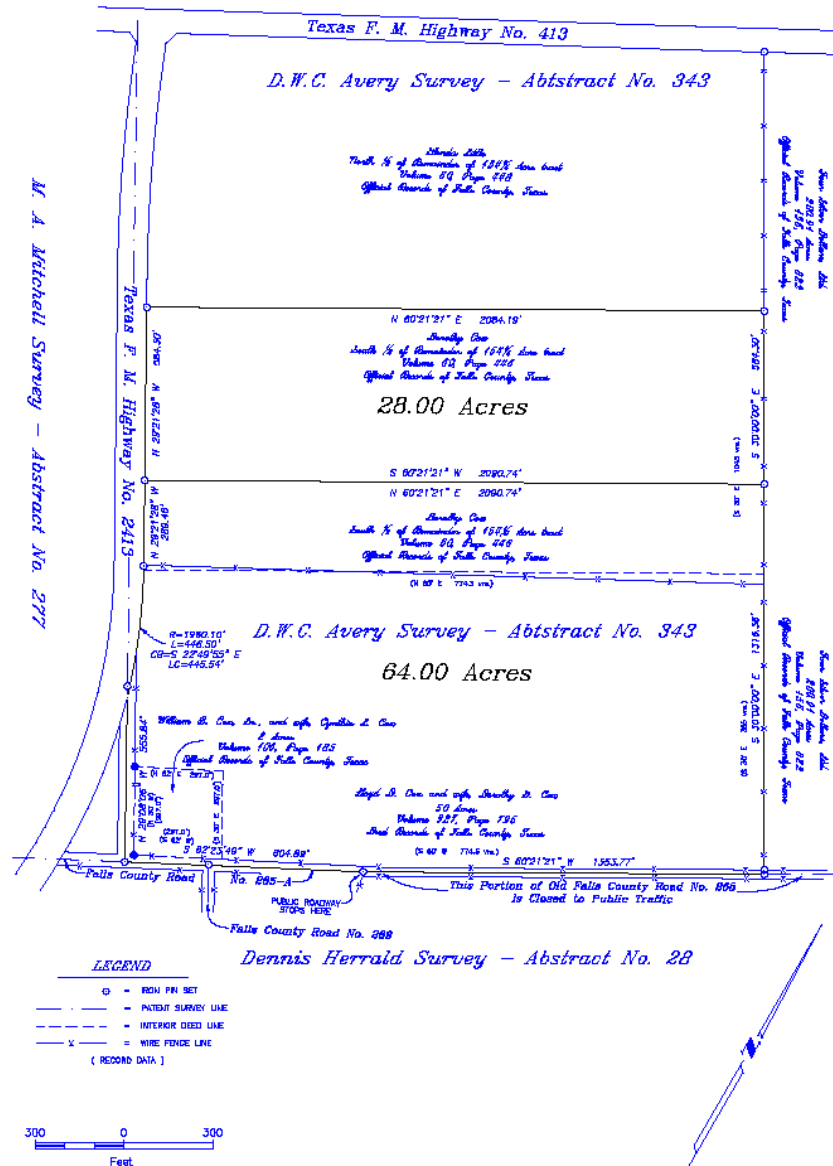
This soil has low potential for most urban uses. Its most restrictive limitations are shrinking and swelling with changes in moisture, corrosivity to uncoated steel, and slow percolation. The potential for recreation is medium. The very slow permeability and slope are the most restrictive limitations for this use. Potential for both openland and rangeland wildlife habitats is medium. Capability subclass IVE; Claypan Prairie range site.

FOR
SALE

28 Acres MOL Pasture and Recreational Land Reagan, Falls County, TX 76680

Survey

Plat Showing Two Tracts of Land in Falls County, Texas.



SURVEYED ON THE GROUND, JUNE 1, 2006, BASIS OF BEARINGS, EAST LINE OF SHOWN 154½ ACRE TRACT AND SHOWN 50 ACRE TRACT. ALSO REFERENCE ACCOMPANYING FIELD NOTES DESCRIBING THE TRACTS SHOWN HEREDIN. SIGNED JUNE 2, 2006.

Toby Tibbitt
TOBY TIBBITT
REGISTERED PROFESSIONAL LAND SURVEYOR NO. 5488



Bob Dube (Broker)

512-423-6670 (mobile) 254-803-5263 (LAND)

bob@texasfarmandranchrealty.com

www.texasfarmandranchrealty.com

A DBA of Dube's Commercial, Inc. TREC# 484723

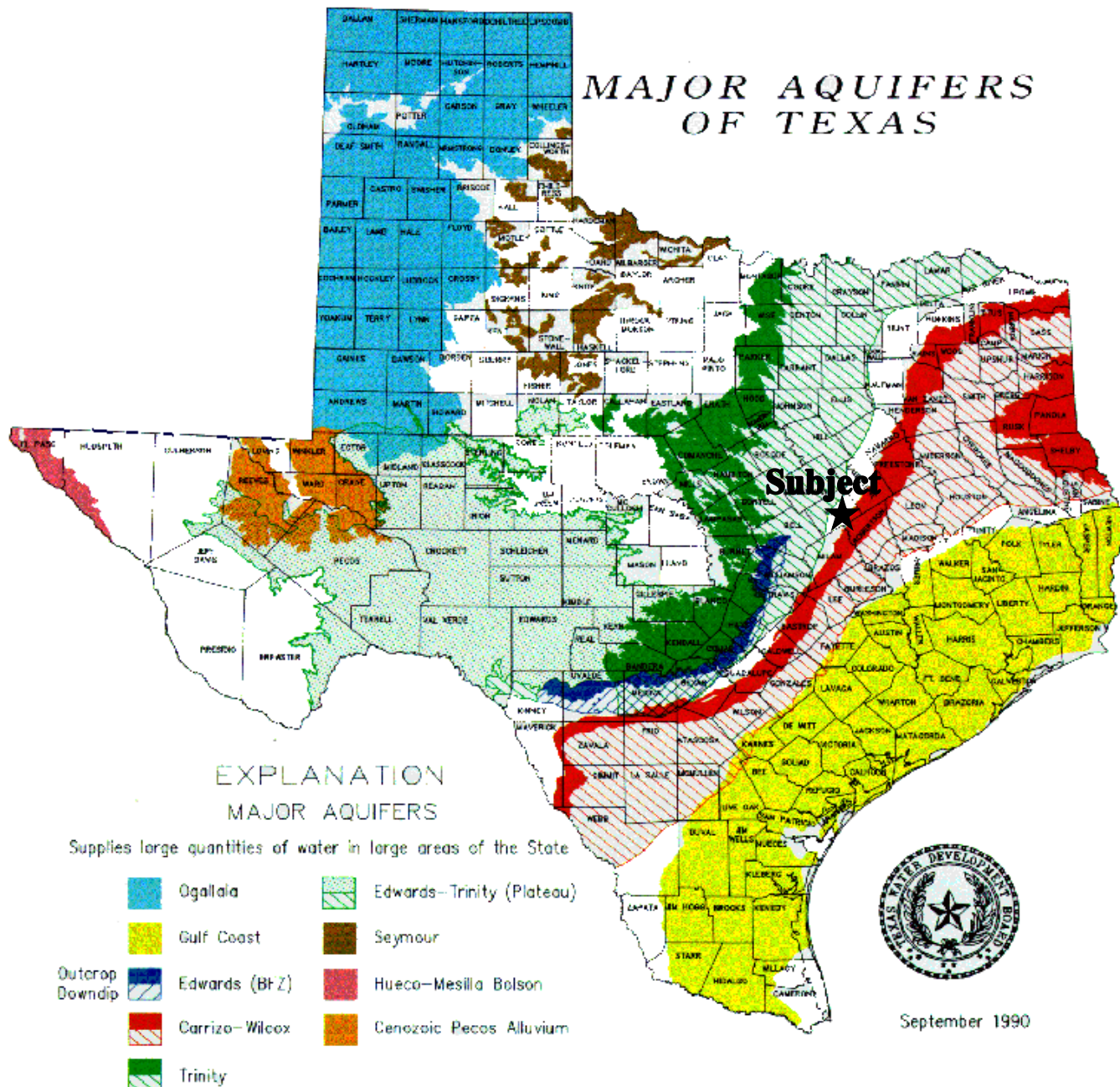
FOR
SALE

28 Acres MOL

Pasture and Recreational Land

Reagan, Falls County, TX 76680

Property Location to Major Aquifers of Texas



TEXAS
FARM & RANCH REALTY

—“Stewards of Land”—
A DBA of Dube’s Commercial, Inc. TREC# 484723

Bob Dube (Broker)

512-423-6670 (mobile) 254-803-5263 (LAND)

bob@texasfarmandranchrealty.com

www.texasfarmandranchrealty.com

**FOR
SALE**

28 Acres MOL Pasture and Recreational Land Reagan, Falls County, TX 76680

CONFIDENTIALITY & DISCLAIMER

The information contained in the following Investment Brochure is proprietary and strictly confidential. It is intended to be reviewed only by the party receiving it from Dube's Commercial Inc. and should not be made available to any other person or entity without the written consent of Dube's Commercial Inc. This Investment Brochure has been prepared to provide summary information to prospective investors, and to establish only a preliminary level of interest in the subject property. The information contained herein is not a substitute for a thorough due diligence investigation. Dube's Commercial Inc. makes no warranty or representation, with respect to the income or expenses for the subject property, the future projected financial performance of the property, the size and square footage of the property and improvements, the presence or absence of contaminating substances, PCB's or asbestos, the compliance with State and Federal regulations, the physical condition of the improvements thereon, or the financial condition or business prospects of any tenant, or any tenant's plans or intentions to continue its occupancy of the subject property. The information contained in this Investment Brochure has been obtained from sources we believe to be reliable; however, Dube's Commercial Inc. makes no warranty or representation whatsoever regarding the accuracy or completeness of the information provided.

**THE TEXAS REAL ESTATE COMMISSION (TREC) REGULATES
REAL ESTATE BROKERS AND SALES AGENTS, REAL ESTATE INSPECTORS,
HOME WARRANTY COMPANIES, EASEMENT AND RIGHT-OF-WAY AGENTS
AND TIMESHARE INTEREST PROVIDERS**

**YOU CAN FIND MORE INFORMATION AND
CHECK THE STATUS OF A LICENSE HOLDER AT
WWW.TREC.TEXAS.GOV**

**YOU CAN SEND A COMPLAINT AGAINST A LICENSE HOLDER TO TREC
A COMPLAINT FORM IS AVAILABLE ON THE TREC WEBSITE**

**TREC ADMINISTERS TWO RECOVERY FUNDS WHICH MAY BE USED TO
SATISFY A CIVIL COURT JUDGMENT AGAINST A BROKER, SALES AGENT,
REAL ESTATE INSPECTOR, OR EASEMENT OR RIGHT-OF-WAY AGENT,
IF CERTAIN REQUIREMENTS ARE MET**

**IF YOU HAVE QUESTIONS OR ISSUES ABOUT THE ACTIVITIES OF
A LICENSE HOLDER, THE COMPLAINT PROCESS OR THE
RECOVERY FUNDS, PLEASE VISIT THE WEBSITE OR CONTACT TREC AT**



**TEXAS REAL ESTATE COMMISSION
P.O. BOX 12188
AUSTIN, TEXAS 78711-2188
(512) 936-3000**



Bob Dube (Broker)

512-423-6670 (mobile) 254-803-5263 (LAND)

bob@texasfarmandranchrealty.com www.texasfarmandranchrealty.com

~"Stewards of Land"
A DBA of Dube's Commercial, Inc. TREC# 484723



Information About Brokerage Services

Texas law requires all real estate license holders to give the following information about brokerage services to prospective buyers, tenants, sellers and landlords.

11-2-2015



TYPES OF REAL ESTATE LICENSE HOLDERS:

- A **BROKER** is responsible for all brokerage activities, including acts performed by sales agents sponsored by the broker.
- A **SALES AGENT** must be sponsored by a broker and works with clients on behalf of the broker.

A BROKER'S MINIMUM DUTIES REQUIRED BY LAW (A client is the person or party that the broker represents):

- Put the interests of the client above all others, including the broker's own interests;
- Inform the client of any material information about the property or transaction received by the broker;
- Answer the client's questions and present any offer to or counter-offer from the client; and
- Treat all parties to a real estate transaction honestly and fairly.

A LICENSE HOLDER CAN REPRESENT A PARTY IN A REAL ESTATE TRANSACTION:

AS AGENT FOR OWNER (SELLER/LANDLORD): The broker becomes the property owner's agent through an agreement with the owner, usually in a written listing to sell or property management agreement. An owner's agent must perform the broker's minimum duties above and must inform the owner of any material information about the property or transaction known by the agent, including information disclosed to the agent or subagent by the buyer or buyer's agent.

AS AGENT FOR BUYER/TENANT: The broker becomes the buyer/tenant's agent by agreeing to represent the buyer, usually through a written representation agreement. A buyer's agent must perform the broker's minimum duties above and must inform the buyer of any material information about the property or transaction known by the agent, including information disclosed to the agent by the seller or seller's agent.

AS AGENT FOR BOTH - INTERMEDIARY: To act as an intermediary between the parties the broker must first obtain the written *each party* to the transaction. The written agreement must state who will pay the broker and, in conspicuous bold or nt, set forth the broker's obligations as an intermediary. A broker who acts as an intermediary:

- Must treat all parties to the transaction impartially and fairly;
- With the parties' written consent, appoint a different license holder associated with the broker to each party (owner and buyer/tenant) to communicate with, provide opinions and advice to, and carry out the instructions of each party to the transaction.
- must not, unless specifically authorized in writing to do so by the party, disclose:
 - o that the owner will accept a price less than the written asking price;
 - o that the buyer/tenant will pay a price greater than the price submitted in a written offer; and
 - o any confidential information or any other information that a party specifically instructs the broker in writing not to disclose, unless required to do so by law.

AS SUBAGENT: A license holder acts as a subagent when aiding a buyer in a transaction without an agreement to represent the buyer. A subagent can assist the buyer but does not represent the buyer and must place the interests of the owner first.

TO AVOID DISPUTES, ALL AGREEMENTS BETWEEN YOU AND A BROKER SHOULD BE IN WRITING AND CLEARLY ESTABLISH:

- The broker's duties and responsibilities to you, and your obligations under the representation agreement.
- Who will pay the broker for services provided to you, when payment will be made and how the payment will be calculated.

LICENSE HOLDER CONTACT INFORMATION: This notice is being provided for information purposes. It does not create an obligation for you to use the broker's services. Please acknowledge receipt of this notice below and retain a copy for your records.

Dube's Commercial, Inc.	484723	bob@dubesccommercial.com	512-671-8008
Licensed Broker /Broker Firm Name or Primary Assumed Business Name	License No.	Email	Phone
Robert T. Dube	365515	bob@texasfarmandranchrealty.com	254-803-5263
Designated Broker of Firm	License No.	Email	Phone
Licensed Supervisor of Sales Agent/ Associate	License No.	Email	Phone
Sales Agent/Associate's Name	License No.	Email	Phone

Buyer/Tenant/Seller/Landlord Initials

Date