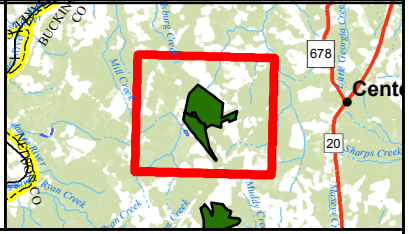


Note: Stands listed below may include multi-part stands. In cases where a single tract requires multiple maps, acreages listed may include shapes not visible on this map.

Stand	Description	Year Origin	Thin Year	Acres
10003	Planted Upland Loblolly Pine	1985	2009	2.16
10004	Planted Upland Loblolly Pine	2015		102.44
10005	Planted Upland Loblolly Pine	1990	2009	46.83
10006	Planted Upland Loblolly Pine	2006		110.68
10010	Planted Upland Loblolly Pine	2007		73.42
10011	Planted Upland Loblolly Pine	2013		23.96
10012	Planted Upland Loblolly Pine	2016		37.44
10013	Planted Upland Loblolly Pine	2016		54.69
30013	Natural Bottomland Mixed Hardwood	1960		0.68
50002	Natural Bottomland Mixed Hardwood	1975		99.97
80005	Upland Cutover	2017		31.24
90007	Road	0		6.19
90008	Utility	0		1.73

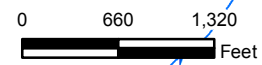
Land Cover Types

	Undefined		Pine (0-14 yrs)
	Bottomland Hardwood		Pine (15-25 yrs)
	Conifer		Pine (26+ yrs)
	Cutover		Pine/Hardwood
	Hardwood		Water
	Nonforest		

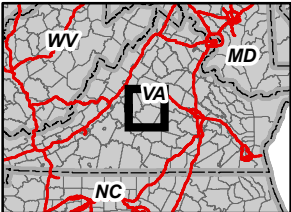
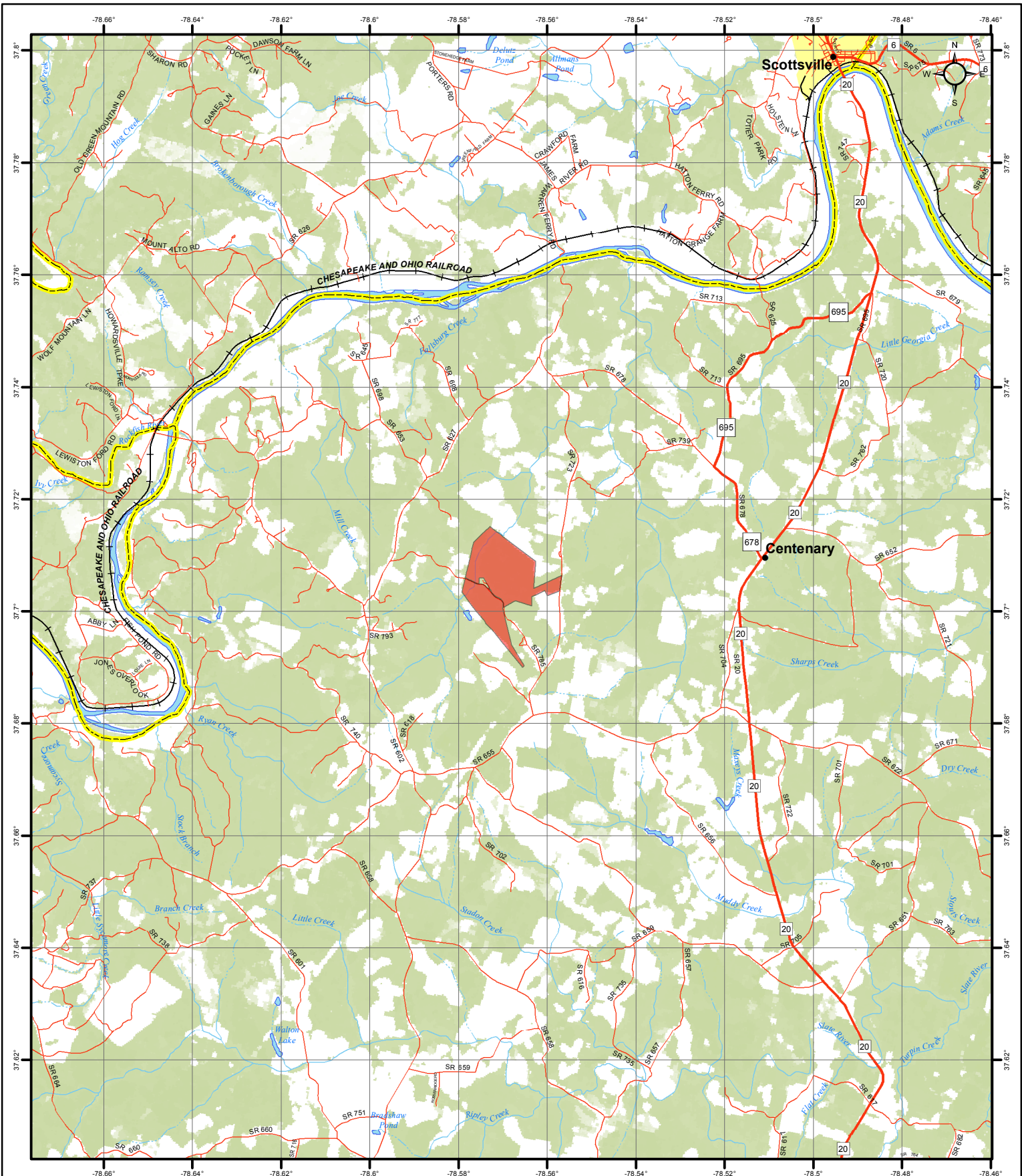


Timber Type Map

Client:	Valencia Tree, LLC		
Unit:	Monticello Forest, LLC		
Tract:	376 - Wallace (Map 1 of 1)		
Tract Number:	011711	Tract Acres:	591.43
Tract Date:	6/20/2008	Stand Date:	3/24/2017
County:	Buckingham	State:	Virginia
Date Printed:	3/28/2017	Projection:	NAD 1983 UTM Zone 17N



Map Produced by F&W Forestry Services, Inc.



F&W Forestry Services, Inc.
Map Date : 4/21/2015

Valencia Tree, LLC
Tract # 011711
376 - Wallace Tract
Buckingham County, VA
591.43 Acres

Lat. 37.705, Long. -78.57 (Tract Center)

Legend

- 4WD
- Local Paved or Unknown
- Secondary State or County Hwy
- Primary US or State Hwy
- Primary Limited Access or Interstate
- Counties

