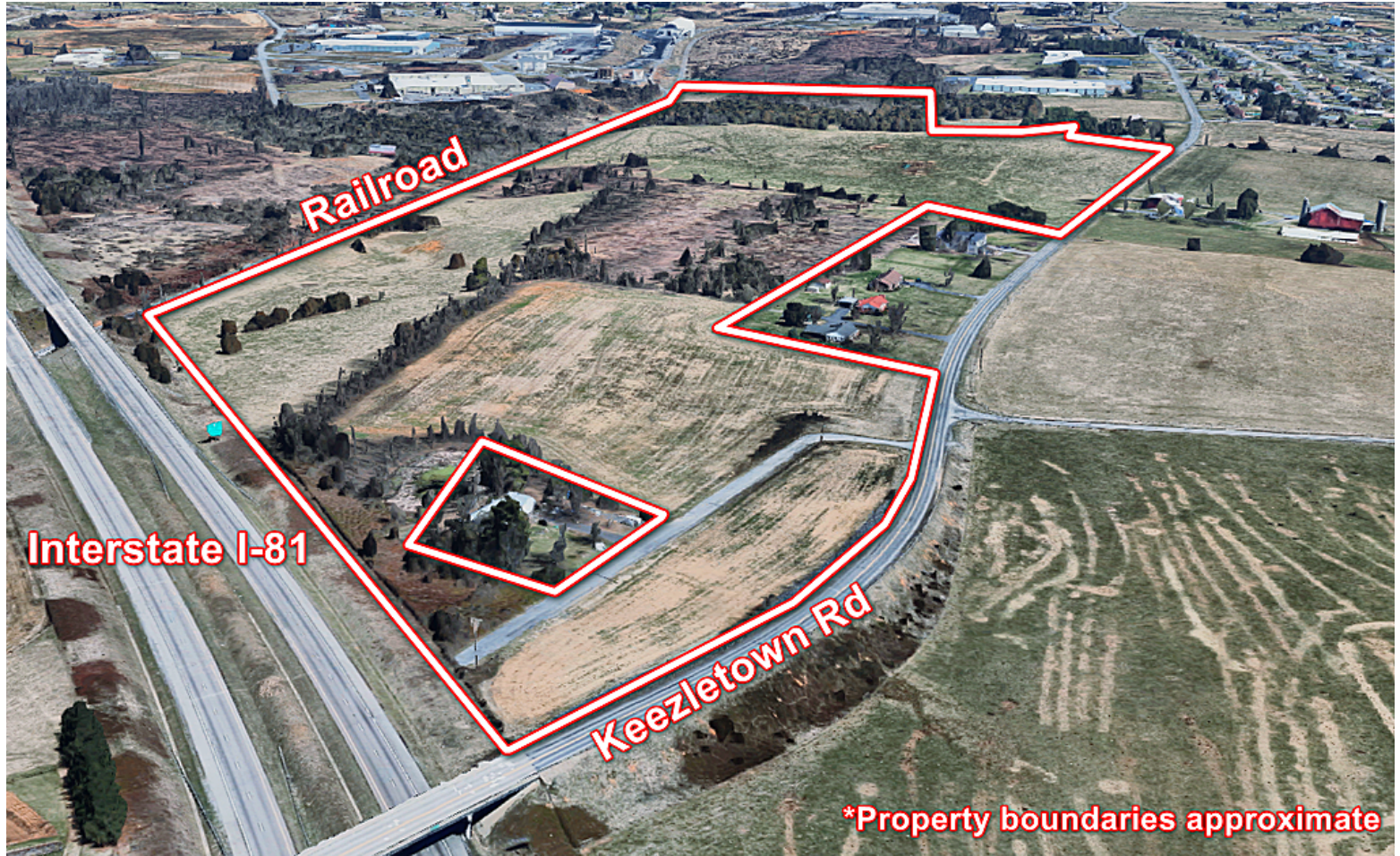


75 ACRES ZONED INDUSTRIAL

FOR SALE

TBD KEEZLETOWN RD
MOUNT SIDNEY, VA 24467



75 ACRES

ZONED GI

OFFERED AT \$2,700,000



PROPERTY OVERVIEW

Imagine the possibilities on this large industrial, fairly level land in an excellent location. 5 parcels that encompass 75 acres with public water and sewer available. Interstate 81 frontage and easy 3 minutes to I-81 Exit 235 in Weyers Cave. The railroad runs right along the property to allow for manufacturing or distribution. The area is booming with other well established industrial businesses. Call me to discuss the options for your business!



JOHN DALE GARDNER

540-290-4321 | JOHNDALEGARDNER@GMAIL.COM

Lee & Associates
COMMERCIAL REAL ESTATE BROKERAGE

WWW.LEEANDASSOC.COM

75 ACRES ZONED INDUSTRIAL

FOR SALE

TBD KEEZLETOWN RD
MOUNT SIDNEY, VA 24467



75 ACRES

ZONED GI

OFFERED AT \$2,700,000



JOHN DALE GARDNER

540-290-4321 | JOHNDALEGARDNER@GMAIL.COM | WWW.LEEANDASSOC.COM

Lee & Associates
COMMERCIAL REAL ESTATE BROKERAGE

75 ACRES ZONED INDUSTRIAL

FOR SALE

TBD KEEZLETOWN RD
MOUNT SIDNEY, VA 24467



JOHN DALE GARDNER

540-290-4321 | JOHNDALEGARDNER@GMAIL.COM | WWW.LEEANDASSOC.COM

Lee & Associates
COMMERCIAL REAL ESTATE BROKERAGE

All information herein, including square footage and acreage is believed to be accurate, but not guaranteed or warranted. Any and all parties are responsible for verifying information prior to leasing or purchasing.