

KOONTZ MICHAEL E & JU X

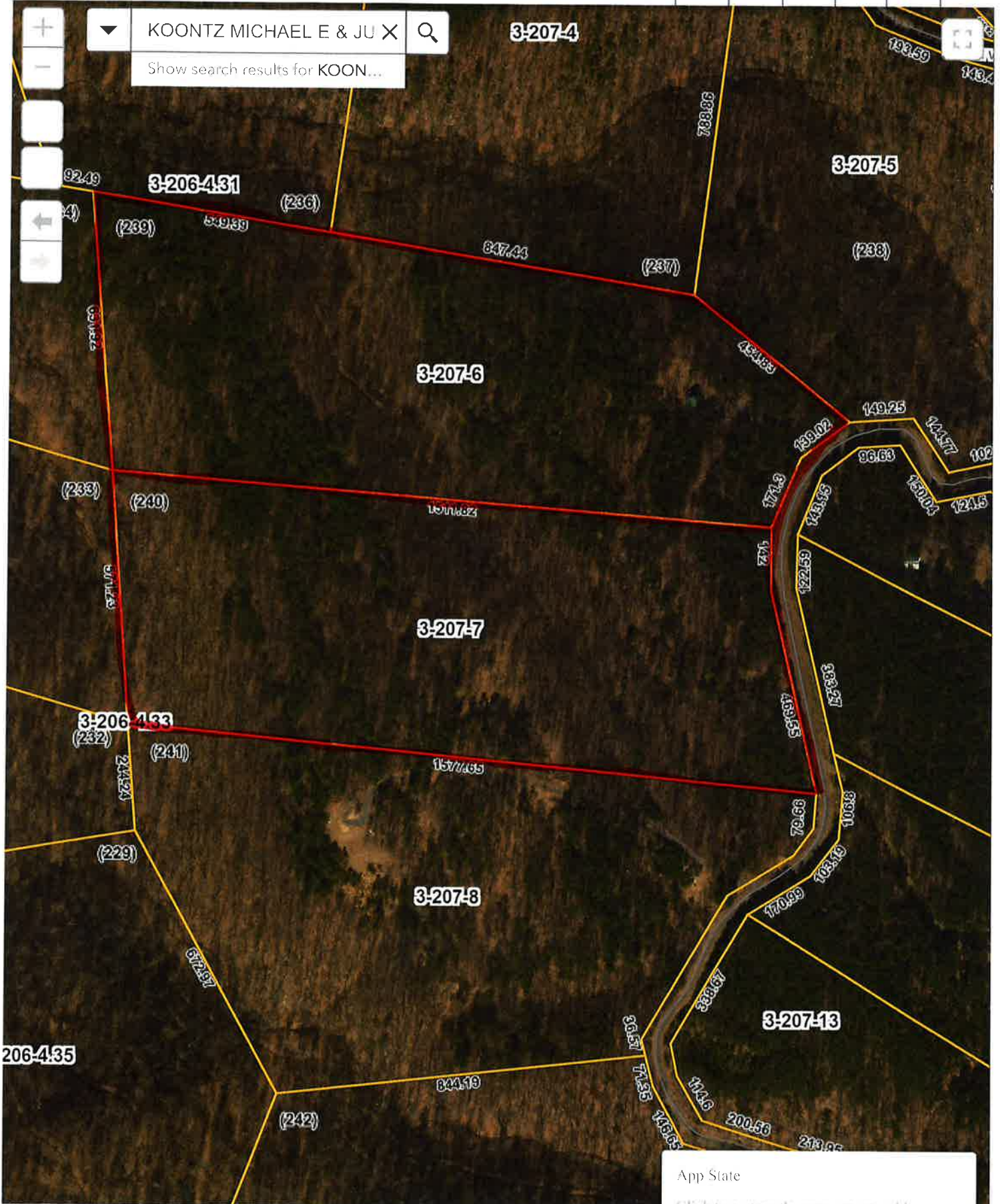
Show search results for KOON...



300ft

78.853 39.149 Degrees

App State
Click to restore the map extent and layers visibility where you left off.



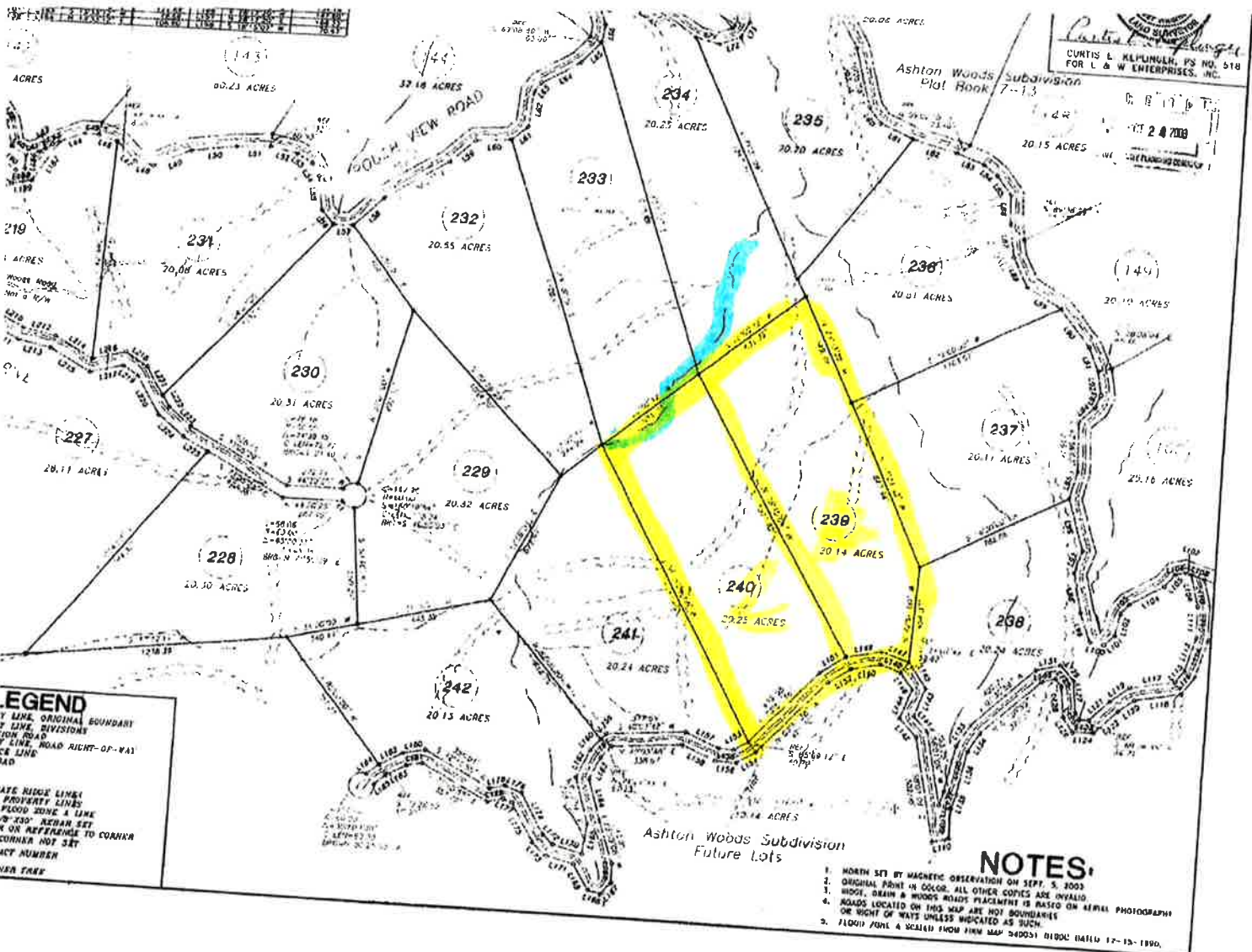
▼ KOONTZ MICHAEL E & JU X 🔍
Show search results for KOON...

Map navigation controls: zoom in (+), zoom out (-), home, full screen, and directional arrows.

300ft

-78.852 39.149 Degrees

App State
Click to restore the map extent and layers visibility where you left off.



Curtis L. Kipling, P.E.
 LAND SURVEYOR
 CURTIS L. KIPLING, P.S. NO. 518
 FOR L & W ENTERPRISES, INC.
 0 1 1 6 T
 24 2008
 RE-PLANNING DIVISION

LEGEND
 Y LINE, ORIGINAL BOUNDARY
 Y LINE, DIVISIONS
 DASHED LINE, ROAD
 F LINE, ROAD RIGHT-OF-WAY
 CE LINE, 140'
 *SEE RISKY LINES
 PROPERTY LINES
 FLOOD ZONE A LINE
 70' 130' ARBAN SET
 N ON REFERENCE TO CORNER
 CORNER NOT SET
 ACT NUMBER
 NEAR TREE

NOTES:
 1. NORTH SET BY MAGNETIC OBSERVATION ON SEPT. 5, 2008
 2. ORIGINAL PLOTTING IN COLOR. ALL OTHER COPIES ARE INVALID
 3. HIGHWAY, DRAIN & WOODS ROAD PLACEMENT IS BASED ON AERIAL PHOTOGRAPHY
 OR RIGHT OF WAYS UNLESS INDICATED AS SUCH
 4. FLOOD ZONE A SCALED FROM FIRM MAP 540051 RELOC DATED 12-15-1990.

Ashton Woods Subdivision
 Future Lots