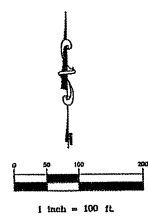
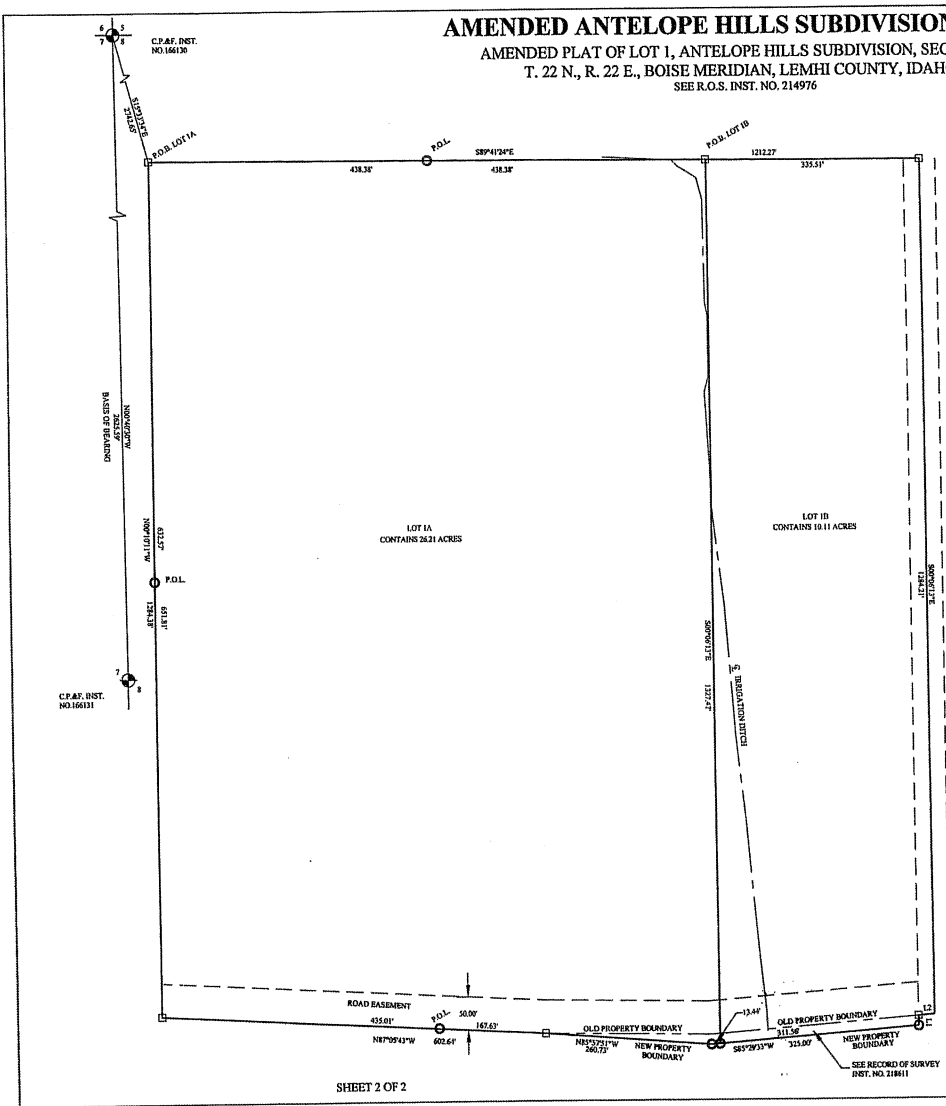


AMENDED ANTELOPE HILLS SUBDIVISION PLAT

AMENDED PLAT OF LOT 1, ANTELOPE HILLS SUBDIVISION, SECTION 8,
T. 22 N., R. 22 E., BOISE MERIDIAN, LEMHI COUNTY, IDAHO
SEE R.O.S. INST. NO. 214976



LEGEND

- SECTION CORNER OR QUARTER CORNER
- 5/8" X 3/4" REBAR WITH A YELLOW PLASTIC CAP MARKED "WADE PLS 5080"
- 1/2" REBAR SET BY PLS 978
- P.O.L. POINT ON LINE
- P.O.B. POINT OF BEGINNING

LINE TABLE		
LINE	LENGTH	BEARING
L1	15.90	S89°06'13"E
L2	24.91	S85°27'13"W

SURVEYORS NOTE

THE PURPOSE OF THIS SURVEY IS TO RELOCATE COMMON BOUNDARY LINES BETWEEN ADJOINING PROPERTIES ON THE SOUTHERLY BOUNDARY OF LOTS 1A AND 1B, AND THEREFORE THIS DRAWING IS EXEMPT FROM A LOT SPLIT REVIEW.

COUNTY RECORDER'S CERTIFICATE

TIME: 3:28 PM DAY: 26th MONTH: October 2004
 BOOK: 8 PAGE: 13 INST. NO.: 266684
 RECORDER: *Juni J. Nelson*
 BY: *K. Baumut*

	FDR	
	MIKE TUPPER	
	DATE: 10/26/04	DRAWN/CHK BY: CWL/JW
	PROJECT: PROJECT ANTELOPE HILLS.DWG	DWG NAME: TUPPER.DWG
SURVEY: ANTELOPE HILLS/TUPPERZAK		
WAIDE SURVEYING GLOBAL POSITIONING SERVICE LAND SURVEYING PLANNING 101 S. WASHINGTON SALMON, IDAHO 83402 208-755-2015		

1/4	SEC	T	R
X	8	22N	22E