

CECILIA
SECTION 15, T 8 N, R 16 W, N.M.P.M.
VALENCIA COUNTY, NEW MEXICO
OCTOBER 1979

B-162

DEDICATION

This subdivision of a certain tract of land situated in Section 15, T8N, R16W, N.M.P.M., Valencia County, New Mexico, as more particularly described by map and bounds as shown hereon, is with the free consent and in accordance with the desires of the undersigned owner and proprietor thereof, and the road right-of-way and easements as shown are hereby dedicated.

M.K. INVESTMENTS, INC.

Attest: Norman Allen

State of New Mexico
County of Bernalillo

The foregoing instrument was acknowledged before me this 31 day of October, 1979, by Norman Allen, vice-president of M.K. Investments, Inc., a New Mexico corporation, on behalf of said corporation.

My commission expires April 9, 1980
Notary Public

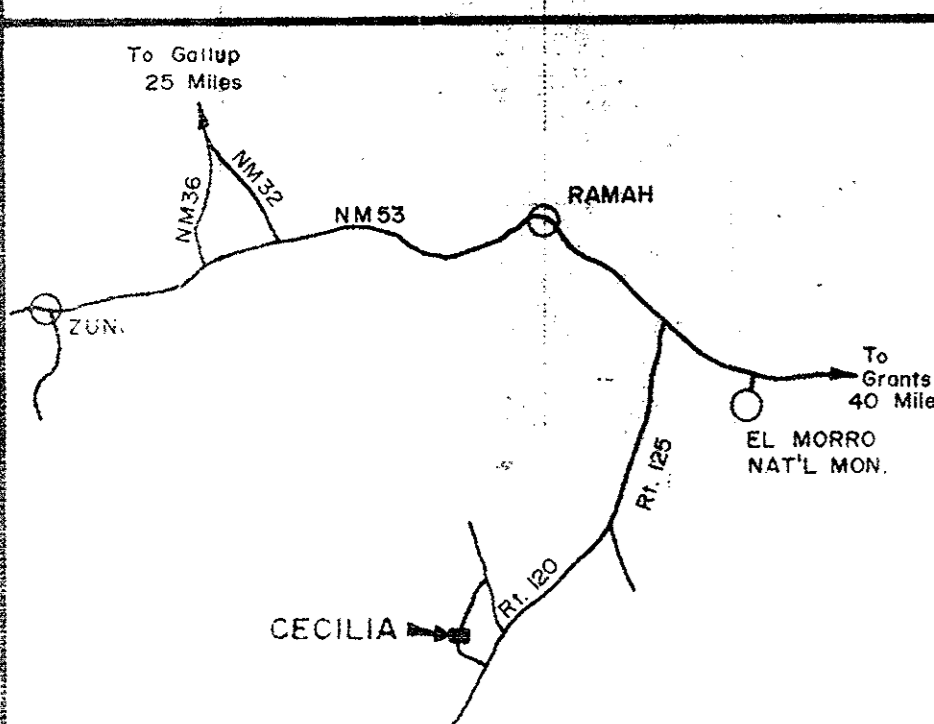
NOTES

1. Bearings were determined by solar observation.
2. Property corners are monumented with half inch iron stakes.
3. An easement for utilities, ten feet in width, is reserved from each lot lying along each property line including road frontage.

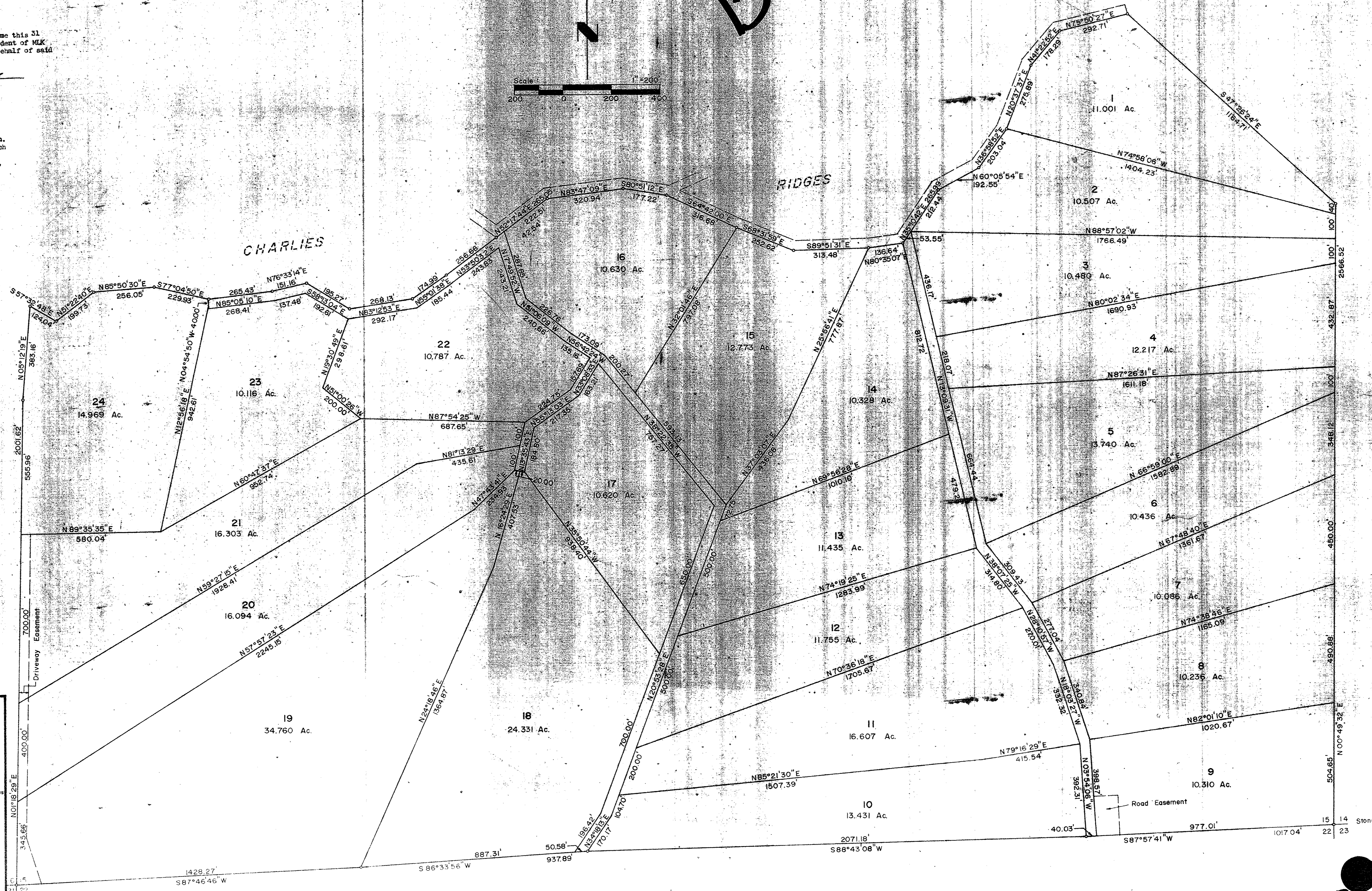
SURVEYOR'S CERTIFICATE
I certify that I am responsible for this survey and that this map accurately depicts the subdivision and survey.

Walt D. Stephens LS 2073

*Approved Santa Ana
Valencia County Managers
Nov 6, 1979*



KEY MAP
Scale: 1" = 8 Miles



B-162