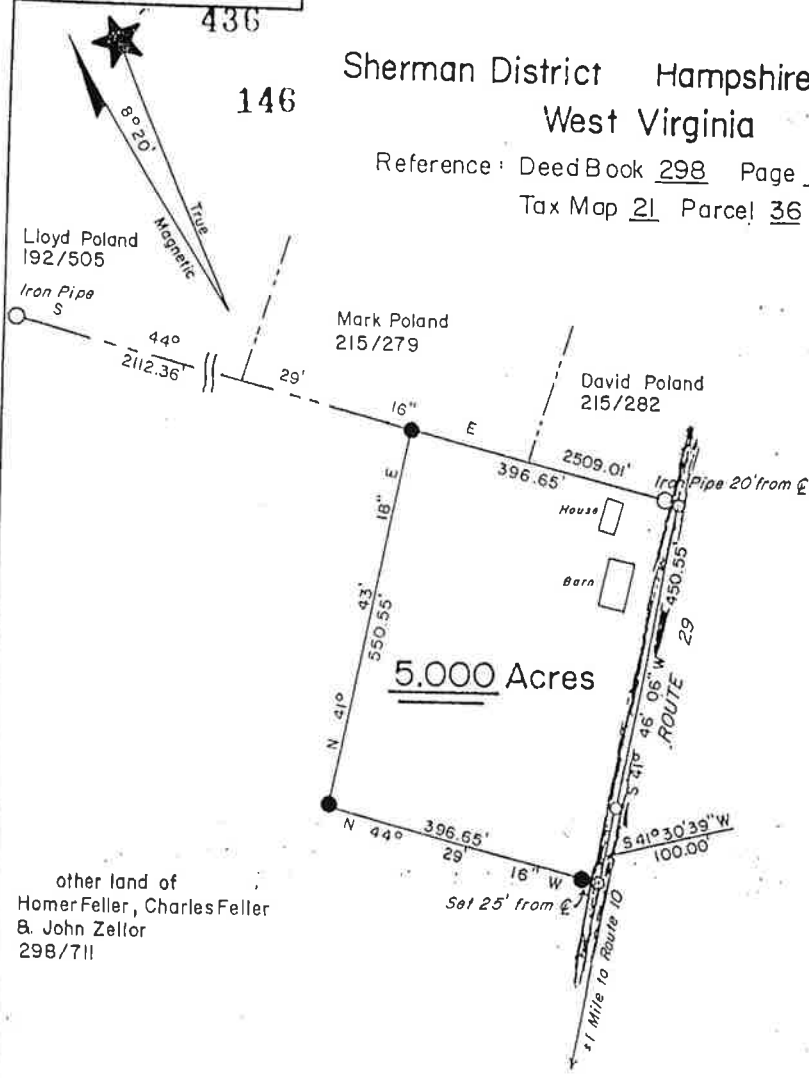


Readings on this map are based on the
 Complete Declination of 22' West
 February 1988 Hampshire Meridian
 Romney W Va
 SCALE: 1" = 200'

Sherman District Hampshire County
 West Virginia

Reference: Deed Book 298 Page 711
 Tax Map 21 Parcel 36



other land of
 Homer Feller, Charles Feller
 & John Zeller
 29B/711

- I CERTIFY THAT:
1. This Plat is based on an actual Field Survey made with sufficient accuracy and monumentation to permit reasonable retracement under normal conditions.
 2. The Survey and Plat are in accordance with Survey Regulations of the State of West Virginia.
 3. The Survey is based on faccord Description, is correct, and there are no overlaps encroachments or gaps.
 4. All lines are marked and painted where they pass through wooded areas.
 5. Any exceptions to the above are shown hereon.

- LEGEND**
- 5/8" Re-bar with Yellow Plastic Cap Labeled "WHITACRE LLS 506"
 - Concrete Monument with Brass Plate Labeled "WHITACRE LLS 506"
 - Calculated point ϵ road

FRANK A. WHITACRE LLS
 Route 1, Box 218 A
 Romney, W. Va. 26757
 Phone: 1-304-822-4606

Frank A. Whitacre



DATE August 10, 1988
 Map No. 88-009-01

BRUNING 44-231 B/183-01

STATE OF WEST VIRGINIA, County of Hampshire, to-wit:
 Be it remembered that on the 29th day of September, 1989, at 12:09,
 this Deed of Trust & Plat was presented in the Clerk's Office of the County Commission of said County
 and with the certificate thereof annexed, admitted to record.
 Attest Nancy C. Feller
 County Commission, Hampshire County, W. Va.

STATE OF WEST VIRGINIA, County of Hampshire, to-wit:
 Be it remembered that on the 11th day of August, 1999, at 1:58 P.M.,
 this Deed & Plat was presented in the Clerk's Office of the County Commission of said County
 and with the certificate thereof annexed, admitted to record.
 Attest Sharon H. Link
 County Commission, Hampshire County, W. Va.