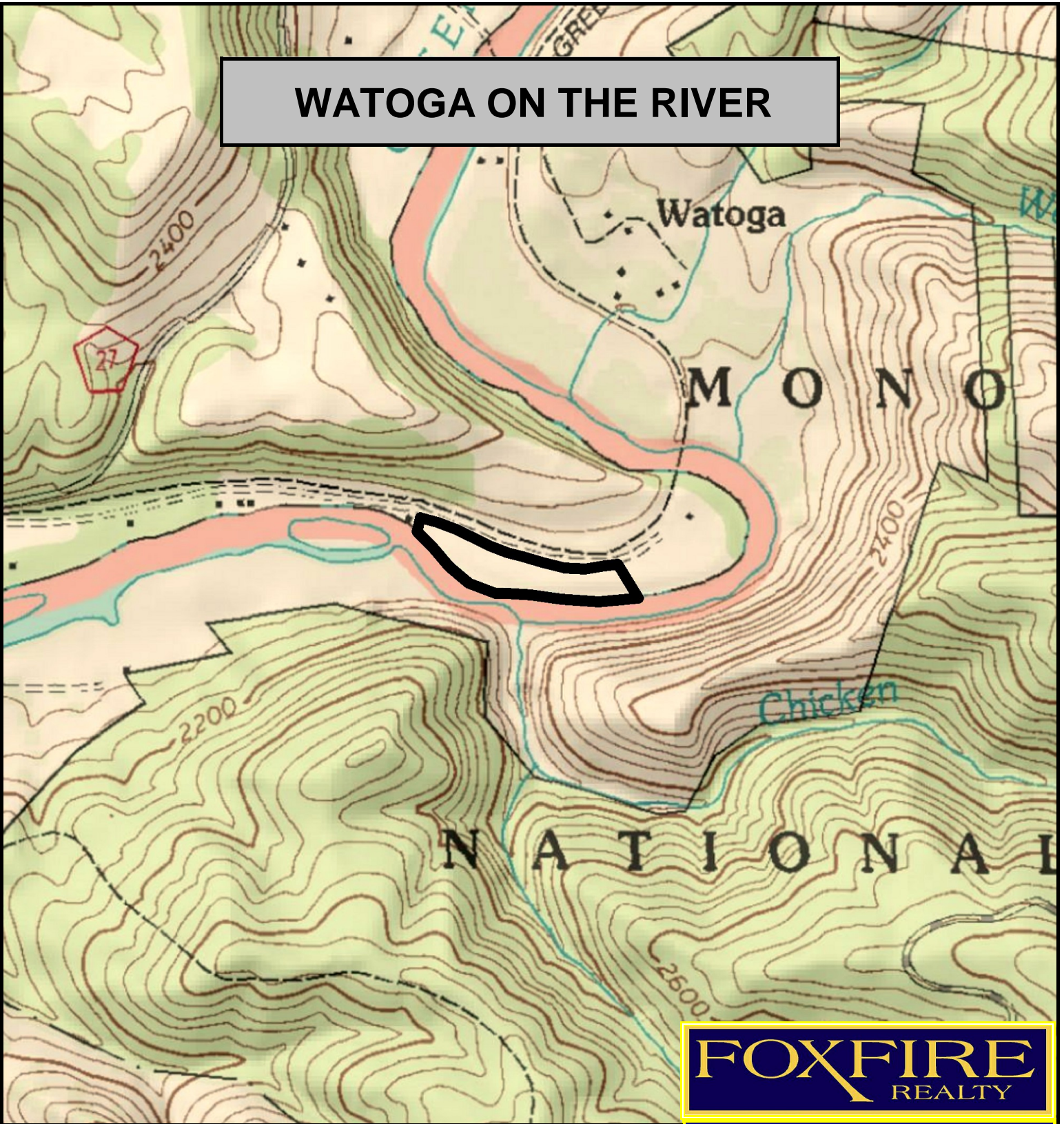
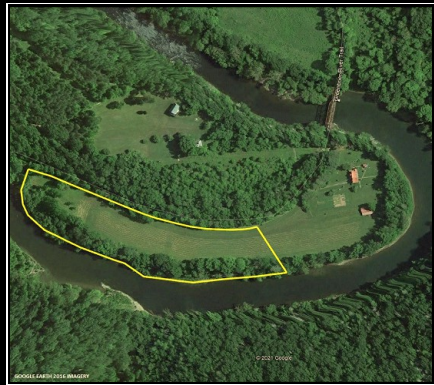


# WATOGA ON THE RIVER



**FOXFIRE**  
REALTY



WATOGA ON THE RIVER, Pocahontas County, WV (topographic map)  
Elevation: 2080' +/-; Google Coordinates:  
LAT 38.140974 (N), LON -80.155009 (W)  
This map is for general location purposes only. Consult a licensed land  
surveyor for actual boundary location and acreage.

**RICHARD GRIST, Broker - Auctioneer - Forester**  
304.646.8837 Richard@Foxfirenation.com  
[WWW.FOXFIRENATION.COM](http://WWW.FOXFIRENATION.COM)

FOR TOPO MAP

SCALE 1:9600

1 INCH = 800 FT.

