



64347 HARNEY AVE

CRANE, OR

20 ACRES

1981

DOUBLEWIDE

LARGE SHED

GOOD ACCESS

CRANE SCHOOL

DISTRICT

**GREAT VIEWS OF
THE MOUNTAINS**

\$230,000.00



**42423 LANE 13
BURNS, OR**



ALL INFORMATION IS FROM SOURCES DEEMED RELIABLE, BUT IS NOT GUARANTEED BY THIS BROKER OR HIS AGENTS. PROSPECTIVE BUYERS SHOULD CHECK ALL INFORMATION TO THEIR OWN SATISFACTION. PROPERTY IS SUBJECT TO PRIOR SALE, PRICE CHANGE, CORRECTION, OR WITHDRAWAL.

42423 LANE 13, BURNS, OR

LOCATION: 42423 Lane 13, Burns, OR. This is Account # 10266, Tax lot 900, T24S, R33EWM, Section 1. To go from Crane Jct. go north about 6 1/2 miles, then west on Lane 13 about 5/8 mile. This property is roughly 35 miles from Burns, 7 1/2 miles from Crane, three hours from Boise, ID and Bend, OR.

PROPERTY: There are 20 acres in this tax lot, and it is sagebrush land except where it is cleared around the improvements. It is fenced on three sides, with the west side not fenced. Lane 13 is the access and it is a legal access but not maintained by the county. The people living on the lane share in the road maintenance.

IMPROVEMENTS: 1981 doublewide manufactured home, 1,512 sq. ft. with three bedrooms, two baths, and a nice kitchen with many cupboards and breakfast bar. The dining room is separate and right off of the kitchen, and the living room is spacious and open. The laundry room / mud room has an exit out the back door. This is a beautifully maintained home with a metal roof and nice heat pump for cooling and heating. The electric furnace helps when it gets very cold in the winter. The owners put new windows and new outside doors in the house. It is set up on a concrete slab with a block skirting. The oven is new and is built in, the range is a cooktop, and the dishwasher is built in. The refrigerator stays, also. In addition, there is a nice 2,580 sq. ft. building for parking or storage or can be a shop. The roof and the two sides are metal and the ends are open. The floor has cinders on it. Attached on the east side is an enclosed room which is 300 sq. ft. There are two other sheds, one is the pump house, and the other is a newer 8x12 storage shed with a floor in it.

TAXES: 2020-2021- \$603.22

REMARKS: A very nice, hard to find property in a fairly remote, but easily accessible place. There are great views of the surrounding area including the Steens Mt. Sunrises and sunsets can be spectacular!

PRICE: \$230,000.00

Ken Thomas is a licensed real estate agent in Oregon.

Dally Zander is a licensed real estate agent in Oregon.

42423 LANE 13, BURNS, OR

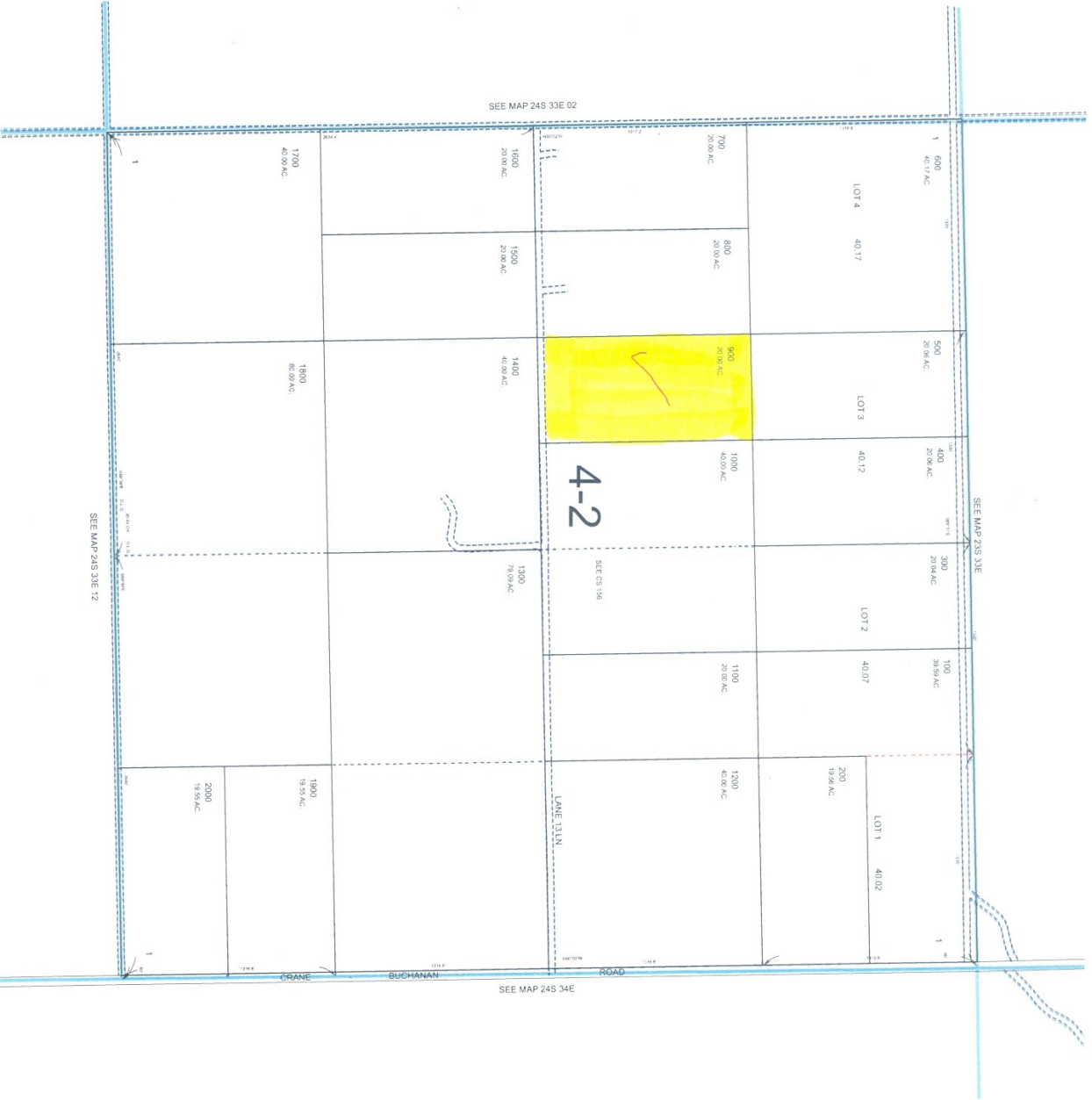


THIS MAP WAS PREPARED FOR
ASSESSMENT PURPOSE ONLY

SECTION 1 T.24S. R.33E. W.M.
HARNEY COUNTY

1" = 400'

24S33E01



SEE MAP 24S 33E 12

SEE MAP 24S 33E 02

SEE MAP 24S 33E

SEE MAP 24S 34E

PRINTED ON 4/24/2017

24S33E01

