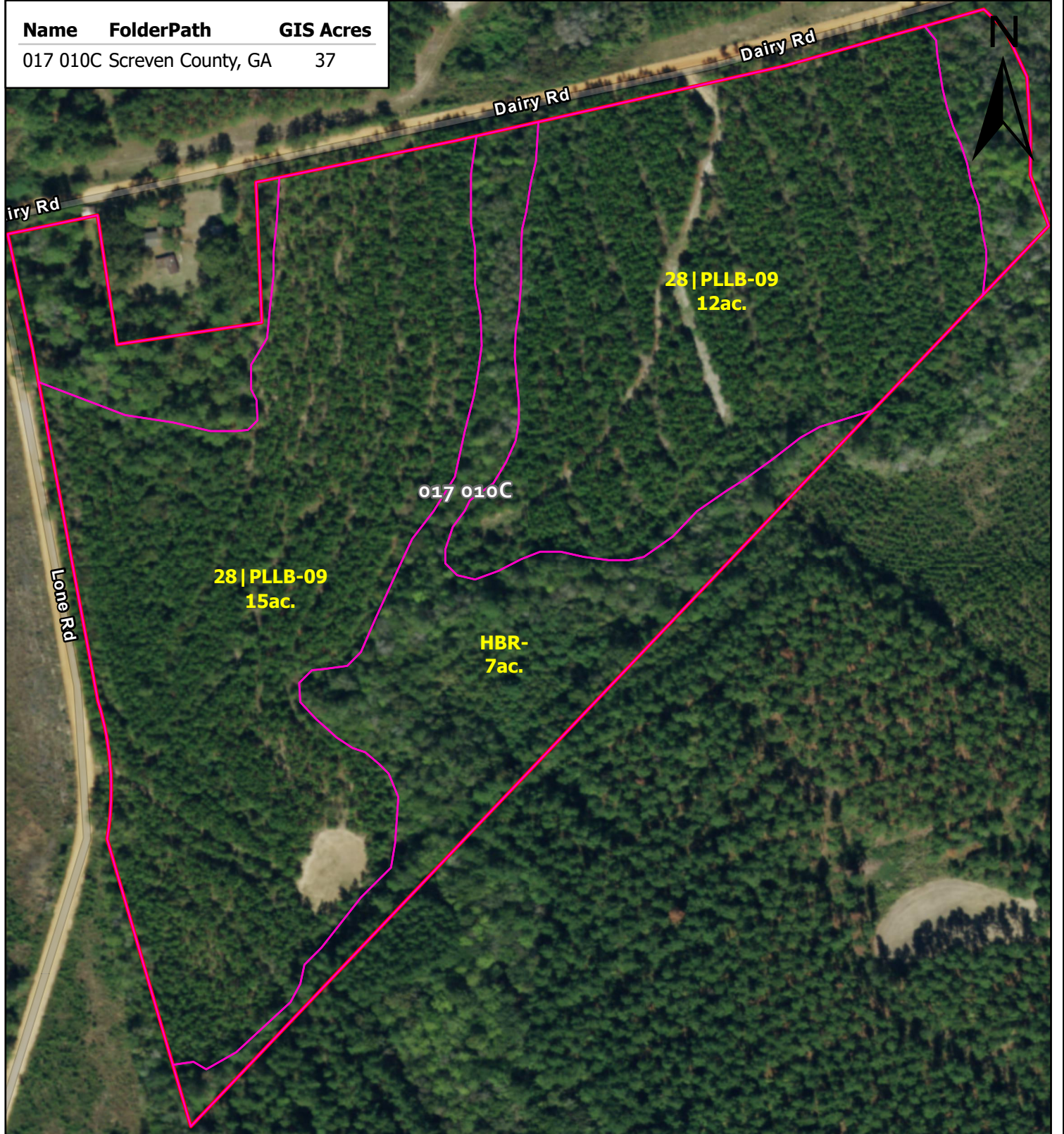
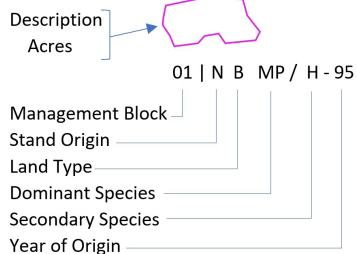


Name	FolderPath	GIS Acres
017 010C Screven County, GA		37



Stand Nomenclature



- Stand Origin Codes
- P = Planted
 - N = Natural
- Land Type Codes
- B = Bottomland
 - L = Lowland
 - U = Upland
 - OF = Old Field
 - S = Slope

Dominant Species

- [Pink outline] HBR = Hardwood Branch
- [Pink outline] LB = Loblolly Pine
- [Red outline] Compartments

Center: 81.77295°W 32.66918°N

1 inch equals 250 feet

