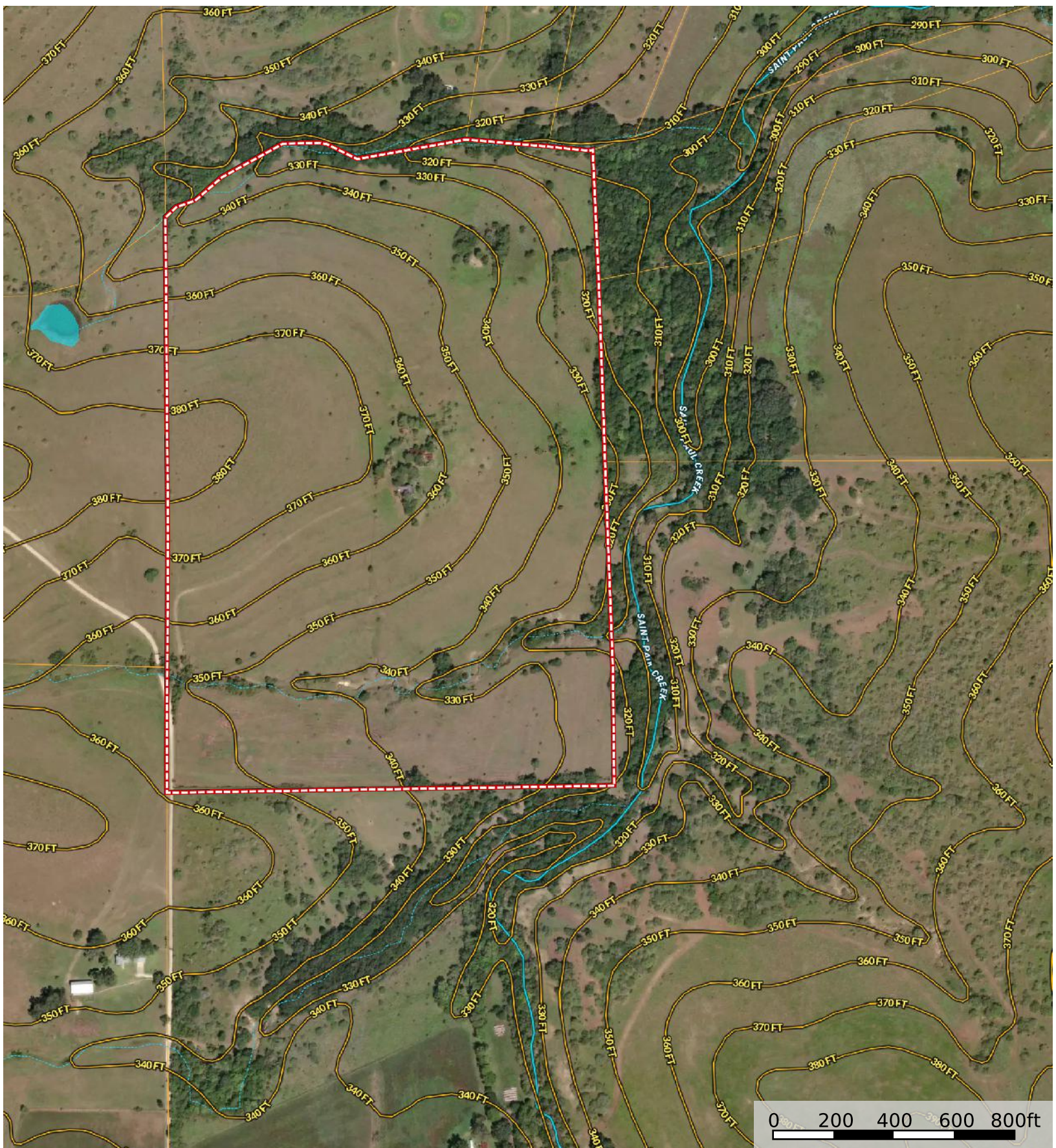


831 West sedan Road
 Fayette County, Texas, AC +/-



Pond / Tank	Boundary	Boundary	100 Year Floodplain	500 Year Floodplain	Floodway	Special	Unmapped/ Not Included	Stream, Intermittent	River/Creek
Water Body	Crude Oil	Natural Gas	Other	NOT AVAILABLE	Voltage 0 - 99 KV	Voltage 100 - 161 KV	Voltage 220 - 287 KV	Voltage 345 KV	Voltage 500 KV
Substations									

Tanya Schindler
 P: 361-865-2563

www.sctxsales.com

1400 Fm 609, Flatonia, TX 78941

The information contained herein was obtained from sources deemed to be reliable. MapRight Services makes no warranties or guarantees as to the completeness or accuracy thereof.