



FORT DRUM GROVE

33933 HWY 441 N
OKEECHOBEE, FL 34972

Daniel Lanier
O: 863.248.6649
daniel.lanier@svn.com

Property Overview



Sale Price **\$995,000**

PROPERTY OVERVIEW

Located in Northern Okeechobee County, this producing Valencia grove has been well-kept and profitable for years. The grove is irrigated by a 10" well with a diesel power unit and has been meticulously maintained and under a strict tree replacement program. This property would be a great addition to any citrus grower or could be easily converted to many other crops such as watermelons, vegetables, bamboo, or anything else that could be grown in South Florida.

OFFERING SUMMARY

Acreage: 42.51 Acres
Price / Acre: \$23,406
City: Okeechobee
County: Okeechobee
Property Type: Citrus Grove

Specifications & Features



SPECIFICATIONS & FEATURES

Land Types:	Citrus
Uplands / Wetlands:	2.4 Wetland Acres
Soil Types:	Pomello; Myakka; Immokalee Fine Sands
Taxes & Tax Year:	\$709.86 for 2021
Zoning / FLU:	Agriculture
Current Use:	Valencia Grove
Wells Information:	10" well
Income Features:	Producing Valencia Grove
Irrigation:	10" well with Deutz diesel engine. Microjet irrigation under the trees.

Location



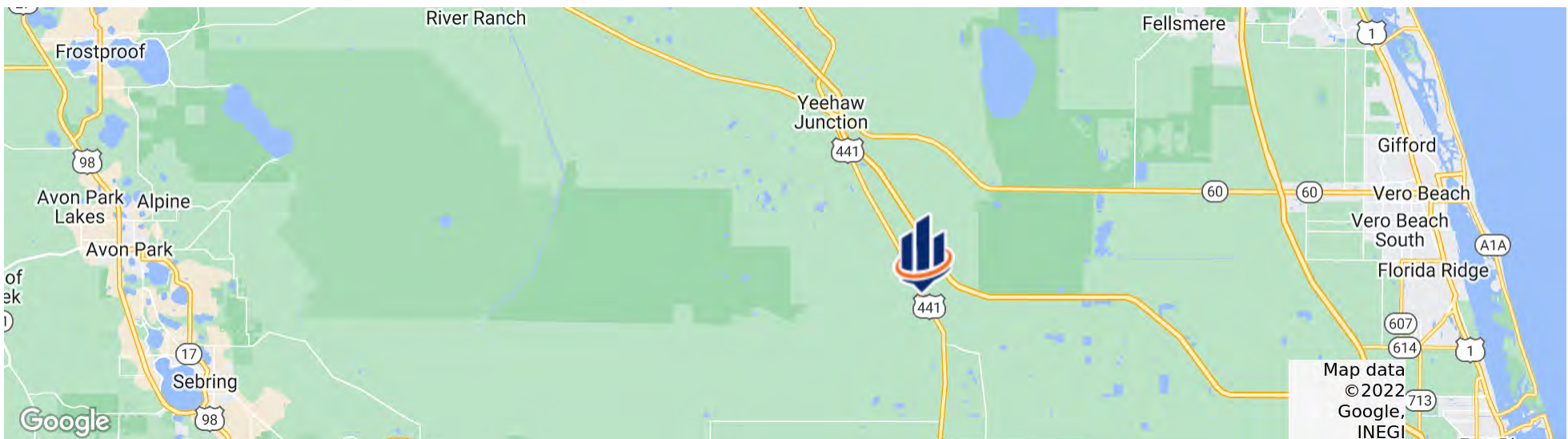
LOCATION & DRIVING DIRECTIONS

Parcel: 1-33-33-35-0A00-00011-0000 1-33-33-35-0A00-00012-0000 1-34-33-35-0A00-00002-0000

GPS: 27.5574069, -80.8234182

Driving Directions: Turn South on 441 from Yeehaw Junction; The grove is 11 miles from Yeehaw Junction on the West side of 441

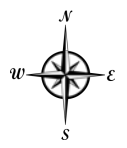
Showing Instructions: Contact Daniel Lanier



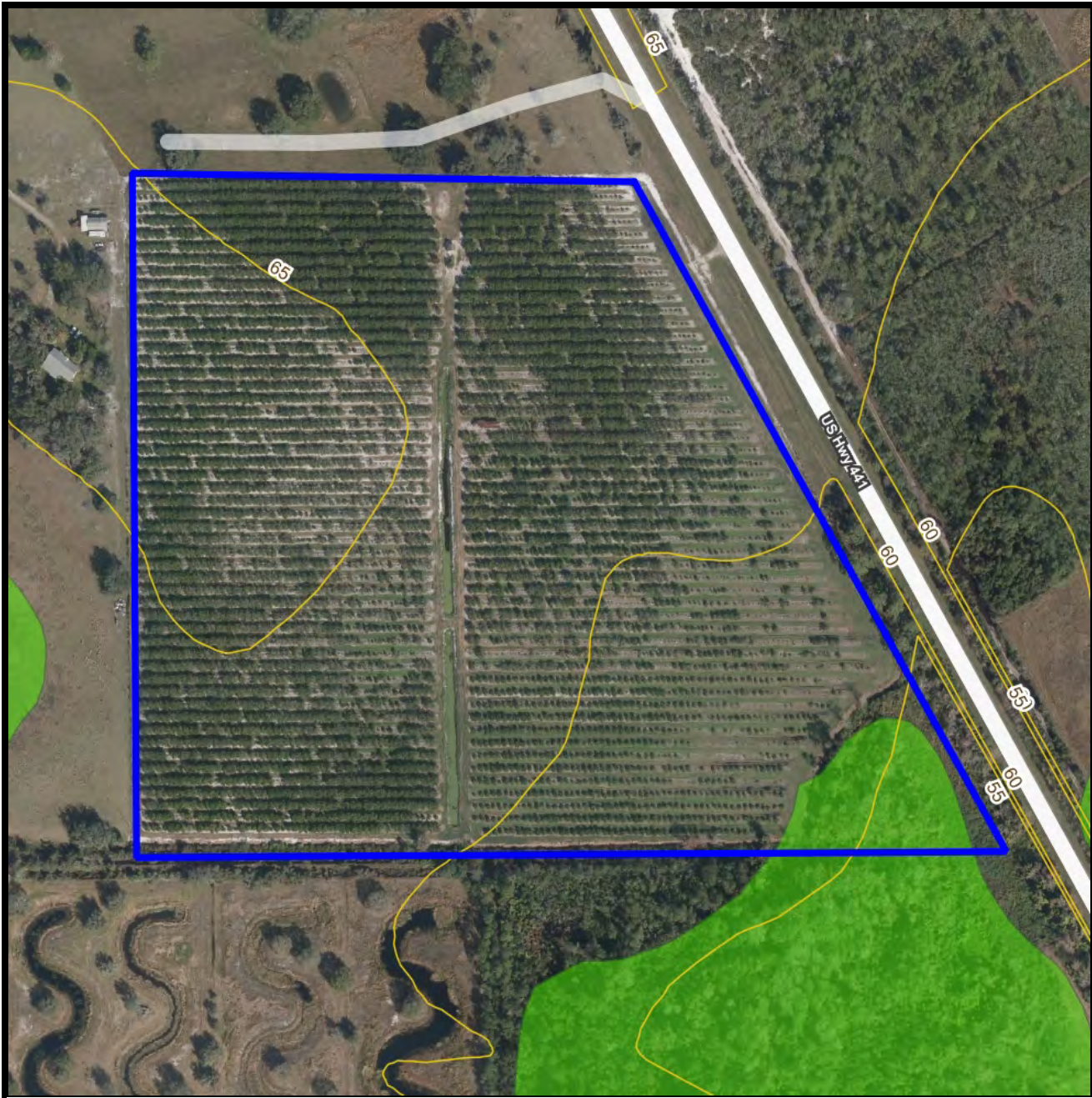


Aerial

- Polygons Drawing
- Lines Drawing
- Text Labels Drawing
- Points Drawing
- Streets MapWise
- Estuarine
- Lacustrine
- Marine
- Palustrine
- Riverine

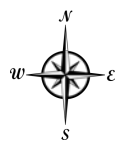


©2021 SVNIC. SVN | Saunders Ralston Dantzler Real Estate® is a registered trademark licensed to SVN Shared Value Network®. Any information displayed should be verified and is not guaranteed to be accurate by SVN Saunders Ralston Dantzler. You may not copy or use this material without written consent from SVN Saunders Ralston Dantzler.



Contour and Wetlands

- Polygons Drawing
- Lines Drawing
- Labels Drawing
- Points Drawing
- Streets MapWise
- Five Foot Contours
- Five Foot Contours2
- Esturaine
- Lacustrine
- Marine
- Palustrine
- Riverine



© 2021 SVNIC. SVN | Saunders Ralston Dantzler Real Estate® is a registered trademark licensed to SVN Shared Value Network®. Any information displayed should be verified and is not guaranteed to be accurate by SVN Saunders Ralston Dantzler. You may not copy or use this material without written consent from SVN Saunders Ralston Dantzler.

Additional Photos





125 N Broad Street, Suite 210
Thomasville, Georgia 31792
229.299.8600

1723 Bartow Rd
Lakeland, Florida 33801
863.248.6649

356 NW Lake City Ave
Lake City, Florida 32055
386.438.5896

www.SVNsaunders.com

All SVN® Offices Independently Owned & Operated | 2022 All Right Reserved

©2021 SVN | Saunders Ralston Dantzler Real Estate. All SVN® Offices Independently Owned and Operated SVN | Saunders Ralston Dantzler Real Estate is a full-service land and commercial real estate brokerage with over \$3 billion in transactions representing buyers, sellers, investors, institutions, and landowners since 1996. We are recognized nationally as an authority on all types of land, including agriculture, ranch, recreation, residential development, and international properties. Our commercial real estate services include marketing, property management, leasing and tenant representation, valuation, business brokerage, and advisory and counseling services for office, retail, industrial, and multi-family properties. Our firm also features an auction company, forestry division, international partnerships, hunting lease management, and extensive expertise in conservation easements. Located at the center of Florida's I-4 corridor, we provide proven leadership and collaborative expertise backed by the strength of the SVN® global platform. To learn more, visit SVNsaunders.com.

